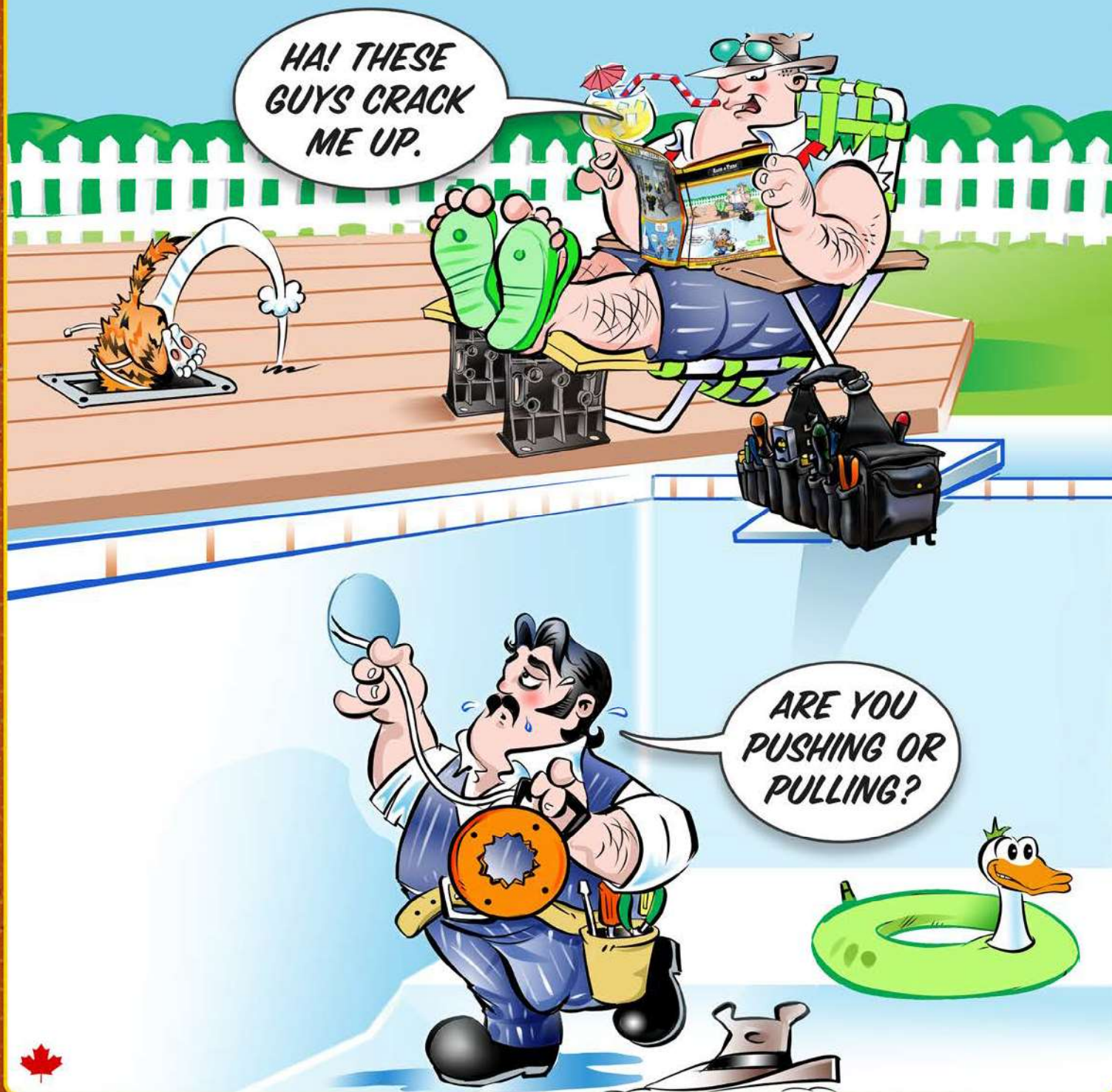


***DISTRACTING ELECTRICIANS WITH CARTOONS SINCE '95***





# TABLE OF CONTENTS

5	4Reel Bracket	16	Flex Flyers	54	ProLock
32	6.5 Blank Plate	14	Flex Puller	17	Puck, The
42	AC Sensor	51-52	Floor Boxes	28	Q-Bit Drywall Hole Cutter
42	AC Splitter	14	Flush Pin Shackle	25	Quattro Flex Auger Bits
43	Aerial Tool Bin	24	Fusion Fish Tape	2	Rack-A-Tiers
50	Aircraft Cable & Wire Crimps	14	GD Center Finder	57-58	Racky Driver Bits
46	Alignment Tool	40	GPS LightLock	49	RAT500 & RAT750
15	All-American Pull Buddies	25	Guide Tool	7	Reel Mac & Spindles
58	Allen Head Driver Bit Kit	27	Guide-O, The	59	Reemer Bit
26	Auger - Standard & Tri-Cut	50	H2 Homer Helper	60	Robertson Screwdrivers
26	Auger Bit File	41	Head Light	60	Rolgear Screwdriver
14	Bag Pipers	12	Heat Tank	17	Ropematic Pro
41	Bat Flashlight	59	Holdsabit	39	Rough-In Stick, The
10	Bend-All	30	Hole-In-One - Hole Cutters	28	Round Multi-Tool Hole Cutter
4	Big E-Z	3	Hooker - Wrench Adaptor	29	Sharp Pog
4	BigGER E-Z Roll	11	Hoppy Bender, The	50	Shim My Box
38	Booty Pack	58	Impact Driver Kit	53	Sidewinders
18	Breaker Lok	25	Javelin	41	Silver Bullet, The
10	Bulldog Benders, The	18	Jet Level	46	Sluggo-Ox
26	Bumper Balls	13	Jimbo, The	8	Smart Load 500
36	Butt Pouches	38	Knee Pads	36	Snap Sack
7	Cable Caddy & Cable Truck	49	KO Killers	16	Snatch Strap
7	Cable Cart & Cable Cart Data	45	Ladder Mate	25	Soffit Bits
54	Cable Clear	62	Ladder Saver	18	Solder M8
48	Cable Mounts	33	Laser Plumb Bob	6	Spool Mac
8	Cable Reel Rollers	34	Laserline	43	Staple Shark
6	Caddy Mac #1 & 2	15	LB Wire Guide	43	StepDek
27	Carbide Tipped Steel Cutters	41	LED Safety Headband Light	20	Steve's Sticky Tags
26	Carbide Tipped Wood Hole Saw Kit	49	Level Jacks	41	Stick Bug
48	Chase Strap	59	LockHard Bits	3	Stick, The
31	Chip Catcher	13	Locknut Wrench, The	15	Sting Ray
35	Combo Tool Belt & Pouches	47	Mag Daddy	11	Stubbee
27	Co-Pilot	34	Magnepull	39	Stud Ball
28	Copper Washer	34	Magnespot	49	Stud Buddies Connectors
9	Copper Wire Strippers	60	Magnetic Bit Holder	35	Support Belt
51-52	Countertop Boxes	60	Magnetizer / Demagnetizer	36	Suspenders
44	Croc's Needle Nose Wire Strippers & Jr.	41	Magpie	25	Switch Bits
50	Crow's Feet	20	Mark My Wire	24	Telescopic Rods
62	Daytona Spoiler	59	Megapro Multi-Bit Screwdriver	54	Temp-It
31	Dirt Bag	27	Multi-Bit Step Drills	53	Temporary Cable Guard
30	Driller's Dust Bowl	45	Nut Blaster XL and XXL	45	Tie Lips
32	Drywall Trapper	13	Nut Snugger	49	Tom Two-Way Connector
42	Dual Check Non Contact Voltage Tester	26	OverDrive Bits	35	Tool Carriers
56	Efergy Products	45	Panel Buddy Knockout Kit	56	Top Hat Cover
53	Elasco Products	14	Penguin Puller Sr & Jr, The	40	Tracer Wizard
29	Electrician's Kit Blades	20	Phase It Right	32	Tree Hugger
56	E-Max Energy Monitor	60	Picquic Screwdrivers	18	Trunktie
38	Exploding Garbage Can	39	Pipe Spinner	5	Tug Wise Standard and Deluxe
60	Extendo Nut Driver	12	Pipe Vipers	42	Ultimate AC Sensor
4	E-Z Roll & E-Z Roll Multi	25	Piranhabits - High Speed Steel	19	U-Phase Wire Marker
61	Fasteners	23	Plastic Coated Fiberfish	47	Van Magnets
21-22	Ferret, The	23	Plastic Coated Glowfish	44	V-Cutter
23	Fibersnakes 3/16", 1/4", 1/2", 5/16"	46	Plate Vise	48	Winnie Magnets
41	Fire Fly	42	Plug Master	5	Wire Spool Hand Cart
16	Fish Heads	33	Poke-E	3	Wire Tub
		24	Polyester Fish Tape & Cases	15	Wire Vortex
		37	ProJob Pants & Shorts	3	X-Dispenser

MADE IN CANADA  MADE IN USA 



FOLLOW US ON



[WWW.RACK-A-TIERS.COM](http://WWW.RACK-A-TIERS.COM)

[SALES@RACK-A-TIERS.COM](mailto:SALES@RACK-A-TIERS.COM)

TOLL FREE: 1 (888) 939-9991



*The Invention That Started It All:*

# RACK-A-TIERS

## ALL-IN-ONE MULTI-USE WIRE DISPENSER

The Rack-A-Tiers Wire Dispenser is the one tool that DOES IT ALL. It's no surprise that we've sold hundreds of thousands of them to electricians everywhere. This genius invention is most commonly used for dispensing wire from spools of various sizes. See for yourself its many other uses!



*See it In Action!*



Part# 11455

## INTERLOCKING PAIRS! VERSATILE! WATERPROOF!



## RUSTPROOF! RELIABLE! RUGGED! EASY TO SET UP!

"We saw another contractor with these and we loved them. You can have multiple spools mounted at a time with various sizes. We have used it for CCTV Siamese cable, speaker cable and alarm cable. They do not take up much room, lightweight and durable."

★★★★★

- Fred

"Simple but effective. It's funny how this simple plastic mold is so useful. It's great. On the package it even mentions other uses I never considered!"

★★★★★

- Lamont

"These were purchased to use for overhead crane service. They have exceeded our expectations"

★★★★★

- Mike

"Where has this been all my life?"

★★★★★

- Noyotas

"Smart design. It's strong, easy to carry, easy to use and very versatile for a reasonable price"

★★★★★

Badbedbug74

"Can fit many application needs like fiber optics cable transfer from one reel to another."

★★★★★

- Frank

"What a great help the cable organizer is. Made my job faster and neater. Thanks again"

★★★★★

- E.D

**ONE SIZE RACK-A-TIERS FITS ALL - UP TO: 34" / 0.9M • 330 LBS / 150 KG WIRE REELS**



# THE X-DISPENSER

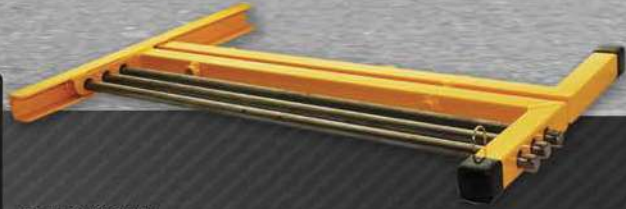
FOLDING WIRE CADDY

## FEATURES:

- Folds to 1" wide to easily fit in your van
- Easy to carry: 1" x 23"
- Holds up to six reels of wire

Maximum spool quantity: 6 reels  
500' of #10 AWG wire  
Maximum spool diameter: 8"  
Max spool width: 9"

Part# 11655



# THE STICK

## STUD MOUNTED WIRE DISPENSER

The Stick installs quickly & easily to any standard stud. Its compact design allows for easy storage once the job is complete.

## FEATURES:

Weight capacity: 200 lbs  
Maximum 15" reel width

Part# 11555



# WIRE TUB

Part# 18455

The Wire Tub allows you to easily dispense and rewind wire. Don't waste a single foot of wire -- rewind it in the Wire Tub and get ready for installation!

## FEATURES:

- 360 degree feed adjusts automatically for easy dispensing
- 3-way adjustable center hub
- Removable top plate has a handle for rewinding wire!
- Large 24" diameter capacity
- Inner tray spins



# Hooker

## PIPE WRENCH ADAPTER

Part# 10455

The Hooker Pipe Wrench Adaptor lets you turn your Rack-A-Tiers Wire Dispensers into a pipe vise.

## FEATURES:

- Light weight
- Easy to use
- Fast implementation
- Inexpensive
- To be used with an 18" rigid pipe wrench





# EZ ROLL

## FEATURES:

- 150 lbs load tested
- Rigid steel construction
- Light-weight design
- Compact (fits in any job box)
- Holds reels up to 24"
- Replacement wheels available

Part# 55455



\*PIPE NOT INCLUDED

## EZ Roll MULTI

GET THE MOST OUT OF YOUR EZ-ROLL WIRE RACK WITH THE NEW EZ-ROLL MULTI. THIS HANDY ADD-ON EXTENDS THE EZ-ROLL'S USE BY ALLOWING MORE WIRE SPOOLS TO BE ADDED, GIVING IT EVEN MORE FUNCTIONALITY & CAPACITY.



PART# 55456

# BIG EZ

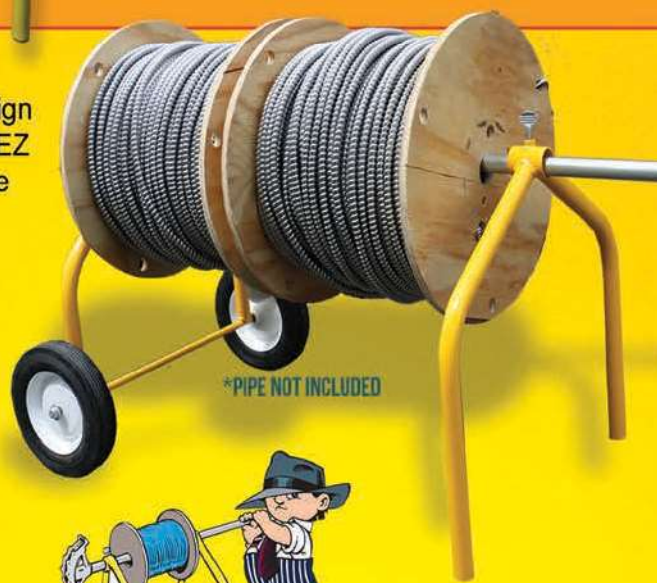
## FEATURES:

- 300 lbs load tested
- Rigid steel construction
- Light-weight design
- Compact (fits in any job box)
- Holds up to 32"

The Big E-Z utilizes the same design and great features as the original EZ Roll while allowing you to dispense larger wire spools.



\*PIPE NOT INCLUDED



Part# 55632

# BiggER EZ Roll

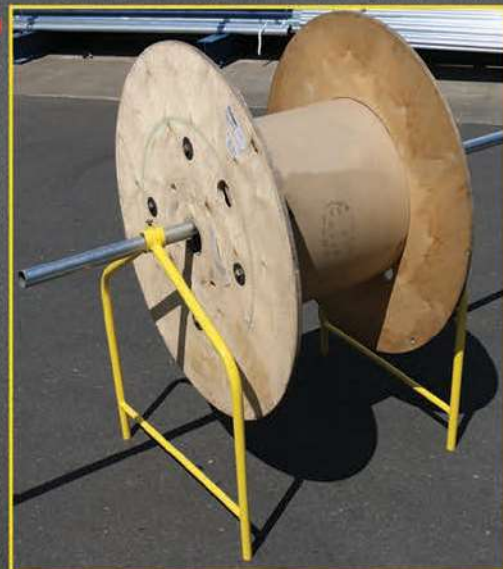
You asked for it, we built it. The BiggER E-Z Roll is a great addition to our line-up of wire dispensing products.

Max weight: 500lbs.

Max reel diameter: 52"

\*Does not come on wheels like the other E-Z Rolls.

Part# 55652





**THREE EASY STEPS! 1. SCREW TO BASE OF REEL 2. FLIP OVER REEL 3. PULL WIRE!**

# TUG WISE

## STANDARD MODEL (15" x 15")

- 4 screw holes for easy attachment
  - Works with wooden and plastic reels
  - Standard model can handle up to 1000 lbs
- Part# 11931



# TUG WISE <sup>USA</sup> Deluxe

## DELUXE MODEL (21.5" x 21.5")

- 4 screw holes for easy attachment
- Works with wooden and plastic reels
- Can handle up to 2000 lbs
- Made of 3/8" thick aluminum alloy and built to handle anything



Part# 11932

# 4 REEL BRACKETS



The 4Reel Brackets clamp on to a standard 2x4 wood stud and are capable of holding multiple 1,000' reels of wire.



- Made for a maximum of 4 – 1000' NMD reels or weight equivalent.
- Clip together for compact, easy storage.
- Made from galvanized steel.
- To be used on 2x4 wood studs only. Not meant for steel studs.
- Do not install higher than 20".
- 1" IMC or Rigid is recommended with heavier loads.
- Mounting pins provided.
- 700 lbs. Load Tested



Part# 11560



# WIRE SPOOL HAND CART

- Finish: Yellow powder coated
- Dispenses (8) 5" Wide Reels or (4) 6 to 10" Wide Reels, up to 7" Dia.
- 80 LB capacity

- Height 20"
- Width 15"
- Length 26"
- Number of Spindles 4
- Material: Steel

Part# 11700





# CADDY MAC 2

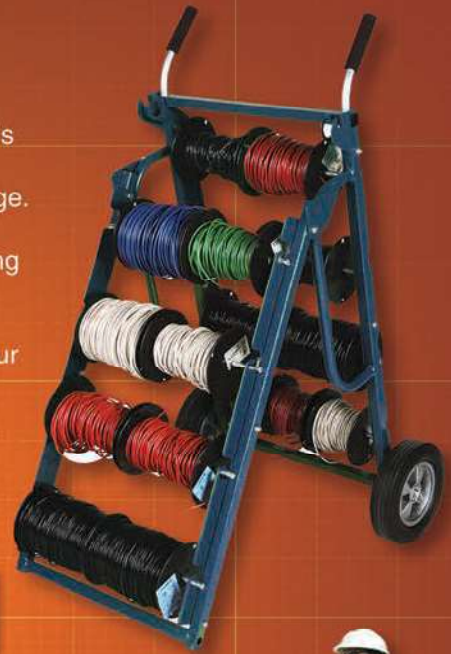
Part# 11902



Caddy Mac #2 holds 16 spools of #10 awg or 24 spools of #12 awg. Hinge design allows easy access to all spools for wire dispensing and folds for compact storage.

Spindles swing out to set position for convenient loading of wire spools.

Inner spindles store in special loops which can hold four pieces and will not fall out during transportation.



Number of Spools	Max Spool Dia	Load Capacity	Weight	Width	Additional Features
16-#10 awg. or 24-#12 awg.	7.5 in 19 cm	400 lbs 180 Kg.	72 lb. 33 kg.	26 in 66 cm	Folds up for compact storage.

# SPOOL MAC

Part# 11900

\*Ships via freight

## FEATURES:

- All steel frame construction
- 10" wheels
- Easy set-up for cable dispensing
- No loose pieces
- Compact storage
- Fits through 32" (81 cm) doorways
- 350 lb (160 kg) load capacity
- Priced right – built to last



Max Reel Width	Max Spool Dia	Reel Capacity	Weight	Width	Additional Features
25 in 63.5 cm	40 in 101 cm	350 lbs 160 kg	76 lb. 35 kg.	31.5 in 80 cm	All steel frame, easy set-up for cable dispensing. Compact storage. Ship weight: 150 lbs



# CADDY MAC 1

Part#11901

- Caddy Mac #1 transports spools on spindles and works as a dolly! Wire is dispensed while laying flat.
- 1/2" solid spindles are attached to cart, no loose pieces. Spindles lock in place, even during transportation.
- Spindles swing out to set position for convenient loading of wire spools.

Number of Spools	Max Spool Dia	Load Capacity	Weight	Width	Additional Features
8-#10 awg. or 12-#12 awg.	7.5 in 19 cm	200 lbs 90 kg	72 lb. 33 kg.	26 in 66 cm	Transports spools on spindles and works as a dolly. Wire is dispensed while laying flat.



# REEL MAC THE REAL JACK



## REEL MAC 60

Screw type telescoping reel jack for 26 to 56" diameter reels.

## REEL MAC 70

Screw type telescoping reel jack for 46 to 96" diameter reels.

## REEL MAC 80

Heavy duty ratchet drive reel jack for reels up to 90" in diameter. Convenient, detachable ratchet handle stores in base when not in use.

**Mfg. Note:** Reel Macs sold as singles, buy 2 for a set.



Reel Mac 60  
Part# 11860



Reel Mac 70  
Part# 11870



Reel Mac 80  
Part# 11880

## REEL MAC SPINDLES

Used with Reel Mac reel jacks. (Sold separately)



REEL MAC & JACK-A-TIER				
Description	Part #	Reel Diameter	Capacity	Weight
Reel Mac #60	11860	26-56"	2500lb	27lbs
Reel Mac #70	11870	46-96"	2500lb	46lbs
Reel Mac #80	11880	up to 90"	3750lb	99lbs

Corresponding SPINDLES				
Description	Part #	Dimensions	Capacity	Weight
#61	11861	2 3/8" x 62"	5000lb	39lbs
#71	11871	2 3/8" x 76"	5000lb	47lbs
#81	11881	3 1/2" x 100"	7500lb	119lbs



Part# CC1200 - Cable Caddy

## CABLE TRUCK & CABLE CADDY

- Constructed of rugged 1" steel tubing.
- Both are 43" tall with 7" rubber wheels.
- Both can accommodate spools up to 16" wide on solid steel 1/2" axles.
- Cable Caddy features 6 axle positions for unlimited versatility.
- Cable Truck has 4 axle positions and a solid steel plate for transporting material.



Part# CT1100 - Cable Truck

## CABLE CARTS

Part# CC2000 - Cable Cart

- Comes with interchangeable 1" and 3/4" axles.
- Holds up to 30 spools of THHN.

- Vertical racks swing forward for easy loading
- Space for plywood work table on top

Dimensions: 40W x 48L x 48H / Shipping weight: 185 lbs



FOLLOW US ON



WWW.RACK-A-TIERS.COM

SALES@RACK-A-TIERS.COM

TOLL FREE: 1 (888) 939-9991



# CABLE REEL ROLLERS

CABLE REEL ROLLERS ARE USED FOR ROLLING LARGE CABLE SPOOLS, FOR PAYOUT, UNWINDING AND TAKE-UP OF HEAVY CABLE. FOR PURCHASING OR RENTING THESE CABLE ROLLERS OR BUILT TO YOUR SPECIFICATIONS CALL [RACK-A-TIERS.COM](http://RACK-A-TIERS.COM)



## FEATURES & BENEFITS

Variable speed drive for rotational speed adjustability; input power supply to custom needs

Anti-tipping safety catch (Optional)

Adjustable reel alignment guides

Slip clutch for gearbox and over-torque protection

Quick adjust carriage for diameter settings

Leveling Feet (Optional)

Top quality motor/gear train, heavy duty frame



Part# 2010T



Part# 2015T



Part# 2040T

### SPECIFICATIONS

	2010T 10 Ton Cable Reel Roller	2015T 15 Ton Cable Reel Roller	2040T 40 Ton Cable Reel Roller
Load Capacity:	20,000 lbs	30,000 lbs	80,000 lbs
Spool Size Range:	2-8 ft diameter 5 ft-3 in max width	2-12 ft diameter 8 ft max width	5-16 ft diameter 10 ft max width
Tractive Effort/Torque:	2,150 lbs	3,000 lbs	8,500 lbs
Rotation Speed:	30-780 in/min	48-480 in/min	48-480 in/min
Height Range:	Low Profile, fine adjust leveling feet optional	Low Profile, fine adjust leveling feet optional	Low Profile, fine adjust leveling feet optional
Power Requirements:	240V, 1-ph*	240V, 1-ph*	480V, 3-ph*
Equipment Mass:	2,200 lbs	3,015 lbs	6,700 lbs
Footprint:	79"x 95" x 29"	99"x 134" x 22"	102" x 156" x 43"

\* 208 - 600V, 50 or 60 Hz input power options available. Specifications subject to change; consult factory for all specifications.



## SMART LOAD 500

The Smart Load 500 is an easy to use, portable wire dispensing cart. This versatile cart offers dispensing options for a variety of spool sizes. The dispensing bars even fold up for easy storage. This patented design will surely save you time and effort on the job site, in the warehouse or wherever you need it!

- Spool Capacity: 24 - #12 or 14 500' THHN
- 15 - #10 500' THHN
- Max Weight Capacity: 350 lbs.

Part# 11905  
Patent # US10676310B2





# COPPER WIRE STRIPPERS

RECOVER COPPER & ALUMINUM WIRE QUICKLY AND EASILY WITH THESE MONEY MAKING MACHINES!

## COPPER WIRE STRIPPER 2

The top selling CWS-2 model weighs in at only 45lbs. This wire stripper is compact enough to easily move around, but still has the ability to strip a wide range of wire.



### FEATURES:

- Strips from 14 AWG to 750 MCM (1.45" diameter)
- Strips NMSC cable 10-14 AWG
- 1/2 HP Motor
- All aluminum frame
- Hardened one piece blade
- Strips solid core or braided wire
- Blade made from tool steel
- Blade easily re-sharpened
- Fully adjustable wire guide

Part# 47200

## COPPER WIRE STRIPPER 1

The CWS-1 is the largest wire stripper available from Rack-A-Tiers. Powered by a 1 HP motor and with the ability to strip up to 3" in diameter, there isn't much this wire stripper can't handle.



### FEATURES:

- Strips 14 AWG to up to 3" in diameter
- Strips NMSC cable 10-14 AWG
- 1 HP motor
- All aluminum frame
- Hardened one piece blade
- Strips solid core or braided wire
- Blade made from tool steel
- Blade easily re-sharpened
- Fully adjustable wire guide
- Bench model - anti-slip base
- Made in Canada

Part# 47100

## COPPER WIRE STRIPPER JR.

A low cost alternative to the CWS-2, the Copper Wire Stripper Jr. is the money making tool that you need in your warehouse. Driven by a standard power drill, you'll get more than double the money from your scrap wire. It's that simple!

### FEATURES:

- Wire Range: 14 AWG - 4/0
- Strips NMSC cable 10-14 AWG
- All aluminum frame
- Single pass cuts outer jacket & one inner wire
- Hardened one piece blade
- Strips solid core or braided wire
- Blade made from tool steel
- Blade easily re-sharpened
- Fully adjustable wire guide

Part# 47030



**CWS JR.**  
SINGLE PASS CUTS  
OUTER JACKET AND  
1 INNER WIRE



## EASY STRIPPER

Strip the cover off your scrap wire in minutes with the Easy Stripper! Increase your earnings on every single job you complete.

### FEATURES:

- Less than 10% the price of a standard motorized wire stripper
- Strips 12 to 4/0 wire
- Powered by any normal power drill
- Way easier and faster than using your knife!
- Environmentally friendly - no burning required
- For Light Use Only

Part# 47020



## REPLACEMENT PARTS

### CWS-1

Replacement Blade - Part# 47100B  
Red Feed Guide - Part# 47100G  
Replacement Pulling Wheels - Part# 47100W

### CWS-2

Replacement Blade - Part# 47200B  
Red Feed Guide - Part# 47200G  
Replacement Pulling Wheels - Part# 47200W

### EASY STRIPPER

Replacement Blade 2nd Edition - Part# 47020B2

### CWS JR.

Replacement Blade - Part# 47030B  
Red Feed Guide - Part# 47030G  
Replacement Pulling Wheels - Part# 47030W  
Replacement Shaft - Part# 47030S



**WIRE BENDING MADE EASY**



The Bulldog Bender is designed and manufactured by an electrician for electricians. Used for bending wire in panels, disconnects, LBs & wireways. The Bulldog Bender will prove to be a valuable tool to add to your arsenal. As with any specialty tool, with practice you will learn how to use the Bender to its full bending potential.

Part# 78600

Part# 78501

Part# 78502

Part# 78500

Part# 78400

Hourglass Dowels (smooth)  
Part# 78050 – Up to 500MCM  
Part# 78060 – Up to 750MCM

PART #	DESCRIPTION	SIZE
78500	BULLDOG ORIGINAL	UP TO 500 MCM
78501	BULLDOG PRO WITH ADAPTOR	UP TO 500 MCM
78502	BULLDOG 3-PIECE SET (ORIGINAL + PRO)	UP TO 500 MCM
78600	BULLDOG BIG DADDY 3-PIECE SET	UP TO 750 MCM
78400	BULLDOG PUP	UP TO 4/0
78402	BULLDOG "PUP PRO" 2 PCS SET	UP TO 4/0
78403	BULLDOG "PUP" 3 PIECE SET	UP TO 4/0

ALL BULLDOGS SHIPPED WITH KNURLED DOWELS EXCEPT THE "PUP" SERIES. SMOOTH DOWELS AVAILABLE.

# Bend-All

SAVE YOUR KNUCKLES BY USING OUR BEND-ALL CABLE BENDER! MADE WITH MACHINED AIRCRAFT ALUMINUM, THIS CABLE BENDER IS EXTREMELY STRONG AND DURABLE. IT CONNECTS TO YOUR STANDARD 1/2" RATCHET, MAKING CABLE BENDING A BREEZE FOR YOU.



**BENDS UP TO 500 MCM**



Part# 77455







# HOPPY BENDER

## EASY AS 1,2,3!

THE HOPPY BENDER IS HANDS DOWN THE SMARTEST & MOST INNOVATIVE BENDER ON THE MARKET. WE HAVE REVOLUTIONIZED THE WAY ELECTRICIANS BEND PIPE - IT HAS NEVER BEEN EASIER OR FASTER THAN IT IS NOW WITH THE HOPPY BENDER.



### STEP ONE

READ TABLE AND MARK PIPE



### STEP TWO

SET STOP



### STEP THREE

Get Bent



### FEATURES:

- A "Stop" attached to the Bender head used to create exact & repeatable bends every time.
- Simplified "Multipliers" engraved into the bender for placing the "Stop" prior to making off sets & four-point saddles.
- Special 22.5 and 45 degree marks engraved into the bender for placement of conduit bend marks as well as standard degree marks for stop placement.
- Used together for bending three-point saddles without reversing the conduit in the shoe.
- Handy reference charts attached to the handle for locating bend marks.

#### Part#

57050 - 1/2" Hoppy Bender

57075 - 3/4" Hoppy Bender

57002 - Replacement Handle

57005 - Replacement Thumb Screw

57050LAB - 1/2" Replacement Label

57057 - 1/2" Replacement Swing-Stop

57075LAB - 3/4" Replacement Label

57077 - 3/4" Replacement Swing-Stop

# Stubbees



MAKE THIS

CREATE SHORT, RIGID BENDS  
EASILY IN MECHANICAL BENDERS  
WITH OUR STUBBIES!



NEED A BIGGER STUBBEE? CONTACT OUR SALES TEAM!

1/2" Stubbee - Part# 59250

3/4" Stubbee - Part# 59275



# PIPE VIPER

COLD BEND RIGID PVC  
PIPE WITHOUT PIPE  
COLLAPSE OR FRACTURE! 



## HOW?

Simply insert the spring into the pipe & bend across your knee!

- **No Heat Guns**
- **No Heat Blankets**
- **Fewer PVC Fittings**

MFG Note:

Needs to be at least 50 degrees Fahrenheit to work effectively

## PART#

58050 - 1/2" PVC Spring Bender  
58075 - 3/4" PVC Spring Bender  
58100 - 1" PVC Spring Bender  
58125 - 1 1/4" PVC Spring Bender  
58150 - 1 1/2" PVC Spring Bender  
58200 - 2" PVC Spring Bender  
58250 - 2 1/2" PVC Spring Bender  
58300 - 3" PVC Spring Bender  
58350 - 3 1/2" PVC Spring Bender  
58400 - 4" PVC Spring Bender



# The HEAT TANK

The Heat Tank is a simple and effective way to bend your PVC pipe. Using a standard forced air heat gun, means no expensive blanket or heat boxes are required. Simply connect your heat gun to the designated slot, insert the portion of the pipe you wish to bend and you're set!



*\*Heat Gun Not Included*

**WILL HOLD UP TO  
1 1/2" PVC CONDUIT.**

## FEATURES:

- Prevent overheating and burning with the temperature gauge
- Saves time with hands free heating
- Eliminates the need to buy prefab 90's and couplings

Part# 59500





# THE JIMBO

## WIRE PULL BRACKET

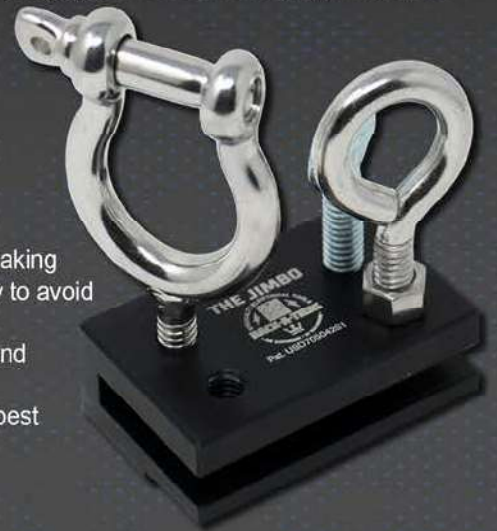
**A LITTLE BRACKET THAT MAKES A BIG DIFFERENCE!**



### FEATURES:

- Set up multiple brackets making a temporary cable raceway to avoid snags or catching
- Pull hard around corners and through structural steel
- Consolidate cables to the best angle for ease of pulling

Part# 40200



# NUT SNUGGER

Utilizing magnets, The Nut Snugger allows you to install a connector without assistance of another worker when the location of the connector is out of reach.

### FEATURES:

- Patent Pending
- Made in USA
- Can be used with adjustable wrench, tongue and groove pliers, 3/4" box wrench, and 3/8" drive ratchet.

Part#s 80075 - 3/4"  
80050 - 1/2" 80090 - Kit 1/2" and 3/4"



# THE LOCKNUT WRENCH

### Available Sizes:

Part# 79050 - 1/2"  
Part# 79075 - 3/4"  
Part# 79100 - 1"  
Part# 79150 - 2 Piece Locknut Wrench Kit  
(Includes 1/2" & 3/4")  
Part# 79200 - 3 Piece Locknut Wrench Kit



How many locknuts have you bashed with your flat blade screw driver? The Locknut Wrench allows you to tighten locknuts quickly and works great in tight spaces. The patent pending design is available in 3 sizes.

- Offset ends allow access in tight locations. Handle cut away sections are engineered to exact lock nut engagement and rotation
- Singular handle prevents wrist tension
- Clear permanent laser etched markings to ease use
- Comprised of durable steel and strong enough for any job





IT'S SIMPLE... FOAM LINE CARRIERS ARE EXPENSIVE

# BAG PIPERS

ARE CHEAPER AND WORK MUCH BETTER

3 sizes available to fit conduit 1/2" up to 6"

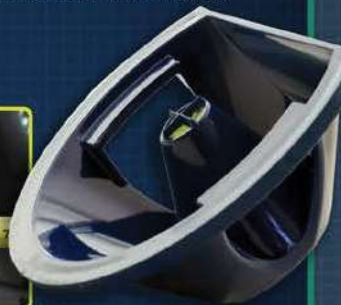


Part#  
BP05.125 (sm) 1/2" x 1 1/4" - 10 pack  
BP150.40 (med) 1 1/2" x 4" - 5 pack  
BP20.60 (lg) 2" x 6" - 3 pack  
BP05.600 (multi-pack) 1/2" x 6" - 6 pack

# GD CENTER FINDER



The GD Center Finder is a new product that revolutionizes the installation of electrical panels and junction boxes. No need to learn a new installation process. Pull your layout just as you always have, but this time aided with the GD Center Finder. Your center point will always be level and clearly identified. The days of "close enough" are over. Finally a center tool that works!



Part# 67500

# THE PENGUIN PULLER



The Penguin Puller Sr. and Penguin Puller Jr. are revolutionary new tools designed to aid in easily pulling large cables. The sleek, bullet shape allows for seamless pulling, no tape or crimps required. Utilizing four slots and allen-key set screws, the Penguin Puller Sr. and Penguin Puller Jr. are rated for 4000 lbs. of pull strength. These tools are the cool new kids on the block and here to stay when it comes to pulling wire!

## Features:

- 4000 LBS. MAX PULL STRENGTH
- Penguin Puller Sr. - 3/0 to 350 MCM Copper or Aluminum
- Penguin Puller Jr. - 2/0 to 4/0 Copper or Aluminum
- No tape, no crimps, no mess
- Reusable

## FLUSH PIN SHACKLE

- Stainless Steel
- Four Ton Break Load
- .5" Pin Size



Part# 69710

Part#

69700 - Penguin Puller Sr. For Pipe 2 1/2" and Larger  
69705 - Penguin Puller Jr. For Pipe 2" and Larger

# FLEX PULLER



2 Pack  
Part# 42620

- Flexible metal conduit pulling tool easily screws onto exterior of MC cable & provides a hook to pull cable.
- No more getting caught up in insulation or other obstacles!
- Can be used on #14, #12, & #10 MC Cable!
- Provides a hook to pull cable through hollow & insulated walls and ceilings.





# THE ALL AMERICAN PULL BUDDY

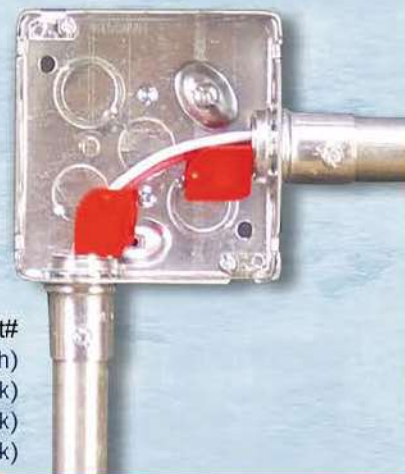
## SHOEHORNS FOR YOUR WIRE



### FEATURES:

- Reduces Time and Labor
- Reduces the chance of damaging wires
- Turns wire pulling into a one person job

Part#  
42000 - Multi-Pack (6 pack / 2 of each)  
42050 - 1/2" Blue (10 Pack)  
42075 - 3/4" Red (10 Pack)  
42100 - 1" White (10 Pack)



# LB Wire Guide

## THE LB WIRE GUIDE IS A "SHOE HORN" FOR 2" LB'S.

Part# 42200



### FEATURES:

- Assists while working on your own
- For PVC LB fittings and is adaptable to most metal LB's
- Fast for one person conductor installations
- Installs in two positions to fit both "Ends" of the LB

### MFG NOTE

Two hundred amp services (3/0 wire) can be hard on your knuckles. The LB Wire Guide puts the wire in the pipe and leaves the skin on your fingers.



# StingRay

SNAP IN PLACE &  
PULL YOUR WIRE



- PROTECTS EXPENSIVE AND FRAGILE CABLES
- PROTECTS CEILING FROM TWISTING AND MARRING
- PREVENTS CABLES FROM TANGLING WITH THE CEILING, SAVING TIME AND LABOR
- SMOOTH INTERIOR CREATES AN ALMOST FRICTIONLESS CHASE
- SIDE SLIT ALLOWS FOR EASY CABLE REMOVAL AT ANY TIME
- EASY TO INSTALL AND REMOVE



Part# 40400



# WIRE VORTEX

If you need an extra pair of hands on the job, try the Wire Vortex. This wire pulling guide fits on 4" square boxes and saves you tons of time when pulling wire.

### FEATURES:

- Protects wire from damage when pulling
- Can pull wire in all 4 directions
- Use for standard (shallow) or deep boxes
- Built with durable, impact-resistant plastic
- Easy to slip on and off



Part# 40001



# FLEX FLYER

## FEATURING "QUICK CHANGE SWIVEL HEAD"

- Installs in under 20 seconds using two pairs of pliers, no torch needed
- Flies through those tough conduit runs
- Loop technology allows leader to glide through flex as well as all other types of conduit
- Loops allow leader to be snagged from other end of conduit run when necessary
- Standard 1/4"-28 threads allow for the use of other types of leaders on quick change base



The Flex Flyer features a quick change swivel head that installs on the end of a fish tape in 20 seconds by twisting the fish tape with 2 pairs of pliers. The loop technology allows the leader to move smoothly through all types of conduit including flex. The standard 1/4" - 28 threads allow for other types of leaders to be attached to the quick change base.



Part#  
69050 - Flex Flyer 1/2"  
69075 - Flex Flyer 3/4"

# FISH-HEADS

Part# 69010

Tired of fish tapes getting snagged or breaking? Try Fish Heads to fix and improve your broken fish tape end.

### FEATURES:

- Complete spherical head reduces the chance of getting stuck
- Tapered back end
- Tested 500+ pounds
- Reusable



# SNATCH STRAPS

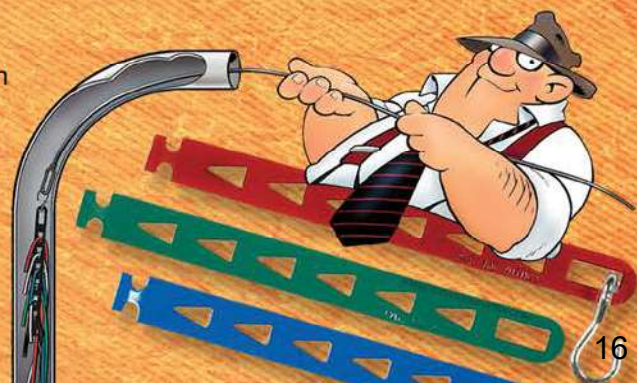
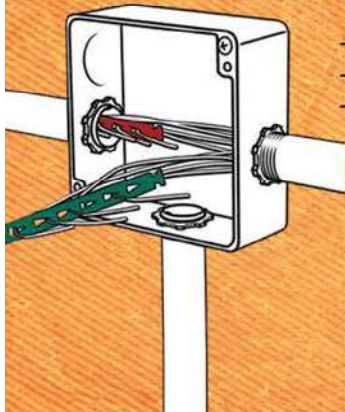
Use the Snatch Strap for fast attachment on conduit pulls. No stripping or taping required!

- Pull more conductors with less effort
- Can be chained together
- Color coded for easy circuit and phase identification

### MFG Note:

Snatch Strap handles #22 - #12 AWG. If additional wires are required simply add additional straps.

Part# 69455







# ROPEMATIC PRO

## THE SMART WAY TO PULL

**STOP HURTING YOUR HANDS AND WRISTS.  
STOP BREAKING EXPENSIVE FISH TAPE.**

**PULL ROPE AND FISH TAPE THE SMART WAY WITH THE ROPEMATIC.**

The Ropematic has a durable latch that grabs rope or fish tape when you are pulling down. As you pull back up, the latch loosens and easily slides up the rope or fish tape. You can then pull down again and the Ropematic will grab the rope or fish tape, pulling it down.



# The PUCK

## Ground Clamp Socket



### Features:

- Compact
- Made from aircraft aluminum
- Indicating line
- Multi-purpose
- Industry-standard ground clamps
- Fits common 1/2 inch drive socket wrenches

## A NEW SOLUTION FOR INSTALLING GROUND CLAMPS

Grounding clamps are used to ensure complete discharge of electricity while servicing or maintenance of electrical power systems in substations. There are many varieties of clamps manufactured by different companies, each with different fastening configurations such as an eye-bolt or a T-handle. Technicians use screwdrivers or channel lock pliers to tighten the grounding clamps. This sometimes produces a poor contact on the bus because of lack of accessibility. The Puck, when used with a standard 1/2 inch drive socket, provides the proper leverage in limited visibility or access areas, ensuring a proper contact on the bus.



An "indicating line" for use when working blind.



The Puck fits most brands' T-handles.



The Puck also fits most brands' eye-bolts.

### Benefits:

- Allows ground clamps to be quickly, easily, and more securely installed in hard-to-get-to places versus the screwdrivers or channel-lock pliers that are currently used
- Lightweight and durable
- Allows the user to see where they need to line up
- One tool can be used with multiple manufacturers' equipment, multiple types (eyes and Ts) and multiple sizes
- Works with existing industry-standard equipment that will be in use for generations to come
- Provides proper leverage on short T-handles

Eye-bolts obstructed by cable further complicate turning the bolts with a screwdriver or channel lock pliers

**Designed For:**  
Electricians  
Electrical Workers  
Linemen  
Utility Industry

Part# 40950



# SolderM8



## SolderM8 is an Electricians best Mate

An amazing little gadget created by an Electrician for Electricians. It makes soldering LED strip lights so easy even your most inexperienced apprentice will conquer the skill in no time. You can now provide a high quality, durable finish on full lengths of LED strips in a fraction of the time – it will cut your costs and up your profits. For these reasons SolderM8 is now fast becoming an essential in every professional Electrician's toolbox.

### What it Does

The magical underside sticks to flat or textured surfaces at every angle, even upside down. Insert the wires and it holds them in place firmly while you dab on solder and hey-presto the job is done and you move on to the next joint quickly, cleanly and easily.

Part# SM802



## JET LEVEL

This convenient and strong pocket level comes with 4 precision vials of 0, 30, 45, and 90 degrees.

### FEATURES:

- CNC milled from 6061 aluminum extra large "VD" groove, straddles up to 10" diameter
- Rare Earth magnets for extra holding
- Water and shock resistant

Part# 45404



## BREAKER LOK

**SECURE ANY CIRCUIT BREAKER IN THE ON POSITION WITH EASE!**

- Universal lock fits most breakers & standard toggle switches.
- Set screw and rigid leg prevents lock from slipping off breaker.
- Reusable & corrosion resistant.



Part# 75000 - 5 Pack

## TrunkTie



### What is Trunktie?

Trunkties are a simple solution designed to hold, hang, or tag things in position relative to an unpopulated port. Their most common use is to hold tags for identifying network ports, but our customers have found countless creative applications for their use.

### How it works

Trunkties plug into an unused port, providing a flexible cable that secures into a multipurpose loop. That's all, it's that simple.

Part # 75065 (Pack of 25)



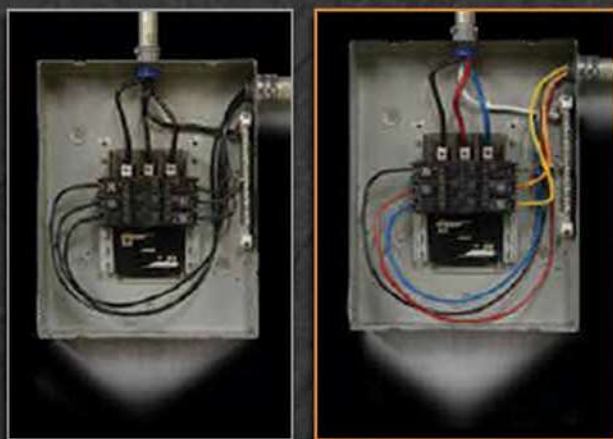




# UPHASE

## WIRE MARKERS

QUICKLY AND CONVENIENTLY USE THE UPHASE WIRE MARKER TO  
COLOR CORDS AND WIRES FOR FAST AND EASY ORGANIZATION



BEFORE AFTER

### Part#

52490BK - Black - 4 pack  
52490BL - Blue - 4 pack  
52490RD - Red - 4 pack  
52490WT - White - 4 pack  
52490BR - Brown - 4 pack  
52490GR - Green - 4 pack  
52490GY - Gray - 4 pack  
52490OR - Orange - 4 pack  
52490VT - Violet - 4 pack  
52490YW - Yellow - 4 pack  
52491 - 4 pack Kit (blue, red, white, green)  
52493 - 4 pack Kit (gray, orange, yellow, brown)  
52492 - Replacement tip



*See it In Action!*

- Electrical Panels
- Colour Coding Wire
- Identifying Wiring Circuits
- CAT-5 Ethernet Cable
- Audio/Video Cable
- HDMI Cable
- Automotive wire



# UPHASE

## LARGE WIRE MARKERS

### FEATURES

- Patented tip design marks MCM wire up to 3/4 in. quickly, effectively, as well as smaller AWG wire (U.S. Patent No. 7,320,553)
- New, resilient polyester tip lasts longer
- Marks adhere to clean sheath permanently and resist handling, abrasion, and heat
- 10 times more mileage, 20 percent lower cost than vinyl tape
- Green label paint has lower environmental impact than vinyl tape
- Drying Time Approx. 90 sec.
- Marking Temp Range 0 degrees to 110 degrees Fahrenheit (-18 degrees to 44 degrees C)

### Part#

52496BK - Black  
52496BL - Blue  
52496GR - Green  
52496RD - Red  
52496WT - White

Patent# 7,320,553





# MARK MY WIRE

## WIRE MARKING SYSTEM



USE HIGH DENSITY, QUICK DRYING MARKERS THE OLD FASHIONED WAY OR THREAD THE WIRE DIRECTLY THROUGH THE HOLE IN THE MARKER'S TIP!  
PAINTS ON 14, 12 & 10 WIRE!

AVAILABLE IN:

*Blue*

Part# 52480BL

*Red*

Part# 52480RD

*Black*

Part# 52480BK

## PHASE IT RIGHT

### PRE-PRINTED COLOR WIRE MARKERS



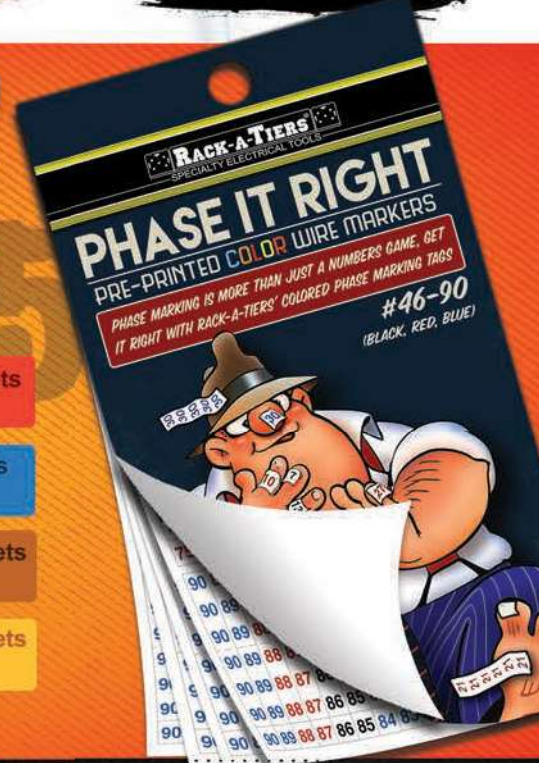
Phase marking is more than just a numbers game. Get it right with Rack-A-Tiers' colored phase marking tags

#52600 - Low Voltage Sticker Booklets  
#1-45 (BK, RD, BL)

52615 - Low Voltage Sticker Booklets  
#46-90 (BK, RD, BL)

#52630 - High Voltage Sticker Booklets  
#1-45 (BR, OR, YW)

#52645 - High Voltage Sticker Booklets  
#46-90 (BR, OR, YW)



Part# 52500

## DURABLE WATERPROOF ULTRA-FLEXIBLE

Steve's Sticky Tags all-purpose self-laminating armored cable markers.

- Durable
- Waterproof
- Designed specifically for B/X and MC armored cable
- Includes permanent marker
- 100 Tags per book
- Ultra-Flexible







# WiFi INSPECTION CAMERA AND CABLE PULLING TOOL

**Built-in WiFi hotspot. Wireless and rechargeable**

**Wireless range of up to 50' (15m) using a glow rod/fish stick  
(It's not tethered like a traditional borescope)**

**Record photos & videos to your smart device with the  
free and easy to use App (Android V6/iOS V8 or later)**

**High resolution 720p HD real time streaming**

**Bright white LEDs for visibility in complete darkness**

**Always up viewing mode for intuitive inspections**

**Digital zoom allows for close up viewing**

**Includes short rod, gooseneck, hook, magnet and thread adaptors**

**Visual inspections, cable installations, maintenance and  
repair work made easy with the Ferret**



## **FIND IT**

Locate cables with ease



## **HOOK IT**

Visibility in complete darkness

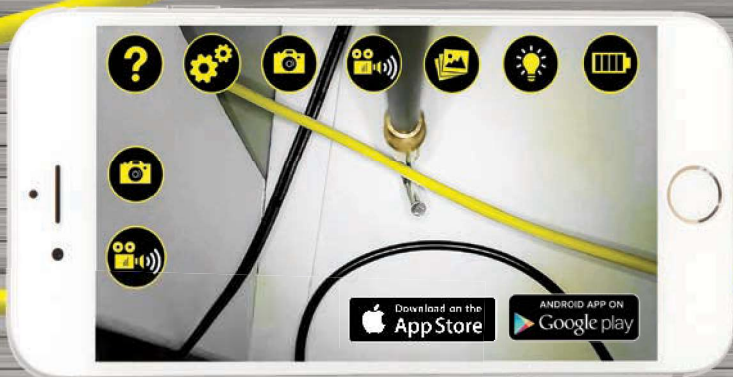


## **PULL IT**

Pull cabling in half the time

**FOR EASIER, FASTER & CLOSE UP VISUAL INSPECTIONS.**





## NEW FERRET RANGE



## THERE'S A FERRET FOR EVERYONE

NEW FERRET RANGE	NEW PRODUCT		
	FERRET LITE <sup>®</sup> Part #99317	FERRET PRO <sup>®</sup> Part #99320	FERRET PLUS <sup>®</sup> Part #99330
Save photos & video to smart device	✓	✓	✓
Always up function	✓	✓	✓
Battery charge time to 95% charged	1.5hrs	1hr	1hr
Suitable for cable pulling	✓	✓	✓
Able to change resolution & WiFi channel	✗	✓	✓
Lens (720p)	Fixed focus	Variable focus	Variable focus
Onboard Memory	✗	✗	✓
Built in non-contact voltage detector	✗	✗	✓



### ACCESSORIES

Part #99306



## FERRET WRISTBAND

The Ferret Wristband is a universal phone holder that will securely attach any smart phone from 3.5" up to 6" to your wrist. With a 360° rotatable front section the phone can easily be turned to the perfect angle needed for any situation.



Part #99305



## FERRET STICK

The Ferret Stick is an extendable rod made of lightweight 201 grade stainless steel with a non-slip rubber handle & secure wrist strap. It expands from 12" out to 55" and has a 1/4"-20UNC thread making it fully compatible with all Ferret products.



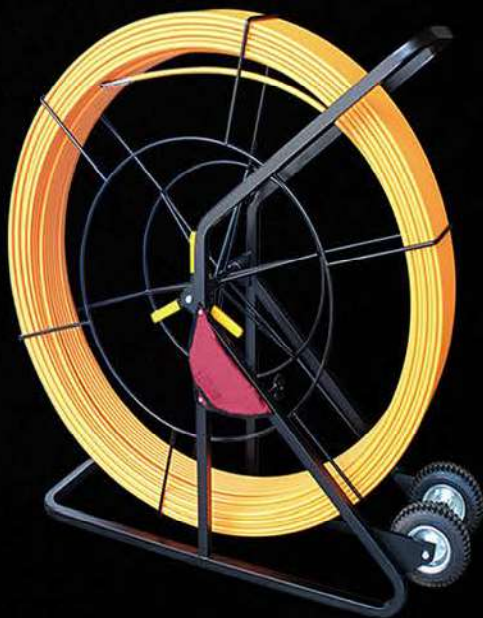
**INSPECT WITH THE FERRET - SMART TOOL. SMART CHOICE.**



# FIBER RODDERS

**1/2"** Part# FS12657 - 1/2" x 657'  
Part# FS12985 - 1/2" x 985'

- Fiberglass reinforced plastic with durable plastic surface coating
- Up to 985 ft in length, the 1/2" fish tape is excellent for the big fishing jobs
- Threaded stainless steel ends can be coupled with 4 different end types, including flexible guide, roller guide, pulling eye and clevis.
- High quality, cantilevered frame design provides good leverage and better balance when hoisting onto wheels
- Rubber wheels provide good traction and a smooth ride when transporting from truck to work location



**3/16"** Part# FS316200 - 3/16" x 200'  
Part# FS316300 - 3/16" x 300'

- Fiberglass reinforced plastic fish tape with durable low-friction polyamide coating
- Light and durable steel frame with anti-corrosion surface treatment
- Adjustable knob allows for easy control of wheel rotation speed
- Threaded brass ends can be coupled with ridged pulling eye or flexible guide type leads.
- Brass ends affixed with embedded pins for extra strength, holding up to 300 lbs of force.



**1/4"**

- Fiberglass reinforced plastic with low-friction plastic coating for smooth pulling.
- Breaking strength of 1400 lbs
- Available in a variety of lengths
- Sleek brass pulling eye with large eyelet for easier access
- Light and durable steel frame with anti-corrosion surface treatment
- Adjustable knob allows for easy control of



Part# FS14200 - 1/4" x 200'  
Part# FS14250 - 1/4" x 250'  
Part# FS14300 - 1/4" x 300'  
Part# FS14400 - 1/4" x 400'  
Part# FS14500 - 1/4" x 500'  
Part# FS14600 - 1/4" x 600'

## FIBER RODDERS SPLICE KIT



FS12.END -End Repair for 1/2" Fibersnake  
FS12.EYE -Eye-Loop for 1/2" Fibersnake  
FS12.SPL -Splice Repair for 1/2" Fibersnake  
FS14.END -End Repair for 1/4" Fibersnake  
FS14.SPL -Splice Repair for 1/4" Fibersnake

## PLASTIC COATED GLOWFISH

**5/32" Diameter luminous rods**

Super flexible glow-in-the-dark rods with our new plastic coating process. Great for tight jobs. The handy clear carry case keeps them constantly "charged" and ready.

### KITS

GLF407 Glowfish Kit contains: 1 - 6' B/F, 4 - 6' M/F w/ tips  
GLF408 3' Glowfish Kit contains: 1 - 3' B/F, 7- 3' M/F rods w/ tips

## PLASTIC COATED FIBERFISH II

**3/16" Diameter orange rods**

The most versatile of the Fiberfish with our new plastic coating process. Perfect for a wide range of installation situations and challenges.

### KITS

PCF207 Fiberfish Kit contains: 1 - 6' B/F, 4 - 6' M/F w/ tips  
PCF208 3' Fiberfish Kit contains: 1 - 3' B/F, 7- 3' M/F rods w/ tips  
PCF230 "FourPack" contains: 1 - 3' B/F, 3 - 3' M/F, tip, and FishHook in vinyl pouch

## REPLACEMENT RODS

GLF403 6' Bullnose/Bullnose (B/B) rod  
GLF406 6' Bullnose/Female (B/F) rod  
GLF410 6' Male/Female (M/F) rod  
GLF414 3' Bullnose/Female (B/F) rod  
GLF415 3' Male/Female (M/F) rod



## REPLACEMENT RODS

PCF206 6' Bullnose/Female (B/F) rod  
PCF210 6' Male/Female (M/F) rod  
PCF214 3' Bullnose/Female (B/F) rod  
PCF215 3' Male/Female (M/F) rod





# *Gone Fishin'*





# JAVELIN

## ALL IN ONE DRILLING EXTENSION



Part# 95000

The Javelin is here to change the way we drill holes. Never get caught in a drilling extension jam again! This all-in-one extension drill can reach up to 10 feet. It comes with a fully adjustable hole cutter and auger bit extension kit. Just cut a 3/8" - 16 threaded rod to any length you need.

### FEATURES:

- Holds drivers bits
- Holds nut drivers
- Holds drill bits
- Reaches up to 10 feet long



## QUATTRO FLEX AUGER BITS

Fast and aggressive self feed auger bits, welded to a flexible shaft. Cuts clean holes. Crossbored at both ends for easy wire pulling. Use for wood only.

Part# QTT3824	3/8"x24"	Part# QTT1224	1/2"x24"	Part# QTT91624	9/16"x24"	Part# QTT3424	3/4"x24"
Part# QTT3836	3/8"x36"	Part# QTT1236	1/2"x36"	Part# QTT91636	9/16"x36"	Part# QTT3436	3/4"x36"
Part# QTT3848	3/8"x48"	Part# QTT1248	1/2"x48"	Part# QTT91648	9/16"x48"	Part# QTT3448	3/4"x48"
Part# QTT3854	3/8"x54"	Part# QTT1254	1/2"x54"	Part# QTT91654	9/16"x54"	Part# QTT3454	3/4"x54"
Part# QTT3872	3/8"x72"	Part# QTT1272	1/2"x72"	Part# QTT91672	9/16"x72"	Part# QTT3472	3/4"x72"

More sizes available



## HIGH SPEED STEEL

Superior quality M-2 High Speed Steel drill bit welded to a flexible shaft. Cuts both metal and wood. No need to worry about hidden nails or metal studs when drilling.

Part# FLX1424	1/4"x24"	Part# FLX3824	3/8"x24"	Part# FLX1224	1/2"x24"
Part# FLX1436	1/4"x36"	Part# FLX3836	3/8"x36"	Part# FLX1236	1/2"x36"
Part# FLX1448	1/4"x48"	Part# FLX3848	3/8"x48"	Part# FLX1248	1/2"x48"
Part# FLX1454	1/4"x54"	Part# FLX3854	3/8"x54"	Part# FLX1254	1/2"x54"
Part# FLX1472	1/4"x72"	Part# FLX3872	3/8"x72"	Part# FLX1272	1/2"x72"

## GUIDE TOOL

Allows the Piranhabits to bend for drilling from outside the wall cavity.



Part# FIB-GUD

# SWITCH BITS

## INTERCHANGEABLE FLEX BITS

Rack-A-Tiers is proud to announce the Switch Bit line, our newest line of flexible installer bits. Quickly and easily customize your own set with these flexible bits featuring interchangeable heads and different shank lengths to fit any job.

ETS31621	SINGLE SHANK	3/16"	21"
ETS31633	SINGLE SHANK	3/16"	33"
ETS31654	SINGLE SHANK	3/16"	51"
ETS31669	SINGLE SHANK	3/16"	69"
ETS1421	SINGLE SHANK	1/4"	21"
ETS1433	SINGLE SHANK	1/4"	33"
ETS1454	SINGLE SHANK	1/4"	51"
ETB38316	INTERCHANGEABLE HEAD	3/8"	
ETB916316	INTERCHANGEABLE HEAD	9/16"	
ETB3414	INTERCHANGEABLE HEAD	3/4"	

ETC38S316	SWITCHBIT COMBO HEAD (3/8") & SHANK (3/16" x 33")
ETC916S316	SWITCHBIT COMBO HEAD (9/16") & SHANK (3/16" x 33")
ETC34S14	SWITCHBIT COMBO HEAD (3/4") & SHANK (1/4" x 33")



## SOFFIT BIT FOR OVERHEAD SERVICE MASTS

The Soffit Bit is specifically designed to drill through a soffit in a single pass for an overhead mast. The Soffit Bit will drill through multiple materials including wood, nails, aluminum and more.

The Soffit Bit includes a built in arbor, wood or masonry bit.

Part#  
Wood Holesaw - 95224W  
Metal Holesaw - 95124M



**COMING SOON!** →





## OverDRIVE™ FAST BORING AUGER BITS

The Over-Drive boring auger bits are specifically designed to not bog down your battery drill. Designed with a 1/4" chuck and available in 3/4" and 7/8".

### Features:

- Available in 7" lengths
- 1/4" drill chuck
- Designed to put less strain on your battery drill

Part# AW34OD-3/4" x 7"  
# AW78OD-7/8" x 7"

## AUGER FILE DON'T THROW AWAY EXPENSIVE AUGER BITS!

Save those precious auger bits from being another dull tool lying around your shop or work truck. Save time and money by sharpening your bits from the comfort of your own home.

### FEATURES:

- Top teeth for auger's main cutters
- Side teeth for sharpening tip

Part# AUFILE

## CARBIDE TIPPED HOLESAW KIT



The carbide tipped holesaw kit is perfect for cutting through wood or drywall.

Included in the kit:  
- 2 1/2", 2", 1 3/4", 1 3/8",  
1 1/8", 7/8" holesaws.  
- Large and small arbor

Part# 96250

## 18" AUGER BITS

Part# AW3818 3/8"  
Part# AW1218 1/2"  
Part# AW11618 11/16"  
Part# AW3418 3/4"  
Part# AW7818 7/8"  
Part# AW118 1"  
Part# AW1418 1 1/4"

## 7 1/2" AUGER BITS

Part# AW3807 3/8"  
Part# AW1207 1/2"  
Part# AW11607 11/16"  
Part# AW3407 3/4"  
Part# AW7807 7/8"  
Part# AW107 1"

## NAIL CHIPPER & STANDARD CHIP AUGER

### STANDARD SHIP AUGER



Precision ground cutting edge for fast cutting of clean holes in wood.

Burr-free lead screw for easy starts and pull-through without material build-up.

### NAIL CHIPPER SHIP AUGER

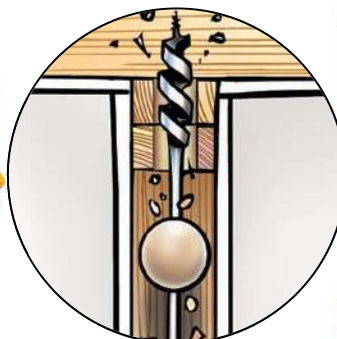


TRI-CUT design with 3 precision ground edges for fast, smooth cutting without resistance.

REDUCES NAILS TO CHIPS without grabbing and leaves a clean hole with minimal "blowout."

To order Tri-Cut Bits add a 'T' to the part #'s

# BUMPER BALLS



## AUGER SHAFT CENTERING TOOL

- No more bit walking, nail hitting, wall patching or carpet replacing
- Fits all 3/16" shaft auger bits
- Includes 1 each of 1-3/4" & 2-1/4" Balls (Drill Bits not included)
- New & Improved plastic model

Part# BB1520



BEFORE

AFTER



FOLLOW US ON



WWW.RACK-A-TIERS.COM

SALES@RACK-A-TIERS.COM

TOLL FREE: 1 (888) 939-9991



# CO-PILOT

PART# 91720

## FEATURES:

- Enlarge any hole while keeping it centered
- Hole enlargement made fast and easy in under 2 min
- Versatile fit works with all arbours
- Can be used for wood, plastic, drywall (limitations set by hole saw)
- Small enough to fit in most hole saw kits
- Accompany with the Dust Bowl for mess free result



## MULTI BIT: STEP DRILLS

Hardened stepped bits for clean cuts in sheet metal, electrical boxes, arborite, etc. Handy for creating knockouts. Made from high grade cobalt.

Part#

MLT1 - Size: 1/8" - 1/2" 13 Step

MLT3 - Size: 1/4" - 3/4" 9 Step

MLT4 - Size: 3/16" - 7/8" 12 Step

MLT5 - Size: 7/16" - 1 1/8" 12 Step

MLT7 - Size: 1/4" - 1 1/2" 11 Step



## THE GUIDE-O

The Guide-O allows you to enlarge holes utilizing a pilot bit the same size as the existing hole. By using a pilot bit that matches up to the existing hole, the hole cutter will stay centered while drilling the new, larger hole.

### FEATURES:

- Fits most standard carbide and bi-metal hole cutters
- Kit includes 1/2", 3/4" and 1" pilot bits
- Made from carbon steel
- \*Hole Cutter not included*



Part#s

94050 - 1/2"

94075 - 3/4"

94100 - 1"

94200 - Guide-O Kit (1/2", 3/4", 1")

94225 - 2 1/2" Shaft Replacement

94226 - 2" Shaft Replacement

94050B - 1/2" Bi-Metal

94075B - 3/4" Bi-Metal

94100B - 1" Bi-Metal

94200B - Guide-O Bi-Metal Kit (1/2", 3/4", 1")

## High Performance CARBIDE TIPPED STEEL CUTTERS

Part#s

92HC4 - Steel Cutters 7/8"

92HC8 - Steel Cutters 1 1/8"

92HC14 - Steel Cutters 1 3/8"

92HC20 - Steel Cutters 1 3/4"

92HC22 - Steel Cutters 2"

92HC24 - Steel Cutters 2 1/2"

92KIT4 - 4-Pc Set: 7/8", 1-1/8", 1-3/8", extra pilot bit

92KIT8 - 8-Pc Set: 7/8", 1-1/8", 1-3/8", 1-3/4", 2", 2-1/2", 2 extra pilot bits

### FEATURES:

- Ejector spring
- Tapered center drill
- Carbide tipping allows for repeated regrinding



### SDS BITS

Part# 91814 - Masonry Drill Bit SDS 1/4"

Part# 91838 - Masonry Drill Bit SDS 3/8"

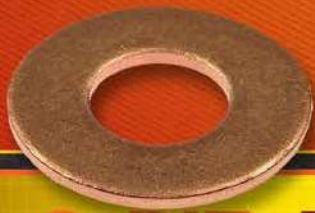




# COPPER WASHER

*SMALL SOLUTION FOR BIG PROBLEMS*

IN A BIND WITH YOUR HOLESAW? GET FREED UP WITH OUR COPPER WASHERS









Part#  
90512 - 1/2"  
90558 - 5/8" \*Packs of five

## Q-BIT: DRYWALL HOLE CUTTER



Q-BIT SAW SIZE CHART

PART #	BLADE SIZE						
42710	2 1/8" X 3 5/16"	X	X				
42740	2 1/4" X 3 5/8"			X			
42700	2 3/8" X 3 3/4"				X		
42720	3 3/4" X 4"					X	X



The Q-Bit is a revolutionary hole cutter that allows you to quickly cut out device holes. The Q-Bit is built to work with any standard oscillating tool



## ROUND MULTI-TOOL HOLE CUTTER

CUT HOLES WITH PERFECT PRECISION

THE ONLY ROUND MULTI-TOOL HOLE CUTTER ON THE MARKET

- Available in 3 different sizes
- The only multi-tool hole cutter
- Easy to mount & change
- No harbour needed
- No center guide needed
- Clean & fast

Part#  
42670 - 2 1/2"  
42675 - 3"  
42680 - 4"



*COMING SOON!*

\*Patent Pending



# SHARP POG

## OSCILLATING BLADE SHARPENER

Quickly & effectively sharpens oscillating saw blades with the use of a hand drill.



Part# H91538



# ELECTRICIAN'S KIT

## 4 OF THE MOST POPULAR STYLE MULTI-TOOL CUTTING BLADES



The Electrician's Kit has a great selection of blades that any electrician needs and would use on a regular basis! Featuring coarse and fine-tooth blades as well as bi-metal blades, this kit has everything you need for almost all applications.

Compatible with Milwaukee, DeWalt, Makita, Bosch & More

- Includes 2x Bi-Metal Blades and 2x Wood/Plastic Blades
- Cuts very quickly and neatly through wood & drywall
- Notch out joists and studs for cables & pipes
- Cuts out cabinetry for device boxes
- Remove baseboards for heaters and devices
- Creates minimal dust and disturbance
- Cuts easily in awkward access situations



Made In China

Part# H4EMK - Electrician's Kit (Four Blades)

Part# H32CJ1 - Japanese Tooth Blade 32mm

Part# H44BM1 - Bi-Metal Blade - 44mm

Part# H63CJ1 - Japanese Tooth Blade - 63mm

Part# H44TN1 - Titanium Alloy Bi-Metal Blade - 44mm

## WORK SMARTER NOT HARDER.

JUST ASK ANY MULTI-TOOL USER AND THEY ARE ALMOST GUARANTEED TO SAY "THEY DON'T KNOW HOW THEY GOT BY WITHOUT IT!"

Part# H44TN1

## 44MM ULTIMATE TITANIUM ALLOY BI-METAL SMART BLADE

The Titanium coated bi-metal blades are a great long-life blade solution. Made for cutting through wood AND nails and screws! The titanium coating helps reduce the heat build up on the blade, preserving the tooth design and maintaining a sharper blade for longer lasting cuts in wood!



NO MORE MESS EASY DISPOSAL OF DEBRIS WORKS WITH HOLE SAW UP TO 8" AND DRILL BITS TOO!

# Driller's Dust Bowl

THE FLEXIBLE DRILLER'S DUST BOWL COMPRESSES AGAINST THE WORK SURFACE AND TRAPS ALL DUST AND DEBRIS AS YOU DRILL. THE BOWL FITS YOUR DRILL AND HOLE SAW WITHOUT ANY ADJUSTMENTS NEEDED.



Part# 48000



**Mfg Note:**

You may enjoy a face full of drywall dust, but your customers might not. Put an end to "unprotected hole sawing" and wrap up with the Driller's Dust Bowl.



## Driller's Dustbowl PRO

NOW AVAILABLE WITH A VACUUM PORT FOR THOSE SUPER DUSTY

- The same great Dust Bowl now with a vacuum port for those super dusty jobs
- No more mess
- Works easily with your hole saw



Part# 48020

# HOLE-IN-ONE MULTI-FUNCTION HOLE CUTTER

SAVE YOUR LUNGS! CUTTING HOLES WITHOUT PROTECTION CAN BE HAZARDOUS TO YOUR HEALTH. PROTECT YOU AND YOUR CREW WITH THE HOLE-IN-ONE.



**CUTS THROUGH:**

- Plywood
- Fiber cement board
- Sheetrock
- Up to 20 GA. sheet metal
- Fiberglass
- Aluminum

**PILOT BIT**

Part# 90199



**CARBIDE REPLACEMENT BLADES**

Part# 90-VT



**HSS REPLACEMENT BLADES**

Part# 90-VH

Part No. 90200 - 1 7/8" to 9"  
Part No. 90300 - 1 7/8" to 12"  
Part No. 90400 - 1 7/8" to 17"



# CHIP CATCHER

The Chip Catcher adheres to metal surfaces using rare earth magnets. Metal shavings are attracted to the magnets embedded in the cylinder walls. Makes for easy clean up!



- Increases safety
- Magnet base attaches to metal surfaces & catches metal shavings
- Quick & convenient clean-up

Part# 84100



**\*NOT TO BE USED ON LIVE PANELS**

# DIRT BAG

*Electrical Safety Drilling Tool*

The Dirt Bag is specifically designed to eliminate metal shavings from spreading throughout a panel while drilling. Utilizing extra strong rare earth magnets in the frame, the Dirt Bag clings to the metal surface to catch all debris caused by drilling.

- Magnet in base of bag attracts filings
  - Increases safety
- Easily attaches to metal surfaces
- Made from non-conductive material
- Removable magnet included in bag pocket
  - Fits most panels



Part# 84000

**\*NOT TO BE USED ON LIVE PANELS**





# TREE HUGGER

## TREE MOUNTED LIGHT/BOX BRACKET

Patent# US62/983,388  
Part# 85200

**YOUR LIGHTS WILL GROW UP WITH YOUR TREES!**

The Tree Hugger bracket shifts with your tree as it goes wider and taller saving it from cracking or breaking. It will also save you time and money by cutting out the need to adjust the light focus points as the tree grows.

The slide is what makes it unique as a tree grows wider and taller.



## 6.5 INCH PLATE

### FEATURES:

- Installs in seconds with rare earth magnets - snaps in place to metal clips (included)
- White decorative plate covers 5-1/2" square hole or electrical box
- Can also be used to cover a round hole with up to a 5-1/2" diameter
- Visually appealing white decorative plate - no need to paint metal covers

Part# D612



## DRYWALL TRAPPER

Part# 48400



The Drywall Trapper was created to save time and money for AV & electrical contractors. Cutting into a drywall ceiling is an extremely messy task. The Drywall Trapper has changed all of that. Now you can be in and out of retrofit projects in a fraction of the time and stay clean and tidy.

- Traps the fine particles and large pieces while working overhead.
- Heavy duty vinyl provides a clear viewport to the cutting area.
- Large enough to cut holes for large speakers and light fixtures.
- Rugged construction for the most challenging environments.

Width: 20.5cm (8.07inch) / Height 14cm (5.51inch) / Base: 7.5cm (2.95in)



**COLLAPSIBLE EASY ASSEMBLY DURABLE VINYL WINDOW SOLID CONSTRUCTION**



Part# 32050



# POKE-E

## TAME YOUR CABLES

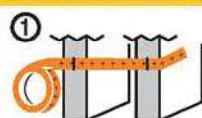
Dreamed up by an electrician who was tired of his wires being buried in the walls.. The **Poke-E** is a perforated strip that solves that issue by holding your cables in the exact place you intended them too. The Poke-E can be installed in the rough-in stage of construction in both residential and commercial applications.

**Install in 3 easy steps:** Nail, Cut and Poke

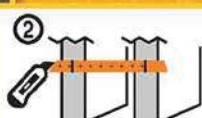
**Features:**

- Made in USA
- Holds up to a 1/2" fixed diameter cable
- Patent Pending

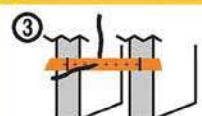
**The Poke-E is only intended for use with Class 2 wiring only.**



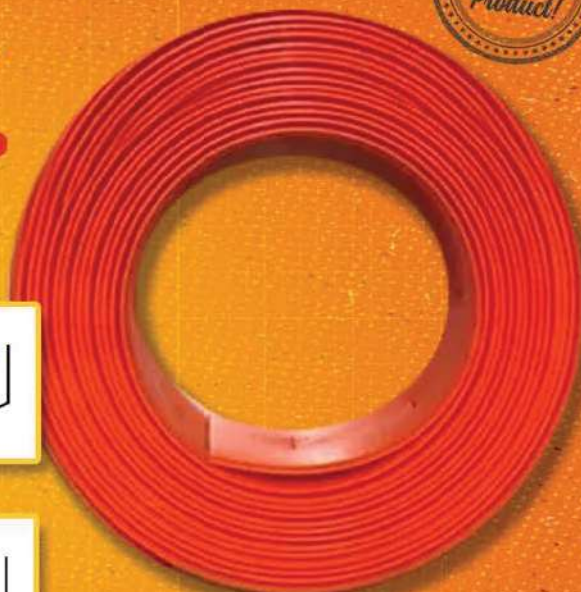
STAPLE



CUT



POKE



# LASER PLUMB BOB

Looking for a better way to lay out complex ceiling and high bays? The Laser Plumb Bob, self leveling vertical laser from Rack-A-Tiers is the answer!

**FEATURES:**

- Solid brass construction
- Factory aligned laser module calibrated to precise 0.15 accuracy
- Magnetic damping for quick stabilization
- Self leveling and aligning (vertically)
- Durable plastic carry case
- Battery included

**PART #**

88455 -LASER PLUMB BOB

**REPLACEMENT PARTS**

88-ARM - LASER PLUMB BOB ARM WITH MAGNET ATTACHED

88-BASE - LASER PLUMB BOB BASE

88-BAT - LASER PLUMB BOB BATTERY CR 123



*Before*



*After*



**MFG NOTE:**

For all commercial, industrial, or residential installations. Great for laying out ceiling lights.



# MAGNEPULL

Extremely powerful, yet delicate, magnetic wire snake for fishing wire through walls. It even works through insulation! This new version has a much stronger magnet and a smoother rolling surface.



## MFG NOTE

Any fiberfish can easily be threaded onto the magnet head. This will help push through dense insulation and guide through fire-block drill holes.



Part# 42800



## FEATURES:

- Hand roller with powerful magnet & smooth finish to avoid damaging walls
- 6' ball chain included
- Flexible leader with magnet head
- Also makes a great stud finder

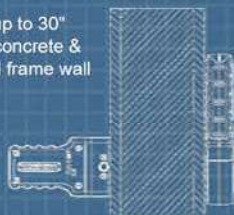
# MAGNESPOT



The Magnespot is a reference point locator that gives users complete self-assurance before drilling, cutting, or any other task you may previously had to do blindly. Place the Magnespot Transmitter on the wall, ceiling, or floor that you need to drill.



Senses up to 30" through concrete & 60" wood frame wall



On the other side hold the Receiver in the general direction of the transmitter, the red LED arrows on the Receiver will indicate to you which direction to move. When all 4 Arrows illuminate, the Transmitter and Receiver are lined up within a 1/2 inch.

Part# 42900

# LASERLINE

REDUCE EFFORT IMPROVE PRODUCTION CUT LABOR EXPENSE



## FEATURES:

- Accurately install a pull line up to 200ft
- Cuts labor costs and improves production
- Ability to span over heavy and hard to move objects found in many commercial structures
- Replacement line and darts available

## MFG NOTE

- The Laserline Kit includes 1 gun, 2 spools of line (1200 ft each), 2 darts and 2 generic CO2 cartridges.

PART #

83000 - LASERLINE KIT

83001 - REPLACEMENT LINE 2-1200FT

83003 - DART 3 PACK

Tired of wiggling through a crawl space just to drag your wire to the other end? Fire the Laserline, attach your wire, then walk around and pull it across while standing. It's that easy!

The CO2 powered gun shoots a foam dart with a line attached to it up to 200ft. Stop climbing your ladder and moving it every ten feet to pull your wire across a t-bar ceiling. Pull your wire the entire distance in one shot with the Laserline!



# COMBO TOOL BELT

## INCLUDES:

Molded support belt, Electrician's tool pouch, Large 9 pocket tool pouch, Hammer holster and tape holder.

## FEATURES:

- Reinforced with bar-tack stitching & heavy duty metal rivets
- 1250 denier DuraTek fabric with high density nylon webbing around pocket openings.



*Find Out More!*

Part#  
 43241 - Small Combo  
 43242 - Medium Combo  
 43243 - Large Combo  
 43244 - X-Large Combo  
 43245 - XX-Large Combo  
 43246 - XXX-Large Combo  
 43201 - Electrician's Tool Pouch  
 43202 - Lrg 9 Pocket Tool Pouch



# MOLDED AIR-CHANNEL SUPPORT BELT

## FEATURES:

- The first ever 'Molded Air-Channel Tool Belt' that offers incredible comfort, support, & ventilation for your back.
- The high density nylon 'Web Core' inside the padded belt provides strength to stitching & stress points.
- Metal rings are stitched to the belt's web core with high-density nylon webbing that provides the strongest way possible to attach suspenders.
- All stress points are reinforced with 'bar-tack' stitching along with heavy duty rivets.
- Double metal buckles that add strength and dependability.
- All of our belts and bags are made from double layered 1250 denier DuraTek fabric.
- Available in sizes from 26" to 54"

43401 - Small Belt  
 43402 - Medium Belt  
 43403 - Large Belt  
 43404 - X-Large Belt  
 43409 - XX-Large Belt  
 43410 - XXX-Large Belt



# SMALL 25 POCKET TRAY TOOL CARRIER

## FEATURES:

- 16 exterior pockets
- 9 interior compartments and pockets
- 1 qty 7" x 5.5" 12 compartment plastic tray
- 10.5" W x 10.5" L x 8" H
- Tape holder
- Includes shoulder strap

Part# 43707



# LARGE 44 POCKET TRAY TOOL CARRIER

## FEATURES:

- 29 exterior pockets
- 1 large clear pocket
- 14 interior compartments and pockets
- 2 qty 7" x 5.5" twelve compartment plastic tray
- Tape holder
- Includes shoulder strap

Part# 43706





# SNAP SACK

Part# 43150

## NEW CANVAS & LEATHER TOOL APRON



Most tool aprons are just made out of canvas, which is NOT the flimsy material you want full of screws, staples and countless other sharp objects – especially in such a sensitive area! If you want comfort, functionality and durability the Snap Sack is the apron for you. The leather lining will assure that you don't get poked, jabbed or shanked on the job!

### Features:

- No strings to tie or untie
- Clip to your belt with snap buttons or use the carabiners on your belt loops
- Leather liner helps protect from damage and poke throughs

## MOLDED AIR-CHANNEL SUSPENDERS

### INCLUDES:

- Adjustable thick molded foam shoulder pads
- 2" wide adjustable nylon straps
- Leather crossover divider
- Heavy duty spring hooks that attach to the rings on the molded Air-Channel belts

Part# 43606

### FEATURES:

Our popular padded suspenders easily clip onto the sturdy metal rings that are built into our tool belts. The padded shoulder straps make these the ideal set of suspenders for your tool belt rig.



## BUTT POUCH POCKET TOOL HOLDERS

### FEATURES:

- Quick to put on & COMFORTABLE!
- Tool pouches fit in your pocket
- Made of ballistic nylon
- Lightweight & durable



**GRANDE**

Part# 43095



**PAPA GRANDE**

Part# 43100



**MINI**

Part# 43015





# PROJOB

## Pants & Shorts



### Poly-Cotton Blend Multi-Pocket Protector Pants

#### FEATURES:

- Two hanging pockets that can be tucked away (One side has extra pockets, one side has tool slots)
- Tool pockets are reinforced with 100% Cordura
- Two adjustable hammer holders, cell phone pocket, two d-rings and pen pocket
- Opening on the inside for knee pads
- Material: 65% polyester, 35% cotton
- Color: Navy



### Mid Weight Shorts

#### FEATURES:

- Two hanging pockets that can be tucked away (One side has extra pockets, one side has tool slots)
- Tool pockets are reinforced with 100% Cordura
- Two adjustable hammer holders, cell phone pocket, two d-rings and pen pocket
- Material: 70% polyamide, 30% cotton
- Color: Grey



### Full Weight Multi-Pocket "High Vis" Protector Pants

#### FEATURES:

- Two hanging pockets that can be tucked away (One side has extra pockets, one side has tool slots)
- Tool pockets are reinforced with 100% Cordura
- Two adjustable hammer holders, cell phone pocket, two d-rings and pen pocket
- Opening on the inside for knee pads
- Material: 100% Cotton
- Color: Grey



### Mid-Weight Multi Pocket Pants

#### FEATURES:

- Contrasting tones construction pants with holster pockets that can be tucked in, one with extra pockets and one with tool loops
- The nail pockets are reinforced with Cordura®
- Deep side pockets with room for the hanging pockets
- Two adjustable hammer holders
- Two D-rings
- Folding rule pocket with tool pocket and knife button
- Height adjustable inside kneepad Cordura® pockets



\* FOR PART NUMBERS AND SIZING PLEASE VISIT [RACK-A-TIERS.COM](http://RACK-A-TIERS.COM)



# Exploding



## GARBAGE CAN ULTRA

Part# 51020



The Exploding Garbage Can Ultra is the new and improved pop-open garbage can. Utilizing the same concept as our Classic Exploding Garbage Can but featuring a reinforced hard bottom for increased durability. Perfect for on the job, camping, tailgating or landscaping.



# EXPLODING GARBAGE CAN Classic

Part# 51000

One of our classic tools that everybody loves, the Exploding Garbage Can comes in use every single day. This collapsible trash container, featuring an internal support spring that "springs into action", is made of heavy duty, tear resistant 600D Oxford Polyester fabric.



Find Out More!

### FEATURES

Size of 19" x 24" when open  
Size of 1 1/2" x 24" when collapsed



### FEATURES:

- Sturdy
- Comfortable
- Hook & Loop Straps

Part# 66455



*Gel Implanted*

## KNEE PADS

## BOOTIES

Booties available in bulk and bags of 6 pairs.

Part#

47095.B - Booties (25 Pairs)

47099BB - Six Pack of Booties





# STUD BALL

## MAGNETIC STUD FINDER

The Stud Ball is a protected magnetic stud finder that will out-perform all other types of magnetic stud finder on the market. Unlike other steel stud finders, the Stud Ball can detect metal through 1/2" or 5/8" drywall or other thicker building materials. Will also work through ceramic tiling and up to 3/4" plywood paneling.

### SEE IT IN ACTION



- Rare Earth magnets with 27 lbs of pull
- No batteries required
- Detects screws or nails in wood frame walls

Part# 52300



Part# 40905 - 1/2" thread  
40907 - 3/4" thread  
40910 - 1" thread

## PIPE SPINNER

**WRAP A 10 FOOT PIPE IN 10 - 20 SECONDS!**

The Pipe Spinner allows you to speed up the process of taping IMC, galvanized conduit or black iron conduit in mil tape for underground applications. Instead of taping the pipe by hand, simply attach The Pipe Spinner to your drill and have your co-worker hold the tape while you spin the pipe.

### FEATURES:

- 1/4" drill attachment for quick change drills
- Available in 3 sizes: 1/2", 3/4" and 1"
- Saves time and money



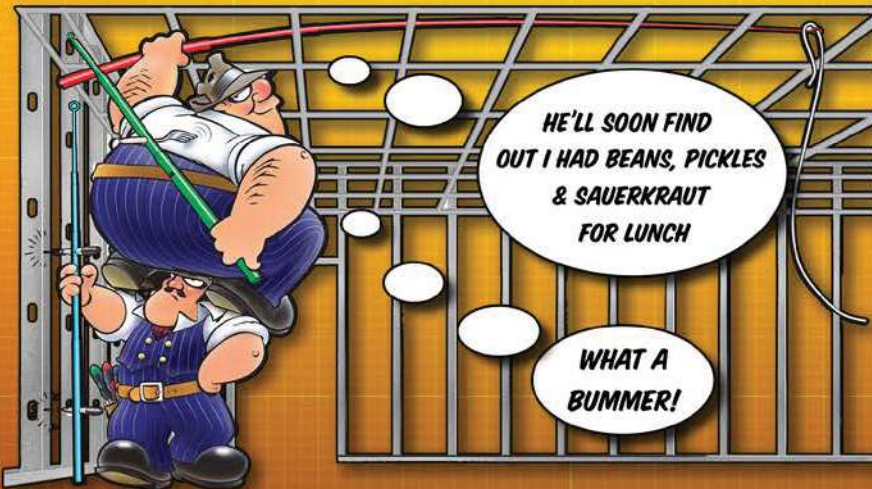
## THE ROUGH-IN STICK

The Rough-In Stick allows you to mark out devices conveniently and efficiently by utilizing specifically designed holes to fit your felt marker. The Rod also features a telescopic pole for those tricky fishes.

### FEATURES:

- Easily mark stud walls for device installation
- No need to use your tape measure while laying out devices
- Telescopic pole aids in pulling wire above ceiling grids and areas of limited access
- Extends up to 16'

MARK STUDS AT 12", 18", 42", 48" & 60"



Part# 82000







# GPS LIGHTLOCK ASTRONOMICAL TIMERS

**Onboard GPS does all your programming & maintenance**

GPS LightLock automatically sets your date/ time & location, programs the switch times for your location, self-recovers from power outages & keeps the clock timed to the GPS atomic clock. You'll never have to deal with controls maintenance again, and you never pay a fee to use the GPS system!

## Pays for itself many times over in servicing costs alone

Servicing controls is very expensive. Electricians perform hazardous work. They are well paid, as they should be. The retail price of GPS LightLock is a fraction of the cost of a single service trip charge to replace a photocell or re-program a timer.

GPS LightLock now offers custom programming to meet your requirements stored in memory forever, and you still won't have to program a timer ever again. Still self-recovers from power outages and still requires no user programming, maintenance or even batteries!



*See it In Action!*



### Twist-Lock Astronomical Timer 120-277VAC

Installs in under a minute!  
The world's only fully automatic astronomical timer. Switches lights dusk-to-dawn anywhere in the world. Plug & play. Never needs programming. Self recovers from power outages. Direct replacement for twist-lock photocells.  
**Part# 85-GPS-MV-T**



### Wire-In Astronomical Timer 120-277VAC

Our most popular model.  
Includes twist-lock astronomical timer plus wire-in twist-lock socket with 1/2" standard female thread. Direct replacement for all wire-in photocells and programmable timers.  
**Part# 85-GPS-MV-W**



**GPS SATELLITE SIGNAL**

**THE WORLD'S MOST ACCURATE  
TIME KEEPING SYSTEM**

**GPS LightLock**

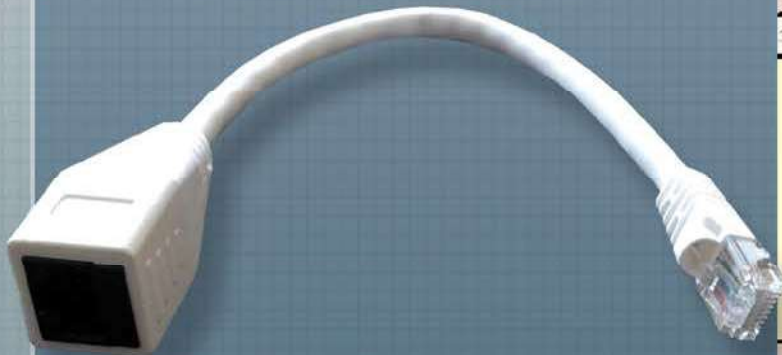
- Self-Programming
- Maintenance Free for 15 Years
- Self-Recovers from Power Outages
- No Servers, Software or Network Infrastructure
- Nothing to Learn, Monitor or Maintain

**THE WORLD'S MOST RELIABLE  
SMART TECHNOLOGY**

# TRACER WIZARD TONER ADAPTOR

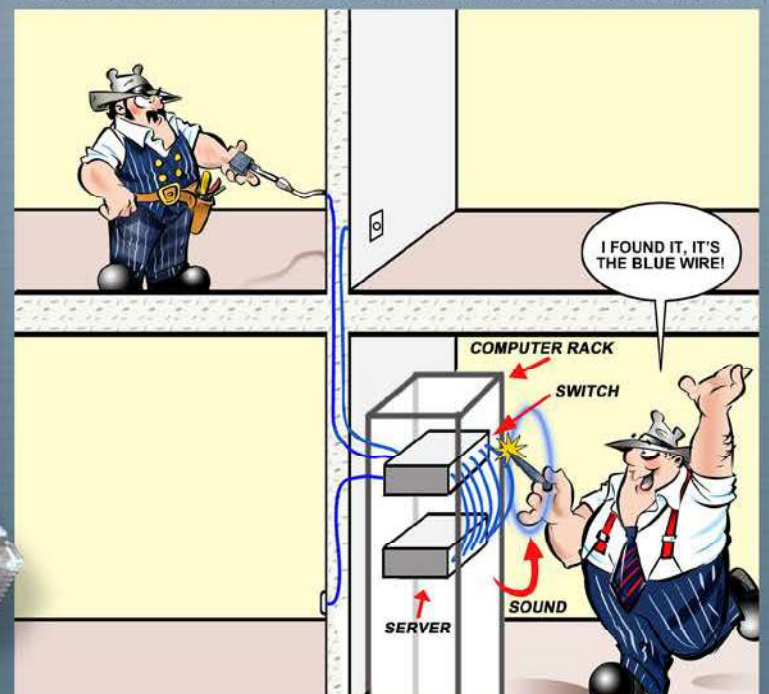
## Features:

- Devices do not have to be taken offline to tone out
- Locating cables is fast and easy as long as the Wizard is connected between the tone generator & jack
- A must have tool for a toolbox
- No batteries required



Part# 99060

**TURN YOUR ANALOG TESTER INTO A DIGITAL ONE!**





# FLASHLIGHTS



Part# 53600  
Stick Bug  
160 lumens

## THE STICK BUG

The Pocket Light just got brighter, stronger and better. Some call it supercharged! With the new technology of COB LED technology, it has 150/160 lumens - 2 times the amount of the original pocket light. With the durable and strong pocket clip and improved magnetic base, you'll never be left out in the dark again

### FEATURES:

- COB LED
- 160 Lumens
- Operates on (3) AAA batteries
- Up to 7 hours run time
- Water resistant button
- Batteries included



## THE SILVER BULLET Part# 53800

12-24v Car Charger Flashlight

### FEATURES:

- CREE LED 300 Lumen
- Li-ion Battery
- Aluminum Alloy
- Recharge Time 2-3 hours



## FIREFLY Part# 53400

The Fire Fly is a compact aluminum flashlight that features 3 light outputs with and has an output of 120 lumens.

### FEATURES:

- 120 lumen output
- Light Modes: High output, low output, flash
- Mechanical zoom function
- 3 AAA batteries included

## HEAD LIGHT

### USB RECHARGEABLE

Part# 54075

Bulb: COB LED

Max Output: 150 Lumens

3 Modes: High, Low and Strobe

Runtime: High (4 Hours) Low (12 Hours)

4-hour charge time

Impact and Water Resistance

## BAT LIGHT

The Bat flashlight has a durable, scratch and corrosion resistant anodized aluminum frame.

12" Bat Flashlight

Part# 53750

- 3W Cree LED 300 Lumens

- 3 x AAA Batteries Included

## LED SAFETY HEADBAND LIGHT

The Safety Headband Light attaches to any hard hat and produces a ring of light around the wearer, enabling him or her to be easily seen in all directions.

### FEATURES:

- Shadow-free, panoramic visibility
- Non-slip hard hat attachment
- Only 40 grams (1.4 oz) extra hard hat weight
- Powered by two button cells or rechargeable LED
- Operates up to 24 hours with premium brand batteries or USB Charger



Part#'s

54000 - Standard

54020 - Rechargeable

# MAGPIE

Bilateral Laser Measurer



FIND THE CENTER OF A ROOM FOR EASY LIGHT INSTALLATION

7FT

9FT



Before



Part #45600



# PLUG MASTER

The Plug Master combines a full function dual-outlet circuit tester with 220V detection and multiple direction bubble-levels. Eliminate the need for multiple tools to test and straighten any wall outlets.

## FEATURES:

- Acts as horizontal and vertical level
- Use for diagnostics
- Perform quick wiring checks
- Panel identifies conditions shown by LED indicators
- Removable side panels cover outlet during insertion



Part# 99102

# AC SENSOR & ULTIMATE AC SENSOR

Prevent electrical shock with this simple tool to locate dangerous defective grounds. This handheld device helps you determine the presence or absence of 50-1000 Volts AC in insulated wires, wall receptacles, fuses, junction boxes, and voltage carrying electrical systems. The bright, red glow indicates AC voltage.

## FEATURES:

- Non-contact detection of 50-1000 VAC
- Includes 2 replaceable AAA alkaline batteries
- Senses voltage without metallic contact
- Outstanding safety instrument



Part# 99000 (Red Glow - No Sound)

Part# 99001 (Red Glow - w/Sound)

# DUALCHECK™ NON-CONTACT VOLTAGE TESTER

Part# 99150

Save time and money with 2 popular testers in 1 unit - featuring a Non-Contact Voltage Detector on one end and GFCI Outlet Tester on the other.

## FEATURES:

- 360 degree LED indication
- Loud beeping audible indication
- Exclusive 1 LED readout. No Charts. Instant results
- On/Off button



# AC SPLITTER

The AC Splitter features a receptacle and GFCI tester as well as the ability to measure the current through the measuring rings.



## Features:

- Voltage measurement ring
- Current measurement ring (x10 and x1)
- GFCI button
- Socket connection indicators
- Current maximum: 15A
- Input voltage: 120V

Part# 99020



BACK BY POPULAR DEMAND!

# LADDER MATE



\*Tools sold separately  
Part# 65300

## MULTI-USE LADDER ORGANIZER

### TOOL HOLDER & PAINT TRAY WITH ADJUSTABLE DIVIDERS

- EASY TO ATTACH
- ADAPTER CLIPS INCLUDED
- WORKS WITH MOST FIBERGLASS, ALUMINUM & WOOD STEP LADDERS



# STEPDEK

## A MUST HAVE TOOL FOR ANYONE WHO WORKS ON LADDERS!

The Stepdek easily attaches to the ladder rung which provides a wider platform for users to stand on.

### PRODUCT FEATURES:

- Helps prevent ladder fatigue
- Provides a safe & comfortable step to stand on
- Durable aluminum design

- Rubberized non-slip comfort pad
- Light weight & fits in tool bags
- Easily attaches to most A-frame ladder
- Reusable

A portion of each sale is donated to help those in need



Part# 65250



# Aerial Tool Bin



The Aerial Tool Bin offers a safe and efficient way of storing your tools at waist height while on a variety of Man-Lifts. It is designed to be used on: Aerial Platforms, Scissors Lifts, Boom Lifts, Scaffolding, Swing Stage Railings, and Mast Climbers.

Part# ATB1312



## STAPLESHARK

### FEATURES:

- Includes a handy staple puller and pry bar for multi-purpose use!
- Ruler for quick on the job measurements.
- Use as a quick carpenter's square.
- Holds staples in tight spots and will open a beer bottle at the end of



STAPLE PULLER!



HOLDS STAPLES!



PRY BAR!



RULER!



BEER OPENER!



Part# 52455





## NEEDLE NOSE WIRE STRIPPERS

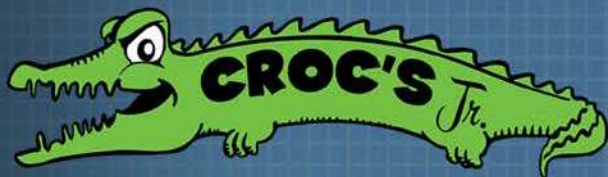
Sometimes referred to as the best wire strippers on the market, the Croc's Needle Nose Wire Strippers will impress even the toughest critics. These strippers have countless features, each designed to make your job easier and more productive.

### FEATURES:

- Glow in the dark handles
- Ergonomic handle design for maximum comfort
- Needle nose tips
- Strip from 22-10 AWG
- Barrel Sleeve Crimper
- NMSC cutter near the "nose" of the stripper
- 8-32 and 6-32 bolt cutters

Part# 47000

SEE IT IN ACTION



Introducing the Croc's Jr., A compact and lightweight version of the original. This model serves as an affordable predecessor to the original without skimping on its numerous applications.

### FEATURES:

- Glow in the dark handles
- Ergonomic handle design for maximum comfort
- Compact design
- Strip from 22-8 AWG
- 8-32 and 6-32 bolt cutters

Part# 47002



## V-CUTTER

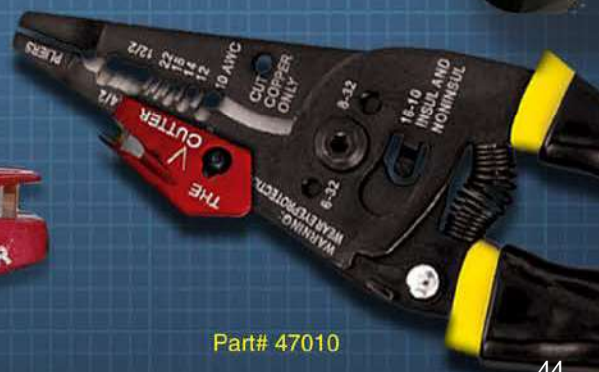
### ELECTRICIAN'S ADD-ON CABLE STRIPPER

STRIPS CABLE IN OR OUT OF ELECTRICAL BOXES WITH EASY TO PUSH ACTION

One of the smartest inventions to come to market this decade is the V-Cutter. This simple little blade attaches to most wire strippers and allows you to strip cable with a single swipe.

### FEATURES:

- A new way to strip NMSC cable
- Easily attaches to most wire strippers
- Strips cable in or out of electrical boxes with action
- Virtually eliminates nicking or cutting the wire insulator



Part# 47010



# PANEL BUDDY

## KNOCKOUT SYSTEM

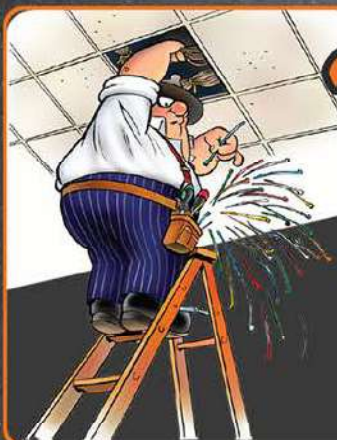
Tired of trying to remove knockouts? Let the Panel Buddy take care of them for you. This simple but genius tool removes knockouts in half the time, with half the effort.



### FEATURES:

- Kit removes knockouts on Electrical, Security, Alarm, and Datacom Panels
- Works with lipped and non-lipped panels

Part# 7WBK100



## Tie Lips

Spend more time installing and less time picking up. The Tie Lips will hold your cable ties conveniently on your belt.

### Features

- Keeps your ties in place
- Quick and easy dispensing
- Holds different types and sizes
- Includes handy belt clip



Part# 43800

# NUT BLASTER

## UNIVERSAL WIRE CONNECTORS



- Fast, easy installation
- Prevents sore fingers and cramping hands
- Available in two sizes

### Part#

72101 - XL

(Fits all brands yellow, tan & red twist on wire connectors)

72102 - XXL

(Fits all brands large grey & blue twist on wire connectors)



## NUT BLASTER

### In-Store Display

Contact us to order this counter display. Other counter displays also available.



# SLUGGOX<sup>TM</sup>

## THE SLUGGO-OX IS THE ULTIMATE GROUND ROD DRIVING TOOL.

Just one piece and incredibly strong. It delivers the kind of power and strength you need to easily install ground rods, rebar, & other metal objects.



### FEATURES:

- Incredibly strong: made of 3" hot-rolled, heat-treated, hardened steel
- 3 1/2" bore to accept 3/4" and 5/8" ground rods
- 80% more striking surface
- Yellow zinc chromate surface to deter rust



# ALIGNMENT TOOL

Utilizing rare earth magnets, the alignment tool easily snaps into place and allows you to align all your 3/4" conduit without the need for a level or measuring tape.



BEFORE

AFTER



Part# 68075

Part#13355



# PLATE VISE

1" Pipe & Conduit

1 1/4" - 1 1/2" Pipe & Conduit

2"x2", 2"x4", 2"x6" Lumber

3"- 4" Pipe Conduit  
4"x4" Lumber & 4" Angle Iron & Tubing

1"x2" Lumber & 7/8" Unistrut

2" - 2 1/2" Pipe & Conduit & 2" angle Iron & Tubing

1/2" - 3/4" Pipe & Conduit



- This one size fits all
- Holds many sizes of pipe, lumber, unistrut, and more
- Contact points do not allow materials to move or spin
- Labor and time saving
- Lightweight and portable

I SURE COULD HAVE USED THAT LAST WEEK





# MAG DADDY

## MAGNETIC FASTENERS



MAG DADDY MAGNETIC FASTENERS UTILIZE ULTRA-STRONG MAGNETS TO STRAP WIRE AND CABLE. MAG DADDY MAGNETS WILL STAY ATTACHED THROUGH OIL, GREASE, PAINT OR DIRT. A VARIETY OF CONFIGURATIONS ARE AVAILABLE TO SUIT YOUR NEEDS.

### CABLE HOLDERS



**Magnetic Cable Holder (10 Pack)**  
 Part# RM050BK - 1/2" Black  
 Part# RM050WT - 1/2" White  
 Part# RM075BK - 3/4" Black  
 Part# RM075WT - 3/4" White  
 Part# RM100BK - 1" Black  
 Part# RM100WT - 1" White

### CABLE TIE MOUNTS



**Magnetic Cable Tie Mount (10 Pack)**  
 Holds Standard Zip Ties  
 Part# RM110BK - 10 lb Black  
 Part# RM110WT - 10 lb White  
 Part# RM115BK - 15 lb Black  
 Part# RM115WT - 15 lb White

### MAGNET MOUNT



**Magnet Mounts (10 Pack)**  
 Part# RM164SL - 19 mm/16 lb Silver  
 Part# RM265SL - 23 mm/26 lb Silver  
 Part# RM266SL - 26 mm 26 lb Silver



**Magnetic Clamp (10 Pack)**  
 Magnetic Strength: 15 lbs.  
 Part# RM051BK - 1/2" Black



**Female Magnet Mount**  
 1/4-20  
 Part# RM420FM



**3/4" Wide Cable Mount (10 Pack)**  
 15 lbs Black  
 Part# RM215BK



**Mini Magnet Cable Tie Mount (10 Pack)**  
 Color: Black  
 Magnetic Strength: 5 lbs  
 Part# RM020BK



**Top J-Hook (10 Pack)**  
 360° Rotation  
 Part# RMJ075T - 3/4"  
 Part# RMJ131T - 1 5/16"  
 Part# RMJ200T - 2"



**Side J-Hook (10 Pack)**  
 360° Rotation  
 Part# RMJ075S - 3/4"  
 Part# RMJ131S - 1 5/16"  
 Part# RMJ200S - 2"



**Cable Hanger**  
 Cable Hanging Tool  
 Part# RM300HT



**Magnetic Bridle Ring**  
 Part# RM125BR - 1.25" 1/4-20  
 Part# RM200BR - 2" 1/4-20



**1 x 7/16" Zip-Tie Pipe Mount**  
 Part # RM1716BK

## VAN MAGNETS

Got a disorganized van? Snap some Van Magnets into place to hang tools, material, etc. to keep your vehicle nice and tidy.



\*All Van Magnets include carabiner



10 lbs 4 Pack  
 Part# RV010



25 lbs 3 Pack  
 Part# RV025



50 lbs 2 Pack  
 Part# RV050





# CABLE MOUNTS

The Rack-A-Tiers Saddle Support is a saddle where you put a screw through an d strap wire with tie wraps. Let's be honest, Rack-A-Tiers didn't reinvent the wheel with this one, but we did reinvent the price.

Another exciting, already available product we're adding are the 4-way adhesive cable tie mounts in 2 different sizes. You know what these are for. Buy them from us if you would like to.

**Part# RC215WT**

Cable Tie Saddle Support White  
1.5" (100 pcs)

**Part# RC4150WT**

Cable Tie Mount 4-Way Adhesive White  
1 1/2" (100 pcs)

**Part# RC410WT**

Cable Tie Mount 4-Way Adhesive White  
1" (100 pcs)



## CHASE STRAP CONDUIT BRACKET



The Chase Strap secures the short piece of conduit extending from one room to another through a sheetrock wall or other barrier such as a concrete riser. The strap is made from galvanized steel and is available in multiple sizes.

**Part#**

RCS100 - 1" Chase Strap  
RCS200 - 2" Chase Strap  
RCS400 - 4" Chase Strap



UL Listing E507150



**Winnie Industries**

MANUFACTURER OF FASTENING SUPPORTS



### MAGNETIC CABLE TIE MOUNTS



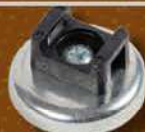
**16 LB Magnetic**  
Cable Tie Mount - UV Black  
Part# RMW016BK



**16 LB Magnetic**  
Cable Tie Mount - UV Black  
Part# RMW016WT



**26 LB Magnetic**  
Cable Tie Mount - White/Natural  
Part# RMW026WT



**26 LB Magnetic**  
Cable Tie Mount - UV Black  
Part# RMW026BK



**100 Lb Magnetic Mount**  
1/4-20 Threaded  
Part# RMW1420F



**26LB Magnetic**  
1 inch wide, Grip Tape Mount  
- UV Black  
Part# RMW226BK

### MAGNETIC BRIDLE RINGS



**26 Lb Magnet**  
3/4" Magnetic Bridle Ring,  
Small Standoff, Zinc Plated  
Part# RMW075BR



**100 Lb Magnet**  
1 1/4" Magnetic Bridle Ring,  
Small Standoff  
Part# RMW125BR



**100 Lb Magnet**  
2" Magnetic Bridle Ring,  
Small Standoff  
Part# RMW200BR



# FILLERS & CONNECTORS

## KO KILLERS: PLASTIC KNOCKOUT FILLERS

Fits thin (1/32") and thick (1/8") wall thickness.

### Features:

- No tools required
- Snap in and out with ease
- Non-conductive, safer



- Part# KOK50 - 1/2" Filler (50/bag)  
 Part# KOK75 - 3/4" Filler (50/bag)  
 Part# KOK100 - 1" Filler (25/bag)  
 Part# KOK125 - 1 1/4" Filler (25/bag)  
 Part# KOK150 - 1 1/2" Filler (25/bag)  
 Part# KOK200 - 2" Filler (25/bag)  
 Part# KOK999 - Assorted Fillers Kit (25/bag)



## RAT 500

Rapid Fire NMSC connector (100 Pack)

Suitable for all 1/2" knockouts  
 Fast and Easy. No tools required

### Features:

- 100/bag
- Single cables
- Two cables
- Install from outside

## RAT 750

Rapid Fire NMSC connector (50 pack)

Suitable for all 3/4" knockouts  
 Fast and Easy. No tools required

### Features:

- 50/bag
- Single cables
- Install from outside



- Part#  
 RAT500 1/2" Connector  
 RAT750 3/4" Connector

<b>RAT750 - 3/4"</b>	Single Cable:	8/3, 6/3
<b>RAT500 &amp; TT500 - 1/2"</b>	Single Cable:	14/2, 14/3, 12/2, 12/3, 10/2, 10/3
	Two Cables:	14/2, 14/3, 12/2

## TT500

NMSC Two Way 1/2" Connector (100 Pack)

Installs from inside and outside the box

### Features:

- 100/bag
- Single cables
- Two cables

Part#  
 TT500



## STUD BUDDIES

(100 Pack)

Why Square Bushing? 70%

- More cross sectional area!
- More cables, easier pulls.
- One piece
- One hand installation
- Fits all standard steel studs & punches
- Fire rated V.O.
- Faster, easier to use

- Part#  
 SB220 - ROUND  
 SB240 - SQUARE



## BUCKETS

Our same great connectors now available in bulk bucket form!

### Part#s

- RAT500.B2 - 1/2" Connector Qty. 200  
 RAT500.B4 - 1/2" Connector Qty. 400  
 TT500.B2 - 1/2" Tom 2-Way Connector Qty. 200  
 TT500.B4 - 1/2" Tom 2-Way Connector Qty. 400

## LEVEL JACK

### HOW DOES IT WORK?

Alignment tabs reach across wood/metal studs to level low voltage outlets with A.C. boxes.

### NO TAPE MEASURE • NO LEVEL REQUIRED

Available in 1/2" and 1" rise

If you're fussy about your rough-in layout, the Level Jack makes life easy. If you're not, no one will notice because you can't screw up with the Level Jack.

Just clip it on to the AC box and screw it down. No level, no tape measure, no special boxes, no special fittings required. Level Jacks fit most AC boxes.



- Part#  
 LJ50R - 1/2" (30 pack)  
 LJ100R - 1" (15 Pack)





# SHIM MY BOX

Part# S1203  
9" Length Tubes for Electrical Switches (4/bag)

Tired of twisting wire into a coil or trying to track down washers to shim your plug or switch? With the Shim My Box all you have to do is cut the length you need from this straw like piece.



## AIRCRAFT CABLE & WIRE CRIMPS

- Available in 500 and 1,000 Feet.
- No need to go anywhere else - Buy it from us!
- Diameter of cable: 1/16"

Part# SC500  
Aircraft Seismic Cable 500'  
Part# SC1000  
Aircraft Seismic Cable 1000'  
Part# SCC116  
Aircraft Seismic Cable Crimps (100 pack)



*Features:*

- Quickly and easily supports multiple electrical cables.
- Hold up to 24 cables with one support.
- Greatly reduces labor time.
- Innovative design allows multiple cables to be installed in confined areas with ease.
- Rigid plastic injection molded
- US Patent Pending
- Made in the USA



H2 Homer Helper's are intended to support multiple NM-B, MC, and Low Voltage cables in electrical home runs. They will greatly reduce labour time and eliminate the use or need for staples.



Part# H2024

Width: 20.5cm  
Height: 14cm  
Base: 7.5cm



## CROWS FEET



### 3/8" Metal Flange

Crow's Feet are a galvanized steel ceiling flange designed to accommodate 3/8" threaded rod.



\*100 per box  
Part# SCF38



# COUNTERTOP BOXES

\*Please note, the receptacle for the countertop pop up has changed to the gray colour seen below excluding the brass model.

Rack-A-Tiers pop-up boxes offer a sleek and compact design and are a great option for installing a pop-up outlet into a countertop or floor. Pops up while in use and is out of the way and flush when pushed down.



## SQUARE COUNTERTOP POP-UP BOXES

### SQUARE COUNTERTOP POP-UP PLATE ASSEMBLY WITH 20 AMP GFI RECEPTACLE

STAINLESS	- PART# VPU.SS
BLACK	- PART# VPU.BK
BRASS	- PART# VPU.BR
WHITE	- PART# VPU.WT



### SQUARE COUNTERTOP POP-UP PLATE ASSEMBLY WITH 20 AMP W/2 USB

STAINLESS	- PART# VPU.SS.2USB
BLACK	- PART# VPU.BK.2USB
BRASS	- PART# VPU.BR.2USB
WHITE	- PART# VPU.WT.2USB

## DESKTOP TOWER POP-UP OUTLETS

The tower pop-ups are available in multiple configurations and colours. Please visit our website for more information and part numbers.



\*Wireless charging units available



\* 120V male cord end attached on all models.



Pops up when needed, tucks away when not!



# FLOOR BOXES



## SQUARE FLOOR POP-UP BOXES WITH SLIDE BUTTON

SQUARE POP-UP FLOOR PLATE ASSEMBLY WITH 20 AMP GFI RECEPTACLE

STAINLESS - PART# VFPU.SS.GFI  
BRASS - PART# VFPU.BR.GFI

SQUARE POP-UP FLOOR PLATE ASSEMBLY WITH 15 AMP W/2 USB

STAINLESS - PART# VFPU.SS.2USB  
BRASS - PART# VFPU.BR.2USB



SQUARE POP-UP FLOOR PLATE ASSEMBLY WITH 15 AMP

STAINLESS - PART# VFPU.SS  
BRASS - PART# VFPU.BR

SQUARE FLOOR POP-UP PLATE ASSEMBLY INCLUDE VPU.WB WOOD ENCLOSURE BOX. CONCRETE BOX SOLD SEPARATELY - PART# VPU.CB

## ASSEMBLED FLOOR BOXES

## PLASTIC QUICK INSTALL FLOOR BOXES



HINGED SINGLE GANG

ALUMINUM - PART# VRHC.AL  
BRASS - PART# VRHC.BR



HINGED ROUND

ALUMINUM - PART# VRHB.AL  
BRASS - PART# VRHB.BR



MEDALLION SINGLE GANG

ALUMINUM - PART# VRMC.AL  
BRASS - PART# VRMC.BR



MEDALLION ROUND

ALUMINUM - PART# VRMB.AL  
BRASS - PART# VRMB.BR

**\*NOT TO BE USED IN CONCRETE**

## ROUND FLOOR BOXES



ROUND FLOOR POP-UP PLATE ASSEMBLY WITH 15 AMP DECORA

STAINLESS - PART# VPU.FD.SS  
BRASS - PART# VPU.FD.BR

ROUND FLOOR POP-UP PLATE ASSEMBLY WITH 15 AMP GFI

STAINLESS - PART# VPU.FB.SS  
BRASS - PART# VPU.FB.BR

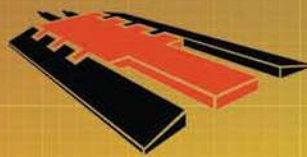


ROUND FLOOR POP-UP PLATE ASSEMBLY WITH 6 DATA PORTS

STAINLESS - PART# VPU.FC.SS  
BRASS - PART# VPU.FC.BR

ROUND FLOOR POP-UP PLATE ASSEMBLIES DO NOT INCLUDE ENCLOSURE BOX. WOOD BOX, PART# VPU.WB AND CONCRETE BOX, PART# VPU.CB, SOLD SEPARATELY.





# ELASCO PRODUCTS



## EXTREME CABLE PROTECTION

**DURABLE**

**LONG LASTING**

**LIGHTWEIGHT**

**EASY TO USE**

### DROP OVER COLLECTION

Elasco Drop Overs are quick and easy to install, protecting everything from small wires to large pipes. These cable management Drop Overs come with a single channel, but can accommodate a multitude of pipes or wires within their protection.



### GLOW COLLECTION

Elasco now offers the most visible glow in the dark cable protectors in the industry.



### LITEGUARD COLLECTION

Commonly used in vehicle or pedestrian settings, the LiteGuard collection provides invaluable protection. Although smaller in size and weight, these products are still designed for significant load bearing strength.



### ULTRAGUARD COLLECTION

The Ultraguard collection offers an extra low profile and push buttons attached to lid, ensuring extra lid closure and cable security.



### HEAVY DUTY COLLECTION

The Heavy Duty collection has been protecting cables and wires for over 25 years and is available in one, two, three, and five channel cable guards. Offering extra load bearing capacity, compared to the lighter duty - the MightyGuard collection will stand the test of time.



### XTREME DUTY COLLECTION

The XtremeGuard Collection offers multiple channels able to accommodate 4" size hoses, cables, and pipes. With bonus 2" size channels, this patent pending design is the first and only product like it on the market, able to withstand almost any load capacity requirement.



FOR FULL SIZING CHARTS, PART NUMBERS AND MORE INFORMATION PLEASE VISIT [RACK-A-TIERS.COM](http://RACK-A-TIERS.COM)

### ULTRA-SIDEWINDER CABLE PROTECTION SYSTEMS

#### FEATURES:

- Articulation pieces offer flexible design - curves, corners & s-curves are easily made while maintaining a completely flat profile.
- Simple installation. No tools required.
- Available in black, yellow, brown, and gray.
- Fully-customizable length - From 4.5" to an unlimited length.

For part numbers visit [Rack-A-Tiers.com](http://Rack-A-Tiers.com)



### TEMPORARY CABLE GUARD

The Temporary Cable Guard withstands heavy vehicle traffic without damaging cable. Easily anchored with concrete screws if needed. The Temporary Cable Guard helps you restore services quickly by allowing you to run temporary cables over most any surface. It reduces truck rolls and eliminates downtime due to cable cuts, storm damage, traffic or roadway activities.



For part #s visit [Rack-A-Tiers.com](http://Rack-A-Tiers.com)



**cable  
clear**

CableClear is a patented new cable management product for wall mounted TV's enables you to quickly and easily hide eyesore TV cables inside the stud wall without any special DIY skills. Add cables seamlessly at any point and time after the CableClear kit is installed. CableClear creates a 50mm (2") conduit inside the wall cavity so that you can fish the cable through and hide them completely. There is no damage to the wall during cable installation so there's no repairing or re-painting afterwards.

**FEATURES:**

- Kit includes: elbow wall clips, hose, hole saw, plumb bob, and nose cone
- Designed for all stud walls 70mm (2 3/4") and thicker
- Fits plaster/drywall up to 13mm (1/2") thick
- Hose length is fully adjustable
- Additional cables can be added later
- Creates a sealed duct
- Components comply with UL 94V-0 plastics flammability standards

CC001 - Cable Clear Kit

CC002 - Cable Clear Extension Kit

CC003 - Replacement Part - Elbow Fitting

CC004 - Replacement Part - Hose w/ Connectors

CC005 - Replacement Part - Hole Saw

CC006 - Replacement Part - Plumb Bob

CC007 - Replacement Part - Insulation Cone



# TEMP-IT

**Features:**

- Fits in most residential LED recessed cans
- Uses A-19 Medium Base LED light bulb only
- Sold in boxes of 12 (lamps not included)

"TEMP IT" is a product designed for temporary lighting for LED recessed can installation. This temporary lighting socket allows for immediate, convenient lighting during construction without using the costly led trims. "Temp IT" fits in most residential led recessed cans. Just plug the orange LED socket into your LED recessed can and attach an A-19 medium base led light bulb. Messy supplemental cord lighting and big stand up halogen lamps are no longer a necessity.



Part# 99050



# PROLOCK

For Secure & Safe Connections

## Single End Extension Cord

- Molded ProLock connectors will not pull away from the cord body; offers extra water resistance.
- Automatic locking feature; insert male end into Pro Lock connector and push together to lock. Pull collar down to unlock.
- High impact polycarbonate on both housing & collar guarantees hard service, with extra heavy duty use.
- Lighted Amber Power Check plug & ProLock connector indicates power is running through the cord and connector.
- Special cold weather (-58°F) PVC jacket guarantees flexibility in temperatures well below freezing



## Extension Cord Connector

- Specially designed automatic locking feature: insert male blades and pins into the Pro Lock connector and push together to lock; pull the collar down to unlock.
- We use high impact polycarbonate on both housing & collar to guarantee hard service, extra-heavy duty use.
- Temperature Range: -40°F to +160°F.
- Pull Strength: 80 Lbs Horizontally or vertically.

Our patented ProLock mechanical connector was designed to prevent all extension cords with standard straight blade 15A-125V plugs and connectors from pulling apart. It eliminates the problem of accidental disconnects that result in unnecessary power loss. Fits all standard 15A-125V U-Ground ends.



Part#

98000 - ProLock Cord Connector Black

98050 - ProLock 50' 12/3 Extension Cord

98100 - ProLock 100' 12/3 Extension Cord





WE HAVE THE  
POWER TO FIND  
YOUR MONITORING  
SOLUTIONS

WE WANT TO COVER ANY SCENARIO YOU CAN THINK OF.  
THIS EXPANDING CATEGORY IS ON THE UPSWING, LET US  
HELP YOU FIND THE RIGHT DEVICE.

CONTACT US WITH YOUR POWER MONITORING QUESTIONS.  
WE WILL FIND THE RIGHT SOLUTION FOR YOUR NEEDS.

POWER MONITORING IS A NEWLY EXPANDING CATEGORY AT RACK-A-TIERS. IF YOU ARE LOOKING FOR SPECIFIC DEVICES TO MONITOR POWER WE CAN ASSIST IN SOURCING THE RIGHT SOLUTIONS.



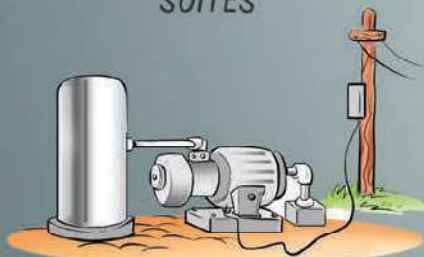
SUITES



MOBILE HOME PARK



EV STATIONS



REMOTE LOADS



FARMS



SOLAR



# EFERGY ELITE Classic Wireless Energy Monitor

Part# EF003



**SAVE UP TO 15% ON YOUR ELECTRICITY BILL THROUGH GREATER AWARENESS!**  
The Elite Classic is our latest and renewed version of our Elite Wireless Power Monitor. It updates every 10 seconds so you can instantly see the impact of turning a light on or off, boiling the kettle or using your tumble dryer. It has an innovative memory function that allows you to see how much you have used today, yesterday and in the last week or month. The Elite Monitor also displays your daily average so you can see when you are using more electricity than normal and see how your average usage reduces as you change the way you do things - Great for sub panels to monitor tenant energy use.

## Accessories

### 200A Current Sensor

Additional sensor for measuring current up to 200 amperes. Works with the elite or e2. Perfect for whole house applications where a 200 ampere service is installed. Split core design easily fits around wire sizes up to #4/0 AWG without breaking connections.



Part# EF012

### Hub Online Accessory Kit

Monitor your home energy use online in real-time engage hub accessory kit. Online platform FREE of charge with no subscription or monthly fees Access your energy data anytime, from anywhere



Part# EFH01

# E-MAX ENERGY MONITOR



Part# EF005

Introducing the E-Max energy monitor from Efergy! This improved energy monitor features a stylish, large 7.9" display and improved battery life. View your energy data in real time with the easy to understand display and energy use speedometer. The E-Max also includes a USB-2.0 port to download your energy consumption data. Kit Includes: E-Max Display, (2) CT Sensors and the Transmitter

## FEATURES:

- See your current energy use with a color-coded speedometer
- Look up historic data: yesterday, last week, last month, etc.
- Input your higher kW rate period to make sure you are not using high energy appliances, etc. at peak times
- Portable unit allows you to walk around the house to monitor usage
- Sleek free-standing stand or wall mounted display
- Download your energy data using a USB stick

# THE TOP HAT

Part# TC1400  
\*Packaged in 50 & 5 packs



As a simple box cover, the Top Hat is used instead of a blank cover with several important advantages. It allows installers to leave wires that enter the junction boxes extending straight. With the depth of the Top Hat there is no need to coil wires and stuff them into the smaller parts of the junction box. This will save time during installation and more importantly during troubleshooting. Additionally, this high volume cover makes it easier to access the contents of any junction box.

Now Available For  
special order in  
multiple colors for  
various  
applications.  
Contact  
Rack-A-Tiers for  
more details.



See it in Action!



## FEATURES

- ULC Approved
- Adds 35.8 cubic inches to the existing junction box
- Plenum Rated
- \*Patent Pending



BEFORE



AFTER



# Rack-A-Tiers

## COMPLETE LINE OF Driver Bits



PART#	DESCRIPTION	LENGTH	PART#	DESCRIPTION	LENGTH
70226BR	Impact Bit, Double-Ended, Phillips #2 & Robertson #2 (Blue/Red)	6"	70430P	Square #4	3"
70224BR	Impact Bit, Double-Ended, Phillips #2 & Robertson #2 (Blue/Red)	4"	70360BK	Robertson Square #3 (Black)	6"
70216RG	Impact Bit, Double-Ended, Robertson #2 & #1 (Red/Green)	6"	70340BK	Robertson Square #3 (Black)	4"
70214RG	Impact Bit, Double-Ended, Robertson #2 & #1 (Red/Green)	4"	70260R	Robertson Square #2 (Red)	6"
7032RI	Robertson Impact Bit, Square #3 (Black)	2"	70240R	Robertson Square #2 (Red)	4"
7031RI	Robertson Impact Bit, Square #3 (Black)	1"	70230R	Robertson Square #2 (Red)	3"
70266R	Robertson Impact Bit, Robertson #2 (Red)	6"	70220R	Robertson Square #2 (Red)	2"
70244R	Robertson Impact Bit, Robertson #2 (Red)	4"	70160G	Robertson Square #1 (Green)	6"
7022RI	Robertson Impact Bit, Square #2 (Red)	2"	70140G	Robertson Square #1 (Green)	4"
7021RI	Robertson Impact Bit, Square #2 (Red)	1"	70130G	Robertson Square #1 (Green)	3"
70166R	Robertson Impact Bit, Robertson #1 (Green)	6"	70120G	Robertson Square #1 (Green)	2"
70144R	Robertson Impact Bit, Robertson #1 (Green)	4"	70040Y	Square #0 (Yellow)	4"
7012RI	Robertson Impact Bit, Square #1 (Green)	2"	70030Y	Robertson Square #0 (Yellow)	3"
7011RI	Robertson Impact Bit, Square #1 (Green)	1"	70261BL	Phillips #2 (Blue)	6"
70266B	Impact Bit, Phillips #2 (Blue)	6"	70241BL	Phillips #2 (Blue)	4"
70244B	Impact Bit, Phillips #2 (Blue)	4"	70141LB	Phillips #1 (Light Blue)	4"
70166B	Impact Bit, Phillips #1 (Light Blue)	6"	72126GR	Drive Bit, Double-Ended, Square #1 & #2 (Red/Green)	6"
70144B	Impact Bit, Phillips #1 (Light Blue)	4"	72124GR	Drive Bit, Double-Ended, Square #1 & #2 (Red/Green)	4"
7022PI	Impact Bit, Phillips #2	2"	72204BY	Double-Ended, Phillips #2 & 1/4" Slot Bit (Blue/Yellow)	4"
7021PI	Impact Bit, Phillips #2	1"	72133P	LockHard, Square #1 With Wings	3"
7012PI	Impact Bit, Phillips #1	2"			
7011PI	Impact Bit, Phillips #1	1"			



# Racky Bits Counter Display

Contact us to get a counter display for your Racky Bits. These compact displays are available in two sizes to best suit your needs. Both displays include an anti-theft lid.

12 Slot: Part# 70SKE12

24 Slot: Part# 70SKE24



PART#	DESCRIPTION	LENGTH
70961BK	Hex 1/2" (Black)	6"
70931BK	Hex 1/2" (Black)	2.5"
70861BR	Hex 7/16" (Brown)	6"
70831BR	Hex 7/16" (Brown)	2.5"
70761BL	Hex 3/8" (Blue)	6"
70731BL	Hex 3/8" (Blue)	2.5"
70661Y	Hex 5/16" (Yellow)	6"
70631Y	Hex 5/16" (Yellow)	2.5"
70561R	Hex 1/4" (Red)	6"
70531R	Hex 1/4" (Red)	2.5"
70466RY	Malco Dual-Sided Magnetic Driver, Hex 1/4" & 5/16"	6"
70464RY	Malco Dual-Sided Magnetic Driver, Hex 1/4" & 5/16"	4"
70462RY	Malco Dual-Sided Magnetic Driver, Hex 1/4" & 5/16"	2"
72564RY	Double-Ended, Hex 1/4" & 5/16" (Red/Yellow)	4"

PART#	DESCRIPTION
72000	Magnetic Bit Holder
72030	Wood Lag Driver Bit
72022	Magnetic Sleeve

## IMPACT DRIVER SOCKET ADAPTOR SET



PART#	DESCRIPTION	LEN.
70325	1/4", 3/8", 1/2"	2.5"

## ALLEN HEAD DRIVER BIT KIT

These high quality hex key allen bits are 6" long for increased versatility. Also included in the kit is a 3/8" socket adapter.

The 1/4" shank allows you to use any standard drill or quick change chuck.



PART#	DESCRIPTION
72600	Allen Head Driver Bit Kit



FOLLOW US



RACK-A-TIERS.COM

SALES@RACK-A-TIERS.COM

TOLL FREE: 1 (888) 939-9991



# MALCO

Part#  
70462RY - 2" Red/Yellow  
70464RY - 4" Red/Yellow  
70466RY - 6" Red/Yellow  
70482YB - 2" Blue/Yellow  
70484YB - 4" Blue/Yellow  
70486YB - 6" Blue/Yellow

## DUAL-SIDED MAGNETIC HEX DRIVERS



Quickly change between 1/4in. and 5/16in. hex sizes with Malco's unique, exclusive, dual-sided magnetic hex drivers. The reversible hex socket fits over a 1/4-inch magnet-tipped, ball locking hex shaft, and can be quickly reversed to change sizes. Eliminate troublesome buildup of metal shavings in the hex tip with the "Easy Clean Magnet". Just swipe with a glove or shop towel to clear any metal shavings. Tested torque of the reversible hex chuck driver design is equal to one-piece drivers.



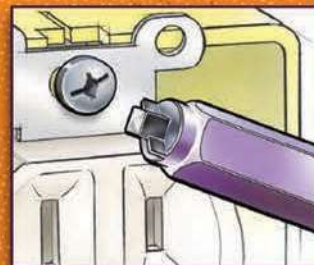
## lockHARD bit

The lockHard bit has two strategically placed wings on the sides of its square bit end. This allows it to lock into place and makes sure you NEVER strip another screw

PART#

72133P - 3" BULK BIT

72133PP1 - 3" PACKAGED BIT



## HOLDSABIT

Every moment during a project that you spend looking for the right tool is wasted time and results in frustration and bad decisions. The ingenious HOLDSaBIT slips on or off a drill in seconds. Simply pull one loop over the front of the drill and pull the second loop to the back of the drill. The HOLDSaBIT will hold any 1/4" hex shank item as well as pencils, nut drivers and hex shank drill bits. Tips and bits are easily inserted and removed.

### FEATURES:

- Sold in a kit with bits or sold separately.
- Hold any 1/4" hex shank items as well as pencils, drill bits, etc.
- 4 channels to fit a variety of length bits

Part# 70000 (Bits Not Included)

Part# 700.kit (includes 1-70140G, 1-70240R, 1-70241BL, 1-70531R, 1-70631Y & 1-72133P)



## Reemer Bit

Double-Ended #2 Phillips & #2 Robertson Pipe Reaming Bit

- Reams all sizes of conduit
- Tighten your connectors and coupling
- Fits Power Drill chucks and quick release

SHARP ENOUGH EDGES TO  
DO THE REAMING BUT WON'T  
CUT UP YOUR FINGERS!



Part# 72422RB



FOLLOW US



RACK-A-TIERS.COM

SALES@RACK-A-TIERS.COM

TOLL FREE: 1 (888) 939-9991



# EXTENDO NUT DRIVER



The Extendo Nut Driver kit is designed to adapt a standard 1/2" conduit into an extension nut driver for threaded rod. Utilizing the concept of a hollow shank nut driver, the Extendo Nut Driver gives you the flexibility to cut the conduit any length you need to drive the nut up the full length of threaded rod. With this tool on hand, you no longer need to buy multiple size hollow shank nut drivers! Save yourself time and money with this complete extension nut driver kit.

Part# NT1050

- Kit includes: 7/16", 9/16" sockets, and 1/4" adaptor
- No need to buy multiple hollow shank nut drivers
- Drill attachment designed for 3/8" chuck, will fit quick change drills

- Made from hardened steel
- Adaptable to any length nut driver needed
- Extends up to 10'



## PICQUIC



**SIXPAC *plus***  
- 7 - 3" LENGTH, 1/4" HEX POWERBITS  
- 11.5" TOTAL LENGTH  
PART# P88001



## Robertson



**GREEN ROBBY**  
#5-6-7 SQUARE DRIVE  
PART# SD110G



**DASH 7**  
- 7 - 2" LENGTH, 1/4" HEX POWERBITS  
- COMES IN 4 BRIGHT NEW COLORS  
PART# P05001



**RED ROBBY**  
#8-9-10 SQUARE DRIVE  
PART# SD210R



**STUBBY**  
- SOLID, COMFORTABLE, HIGH TORQUE HANDLE  
- 6 HIGH QUALITY 1.3" LENGTH INSERT BITS  
- IDEAL FOR WORK IN CLOSE QUARTERS  
PART# P91000



**BLACK ROBBY**  
#12-13-14 SQUARE DRIVE  
PART# SD310BK

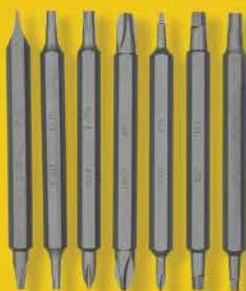


## DEMAGNETIZER

MAGNETIZES OR DEMAGNETIZES DRIVER BITS,  
TOOLS AND SMALL STEEL PARTS INSTANTLY!  
Part# 70988

## MAGNETIC BIT HOLDER

QUICK CHANGE MAGNETIC BIT HOLDER  
PART# 72000



## ROLGEAR

**MULTIBIT RATCHET SCREWDRIVER / 15 TIPS (DOUBLE ENDED BITS)**

- Smooth and silent ratcheting
- Single-handed ratchet adjustments from forward, locked, & backward
- Ergonomic, cushion comfort handle
- Magnetic components for drop-safe bit changing
- Stainless steel bit adapter

- Slotted: 3/16", 1/4"
- Square: 1, 2, 3, 4
- Phillips: 1, 2, 3, 4
- Torx: 10, 15, 20, 25

PART# SDR14





# ROBERTSON SCREWS

The Original Robertson screw  
is the only one that guarantees  
a perfect "Cling Fit"

**PLEASE  
CALL FOR PART  
NUMBERS**



## ANCHORS, WASHERS, NUTS & BOLTS

FLAT HEAD  
WOOD SCREWS



PAN HEAD  
SHEET METAL SCREWS



ROUND HEAD  
MACHINE SCREWS



CAMTAP®  
SELF-DRILLING SCREWS



TRUSS HEAD SCREWS



USE THEM WITH  
OUR ROBERTSON  
DRIVER BITS.



NEVER DROP A  
SCREW AGAIN!

SPECIALTY ELECTRICAL TOOLS  
**RACK-A-TIERS**  
EST. 1995  
• For Electricians • By Electricians •

**ASK YOUR WHOLESALE TO BRING IN ROBERTSON SCREWS FROM RACK-A-TIERS!**



# ATTENTION ALL WHOLESALERS!

SPRUCE UP YOUR SHOWROOM WITH A GREAT LOOKING DISPLAY FROM **RACK-A-TIERS**

\*Tools Not Included



24" x 48" Paper wall panels  
Part# WALLPAPER-BK  
(24"x 48")



Pouch Display  
Part# MINI-DISPLAY-C



Metal Floor Display  
Part# METAL-FLOOR-DISPLAY

## TAKE A LOOK AT WHAT'S ON THE WAY!

### LADDER SAVER

See website for  
part numbers.

The Ladder Saver is a simple cover that will extend the life of your ladder and at the same time keep your work area clean and tidy. Tired of UV rays damaging your ladder? The Ladder Saver will protect it.

Customers giving you dirty looks for dragging in mud and snow on your ladder? The Ladder Saver will fix that. The Ladder Saver will be available in 6, 8 and 10 foot sizes. We will also be able to provide custom company branding on the Ladder Saver!



These products are made to order.  
Call 1 (888) 939-9991 for more details

## DAYTONA RACK

### FEATURES:

- Sporty looking rear load rack
- Easily removable for access to bed
- Works with tri-fold tonneau covers
- Allows you to open tailgate and tonneau cover
- Gives a straight, flat load surface instead of tying to a curved tailgate



See Web Site For Part Numbers



# INVENTOR'S CORNER

FIND YOURSELF FLIPPING THROUGH THE RACK-A-TIERS CATALOG WISHING YOU HAD THOUGHT OF THAT TOOL, OR FRUSTRATED THAT YOU THOUGHT OF THAT IDEA FIRST?



Well, here's your chance to put your ideas into action. Rack-A-Tiers launched Inventor's Corner for creative folks like you to pitch ideas and read testimonials from past inventors. Even if Rack-A-Tiers is unable to add your idea to our product line, we have the experience and knowledge to provide advice for your next move as an inventor. Check out the Inventor's Corner at [RACK-A-TIERS.COM/INVENTORS](http://RACK-A-TIERS.COM/INVENTORS) and who knows maybe in next year's catalog your product could have a full-page spread.

**RACK-A-TIERS.COM/INVENTORS**

**RACK-A-TIERS CURRENTLY PAYS OUT ROYALTIES TO OVER 30 INVENTORS. ARE YOU NEXT?**

## NEED A SPECIFIC PRODUCT? WE'LL HELP YOU FIND IT

RACK-A-TIERS HAS OVER 25 YEARS OF EXPERIENCE IN THE ELECTRICAL MANUFACTURING INDUSTRY AND IF WE DON'T HAVE WHAT YOU ARE LOOKING FOR **WE WILL FIND IT FOR**

**TEXT: 888-939-9991 OR EMAIL: [SALES@RACK-A-TIERS.COM](mailto:SALES@RACK-A-TIERS.COM)**

EZ-ROLL... BIG EZ...  
X-DISPENSER... RACK-A-TIERS..  
TUG WISE... DONUT DISPENSER..  
PIE WINDER.. PIZZA SPINNER

**SEARCH  
DEPARTMENT**



**FOLLOW US**

@RACKATIERSTOOLS

@RACKATIERS

@RACKATIERS

@RACKATIERS

**WHAT'S WITH  
THE NEW LOOK?**

**DIDN'T YOU HEAR?  
I'M A SOCIAL MEDIA  
INFLUENCER NOW.**



**NEW TOOLS**  
 **TOOL TALK**

**WEEKLY GIVEAWAYS**  
 **CONTESTS & MORE**

**| [SALES@RACK-A-TIERS.COM](mailto:SALES@RACK-A-TIERS.COM) | TOLL FREE: 1.888.939.9991 |**