

DISTRACTING ELECTRICIANS WITH CARTOONS SINCE '95

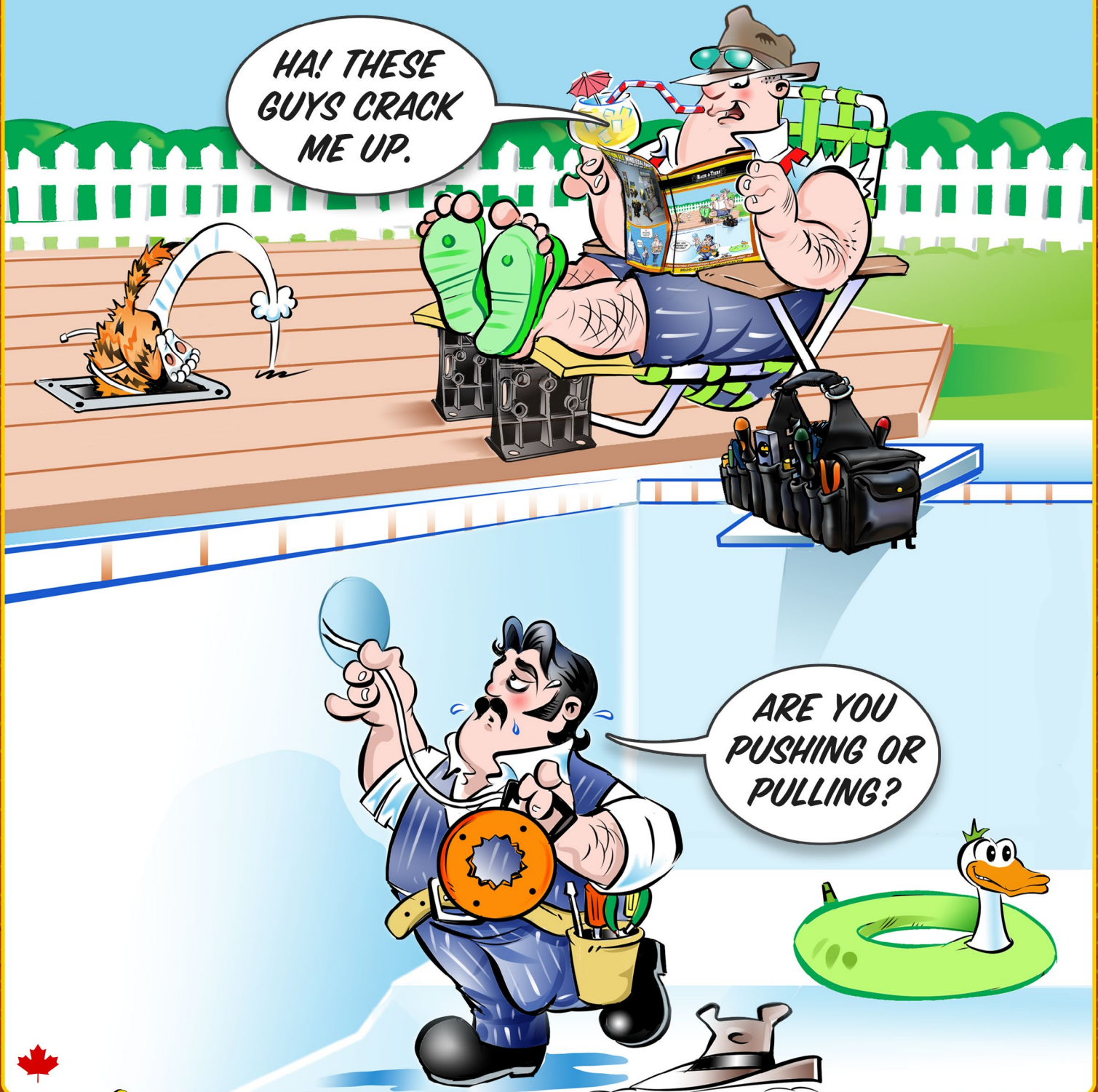


TABLE OF CONTENTS

Page	Description	Page	Description	Page	Description
5	4Reel Bracket	14	Flush Pin Shackle	25	Quattro Flex Auger Bits
32	6.5 Blank Plate	24	Fusion Fish Tape	2	Rack-A-Tiers
42	AC Sensor	40	GPS LightLock	57-58	Racky Driver Bits
42	AC Splitter	46	Ground Pounder	49	RAT500 & RAT750
43	Aerial Tool Bin	25	Guide Tool	7	Reel Mac & Spindles
50	Aircraft Cable & Wire Crimps	27	Guide-O, The	59	Reemer Bit
15	All-American Pull Buddies	50	H2 Homer Helper	61	Robertson Fasteners
58	Allen Head Driver Bit Kit	41	Head Light	60	Robertson Screwdrivers
26	Auger - Standard & Tri-Cut	12	Heat Tank	60	Rolgear Screwdriver
26	Auger Bit File	25	High Speed Steel Flex Bits	17	Ropematic Pro
14	Bag Pipers	59	Holdsabit	39	Rough-In Stick, The
41	Bat Flashlight	30	Hole-In-One - Hole Cutters	28	Round Multi-Tool Hole Cutter
10	Bend-All	3	Hooker - Wrench Adaptor	29	Sharp Pog
4	Big E-Z	11	Hoppy Bender, The	50	Shim My Box
38	Booty Pack	58	Impact Driver Kit	53	Sidewinders
36	Boulder Bag	25	Javelin	41	Silver Bullet, The
18	Breaker Lok	18	Jet Level	46	Sluggo-Ox
10	Bulldog Benders, The	13	Jimbo, The	8	Smart Load 500
26	Bumper Balls	38	Knee Pads	37	Snap Sack
37	Butt Pouches	49	KO Killers	16	Snatch Strap
7	Cable Caddy & Cable Truck	43	Ladder Mate	18	Solder M8
7	Cable Cart & Cable Cart Data	62	Ladder Saver	6	Spool Mac
50	Cable Chase	33	Laser Plumb Bob	43	Staple Shark
54	Cable Clear	34	Laserline	43	StepDek
48	Cable Mounts	15	LB Wire Guide	41	Stick Bug
8	Cable Reel Rollers	49	Level Jacks	3	Stick, The
6	Caddy Mac #1 & 2	13	Locknut Wrench, The	15	Sting Ray
27	Carbide Tipped Steel Cutters	47	Mag Daddy	59	Strutter, The
26	Carbide Tipped Wood Hole Saw Kit	34	Magnepull	11	Stubbees
48	Chase Strap	34	Magnespot	39	Stud Ball
31	Chip Catcher	60	Magnetic Bit Holder	49	Stud Buddies Connectors
56	Circuit IQ	60	Magnetizer / Demagnetizer	35	Support Belt
46	Clip Whacker	41	Magpie	35	Suspenders
35	Combo Tool Belt & Pouches	59	Malco Dual Sided Hex Driver	25	Switch Bits
27	Co-Pilot	19	Mark My Wire	24	Telescopic Rods
28	Copper Washer	27	Multi-Bit Step Drills	54	Temp-It
9	Copper Wire Strippers	59	NoDrop Tools	53	Temporary Cable Guard
44	Croc's Needle Nose Wire Strippers & Jr.	45	Nut Blaster XL and XXL	17	The Puck
50	Crow's Feet	13	Nut Snugger	45	Tie Lips
31	Dirt Bag	26	OverDrive Bits	49	Tom Two-Way Connector
30	Driller's Dust Bowl and Pro	45	Panel Buddy Knockout Kit	35	Tool Carriers
32	Drywall Trapper	14	Penguin Puller Sr & Jr, The	56	Top Hat Cover
42	Dual Check Non Contact Voltage Tester	22	Phase It Right	40	Tracer Wizard
55	Efergy Products	60	Picquic Screwdrivers	32	Tree Hugger
53	Elasco Products	39	Pipe Spinner	18	Trunktie
29	Electrician's Kit Blades	12	Pipe Vipers	5	Tug Wise Standard
55	E-Max Energy Monitor	23	Plastic Coated Fiberfish	42	Ultimate AC Sensor
38	Exploding Garbage Can	23	Plastic Coated Glowfish	19	U-Phase Wire Marker
60	Extendo Nut Driver	42	Plug Master	47	Van Magnets
4	E-Z Roll & E-Z Roll Multi	33	Poke-E	44	V-Cutter
21-22	Ferret, The	24	Polyester Fish Tape & Cases	48	Winnie Magnets
23	Fibersnakes 3/16", 1/4", 1/2", 5/16"	51-52	Pop-up Receptacles	5	Wire Spool Hand Cart
41	Fire Fly	36	ProJob Pants & Shorts	3	Wire Tub
16	Fish Heads	54	ProLock	15	Wire Vortex
16	Flex Flyers	28	Q-Bit Drywall Hole Cutter	3	X-Dispenser
14	Flex Puller				

MADE IN CANADA  MADE IN USA 



FOLLOW US ON    

WWW.RACK-A-TIERS.COM

SALES@RACK-A-TIERS.COM

TOLL FREE: 1 (888) 939-9991

The Invention That Started It All:

RACK-A-TIERS

ALL-IN-ONE MULTI-USE WIRE DISPENSER

The Rack-A-Tiers Wire Dispenser is the one tool that DOES IT ALL. It's no surprise that we've sold hundreds of thousands of them to electricians everywhere. This genius invention is most commonly used for dispensing wire from spools of various sizes. See for yourself its many other uses!



Part# 11455

INTERLOCKING PAIRS! VERSATILE! WATERPROOF!



RUSTPROOF! RELIABLE! RUGGED! EASY TO SET UP!

"We saw another contractor with these and we loved them. You can have multiple spools mounted at a time with various sizes. We have used it for CCTV Siamese cable, speaker cable and alarm cable. They do not take up much room, lightweight and durable."

★★★★★

- Fred

"Simple but effective. It's funny how this simple plastic mold is so useful. It's great. On the package it even mentions other uses I never considered!"

★★★★★

- Lamont

"These were purchased to use for overhead crane service. They have exceeded our expectations"

★★★★★

- Mike

"Where has this been all my life?"

★★★★★

- Noyotas

"Smart design. It's strong, easy to carry, easy to use and very versatile for a reasonable price"

★★★★★

Badbedbug74

"Can fit many application needs like fiber optics cable transfer from one reel to another."

★★★★★

- Frank

"What a great help the cable organizer is. Made my job faster and neater. Thanks again"

★★★★★

- E.D

ONE SIZE RACK-A-TIERS FITS ALL - UP TO: 34" / 0.9M • 330 LBS / 150 KG WIRE REELS

THE X-DISPENSER

FOLDING WIRE CADDY

FEATURES:

- Folds to 1" wide to easily fit in your van
- Easy to carry: 1" x 23"
- Holds up to six reels of wire

Maximum spool quantity: 6 reels
500' of #10 AWG wire
Maximum spool diameter: 8"
Max spool width: 9"

Part# 11655

THE STICK

STUD MOUNTED WIRE DISPENSER

The Stick installs quickly & easily to any standard stud. Its compact design allows for easy storage once the job is complete.

FEATURES:

Weight capacity: 200 lbs
Maximum 15" reel width

Part# 11555

WIRE TUB

Part# 18455

The Wire Tub allows you to easily dispense and rewind wire. Don't waste a single foot of wire -- rewind it in the Wire Tub and get ready for installation!

FEATURES:

- 360 degree feed adjusts automatically for easy dispensing
- 3-way adjustable center hub
- Removable top plate has a handle for rewinding wire!
- Large 24" diameter capacity
- Inner tray spins

Hooker

PIPE WRENCH ADAPTER

Part# 10455

The Hooker Pipe Wrench Adaptor lets you turn your Rack-A-Tiers Wire Dispensers into a pipe vise.

FEATURES:

- Light weight
- Easy to use
- Fast implementation
- Inexpensive
- To be used with an 18" rigid pipe wrench



EZ ROLL

FEATURES:

- 150 lbs load tested
- Rigid steel construction
- Light-weight design
- Compact (fits in any job box)
- Holds reels up to 24"
- Replacement wheels available

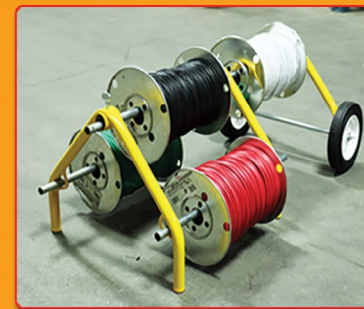


Part# 55455

The E-Z Roll Wire Rack is the ultra compact and collapsible wheeled wire dispenser. When you're ready to pull wire, wheel the E-Z Roll into position and dispense wire directly from your pipe bender or 1" EMT.

EZ Roll MULTI

GET THE MOST OUT OF YOUR EZ-ROLL WIRE RACK WITH THE NEW EZ-ROLL MULTI. THIS HANDY ADD-ON EXTENDS THE EZ-ROLL'S USE BY ALLOWING MORE WIRE SPOOLS TO BE ADDED, GIVING IT EVEN MORE FUNCTIONALITY & CAPACITY.

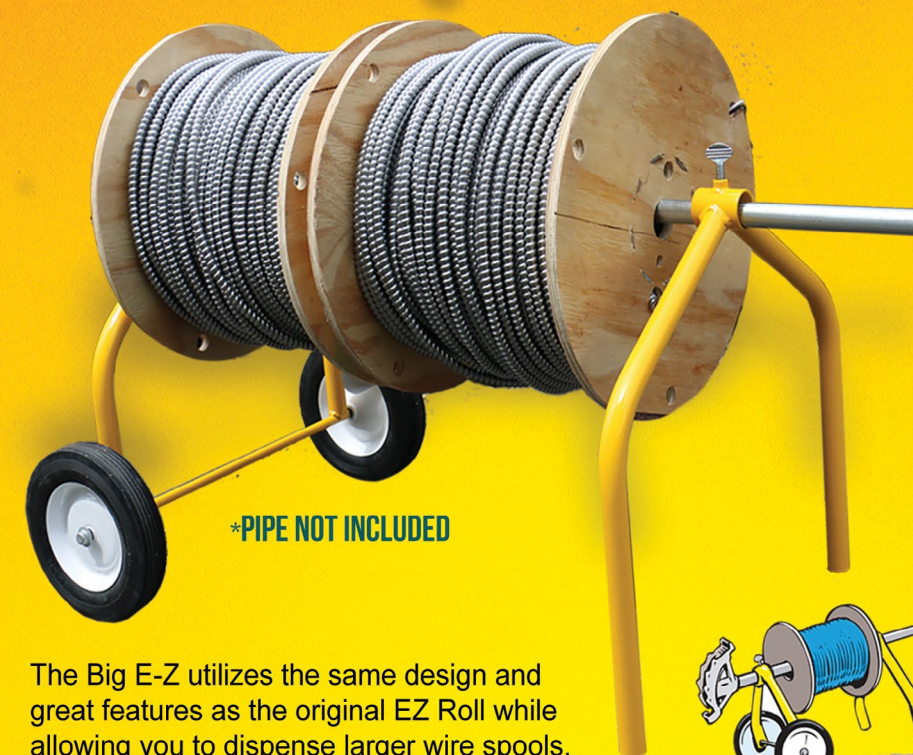


PART# 55456

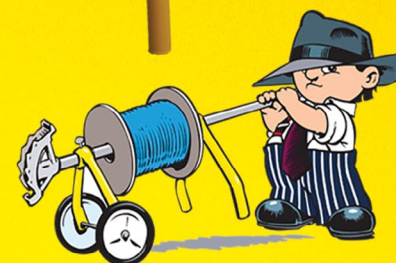
BIG EZ

FEATURES:

- 300 lbs load tested
- Rigid steel construction
- Light-weight design
- Compact (fits in any job box)
- Holds up to 32"



The Big E-Z utilizes the same design and great features as the original EZ Roll while allowing you to dispense larger wire spools.



Part# 55632

THREE EASY STEPS! 1. SCREW TO BASE OF REEL 2. FLIP OVER REEL 3. PULL WIRE!

TUG WISE

STANDARD MODEL (15" x 15")

- 4 screw holes for easy attachment
- Works with wooden and plastic reels
- Standard model can handle up to 1000 lbs

Part# 11931

TUG WISE

DELUXE MODEL (21.5" X 21.5")

- 4 screw holes for easy attachment
- Works with wooden and plastic reels
- Can handle up to 2000 lbs
- Made of 3/8" thick aluminum alloy and built to handle anything

Part# 11932

4 REEL BRACKETS

The 4Reel Brackets clamp on to a standard 2x4 wood stud and are capable of holding multiple 1,000' NMD reels. Reduce your installation time with these tough, high quality dispensing brackets.

SEE IT IN ACTION HERE!

Part# 11560

FEATURES:

- Made for a maximum of 4 – 1000' NMD reels or weight equivalent.
- Clip together for compact, easy storage.
- Made from galvanized steel.
- To be used on 2x4 wood studs only. Not meant for steel studs.
- Do not install higher than 20".
- 1" IMC or Rigid is recommended with heavier loads.
- Mounting pins provided.
- 700 lbs

New Product!

Part# 11700

WIRE SPOOL HAND CART

- Finish: Yellow powder coated
- Dispenses (8) 5" Wide Reels or (4) 6 to 10" Wide Reels, up to 7" Dia.
- 80 LB capacity
- Height 20"
- Width 15"
- Length 26"
- Number of Spindles 4
- Material: Steel

CADDY MAC 2

Part# 11902

Caddy Mac #2 holds 16 spools of #10 awg or 24 spools of #12 awg. Hinge design allows easy access to all spools for wire dispensing and folds for compact storage.

Spindles swing out to set position for convenient loading of wire spools.

Inner spindles store in special loops which can hold four pieces and will not fall out during transportation.

Number of Spools	Max Spool Dia	Load Capacity	Weight	Width	Additional Features
16-#10 awg. or 24-#12 awg.	7.5 in 19 cm	400 lbs 180 Kg.	72 lb. 33 kg.	26 in 66 cm	Folds up for compact storage.

SPOOL MAC

Part# 11900

*Ships via freight

FEATURES:

- All steel frame construction
- 10" wheels
- Easy set-up for cable dispensing
- No loose pieces
- Compact storage
- Fits through 32" (81 cm) doorways
- 350 lb (160 kg) load capacity
- Priced right – built to last

Max Reel Width	Max Spool Dia	Reel Capacity	Weight	Width	Additional Features
25 in 63.5 cm	40 in 101 cm	350 lbs 160 kg	76 lb. 35 kg.	31.5 in 80 cm	All steel frame, easy set-up for cable dispensing. Compact storage. Ship weight: 150 lbs

CADDY MAC 1

Part# 11901

Caddy Mac #1 transports spools on spindles and works as a dolly! Wire is dispensed while laying flat.

1/2" solid spindles are attached to cart, no loose pieces. Spindles lock in place, even during transportation.

Spindles swing out to set position for convenient loading of wire spools.

Number of Spools	Max Spool Dia	Load Capacity	Weight	Width	Additional Features
8-#10 awg. or 12-#12 awg.	7.5 in 19 cm	200 lbs 90 kg	72 lb. 33 kg.	26 in 66 cm	Transports spools on spindles and works as a dolly. Wire is dispensed while laying flat.

REEL MAC THE REAL JACK



REEL MAC 60

Screw type telescoping reel jack for 26 to 56" diameter reels.

REEL MAC 70

Screw type telescoping reel jack for 46 to 96" diameter reels.

REEL MAC 80

Heavy duty ratchet drive reel jack for reels up to 90" in diameter. Convenient, detachable ratchet handle stores in base when not in use.

Mfg. Note: Reel Macs sold as singles, buy 2 for a set.



Reel Mac 60
Part# 11860



Reel Mac 70
Part# 11870



Reel Mac 80
Part# 11880

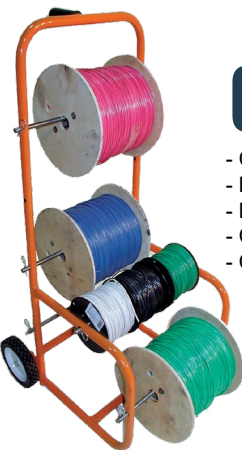
REEL MAC SPINDLES

Used with Reel Mac reel jacks. (Sold separately)



REEL MAC & JACK-A-TIER				
Description	Part #	Reel Diameter	Capacity	Weight
Reel Mac #60	11860	26-56"	2500lb	27lbs
Reel Mac #70	11870	46-96"	2500lb	46lbs
Reel Mac #80	11880	up to 90"	3750lb	99lbs

Corresponding SPINDLES				
Description	Part #	Dimensions	Capacity	Weight
#61	11861	2 3/8" x 62"	5000lb	39lbs
#71	11871	2 3/8" x 76"	5000lb	47lbs
#81	11881	3 1/2" x 100"	7500lb	119lbs



Part# CC1200 - Cable Caddy

CABLE TRUCK & CABLE CADDY



- Constructed of rugged 1" steel tubing.
- Both are 43" tall with 7" rubber wheels.
- Both can accommodate spools up to 16" wide on solid steel 1/2" axles.
- Cable Caddy features 6 axle positions for unlimited versatility.
- Cable Truck has 4 axle positions and a solid steel plate for transporting material.



Part# CT1100 - Cable Truck

CABLE CARTS



Part# CC2000 - Cable Cart



- Comes with interchangeable 1" and 3/4" axles.
- Holds up to 30 spools of THHN.

- Vertical racks swing forward for easy loading
- Space for plywood work table on top

Dimensions: 40W x 48L x 48H / Shipping weight: 185 lbs



FOLLOW US ON



WWW.RACK-A-TIERS.COM

SALES@RACK-A-TIERS.COM

TOLL FREE: 1 (888) 939-9991

CABLE REEL ROLLERS



CABLE REEL ROLLERS ARE USED FOR ROLLING LARGE CABLE SPOOLS, FOR PAYOUT, UNWINDING AND TAKE-UP OF HEAVY CABLE. FOR PURCHASING OR RENTING THESE CABLE ROLLERS OR BUILT TO YOUR SPECIFICATIONS CALL RACK-A-TIERS.COM



FEATURES & BENEFITS

Variable speed drive for rotational speed adjustability; input power supply to custom needs

Anti-tipping safety catch (Optional)

Adjustable reel alignment guides

Slip clutch for gearbox and over-torque protection

Quick adjust carriage for diameter settings

Leveling Feet (Optional)

Top quality motor/gear train, heavy duty frame



Part# 2010T



Part# 2015T



Part# 2040T

SPECIFICATIONS

	2010T 10 Ton Cable Reel Roller	2015T 15 Ton Cable Reel Roller	2040T 40 Ton Cable Reel Roller
Load Capacity:	20,000 lbs	30,000 lbs	80,000 lbs
Spool Size Range:	2-8 ft diameter 5 ft-3 in max width	2-12 ft diameter 8 ft max width	5-16 ft diameter 10 ft max width
Tractive Effort/Torque:	2,150 lbs	3,000 lbs	8,500 lbs
Rotation Speed:	30-780 in/min	48-480 in/min	48-480 in/min
Height Range:	Low Profile, fine adjust leveling feet optional	Low Profile, fine adjust leveling feet optional	Low Profile, fine adjust leveling feet optional
Power Requirements:	240V, 1-ph*	240V, 1-ph*	480V, 3-ph*
Equipment Mass:	2,200 lbs	3,015 lbs	6,700 lbs
Footprint:	79" x 95" x 29"	99" x 134" x 22"	102" x 156" x 43"

* 208 - 600V, 50 or 60 Hz input power options available. Specifications subject to change; consult factory for all specifications.



SMART LOAD 500



The Smart Load 500 is an easy to use, portable wire dispensing cart. This versatile cart offers dispensing options for a variety of spool sizes. The dispensing bars even fold up for easy storage. This patented design will surely save you time and effort on the job site, in the warehouse or wherever you need it!

- Spool Capacity: 24 - #12 or 14 500' THHN
- 15 - #10 500' THHN
- Max Weight Capacity: 350 lbs.

Part# 11905
Patent # US10676310B2



COPPER WIRE STRIPPERS

RECOVER COPPER & ALUMINUM WIRE QUICKLY AND EASILY WITH THESE MONEY MAKING MACHINES!

COPPER WIRE STRIPPER 2

The top selling CWS-2 model weighs in at only 45lbs. This wire stripper is compact enough to easily move around, but still has the ability to strip a wide range of wire.



FEATURES:

- Strips from 14 AWG to 750 MCM (1.45" diameter)
- Strips NMSC cable 10-14 AWG
- 1/2 HP Motor
- All aluminum frame
- Hardened one piece blade
- Strips solid core or braided wire
- Blade made from tool steel
- Blade easily re-sharpened
- Fully adjustable wire guide

Part# 47200

SEE IT IN ACTION HERE!



COPPER WIRE STRIPPER 1

The CWS-1 is the largest wire stripper available from Rack-A-Tiers. Powered by a 1 HP motor and with the ability to strip up to 3" in diameter, there isn't much this wire stripper can't handle.



FEATURES:

- Strips 14 AWG to up to 3" in diameter
- Strips NMSC cable 10-14 AWG
- 1 HP motor
- All aluminum frame
- Hardened one piece blade
- Strips solid core or braided wire
- Blade made from tool steel
- Blade easily re-sharpened
- Fully adjustable wire guide
- Bench model - anti-slip base
- Made in Canada

Part# 47100

COPPER WIRE STRIPPER JR.

A low cost alternative to the CWS-2, the Copper Wire Stripper Jr. is the money making tool that you need in your warehouse. Driven by a standard power drill, you'll get more than double the money from your scrap wire. It's that simple!



FEATURES:

- Wire Range: 14 AWG - 4/0
- Strips NMSC cable 10-14 AWG
- All aluminum frame
- Single pass cuts outer jacket & one inner wire
- Hardened one piece blade
- Strips solid core or braided wire
- Blade made from tool steel
- Blade easily re-sharpened
- Fully adjustable wire guide

Part# 47030

CWS JR.
SINGLE PASS CUTS
OUTER JACKET AND
1 INNER WIRE



EASY STRIPPER

Strip the cover off your scrap wire in minutes with the Easy Stripper! Increase your earnings on every single job you complete.

FEATURES:

- Less than 10% the price of a standard motorized wire stripper
- Strips 12 to 4/0 wire
- Powered by any normal power drill
- Way easier and faster than using your knife!
- Environmentally friendly - no burning required
- For Light Use Only

Part# 47020



REPLACEMENT PARTS

CWS-1

Replacement Blade - Part# 47100B
Red Feed Guide - Part# 47100G
Replacement Pulling Wheels - Part# 47100W

CWS-2

Replacement Blade - Part# 47200B
Red Feed Guide - Part# 47200G
Replacement Pulling Wheels - Part# 47200W

EASY STRIPPER

Replacement Blade 2nd Edition - Part# 47020B2

CWS JR.

Replacement Blade - Part# 47030B
Red Feed Guide - Part# 47030G
Replacement Pulling Wheels - Part# 47030W
Replacement Shaft - Part# 47030S

WIRE BENDING MADE EASY



Part# 78600

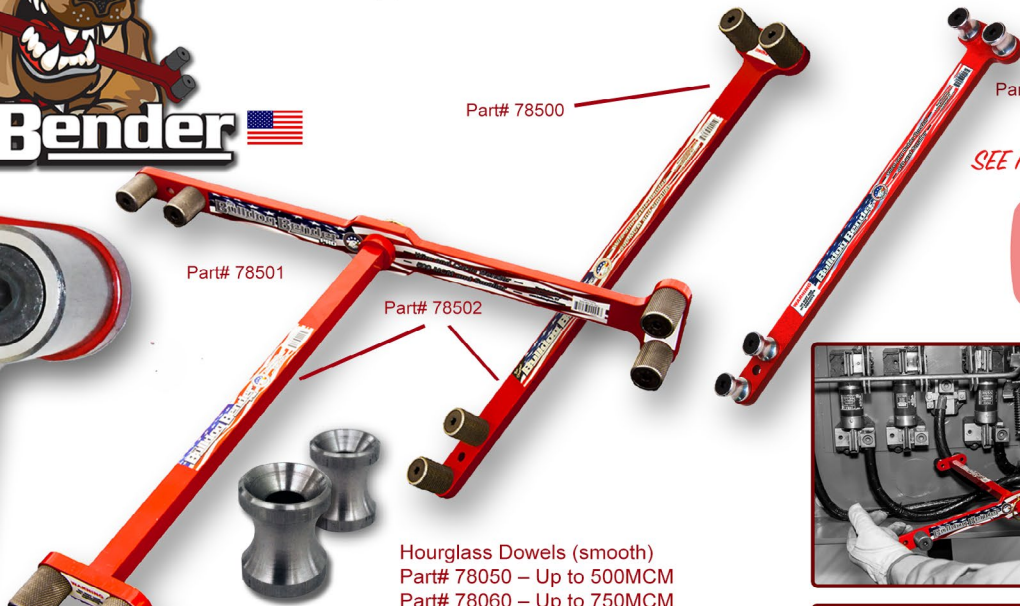
Part# 78501

Part# 78500

Part# 78502

Part# 78400

SEE IT IN ACTION HERE!



Hourglass Dowels (smooth)
Part# 78050 - Up to 500MCM
Part# 78060 - Up to 750MCM

PART #	DESCRIPTION	SIZE
78500	BULLDOG ORIGINAL	UP TO 500 MCM
78501	BULLDOG PRO WITH ADAPTOR	UP TO 500 MCM
78502	BULLDOG 3-PIECE SET (ORIGINAL + PRO)	UP TO 500 MCM
78600	BULLDOG BIG DADDY 3-PIECE SET	UP TO 750 MCM
78400	BULLDOG PUP	UP TO 4/0
78402	BULLDOG "PUP PRO" 2 PCS SET	UP TO 4/0
78403	BULLDOG "PUP" 3 PIECE SET	UP TO 4/0



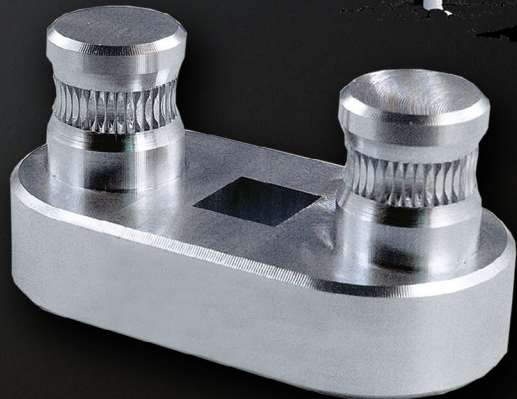
ALL BULLDOGS SHIPPED WITH KNURLED DOWELS EXCEPT THE "PUP" SERIES. SMOOTH DOWELS AVAILABLE.

Bend-All

SAVE YOUR KNUCKLES BY USING OUR BEND-ALL CABLE BENDER! MADE WITH MACHINED AIRCRAFT ALUMINUM, THIS CABLE BENDER IS EXTREMELY STRONG AND DURABLE. IT CONNECTS TO YOUR STANDARD 1/2" RATCHET, MAKING CABLE BENDING A BREEZE FOR YOU.



BENDS UP TO 500 MCM



Part# 77455





HOPPY BENDER

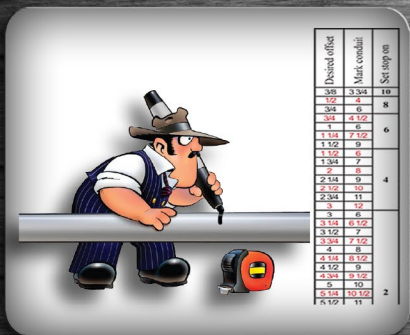
EASY AS 1,2,3!

THE HOPPY BENDER IS HANDS DOWN THE SMARTEST & MOST INNOVATIVE BENDER ON THE MARKET. WE HAVE REVOLUTIONIZED THE WAY ELECTRICIANS BEND PIPE - IT HAS NEVER BEEN EASIER OR FASTER THAN IT IS NOW WITH THE HOPPY BENDER.

SEE IT IN ACTION HERE!

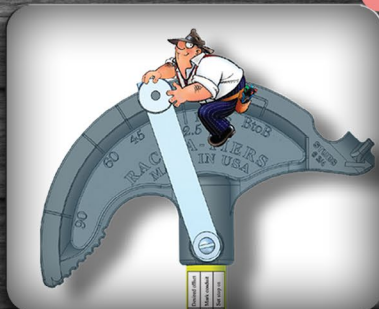
STEP ONE

READ TABLE AND MARK PIPE



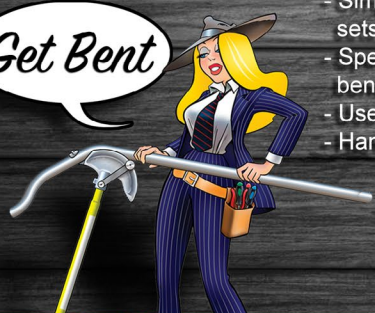
STEP TWO

SET STOP



STEP THREE

Get Bent



FEATURES:

- A "Stop" attached to the Bender head used to create exact & repeatable bends every time.
- Simplified "Multipliers" engraved into the bender for placing the "Stop" prior to making off sets & four-point saddles.
- Special 22.5 and 45 degree marks engraved into the bender for placement of conduit bend marks as well as standard degree marks for stop placement.
- Used together for bending three-point saddles without reversing the conduit in the shoe.
- Handy reference charts attached to the handle for locating bend marks.

Part#

57050 - 1/2" Hoppy Bender

57075 - 3/4" Hoppy Bender

57002 - Replacement Handle

57005 - Replacement Thumb Screw

57050LAB - 1/2" Replacement Label

57057 - 1/2" Replacement Swing-Stop

57075LAB - 3/4" Replacement Label

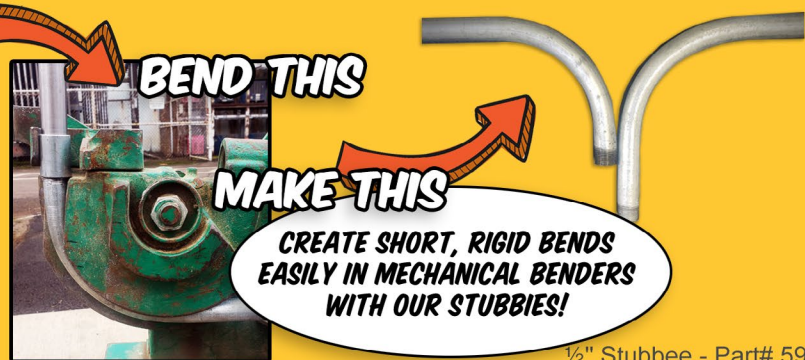
57077 - 3/4" Replacement Swing-Stop

Stubbees



THREAD THIS

NEED A BIGGER STUBBEE? CONTACT OUR SALES TEAM!



1/2" Stubbee - Part# 59250

3/4" Stubbee - Part# 59275

PIPE VIPER

COLD BEND RIGID PVC PIPE WITHOUT PIPE COLLAPSE OR FRACTURE!



HOW?

Simply insert the spring into the pipe & bend across your knee!

- No Heat Guns
- No Heat Blankets
- Fewer PVC Fittings

MFG Note:

Needs to be at least 50 degrees Fahrenheit to work effectively

PART#

- 58050 - 1/2" PVC Spring Bender
- 58075 - 3/4" PVC Spring Bender
- 58100 - 1" PVC Spring Bender
- 58125 - 1 1/4" PVC Spring Bender
- 58150 - 1 1/2" PVC Spring Bender
- 58200 - 2" PVC Spring Bender
- 58250 - 2 1/2" PVC Spring Bender
- 58300 - 3" PVC Spring Bender
- 58350 - 3 1/2" PVC Spring Bender
- 58400 - 4" PVC Spring Bender



SEE IT IN ACTION HERE!

The HEAT TANK



The Heat Tank is a simple and effective way to bend your PVC pipe. Using a standard forced air heat gun, means no expensive blanket or heat boxes are required. Simply connect your heat gun to the designated slot, insert the portion of the pipe you wish to bend and you're set!



*Heat Gun Not Included

WILL HOLD UP TO
1 1/2" PVC CONDUIT.

FEATURES:

- Prevent overheating and burning with the temperature gauge
- Saves time with hands free heating
- Eliminates the need to buy prefab 90's and couplings

Part# 59500



THE JIMBO

WIRE PULL BRACKET

A LITTLE BRACKET THAT MAKES A BIG DIFFERENCE!

The Jimbo – Wire Pull Bracket helps to eliminate cable snags and damage over sharp edges and ceiling grids. Maximize your efficiency working by yourself with a helping hand from the Jimbo.



FEATURES:

- Set up multiple brackets making a temporary cable raceway to avoid snags or catching
- Pull hard around corners and through structural steel
- Consolidate cables to the best angle for ease of pulling



Part# 40200

NUT SNUGGER

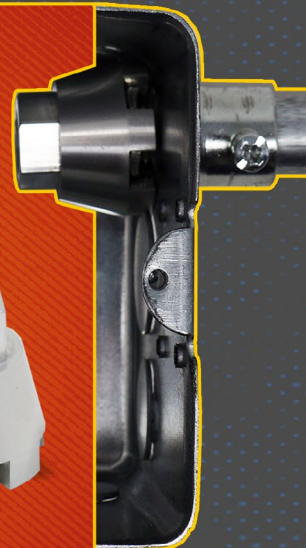


Utilizing magnets, The Nut Snugger allows you to install a connector without assistance of another worker when the location of the connector is out of reach.

FEATURES:

- Patent Pending
- Made in USA
- Can be used with adjustable wrench, tongue and groove pliers, 3/4" box wrench, and 3/8" drive ratchet.

Part#s 80075 – 3/4"
80050 – 1/2" 80090 – Kit 1/2" and 3/4"



THE LOCKNUT

WRENCH

Available Sizes:

Part# 79050 - 1/2"
Part# 79075 - 3/4"
Part# 79100 - 1"
Part# 79150 - 2 Piece Locknut Wrench Kit
(Includes 1/2" & 3/4")
Part# 79200 - 3 Piece Locknut Wrench Kit

How many locknuts have you bashed with your flat blade screw driver? The Locknut Wrench allows you to tighten locknuts quickly and works great in tight spaces. The patent pending design is available in 3 sizes.

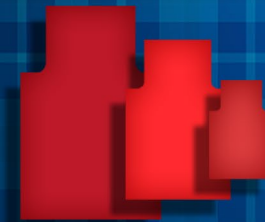
- Offset ends allow access in tight locations. Handle cut away sections are engineered to exact lock nut engagement and rotation
- Singular handle prevents wrist tension
- Clear permanent laser etched markings to ease use
- Comprised of durable steel and strong enough for any job



IT'S SIMPLE... FOAM LINE CARRIERS ARE EXPENSIVE

BAG PIPERS

ARE CHEAPER AND WORK MUCH BETTER
3 sizes available to fit conduit 1/2" up to 6"



Part#

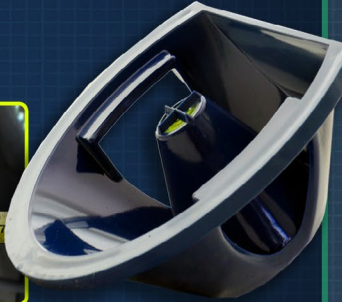
BP05.125 (sm) 1/2" x 1 1/4" - 10 pack
BP150.40 (med) 1 1/2" x 4" - 5 pack
BP20.60 (lg) 2" x 6" - 3 pack
BP05.600 (multi-pack) 1/2" x 6" - 6 pack

GD CENTER

FINDER



The GDCenter Finder is a new product that revolutionizes the installation of electrical panels and junction boxes. No need to learn a new installation process. Pull your layout just as you always have, but this time aided with the GDCenter Finder. Your center point will always be level and clearly identified. The days of "close enough" are over. Finally a center tool that works!



Part# 67500

THE PENGUIN PULLER



The Penguin Puller Sr. and Penguin Puller Jr. are revolutionary new tools designed to aid in easily pulling large cables. The sleek, bullet shape allows for seamless pulling, no tape or crimps required. Utilizing four slots and allen-key set screws, the Penguin Puller Sr. and Penguin Puller Jr. are rated for 4000 lbs. of pull strength. These tools are the cool new kids on the block and here to stay when it comes to pulling wire!

Features:

- 4000 LBS. MAX PULL STRENGTH
- Penguin Puller Sr. – 3/0 to 350 MCM Copper or Aluminum
- Penguin Puller Jr. – 2/0 to 4/0 Copper or Aluminum
- No tape, no crimps, no mess
- Reusable



Part#
69700 - Penguin Puller Sr. For Pipe 2 1/2" and Larger
69705 - Penguin Puller Jr. For Pipe 2" and Larger

FLUSH PIN

SHACKLE

- Stainless Steel
- Four Ton Break Load
- .5" Pin Size



Part# 69710

FLEX PULLER

- Flexible metal conduit pulling tool easily screws onto exterior of MC cable & provides a hook to pull cable.
- No more getting caught up in insulation or other obstacles!
- Can be used on #14, #12, & #10 MC Cable!
- Provides a hook to pull cable through hollow & insulated walls and ceilings.

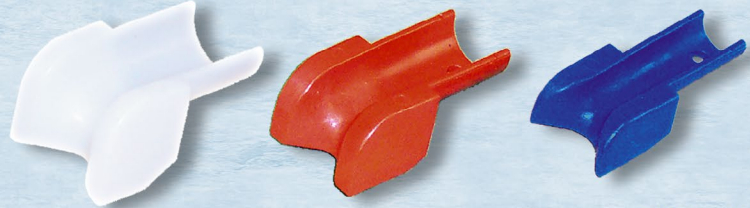


2 Pack
Part# 42620



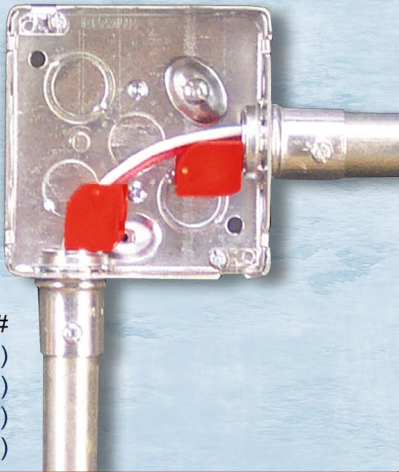
THE ALL AMERICAN PULL BUDDY

SHOEHORNS FOR YOUR WIRE 



- FEATURES:**
- Reduces Time and Labor
 - Reduces the chance of damaging wires
 - Turns wire pulling into a one person job

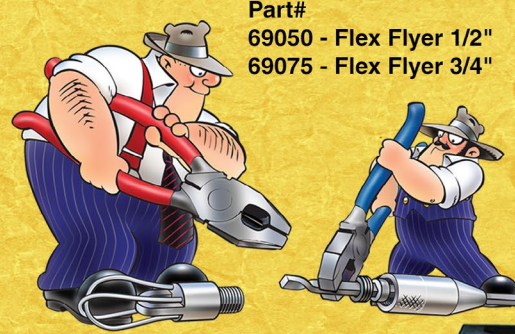
Part#
42000 - Multi-Pack (6 pack / 2 of each)
42050 - 1/2" Blue (10 Pack)
42075 - 3/4" Red (10 Pack)
42100 - 1" White (10 Pack)



FLEX FLYER

FEATURING "QUICK CHANGE SWIVEL HEAD"

- Installs in under 20 seconds using two pairs of pliers, no torch needed
- Flies through those tough conduit runs
- Loop technology allows leader to glide through flex as well as all other types of conduit
- Loops allow leader to be snagged from other end of conduit run when necessary
- Standard 1/4"-28 threads allow for the use of other types of leaders on quick change base



Part#
69050 - Flex Flyer 1/2"
69075 - Flex Flyer 3/4"



The Flex Flyer features a quick change swivel head that installs on the end of a fish tape in 20 seconds by twisting the fish tape with 2 pairs of pliers. The loop technology allows the leader to move smoothly through all types of conduit including flex. The standard 1/4" - 28 threads allow for other types of leaders to be attached to the quick change base.

LB Wire Guide

THE LB WIRE GUIDE IS A "SHOE HORN" FOR 2" LB'S.

Part# 42200

FEATURES:

- Assists while working on your own
- For PVC LB fittings and is adaptable to most metal LB's
- Fast for one person conductor installations
- Installs in two positions to fit both "Ends" of the LB

MFG NOTE

Two hundred amp services (3/0 wire) can be hard on your knuckles. The LB Wire Guide puts the wire in the pipe and leaves the skin on your fingers.



StingRay

SNAP IN PLACE & PULL YOUR WIRE

- PROTECTS EXPENSIVE AND FRAGILE CABLES
- PROTECTS CEILING FROM TWISTING AND MARRING
- PREVENTS CABLES FROM TANGLING WITH THE CEILING, SAVING TIME AND LABOR
- SMOOTH INTERIOR CREATES AN ALMOST FRICTIONLESS CHASE
- SIDE SLIT ALLOWS FOR EASY CABLE REMOVAL AT ANY TIME
- EASY TO INSTALL AND REMOVE



Part# 40400



WIRE VORTEX

If you need an extra pair of hands on the job, try the Wire Vortex. This wire pulling guide fits on 4" square boxes and saves you tons of time when pulling wire.

FEATURES:

- Protects wire from damage when pulling
- Can pull wire in all 4 directions
- Use for standard (shallow) or deep boxes
- Built with durable, impact-resistant plastic
- Easy to slip on and off



Part# 40001

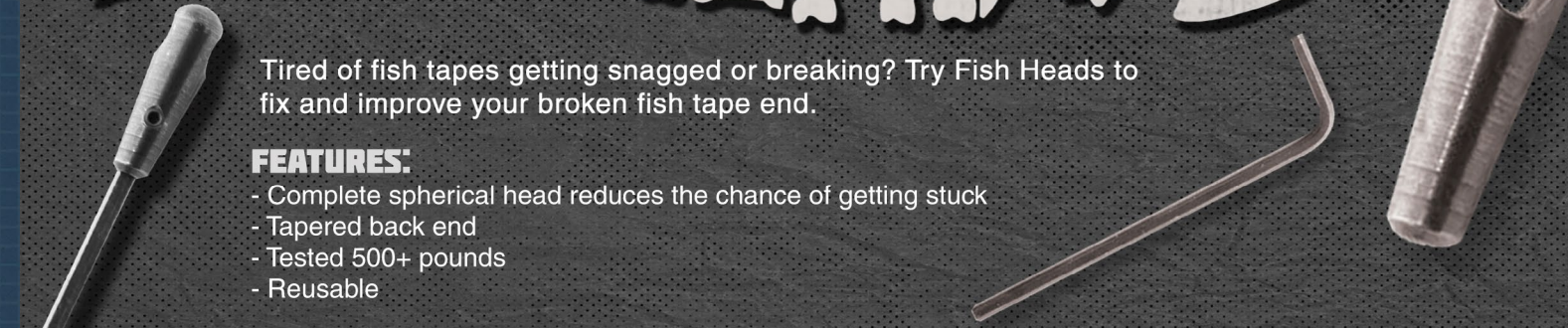
FISH-HEADS

Part# 69010

Tired of fish tapes getting snagged or breaking? Try Fish Heads to fix and improve your broken fish tape end.

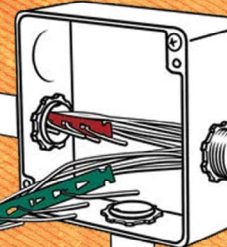
FEATURES:

- Complete spherical head reduces the chance of getting stuck
- Tapered back end
- Tested 500+ pounds
- Reusable



SNATCH STRAPS

Use the Snatch Strap for fast attachment on conduit pulls. No stripping or taping required!

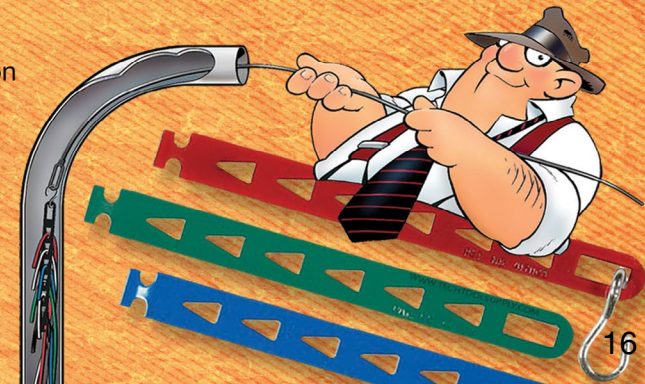


- Pull more conductors with less effort
- Can be chained together
- Color coded for easy circuit and phase identification

MFG Note:

Snatch Strap handles #22 - #12 AWG. If additional wires are required simply add additional straps.

Part# 69455



PART# 42400



ROPEMATIC PRO

THE SMART WAY TO PULL



**STOP HURTING YOUR HANDS AND WRISTS.
STOP BREAKING EXPENSIVE FISH TAPE.**

PULL ROPE AND FISH TAPE THE SMART WAY WITH THE ROPEMATIC.

The Ropematic has a durable latch that grabs rope or fish tape when you are pulling down. As you pull back up, the latch loosens and easily slides up the rope or fish tape. You can then pull down again and the Ropematic will grab the rope or fish tape, pulling it down.



The PUCK

Ground Clamp Socket



Features:

- Compact
- Made from aircraft aluminum
- Indicating line
- Multi-purpose
- Industry-standard ground clamps
- Fits common 1/2 inch drive socket wrenches

A NEW SOLUTION FOR INSTALLING GROUND CLAMPS

Grounding clamps are used to ensure complete discharge of electricity while servicing or maintenance of electrical power systems in substations. There are many varieties of clamps manufactured by different companies, each with different fastening configurations such as an eye-bolt or a T-handle. Technicians use screwdrivers or channel lock pliers to tighten the grounding clamps. This sometimes produces a poor contact on the bus because of lack of accessibility. The Puck, when used with a standard 1/2 inch drive socket, provides the proper leverage in limited visibility or access areas, ensuring a proper contact on the bus.



An "indicating line" for use when working blind.



The Puck fits most brands' T-handles.



The Puck also fits most brands' eye-bolts.

Eye-bolts obstructed by cable further complicate turning the bolts with a screwdriver or channel lock pliers

Designed For:
Electricians
Electrical Workers
Linemen
Utility Industry

SEE IT IN ACTION HERE!



Part# 40950

SolderM8



SolderM8 is an Electricians best Mate

An amazing little gadget created by an Electrician for Electricians. It makes soldering LED strip lights so easy even your most inexperienced apprentice will conquer the skill in no time. You can now provide a high quality, durable finish on full lengths of LED strips in a fraction of the time – it will cut your costs and up your profits. For these reasons SolderM8 is now fast becoming an essential in every professional Electrician's toolbox.

What it Does

The magical underside sticks to flat or textured surfaces at every angle, even upside down. Insert the wires and it holds them in place firmly while you dab on solder and hey-presto the job is done and you move on to the next joint quickly, cleanly and easily.

Part# SM802 *SEE IT IN ACTION HERE!*

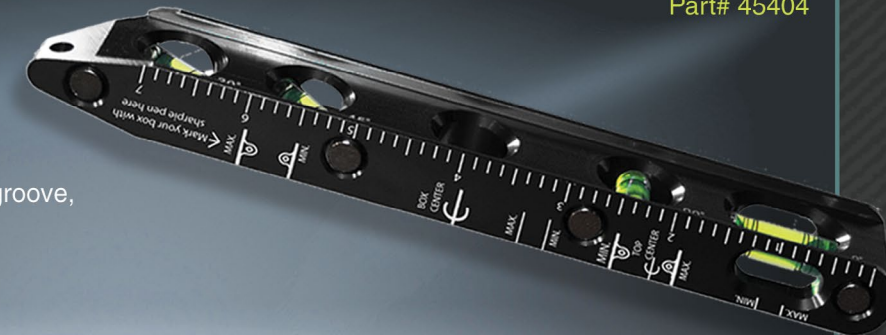


JET LEVEL

This convenient and strong pocket level comes with 4 precision vials of 0, 30, 45, and 90 degrees.

FEATURES:

- CNC milled from 6061 aluminum extra large "VD" groove, straddles up to 10" diameter
- Rare Earth magnets for extra holding
- Water and shock resistant



Part# 45404



BREAKER LOK

SECURE ANY CIRCUIT BREAKER IN THE ON POSITION WITH EASE!

- Universal lock fits most breakers & standard toggle switches.
- Set screw and rigid leg prevents lock from slipping off breaker.
- Reusable & corrosion resistant.



Part# 75000 - 5 Pack

TrunkTie



What is Trunktie?

Trunkties are a simple solution designed to hold, hang, or tag things in position relative to an unpopulated port. Their most common use is to hold tags for identifying network ports, but our customers have found countless creative applications for their use.

How it works

Trunkties plug into an unused port, providing a flexible cable that secures into a multipurpose loop. That's all, it's that simple.

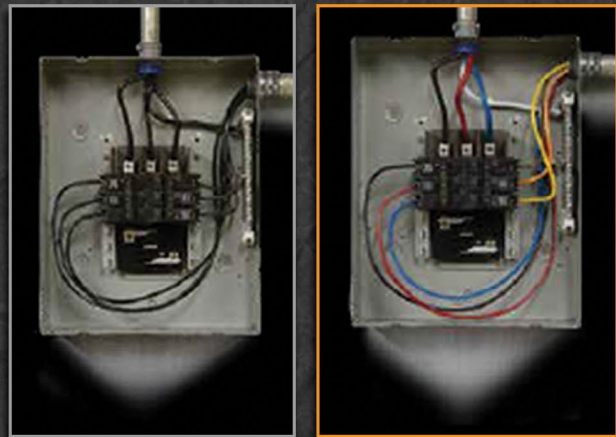
Part # 75065 (Pack of 25)



UPHASE

WIRE MARKERS

QUICKLY AND CONVENIENTLY USE THE UPHASE WIRE MARKER TO COLOR CORDS AND WIRES FOR FAST AND EASY ORGANIZATION



BEFORE AFTER

UPHASE

LARGE WIRE MARKERS

FEATURES

- Patented tip design marks MCM wire up to 3/4 in. quickly, effectively, as well as smaller AWG wire (U.S. Patent No. 7,320,553)
- New, resilient polyester tip lasts longer
- Marks adhere to clean sheath permanently and resist handling, abrasion, and heat
- 10 times more mileage, 20 percent lower cost than vinyl tape
- Green label paint has lower environmental impact than vinyl tape
- Drying Time Approx. 90 sec.
- Marking Temp Range 0 degrees to 110 degrees Fahrenheit (-18 degrees to 44 degrees C)

Part#

52496BK - Black
52496BL - Blue
52496GR - Green
52496RD - Red
52496WT - White

Patent# 7,320,553

Part#

52490BK - Black - 4 pack
52490BL - Blue - 4 pack
52490RD - Red - 4 pack
52490WT - White - 4 pack
52490BR - Brown - 4 pack
52490GR - Green - 4 pack
52490GY - Gray - 4 pack
52490OR - Orange - 4 pack
52490VT - Violet - 4 pack
52490YW - Yellow - 4 pack
52491 - 4 pack Kit (blue, red, white, green)
52493 - 4 pack Kit (gray, orange, yellow, brown)
52492 - Replacement tip

- Electrical Panels
- Colour Coding Wire
- Identifying Wiring Circuits
- CAT-5 Ethernet Cable
- Audio/Video Cable
- HDMI Cable
- Automotive wire

SEE IT IN ACTION HERE!



SEE IT IN ACTION HERE!



MARK MY WIRE

WIRE MARKING SYSTEM



USE HIGH DENSITY, QUICK DRYING MARKERS THE OLD FASHIONED WAY OR THREAD THE WIRE DIRECTLY THROUGH THE HOLE IN THE MARKER'S TIP!
PAINTS ON 14, 12 & 10 WIRE!

AVAILABLE IN:

Blue

Part# 52480BL

Red

Part# 52480RD

Black

Part# 52480BK



PHASE IT RIGHT

PRE-PRINTED COLOR WIRE MARKERS



Phase marking is more than just a numbers game. Get it right with Rack-A-Tiers' colored phase marking tags

4 2 16



#52605 - Low Voltage Sticker Booklets
#1-45 (RD, BK, BL)

52620 - Low Voltage Sticker Booklets
#46-90 (RD, BK, BL)

#52635 - High Voltage Sticker Booklets
#1-45 (OR, BR, YW)

#52650 - High Voltage Sticker Booklets
#46-90 (OR, BR, YW)



#46-90
(BLACK, RED, BLUE)





WiFi INSPECTION CAMERA AND CABLE PULLING TOOL

Built-in WiFi hotspot. Wireless and rechargeable

Wireless range of up to 50' (15m) using a glow rod/fish stick
(It's not tethered like a traditional borescope)

Record photos & videos to your smart device with the free and easy to use App (Android V6/iOS V8 or later)

High resolution 720p HD real time streaming

Bright white LEDs for visibility in complete darkness

Always up viewing mode for intuitive inspections

Digital zoom allows for close up viewing

Includes short rod, gooseneck, hook, magnet and thread adaptors

Visual inspections, cable installations, maintenance and repair work made easy with the Ferret.

NEW FERRET RANGE



THERE'S A FERRET FOR EVERYONE

NEW FERRET RANGE

	FERRET Lite [®] Part #RR117	FERRET Pro [®] Part #RR120	FERRET Max [®] Part #RR150
Take photos & video to smart device	✓	✓	✓
Always up function	✓	✓	✓
Battery charge time to 90% charged	1.5hrs	1hr	1hr
Is holder for cable pulling	✓	✓	✓
Ability to change resolution & WiFi channel	✗	✓	✓
Line (Fibre)	Fiber fibre	Variable fibre	Variable fibre
Optional battery	✗	✗	✓
Built in removable voltage indicator	✗	✗	✓



ACCESSORIES

FERRET WRISTBAND

The Ferret Wristband is a universal phoneholder that will securely hold any smart phone from 3.5" up to 6" in your wrist. With a 360° rotatable front section the phone can easily be turned to the perfect angle needed for any situation.

FERRET STICK

The Ferret Stick is an extendable rod made of lightweight 201 grade stainless steel with non-slip rubber handle & secure end cap. It expands from 33" out to 55" and has a 1/2" ID PVC thread making it fully compatible with all Ferret products.

FIND IT

Locate cables with ease

HOOK IT

Visibility in complete darkness

PULL IT

Pull cabling in half the time

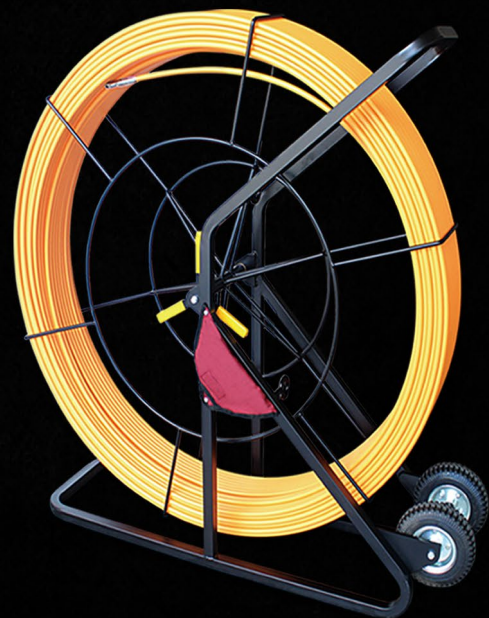
FOR EASIER, FASTER & CLOSE UP VISUAL INSPECTIONS.

INSPECT WITH THE FERRET - SMART TOOL. SMART CHOICE.

FIBER RODDERS

1/2" Part# FS12657 - 1/2" x 657'
Part# FS12985 - 1/2" x 985'

- Fiberglass reinforced plastic with durable plastic surface coating
- Up to 985 ft in length, the 1/2" fish tape is excellent for the big fishing jobs
- Threaded stainless steel ends can be coupled with 4 different end types, including flexible guide, roller guide, pulling eye and clevis.
- High quality, cantilevered frame design provides good leverage and better balance when hoisting onto wheels
- Rubber wheels provide good traction and a smooth ride when transporting from truck to work location



3/16" Part# FS316200 - 3/16" x 200'
Part# FS316300 - 3/16" x 300'

- Fiberglass reinforced plastic fish tape with durable low-friction polyamide coating
- Light and durable steel frame with anti-corrosion surface treatment
- Adjustable knob allows for easy control of wheel rotation speed
- Threaded brass ends can be coupled with ridged pulling eye or flexible guide type leads.
- Brass ends affixed with embedded pins for extra strength, holding up to 300 lbs of force.



1/4"

- Fiberglass reinforced plastic with low-friction plastic coating for smooth pulling.
- Breaking strength of 1400 lbs
- Available in a variety of lengths
- Sleek brass pulling eye with large eyelet for easier access
- Light and durable steel frame with anti-corrosion surface treatment
- Adjustable knob allows for easy control of



Part# FS14200 - 1/4" x 200'
Part# FS14250 - 1/4" x 250'
Part# FS14300 - 1/4" x 300'
Part# FS14400 - 1/4" x 400'
Part# FS14500 - 1/4" x 500'
Part# FS14600 - 1/4" x 600'

FIBER RODDERS SPLICE KIT



FS12.END -End Repair for 1/2" Fibersnake
FS12.EYE -Eye-Loop for 1/2" Fibersnake
FS12.SPL -Splice Repair for 1/2" Fibersnake
FS14.END -End Repair for 1/4" Fibersnake
FS14.SPL -Splice Repair for 1/4" Fibersnake

PLASTIC COATED GLOWFISH

5/32" Diameter luminous rods

Super flexible glow-in-the-dark rods with our new plastic coating process. Great for tight jobs. The handy clear carry case keeps them constantly "charged" and ready.

KITS

GLF407 Glowfish Kit contains: 1 - 6' B/F, 4 - 6' M/F w/ tips
GLF408 3' Glowfish Kit contains: 1 - 3' B/F, 7- 3' M/F rods w/ tips

PLASTIC COATED FIBERFISH II

3/16" Diameter orange rods

The most versatile of the Fiberfish with our new plastic coating process. Perfect for a wide range of installation situations and challenges.

KITS

PCF207 Fiberfish Kit contains: 1 - 6' B/F, 4 - 6' M/F w/ tips
PCF208 3' Fiberfish Kit contains: 1 - 3' B/F, 7- 3' M/F rods w/ tips
PCF230 "FourPack" contains: 1 - 3' B/F, 3 - 3' M/F, tip, and FishHook in vinyl pouch

REPLACEMENT RODS

GLF403 6' Bullnose/Bullnose (B/B) rod
GLF406 6' Bullnose/Female (B/F) rod
GLF410 6' Male/Female (M/F) rod
GLF414 3' Bullnose/Female (B/F) rod
GLF415 3' Male/Female (M/F) rod



REPLACEMENT RODS

PCF206 6' Bullnose/Female (B/F) rod
PCF210 6' Male/Female (M/F) rod
PCF214 3' Bullnose/Female (B/F) rod
PCF215 3' Male/Female (M/F) rod



FFS: FUSION FISH TAPE

This polyester coated fish tape with a fiberglass core gives you the flexibility of a fiberglass fish tape, while maintaining the strength of a steel fish tape.

- Available in 100 and 150 feet lengths
- Non-conductive material
- Brass tipped eyelet end piece
- Polyester coated fish tape with fiberglass core

Part# EGC100 - 100'

Part# EGC150 - 150'

Wire Rope w Polymer Cover in Yellow Case

**THE BEST HYBRID
FIBERGLASS/POLYMER FISH
TAPE ON THE MARKET!
MADE WITH PRECISION IN ITALY.**

POLYESTER FISH TAPE IN CASES

THESE NON-CONDUCTIVE, LIGHT-WEIGHT FISH TAPES IN CASES ARE PERFECT FOR LINE OR LOW VOLTAGE FISHING. AVAILABLE IN SINGLE OR THREE STRAND DEPENDING ON THE JOB.

Part# EP615BC - 2 strand in black case - 49.2' (15m)
Part# EP630BC - 3 strands in black case - 98.4' (30m)

TELESCOPIC RODS

Part# 82016 -Standard Telescoping Pulling Poles 16"
Part# 82026 -Standard Telescoping Pulling Poles 26"

FEATURES:

- Non-conductive, wound filament fiberglass won't rust or corrode
- Polyester resin baked enamel coating
- All purpose hook included



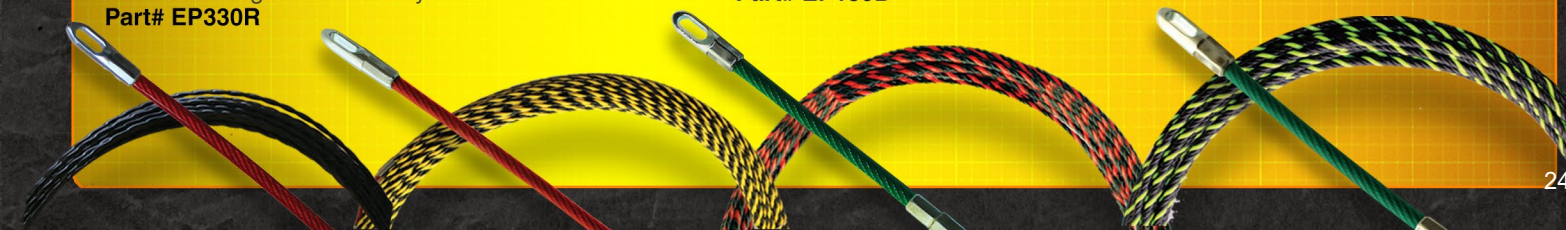
POLYESTER FISH TAPE

4 CORE GREEN & BLACK POLYESTER FISH TAPE:
100ft (30M) The 4 core twisted polyester fish tape is the strongest and most powerful product suitable for long distance electrical work.
Part# EP430G

3 CORE RED & BLACK POLYESTER FISH TAPE:
100ft (30M) 3 core twisted polyester fish tape for increased strength and flexibility.
Part# EP330R

2 CORE POLYESTER FISH TAPE:
165ft (50M) 2 core twisted polyester fish tape coated for reduced friction.
Part# EP250Y

SINGLE CORE POLYESTER FISH TAPE:
100ft (30M) single core twisted polyester fish tape for coated for a light, economical option.
Part# EP130B



JAVELIN



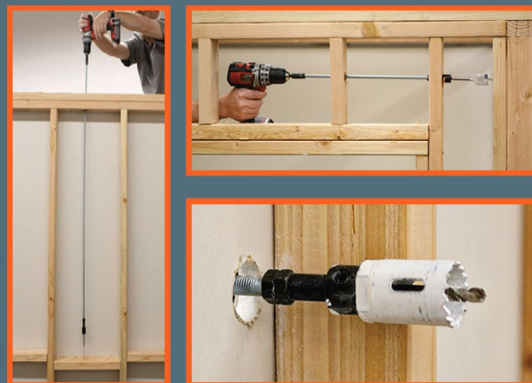
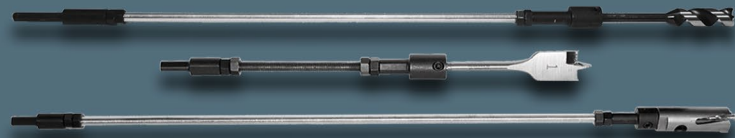
Part# 95000

ALL IN ONE DRILLING EXTENSION

The Javelin is here to change the way we drill holes. Never get caught in a drilling extension jam again! This all-in-one extension drill can reach up to 10 feet. It comes with a fully adjustable hole cutter and auger bit extension kit. Just cut a 3/8" - 16 threaded rod to any length you need.

FEATURES:

- Holds drivers bits
- Holds nut drivers
- Holds drill bits
- Reaches up to 10 feet long



QUATTRO FLEX AUGER BITS

Fast and aggressive self feed auger bits, welded to a flexible shaft. Cuts clean holes. Crossbored at both ends for easy wire pulling. Use for wood only.

Part# QTT3824	3/8"x24"	Part# QTT1224	1/2"x24"	Part# QTT91624	9/16"x24"	Part# QTT3424	3/4"x24"
Part# QTT3836	3/8"x36"	Part# QTT1236	1/2"x36"	Part# QTT91636	9/16"x36"	Part# QTT3436	3/4"x36"
Part# QTT3848	3/8"x48"	Part# QTT1248	1/2"x48"	Part# QTT91648	9/16"x48"	Part# QTT3448	3/4"x48"
Part# QTT3854	3/8"x54"	Part# QTT1254	1/2"x54"	Part# QTT91654	9/16"x54"	Part# QTT3454	3/4"x54"
Part# QTT3872	3/8"x72"	Part# QTT1272	1/2"x72"	Part# QTT91672	9/16"x72"	Part# QTT3472	3/4"x72"

More sizes available



HIGH SPEED STEEL

Superior quality M-2 High Speed Steel drill bit welded to a flexible shaft. Cuts both metal and wood. No need to worry about hidden nails or metal studs when drilling.

Part# FLX1424	1/4"x24"	Part# FLX3824	3/8"x24"	Part# FLX1224	1/2"x24"
Part# FLX1436	1/4"x36"	Part# FLX3836	3/8"x36"	Part# FLX1236	1/2"x36"
Part# FLX1448	1/4"x48"	Part# FLX3848	3/8"x48"	Part# FLX1248	1/2"x48"
Part# FLX1454	1/4"x54"	Part# FLX3854	3/8"x54"	Part# FLX1254	1/2"x54"
Part# FLX1472	1/4"x72"	Part# FLX3872	3/8"x72"	Part# FLX1272	1/2"x72"

GUIDE TOOL

Allows the Piranhabits to bend for drilling from outside the wall cavity.



Part# FIB-GUD

SWITCH BITS

INTERCHANGEABLE FLEX BITS

Rack-A-Tiers is proud to announce the Switch Bit line, our newest line of flexible installer bits. Quickly and easily customize your own set with these flexible bits featuring interchangeable heads and different shank lengths to fit any job.

ETS31621	SINGLE SHANK	3/16"	21"
ETS31633	SINGLE SHANK	3/16"	33"
ETS31654	SINGLE SHANK	3/16"	51"
ETS31669	SINGLE SHANK	3/16"	69"
ETS1421	SINGLE SHANK	1/4"	21"
ETS1433	SINGLE SHANK	1/4"	33"
ETS1454	SINGLE SHANK	1/4"	51"
ETB38316	INTERCHANGEABLE HEAD	3/8"	
ETB916316	INTERCHANGEABLE HEAD	9/16"	
ETB3414	INTERCHANGEABLE HEAD	3/4"	

ETC38S316	SWITCHBIT COMBO HEAD (3/8") & SHANK (3/16" x 33")
ETC916S316	SWITCHBIT COMBO HEAD (9/16") & SHANK (3/16" x 33")
ETC34S14	SWITCHBIT COMBO HEAD (3/4") & SHANK (1/4" x 33")

SOFFIT BIT FOR OVERHEAD SERVICE MASTS

The Soffit Bit is specifically designed to drill through a soffit in a single pass for an overhead mast. The Soffit Bit will drill through multiple materials including wood, nails, aluminum and more.

The Soffit Bit includes a built in arbor, wood and masonry bit.

Part#
95124W
95124M



OverDRIVE™ FAST BORING AUGER BITS

The Over-Drive boring auger bits are specifically designed to not bog down your battery drill. Designed with a 1/4" chuck and available in 3/4" and 7/8".

Features:

- Available in 7" lengths
- 1/4" drill chuck
- Designed to put less strain on your battery drill

Part# AW34OD-3/4" x 7"
AW78OD-7/8" x 7"

AUGER FILE

DON'T THROW AWAY
EXPENSIVE AUGER BITS!

Save those precious auger bits from being another dull tool lying around your shop or work truck. Save time and money by sharpening your bits from the comfort of your own home.

FEATURES:

- Top teeth for auger's main cutters
- Side teeth for sharpening tip

Part# AUFILE

CARBIDE TIPPED HOLESAW KIT

The carbide tipped holesaw kit is perfect for cutting through wood or drywall.

Included in the kit:
- 2 1/2", 2", 1 3/4", 1 3/8", 1 1/8", 7/8" holesaws.
- Large and small arbor



Part# 96250



18" AUGER BITS

Part# AW3818	3/8"
Part# AW1218	1/2"
Part# AW11618	11/16"
Part# AW3418	3/4"
Part# AW7818	7/8"
Part# AW118	1"
Part# AW1418	1 1/4"

7 1/2" AUGER BITS

Part# AW3807	3/8"
Part# AW1207	1/2"
Part# AW11607	11/16"
Part# AW3407	3/4"
Part# AW7807	7/8"
Part# AW107	1"

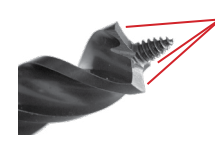
NAIL CHIPPER & STANDARD CHIP AUGER

STANDARD SHIP AUGER



Precision ground cutting edge for fast cutting of clean holes in wood.
Burr-free lead screw for easy starts and pull-through without material build-up.

NAIL CHIPPER SHIP AUGER

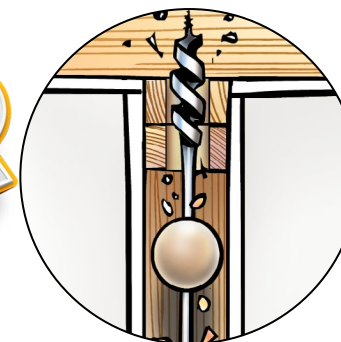


TRI-CUT design with 3 precision ground edges for fast, smooth cutting without resistance.

REDUCES NAILS TO CHIPS without grabbing and leaves a clean hole with minimal "blowout."

To order Tri-Cut Bits add a 'T' to the part #'s

BUMPER BALLS



AUGER SHAFT CENTERING TOOL

- No more bit walking, nail hitting, wall patching or carpet replacing
- Fits all 3/16" shaft auger bits
- Every kit includes two Bumper Balls: 1-1/2" and 2"
- New & Improved plastic model



BEFORE AFTER

Part# BB1520 - Bumper Balls 1 1/2" & 2"
Part# BB1520-916 - Bumper Balls + 9/16"x54" Flex Auger Bit
Part# BB1520-38 - Bumper Balls + 3/8"x54" Flex Auger Bit



FOLLOW US ON



WWW.RACK-A-TIERS.COM

SALES@RACK-A-TIERS.COM

TOLL FREE: 1 (888) 939-9991

CO-PILOT



PART# 91720

FEATURES:

- Enlarge any hole while keeping it centered
- Hole enlargement made fast and easy in under 2 min
- Versatile fit works with all arbours
- Can be used for wood, plastic, drywall (limitations set by hole saw)
- Small enough to fit in most hole saw kits
- Accompany with the Dust Bowl for mess free result

SEE IT IN ACTION HERE!



MULTI BIT: STEP DRILLS

Hardened stepped bits for clean cuts in sheet metal, electrical boxes, arborite, etc. Handy for creating knockouts. Made from high grade cobalt.

- Part#
- MLT1 - Size: 1/8" - 1/2" 13 Step
 - MLT3 - Size: 1/4" - 3/4" 9 Step
 - MLT4 - Size: 3/16" - 7/8" 12 Step
 - MLT5 - Size: 7/16" - 1 1/8" 12 Step
 - MLT7 - Size: 1/4" - 1 1/2" 11 Step



THE GUIDE-O



The Guide-O allows you to enlarge holes utilizing a pilot bit the same size as the existing hole. By using a pilot bit that matches up to the existing hole, the hole cutter will stay centered while drilling the new, larger hole.

FEATURES:

- Fits most standard carbide and bi-metal hole cutters
- Kit includes 1/2", 3/4" and 1" pilot bits
- Made from carbon steel
- *Hole Cutter not included



Part#'s

- 94050 - 1/2"
- 94075 - 3/4"
- 94100 - 1"
- 94200 - Guide-O Kit (1/2", 3/4", 1")
- 94225 - 2 1/2" Shaft Replacement
- 94226 - 2" Shaft Replacement
- 94050B - 1/2" Bi-Metal
- 94075B - 3/4" Bi-Metal
- 94100B - 1" Bi-Metal
- 94200B - Guide-O Bi-Metal Kit (1/2", 3/4", 1")

High Performance CARBIDE TIPPED STEEL CUTTERS

- Part#'s
- 92HC4 - Steel Cutters 7/8"
 - 92HC8 - Steel Cutters 1 1/8"
 - 92HC14 - Steel Cutters 1 3/8"
 - 92HC20 - Steel Cutters 1 3/4"
 - 92HC22 - Steel Cutters 2"
 - 92HC24 - Steel Cutters 2 1/2"
 - 92KIT4 - 4-Pc Set: 7/8", 1-1/8", 1-3/8", extra pilot bit
 - 92KIT8 - 8-Pc Set: 7/8", 1-1/8", 1-3/8", 1-3/4", 2", 2-1/2", 2 extra pilot bits

FEATURES:

- Ejector spring
- Tapered center drill
- Carbide tipping allows for repeated regrinding



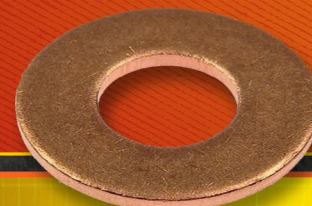
SDS BITS

- Part# 91814 - Masonry Drill Bit SDS 1/4"
- Part# 91838 - Masonry Drill Bit SDS 3/8"

COPPER WASHER

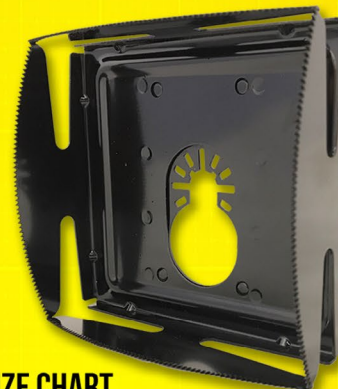
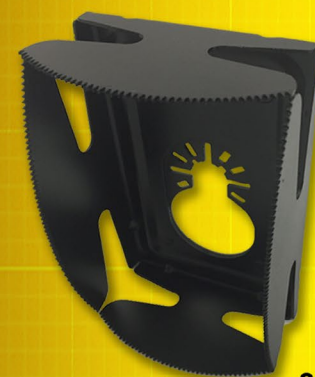
SMALL SOLUTION FOR BIG PROBLEMS

IN A BIND WITH YOUR HOLESAW? GET FREED UP WITH OUR COPPER WASHERS








- Part#
- 90512 - 1/2"
 - 90558 - 5/8" *Packs of five

Q-BIT: DRYWALL HOLE CUTTER



Q-BIT SAW SIZE CHART

PART #	BLADE SIZE					
42710	2 1/8" X 3 5/16"	X	X			
42740	2 1/4" X 3 5/8"			X		
42700	2 3/8" X 3 3/4"				X	
42720	3 3/4" X 4"					X

The Q-Bit is a revolutionary hole cutter that allows you to quickly cut out device holes. The Q-Bit is built to work with any standard oscillating tool



ROUND MULTI-TOOL HOLE CUTTER

CUT HOLES WITH PERFECT PRECISION

THE ONLY ROUND MULTI-TOOL HOLE CUTTER ON THE MARKET

- Available in 3 different sizes
- The only multi-tool hole cutter
- Easy to mount & change
- No harbour needed
- No center guide needed
- Clean & fast

- Part#
- 42670 - 2 1/2"
 - 42675 - 3"
 - 42680 - 4"

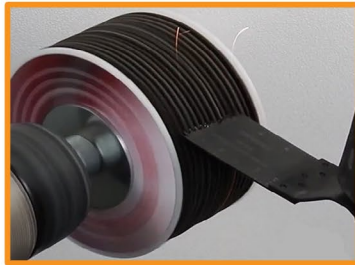
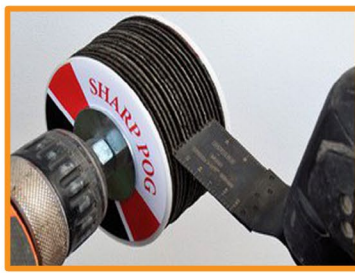


*Patent Pending

SHARP POG

OSCILLATING BLADE SHARPENER

Quickly & effectively sharpens oscillating saw blades with the use of a hand drill.



ELECTRICIAN'S KIT

4 OF THE MOST POPULAR STYLE MULTI-TOOL CUTTING BLADES



- Includes 2x Bi-Metal Blades and 2x Wood/Plastic Blades
- Cuts very quickly and neatly through wood & drywall
- Notch out joists and studs for cables & pipes
- Cuts out cabinetry for device boxes
- Remove baseboards for heaters and devices
- Creates minimal dust and disturbance
- Cuts easily in awkward access situations



Made In China

Part# H4EMK - Electrician's Kit (Four Blades)

Part# H32CJ1 - Japanese Tooth Blade - 32mm

Part# H44BM1 - Bi-Metal Blade - 44mm

Part# H63CJ1 - Japanese Tooth Blade - 63mm

Part# H44TN1 - Titanium Alloy Bi-Metal Blade - 44mm

The Electrician's Kit has a great selection of blades that any electrician needs and would use on a regular basis! Featuring coarse and fine-tooth blades as well as bi-metal blades, this kit has everything you need for almost all applications.

Compatible with Milwaukee, DeWalt, Makita, Bosch & More

WORK SMARTER NOT HARDER.

JUST ASK ANY MULTI-TOOL USER AND THEY ARE ALMOST GUARANTEED TO SAY "THEY DON'T KNOW HOW THEY GOT BY WITHOUT IT!"

Part# H44TN1



44MM ULTIMATE TITANIUM ALLOY BI-METAL SMART BLADE

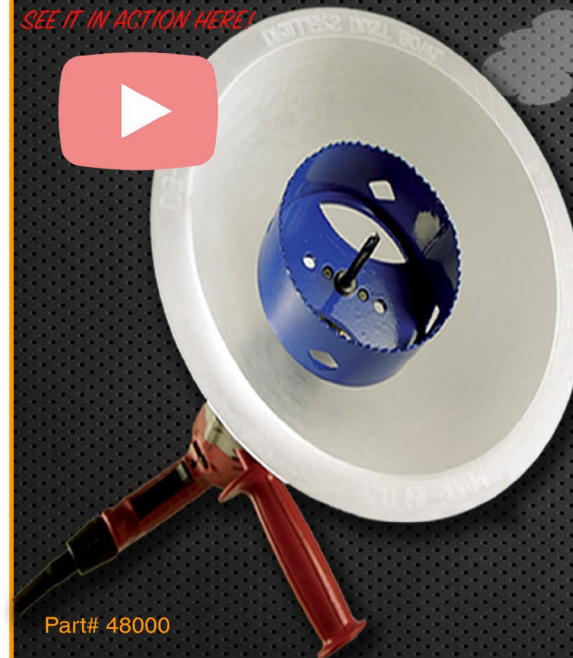
The Titanium coated bi-metal blades are a great long-life blade solution. Made for cutting through wood AND nails and screws! The titanium coating helps reduce the heat build up on the blade, preserving the tooth design and maintaining a sharper blade for longer lasting cuts in wood!

NO MORE MESS EASY DISPOSAL OF DEBRIS WORKS WITH HOLE SAW UP TO 8" AND DRILL BITS TOO!

Driller's Dust Bowl

THE FLEXIBLE DRILLER'S DUST BOWL COMPRESSES AGAINST THE WORK SURFACE AND TRAPS ALL DUST AND DEBRIS AS YOU DRILL. THE BOWL FITS YOUR DRILL AND HOLE SAW WITHOUT ANY ADJUSTMENTS NEEDED.

SEE IT IN ACTION HERE!



Part# 48000



Mfg Note:

You may enjoy a face full of drywall dust, but your customers might not. Put an end to "unprotected hole sawing" and wrap up with the Driller's Dust Bowl.



Driller's Dustbowl PRO

NOW AVAILABLE WITH A VACUUM PORT FOR THOSE SUPER DUSTY

- The same great Dust Bowl now with a vacuum port for those super dusty jobs
- No more mess
- Works easily with your hole saw



Part# 48020

HOLE-IN-ONE MULTI-FUNCTION HOLE CUTTER

SAVE YOUR LUNGS! CUTTING HOLES WITHOUT PROTECTION CAN BE HAZARDOUS TO YOUR HEALTH. PROTECT YOU AND YOUR CREW WITH THE HOLE-IN-ONE.



CUTS THROUGH:

- Plywood
- Sheetrock
- Fiberglass
- Fiber cement board
- Up to 20 GA. sheet metal
- Aluminum

PILOT BIT

Part# 90199



CARBIDE REPLACEMENT BLADES

Part# 90-VT



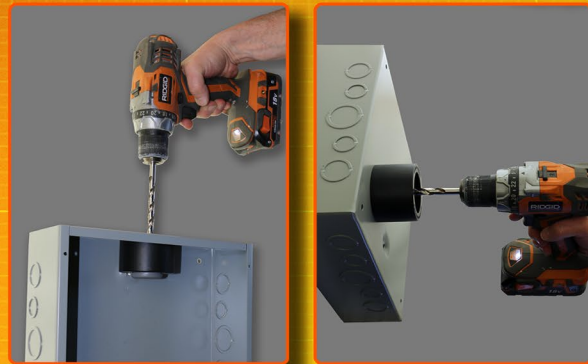
HSS REPLACEMENT BLADES

Part# 90-VH

Part No. 90200 - 1 7/8" to 9"
Part No. 90300 - 1 7/8" to 12"
Part No. 90400 - 1 7/8" to 17"

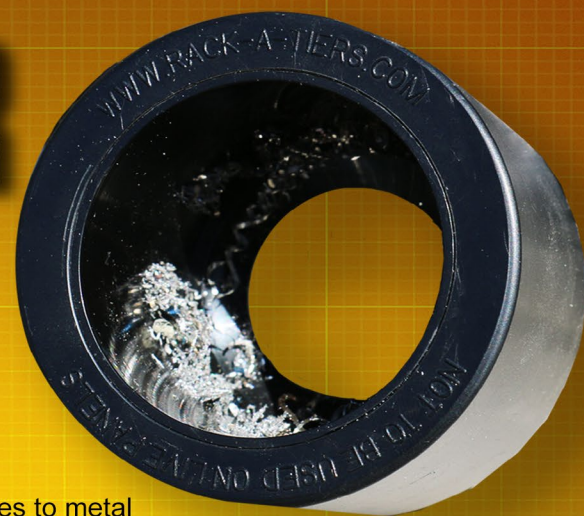
CHIP CATCHER

The Chip Catcher adheres to metal surfaces using rare earth magnets. Metal shavings are attracted to the magnets embedded in the cylinder walls. Makes for easy clean up!



- Increases safety
- Magnet base attaches to metal surfaces & catches metal shavings
- Quick & convenient clean-up

Part# 84100



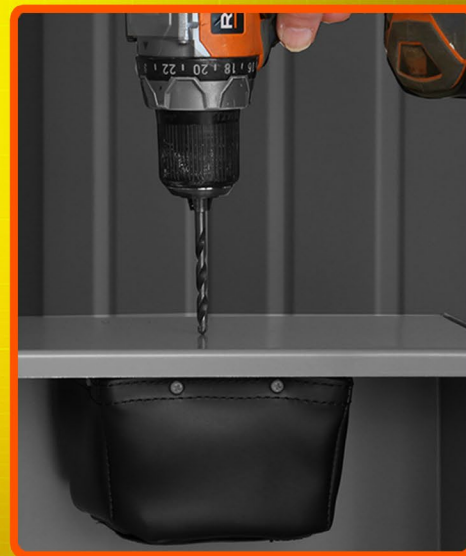
***NOT TO BE USED ON LIVE PANELS**

DIRT BAG

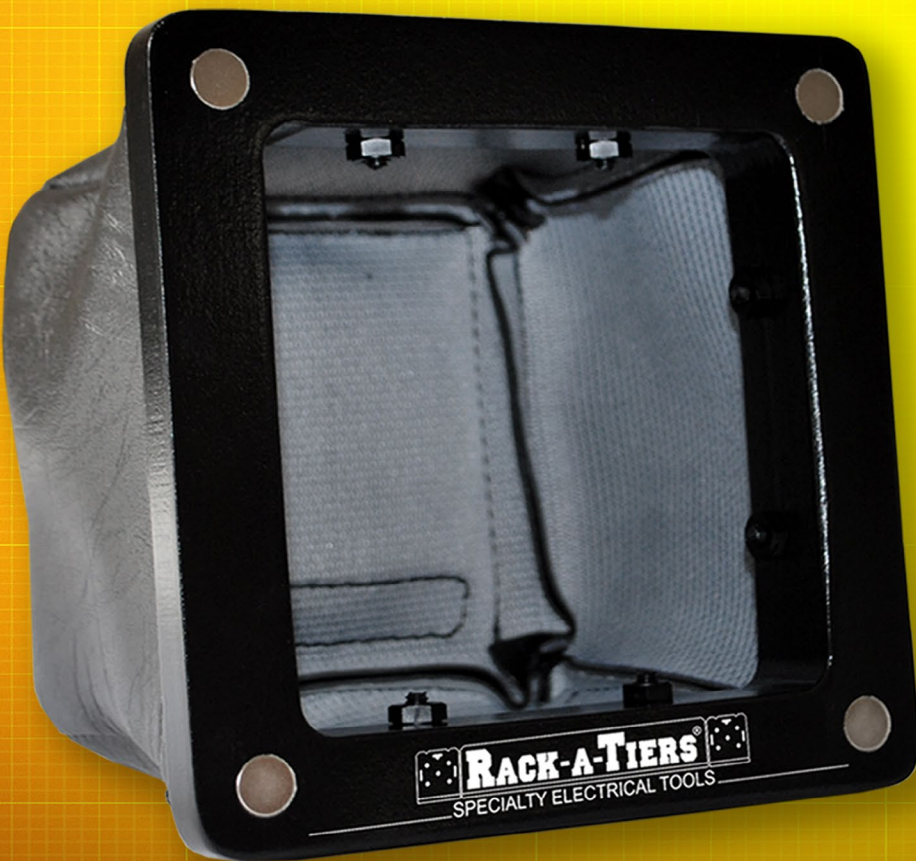
Electrical Safety Drilling Tool

The Dirt Bag is specifically designed to eliminate metal shavings from spreading throughout a panel while drilling. Utilizing extra strong rare earth magnets in the frame, the Dirt Bag clings to the metal surface to catch all debris caused by drilling.

- Magnet in base of bag attracts filings
 - Increases safety
- Easily attaches to metal surfaces
- Made from non-conductive material
- Removable magnet included in bag pocket
 - Fits most panels



Part# 84000



***NOT TO BE USED ON LIVE PANELS**



TREE HUGGER

TREE MOUNTED LIGHT/BOX BRACKET

Patent# US62/983,388
Part# 85200

YOUR LIGHTS WILL GROW UP WITH YOUR TREES!

The Tree Hugger bracket shifts with your tree as it goes wider and taller saving it from cracking or breaking. It will also save you time and money by cutting out the need to adjust the light focus points as the tree grows.

The slide is what makes it unique as a tree grows wider and taller.

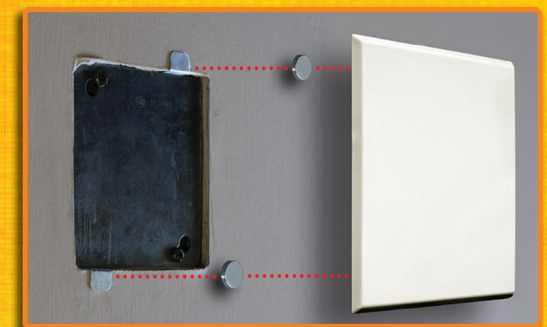


6.5 INCH PLATE

FEATURES:

- Installs in seconds with rare earth magnets - snaps in place to metal clips (included)
- White decorative plate covers 5-1/2" square hole or electrical box
- Can also be used to cover a round hole with up to a 5-1/2" diameter
- Visually appealing white decorative plate - no need to paint metal covers

Part# D612



DRYWALL TRAPPER

Part# 48400



The Drywall Trapper was created to save time and money for AV & electrical contractors. Cutting into a drywall ceiling is an extremely messy task. The Drywall Trapper has changed all of that. Now you can be in and out of retrofit projects in a fraction of the time and stay clean and tidy.

- Traps the fine particles and large pieces while working overhead.
- Heavy duty vinyl provides a clear viewport to the cutting area.
- Large enough to cut holes for large speakers and light fixtures.
- Rugged construction for the most challenging environments.

Width: 20.5cm (8.07inch) / Height 14cm (5.51inch) / Base: 7.5cm (2.95in)



COLLAPSIBLE EASY ASSEMBLY DURABLE VINYL WINDOW SOLID CONSTRUCTION

Part# 32050

POKE-E

TAME YOUR CABLES

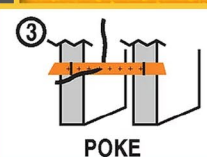
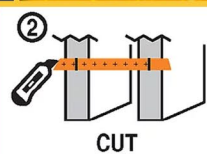
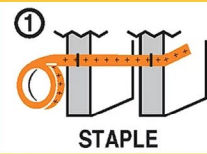
Dreamed up by an electrician who was tired of his wired being buried in the walls. The **Poke-E** is a perforated strip that solves that issue by holding your cables in the exact place you intended them too. The **Poke-E** is installed in the rough in stage of construction in both residential and commercial applications.

Install in 3 easy steps: Nail, Cut and Poke

Features:

- Made in USA
- Holds up to a 1/2" fixed diameter cable
- Patent Pending

The **Poke-E** is intended for use with **Class 2 wiring only.**



LASER PLUMB BOB

Looking for a better way to lay out complex ceiling and high bays? The Laser Plumb Bob, self leveling vertical laser from Rack-A-Tiers is the answer!

FEATURES:

- Solid brass construction
- Factory aligned laser module calibrated to precise 0.15 accuracy
- Magnetic damping for quick stabilization
- Self leveling and aligning (vertically)
- Durable plastic carry case
- Battery included

PART

88455 - LASER PLUMB BOB

REPLACEMENT PARTS

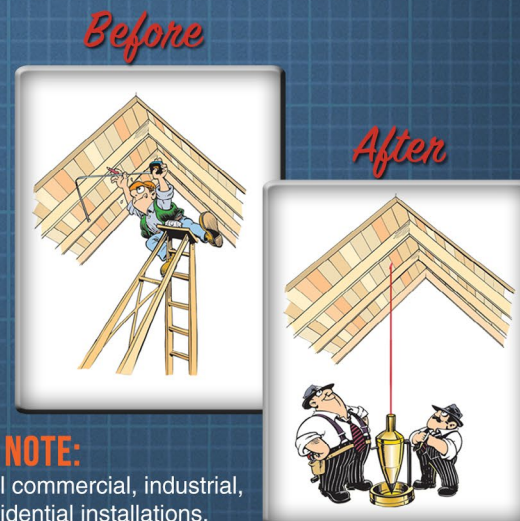
88-ARM - LASER PLUMB BOB ARM WITH MAGNET ATTACHED

88-BASE - LASER PLUMB BOB BASE

88-BAT - LASER PLUMB BOB BATTERY CR 123

MFG NOTE:

For all commercial, industrial, or residential installations. Great for laying out ceiling lights.



MAGNEPULL

Extremely powerful, yet delicate, magnetic wire snake for fishing wire through walls. It even works through insulation! This new version has a much stronger magnet and a smoother rolling surface.

SEE IT IN ACTION HERE!

MFG NOTE

Any fiberfish can easily be threaded onto the magnet head. This will help push through dense insulation and guide through fire-block drill holes.

Part# 42800

MAGNESPOT



The MagnetSpot is a reference point locator that gives users complete self-assurance before drilling, cutting, or any other task you may previously had to do blindly. Place the MagnetSpot Transmitter on the wall, ceiling, or floor that you need to drill.

Senses up to 30" through concrete & 60" wood frame wall

On the other side hold the Receiver in the general direction of the transmitter, the red LED arrows on the Receiver will indicate to you which direction to move. When all 4 Arrows illuminate, the Transmitter and Receiver are lined up within a 1/2 inch.

Part# 42900

SEE IT IN ACTION HERE!

LASERLINE

REDUCE EFFORT IMPROVE PRODUCTION CUT LABOR EXPENSE

FEATURES:

- Accurately install a pull line up to 200ft
- Cuts labor costs and improves production
- Ability to span over heavy and hard to move objects found in many commercial structures
- Replacement line and darts available



Tired of wiggling through a crawl space just to drag your wire to the other end? Fire the Laserline, attach your wire, then walk around and pull it across while standing. It's that easy!

The CO2 powered gun shoots a foam dart with a line attached to it up to 200ft. Stop climbing your ladder and moving it every ten feet to pull your wire across a t-bar ceiling. Pull your wire the entire distance in one shot with the Laserline!

MFG NOTE

- The Laserline Kit includes 1 gun, 2 spools of line (1200 ft each), 2 darts and 2 generic CO2 cartridges.

PART

83000 - LASERLINE KIT

83001 - REPLACEMENT LINE 2-1200FT

83003 - DART 3 PACK

Exploding



GARBAGE CAN ULTRA

Part# 51020



The Exploding Garbage Can Ultra is the new and improved pop-open garbage can. Utilizing the same concept as our Classic Exploding Garbage Can but featuring a reinforced hard bottom for increased durability. Perfect for on the job, camping, tailgating or landscaping.



EXPLODING Classic GARBAGE CAN

Part# 51000

One of our classic tools that everybody loves, the Exploding Garbage Can comes in use every single day. This collapsible trash container, featuring an internal support spring that "springs into action", is made of heavy duty, tear resistant 600D Oxford Polyester fabric.

FEATURES

Size of 19" x 24" when open
Size of 1 1/2" x 24" when collapsed

SEE IT IN ACTION HERE!



FEATURES:

- Sturdy
- Comfortable
- Hook & Loop Straps

Part# 66455



Gel Implanted

KNEE PADS



BOOTIES

Booties available in bulk and bags of 6 pairs.

Part#

47095.B. - Booties (25 Pairs)

47099BB - Six Pack of Booties



COMBO TOOL BELT

INCLUDES:

Molded support belt, Electrician's tool pouch, Large 9 pocket tool pouch, Hammer holster and tape holder.

SEE IT IN ACTION HERE!



FEATURES:

- Reinforced with bar-tack stitching & heavy duty metal rivets
- 1250 denier DuraTek fabric with high density nylon webbing around pocket openings.

Part#

- 43241 - Small Combo
- 43242 - Medium Combo
- 43243 - Large Combo
- 43244 - X-Large Combo
- 43245 - XX-Large Combo
- 43246 - XXX-Large Combo
- 43201 - Electrician's Tool Pouch
- 43202 - Lrg 9 Pocket Tool Pouch



MOLDED AIR-CHANNEL SUPPORT BELT

FEATURES:

- The first ever 'Molded Air-Channel Tool Belt' that offers incredible comfort, support, & ventilation for your back.
- The high density nylon 'Web Core' inside the padded belt provides strength to stitching & stress points.
- Metal rings are stitched to the belt's web core with high-density nylon webbing that provides the strongest way possible to attach suspenders.
- All stress points are reinforced with 'bar-tack' stitching along with heavy duty rivets.
- Double metal buckles that add strength and dependability.
- All of our belts and bags are made from double layered 1250 denier DuraTek fabric.
- Available in sizes from 26" to 54"

- 43401 - Small Belt
- 43402 - Medium Belt
- 43403 - Large Belt
- 43404 - X-Large Belt
- 43409 - XX-Large Belt
- 43410 - XXX-Large Belt



SMALL 25 POCKET TRAY TOOL CARRIER

FEATURES:

- 16 exterior pockets
- 9 interior compartments and pockets
- 1 qty 7" x 5.5" 12 compartment plastic tray
- 10.5" W x 10.5" L x 8" H
- Tape holder
- Includes shoulder strap

Part# 43707



LARGE 44 POCKET TRAY TOOL CARRIER

FEATURES:

- 29 exterior pockets
- 1 large clear pocket
- 14 interior compartments and pockets
- 2 qty 7" x 5.5" twelve compartment plastic tray
- Tape holder
- Includes shoulder strap

Part# 43706



MOLDED AIR-CHANNEL SUSPENDERS

INCLUDES:

- Adjustable thick molded foam shoulder pads
- 2" wide adjustable nylon straps
- Leather crossover divider
- Heavy duty spring hooks that attach to the rings on the molded Air-Channel belts

FEATURES:

Our popular padded suspenders easily clip onto the sturdy metal rings that are built into our tool belts. The padded shoulder straps make these the ideal set of suspenders for your tool belt rig.

Part# 43606



Introducing **Boulder® Bag**

BUILT ROCK SOLID™

Boulder® Bag Tool Belts are Rated #1 in the industry.
The Tool Belt of choice for over 20 years!

**3 year
WARRANTY**



SEE IT IN ACTION HERE!



CUSTOM DESIGNS AVAILABLE ON ORDERS OF 50
CALL US FOR MORE INFORMATION

FEATURES:

- Double layered 1000 denier Cordura® Classic Nylon
- Long lasting Velcro® Brand Velcro
- 13 Slots / 19 Pockets
- Thick nylon webbing to strengthen pockets and hold them open
- Double locking rivets
- High density, long lasting, comfortable closed cell foam - designed to keep a belt full of tools from rubbing you the wrong way
- Original one-piece boxed bottom design

Made In USA



PART#

- 46241 - Small/Black
- 46242 - Medium/Black
- 46243 - Large/Black
- 46244 - X-Large/Black

ULTIMATE ELECTRICIAN COMFORT TOOL BELT

The Boulder Tool Belts and Bags are designed for the professional that knows exactly what they need, and exactly where they need it. With Boulder you'll work better and faster using our well organized bags. Tools you use will always be within a quick, easy reach. Our design provides for simple adjustments and easy storage without spilling contents.

The 'Electrician' line of belts have been specifically designed for the professional Electrician. Pouches have plenty of pockets and loops to hold tools upright and accessible.

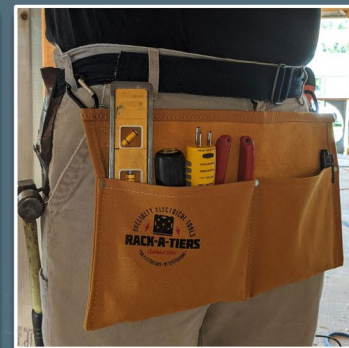
- Ergonomic design and superior material: best quality, very light, versatile, strong and sturdy
- Comfortable to wear. Material is high quality and waterproof.
- Machine washable
- Large capacity and functional: specifically designed for Electricians
- 5 sizes (S, M, L, XL) *2XL available as a special order item



SNAP SACK

Part# 43150

NEW CANVAS & LEATHER TOOL APRON



Most tool aprons are just made out of canvas, which is NOT the flimsy material you want full of screws, staples and countless other sharp objects – especially in such a sensitive area! If you want comfort, functionality and durability the Snap Sack is the apron for you. The leather lining will assure that you don't get poked, jabbed or shanked on the job!

Features:

- No strings to tie or untie
- Clip to your belt with snap buttons or use the carabiners on your belt loops
- Leather liner helps protect from damage and poke throughs

PROJOB Pants & Shorts

Poly-Cotton Blend Multi-Pocket Protector Pants

FEATURES:

- Two hanging pockets that can be tucked away (One side has extra pockets, one side has tool slots)
- Tool pockets are reinforced with 100% Cordura
- Two adjustable hammer holders, cell phone pocket, two d-rings and pen pocket
- Opening on the inside for knee pads
- Material: 65% polyester, 35% cotton
- Color: Navy



Mid Weight Shorts

FEATURES:

- Two hanging pockets that can be tucked away (One side has extra pockets, one side has tool slots)
- Tool pockets are reinforced with 100% Cordura
- Two adjustable hammer holders, cell phone pocket, two d-rings and pen pocket
- Material: 70% polyamide, 30% cotton
- Color: Grey



Full Weight Multi-Pocket "High Vis" Protector Pants

FEATURES:

- Two hanging pockets that can be tucked away (One side has extra pockets, one side has tool slots)
- Tool pockets are reinforced with 100% Cordura
- Two adjustable hammer holders, cell phone pocket, two d-rings and pen pocket
- Opening on the inside for knee pads
- Material: 100% Cotton
- Color: Grey



Mid-Weight Multi Pocket Pants

FEATURES:

- Contrasting tones construction pants with holster pockets that can be tucked in, one with extra pockets and one with tool loops
- The nail pockets are reinforced with Cordura®
- Deep side pockets with room for the hanging pockets
- Two adjustable hammer holders / Two D-rings
- Folding rule pocket with tool pocket and knife button
- Height adjustable inside kneepad Cordura® pockets

FOR SIZE INFORMATION AND PART
NUMBERS VISIT RACK-A-TIERS.COM

BUTT POUCH POCKET TOOL HOLDERS

FEATURES:

- Quick to put on & COMFORTABLE!
- Tool pouches fit in your pocket
- Made of ballistic nylon
- Lightweight & durable



GRANDE

Part# 43095



PAPA GRANDE

Part# 43100



MINI

Part# 43015



STUD BALL

MAGNETIC STUD FINDER

The Stud Ball is a protected magnetic stud finder that will out-perform all other types of magnetic stud finder on the market. Unlike other steel stud finders, the Stud Ball can detect metal through 1/2" or 5/8" drywall or other thicker building materials. Will also work through ceramic tiling and up to 3/4" plywood paneling.

- Rare Earth magnets with 27 lbs of pull
- No batteries required
- Detects screws or nails in wood frame walls

Part# 52300



Part# 40905 - 1/2" thread
40907 - 3/4" thread
40910 - 1" thread

PIPE SPINNER

WRAP A 10 FOOT PIPE IN 10 - 20 SECONDS!

The Pipe Spinner allows you to speed up the process of taping IMC, galvanized conduit or black iron conduit in mil tape for underground applications. Instead of taping the pipe by hand, simply attach The Pipe Spinner to your drill and have your co-worker hold the tape while you spin the pipe.

FEATURES:

- 1/4" drill attachment for quick change drills
- Available in 3 sizes: 1/2", 3/4" and 1"
- Saves time and money



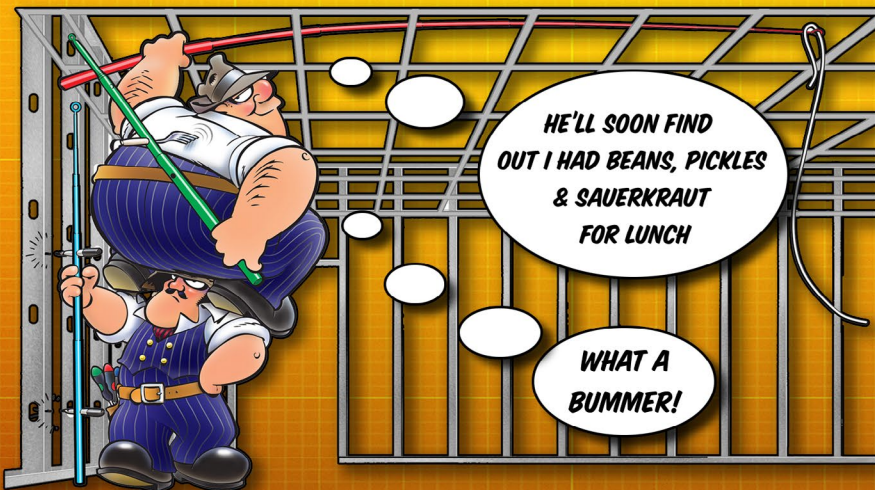
THE ROUGH-IN STICK

The Rough-In Stick allows you to mark out devices conveniently and efficiently by utilizing specifically designed holes to fit your felt marker. The Rod also features a telescopic pole for those tricky fishes.

FEATURES:

- Easily mark stud walls for device installation
- No need to use your tape measure while laying out devices
- Telescopic pole aids in pulling wire above ceiling grids and areas of limited access
- Extends up to 16'

MARK STUDS AT 12", 18", 42" 48" & 60"



Part# 82000



GPS LIGHTLOCK

ASTRONOMICAL TIMERS

Onboard GPS does all your programming & maintenance

GPS LightLock automatically sets your date/ time & location, programs the switch times for your location, self-recovers from power outages & keeps the clock timed to the GPS atomic clock. You'll never have to deal with controls maintenance again, and you never pay a fee to use the GPS system!

Pays for itself many times over in servicing costs alone

Servicing controls is very expensive. Electricians perform hazardous work. They are well paid, as they should be. The retail price of GPS LightLock is a fraction of the cost of a single service trip charge to replace a photocell or re-program a timer.

GPS LightLock now offers custom programming to meet your requirements stored in memory forever, and you still won't have to program a timer ever again. Still self-recovers from power outages and still requires no user programming, maintenance or even batteries!

SEE IT IN ACTION HERE!



Twist-Lock Astronomical Timer 120-277VAC

Installs in under a minute!

The world's only fully automatic astronomical timer. Switches lights dusk-to-dawn anywhere in the world. Plug & play. Never needs programming. Self recovers from power outages. Direct replacement for twist-lock photocells.

Part# 85-GPS-MV-T



Wire-In Astronomical Timer 120-277VAC

Our most popular model.

Includes twist-lock astronomical timer plus wire-in twist-lock socket with 1/2" standard female thread.

Direct replacement for all wire-in photocells and programmable timers.

Part# 85-GPS-MV-W



THE WORLD'S MOST ACCURATE TIME KEEPING SYSTEM

GPS LightLock

- Self-Programming
- Maintenance Free for 15 Years
- Self-Recover from Power Outages
- No Servers, Software or Network Infrastructure
- Nothing to Learn, Monitor or Maintain

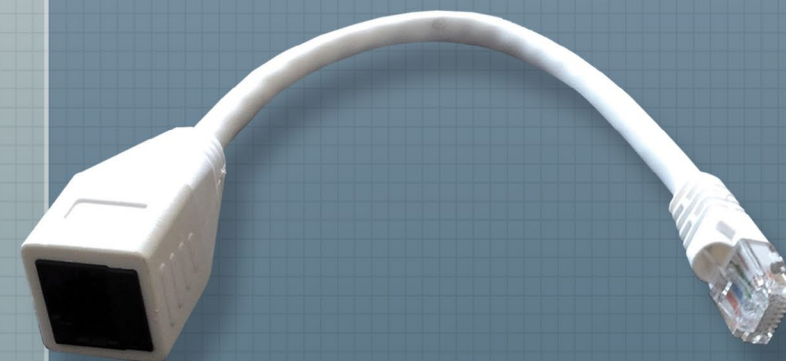
TRACER WIZARD

TONER ADAPTOR

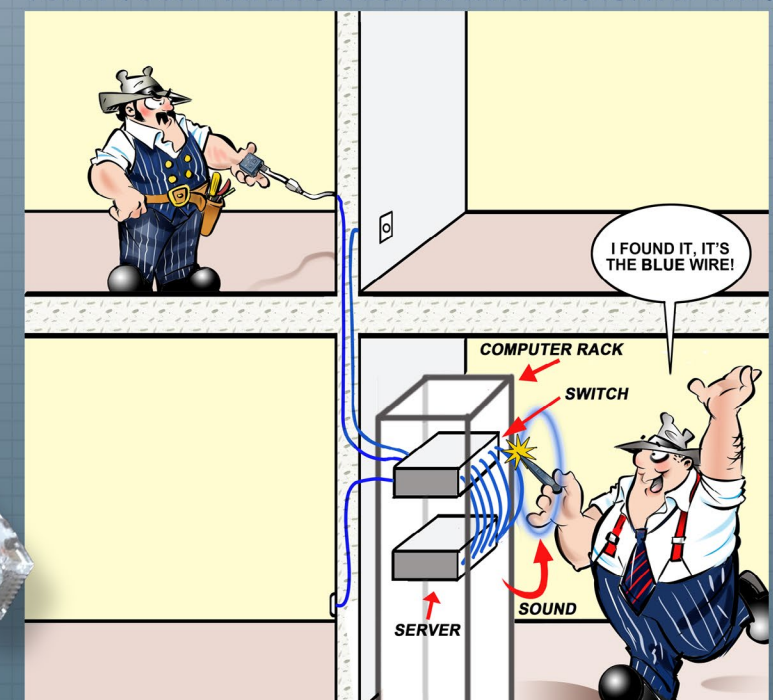
TURN YOUR ANALOG TESTER INTO A DIGITAL ONE!

Features:

- Devices do not have to be taken offline to tone out
- Locating cables is fast and easy as long as the Wizard is connected between the tone generator & jack
- A must have tool for a toolbox
- No batteries required



Part# 99060



FLASHLIGHTS



Part# 53600
Stick Bug
160 lumens

THE STICK BUG

The Pocket Light just got brighter, stronger and better. Some call it supercharged! With the new technology of COB LED technology, it has 150/160 lumens - 2 times the amount of the original pocket light. With the durable and strong pocket clip and improved magnetic base, you'll never be left out in the dark again.

FEATURES:

- COB LED
- 160 Lumens
- Operates on (3) AAA batteries
- Up to 7 hours run time
- Water resistant button
- Batteries included

HEAD LIGHT

USB RECHARGEABLE

Part# 54075
Bulb: COB LED
Max Output: 150 Lumens
3 Modes: High, Low and Strobe
Runtime: High (4 Hours) Low (12 Hours)
4-hour charge time
Impact and Water Resistance

BAT LIGHT

The Bat flashlight has a durable, scratch and corrosion resistant anodized aluminum frame.

12" Bat Flashlight
Part# 53750
- 3W Cree LED 300 Lumens
- 3 x AAA Batteries Included



THE SILVER BULLET

Part# 53800

12-24v Car Charger Flashlight

FEATURES:

- CREE LED 300 Lumens
- Li-ion Battery
- Aluminum Alloy
- Recharge Time 2-3 hours

FIREFLY

Part# 53400

The Fire Fly is a compact aluminum flashlight that features 3 light outputs with and has an output of 120 lumens.

FEATURES:

- 120 lumen output
- Light Modes: High output, low output, flash
- Mechanical zoom function
- 3 AAA batteries included



LED SAFETY HEADBAND LIGHT

The Safety Headband Light attaches to any hard hat and produces a ring of light around the wearer, enabling him or her to be easily seen in all directions.



FEATURES:

- Shadow-free, panoramic visibility
- Non-slip hard hat attachment
- Only 40 grams (1.4 oz) extra hard hat weight
- Powered by two button cells or rechargeable LED
- Operates up to 24 hours with premium brand batteries or USB Charger

Part#'s
54000 - Standard
54020 - Rechargeable

PLUG MASTER



The Plug Master combines a full function dual-outlet circuit tester with 220V detection and multiple direction bubble-levels. Eliminate the need for multiple tools to test and straighten any wall outlets.

FEATURES:

- Acts as horizontal and vertical level
- Use for diagnostics
- Perform quick wiring checks
- Panel identifies conditions shown by LED indicators
- Removable side panels cover outlet during insertion



Part# 99102

AC SENSOR & ULTIMATE AC SENSOR



Prevent electrical shock with this simple tool to locate dangerous defective grounds. This handheld device helps you determine the presence or absence of 50-1000 Volts AC in insulated wires, wall receptacles, fuses, junction boxes, and voltage carrying electrical systems. The bright, red glow indicates AC voltage.

FEATURES:

- Non-contact detection of 50-1000 VAC
- Includes 2 replaceable AAA alkaline batteries
- Senses voltage without metallic contact
- Outstanding safety instrument



Part# 99000 (Red Glow - No Sound)

Part# 99001 (Red Glow - w/Sound)

DUALCHECK™ NON-CONTACT VOLTAGE TESTER

Save time and money with 2 popular testers in 1 unit - featuring a Non-Contact Voltage Detector on one end and GFCI Outlet Tester on the other.

FEATURES:

- 360 degree LED indication
- Loud beeping audible indication
- Exclusive 1 LED readout. No Charts. Instant results
- On/Off button



Part# 99150

AC SPLITTER

The AC Splitter features a receptacle and GFCI tester as well as the ability to measure the current through the measuring rings.



Features:

- Voltage measurement ring
- Current measurement ring (x10 and x1)
- GFCI button
- Socket connection indicators
- Current maximum: 15A
- Input voltage: 120V



Part# 99020

MAGPIE

Bilateral Laser Measurer

Part #45600

FIND THE CENTER OF A ROOM FOR EASY LIGHT INSTALLATION



7FT

9FT



Before



PIE - WHO SAID
PIE??

PUT THE ICE CREAM
AWAY! IT'S NOT THAT
KINDA PIE.

BACK BY POPULAR DEMAND!

LADDER MATE

MULTI-USE LADDER ORGANIZER

TOOL HOLDER & PAINT TRAY WITH ADJUSTABLE DIVIDERS

- EASY TO ATTACH
- ADAPTER CLIPS INCLUDED
- WORKS WITH MOST FIBERGLASS, ALUMINUM & WOOD STEP LADDERS

SEE IT IN ACTION HERE!

**Tools sold separately
Part# 65300*

STEPDEK

A MUST HAVE TOOL FOR ANYONE WHO WORKS ON LADDERS!

The Stepdek easily attaches to the ladder rung which provides a wider platform for users to stand on.

PRODUCT FEATURES:

- Helps prevent ladder fatigue
- Provides a safe & comfortable step to stand on
- Durable aluminum design

Rubberized non-slip comfort pad
Light weight & fits in tool bags
Easily attaches to most A-frame ladder
Reusable
A portion of each sale is donated to help those in need

New Product!

Aerial Tool Bin

The Aerial Tool Bin offers a safe and efficient way of storing your tools at waist height while on a variety of Man-Lifts. It is designed to be used on: Aerial Platforms, Scissors Lifts, Boom Lifts, Scaffolding, Swing Stage Railings, and Mast Climbers.

Part# ATB1312

STAPLESHARK

FEATURES:

- Includes a handy staple puller and pry bar for multi-purpose use!
- Ruler for quick on the job measurements.
- Use as a quick carpenter's square.
- Holds staples in tight spots and will open a beer bottle at the end of

SEE IT IN ACTION HERE!

Part# 52455

STAPLE PULLER! **HOLDS STAPLES!** **PRY BAR!** **RULER!** **BEER OPENER!**

CROC'S

NEEDLE NOSE WIRE STRIPPERS

Sometimes referred to as the best wire strippers on the market, the Croc's Needle Nose Wire Strippers will impress even the toughest critics. These strippers have countless features, each designed to make your job easier and more productive.

FEATURES:

- Glow in the dark handles
- Ergonomic handle design for maximum comfort
- Needle nose tips
- Strip from 22-10 AWG
- Barrel Sleeve Crimper
- NMSC cutter near the "nose" of the stripper
- 8-32 and 6-32 bolt cutters

Part# 47000

SEE IT IN ACTION HERE!

Needle nose pliers
Strong wire cutters
6-32 and 8-32 screw cutter
14/2 and 12/2 NMD stripper
Strips from #10 - 22 AWG
Quick crimper
Glow in the dark tipped handles

CROC'S Jr.

Introducing the Croc's Jr., A compact and lightweight version of the original. This model serves as an affordable predecessor to the original without skimping on its numerous applications.

FEATURES:

- Glow in the dark handles
- Ergonomic handle design for maximum comfort
- Compact design
- Strip from 22-8 AWG
- 8-32 and 6-32 bolt cutters

Part# 47002

Needle nose pliers
Strong wire cutters
Glow in the dark tipped handles
Strips from #8 - 22 AWG
6-32 and 8-32 screw cutter

SEE IT IN ACTION HERE!

V-CUTTER

ELECTRICIAN'S ADD-ON CABLE STRIPPER

STRIPS CABLE IN OR OUT OF ELECTRICAL BOXES WITH EASY TO PUSH ACTION

One of the smartest inventions to come to market this decade is the V-Cutter. This simple little blade attaches to most wire strippers and allows you to strip cable with a single swipe.

FEATURES:

- A new way to strip NMSC cable
- Easily attaches to most wire strippers
- Strips cable in or out of electrical boxes with action
- Virtually eliminates nicking or cutting the wire insulator

Part# 47010

PANEL BUDDY

KNOCKOUT SYSTEM

Tired of trying to remove knockouts? Let the Panel Buddy take care of them for you. This simple but genius tool removes knockouts in half the time, with half the effort.



FEATURES:

- Kit removes knockouts on Electrical, Security, Alarm, and Datacom Panels
- Works with lipped and non-lipped panels



Part# 7WBK100

Tie Lips

Spend more time installing and less time picking up. The Tie Lips will hold your cable ties conveniently on your belt.

Features

- Keeps your ties in place
- Quick and easy dispensing
- Holds different types and sizes
- Includes handy belt clip



Part# 43800

NUT BLASTER

UNIVERSAL WIRE CONNECTORS

- Fast, easy installation
- Prevents sore fingers and cramping hands
- Available in two sizes

Part#

72101 - XL

(Fits all brands yellow, tan & red twist on wire connectors)

72102 - XXL

(Fits all brands large grey & blue twist on wire connectors)



NUT BLASTER

In-Store Display

Contact us to order this counter display. Other counter displays also available.

Part# 67119

SLUGGOX

THE SLUGGO-OX IS THE ULTIMATE GROUND ROD DRIVING TOOL.

Just one piece and incredibly strong. It delivers the kind of power and strength you need to easily install ground rods, rebar, & other metal objects.



"I THINK IT'S TIME WE GOT A SLUGGO-OX!"

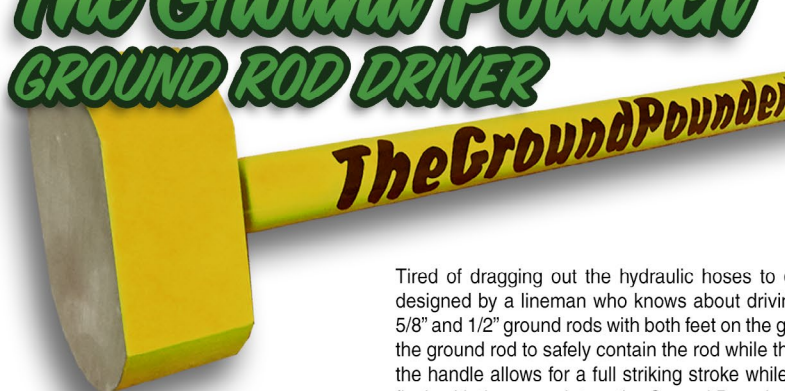
FEATURES:

- Incredibly strong: made of 3" hot-rolled, heat-treated, hardened steel
- 3 1/2" bore to accept 3/4" and 5/8" ground rods
- 80% more striking surface
- Yellow zinc chromate surface to deter rust



The Ground Pounder

GROUND ROD DRIVER



- Weight: 18 lbs.
- For use on 5/8" and 1/2" Ground Rods
- Safe and easy to use
- No more dragging hydraulic lines

Tired of dragging out the hydraulic hoses to drive a ground rod? The Ground Pounder™ was designed by a lineman who knows about driving ground rods. Quickly and safely drive standard 5/8" and 1/2" ground rods with both feet on the ground. The Ground Pounder™ handle slides over the ground rod to safely contain the rod while the weighted end drives the rod down. The length of the handle allows for a full striking stroke while the weight does all the work. Once the handle is flush with the ground, turn the Ground Pounder™ over and use the flat end to finish the drive.

Part# 67150



CLIP WHACKER

THE CLIP WHACKER IS SPECIFICALLY DESIGNED FOR HAMMERING IN CLIP ON BEAM CLAMPS. STOP SMASHING YOUR FINGERS, USE A CLIP WHACKER.

- Fits 1/8-1/4" flange thickness clips
- Much safer
- Doesn't take up much space in tool bag (just like another screwdriver)
- No more flying clips!!
- No more hammering fingers!!
- Work smarter not harder
- MADE IN USA



Part# 54100

MAG DADDY

MAGNETIC FASTENERS



MAG DADDY MAGNETIC FASTENERS UTILIZE ULTRA-STRONG MAGNETS TO STRAP WIRE AND CABLE. MAG DADDY MAGNETS WILL STAY ATTACHED THROUGH OIL, GREASE, PAINT OR DIRT. A VARIETY OF CONFIGURATIONS ARE AVAILABLE TO SUIT YOUR NEEDS.

CABLE HOLDERS



Magnetic Cable Holder (10 Pack)
Part# RM050BK - 1/2" Black
Part# RM050WT - 1/2" White
Part# RM075BK - 3/4" Black
Part# RM075WT - 3/4" White
Part# RM100BK - 1" Black
Part# RM100WT - 1" White

CABLE TIE MOUNTS



Magnetic Cable Tie Mount (10 Pack)
Holds Standard Zip Ties
Part# RM110BK - 10 lb Black
Part# RM110WT - 10 lb White
Part# RM115BK - 15 lb Black
Part# RM115WT - 15 lb White

MAGNET MOUNT



Magnet Mounts (10 Pack)
Part# RM164SL - 19 mm/16 lb Silver
Part# RM265SL - 23 mm/26 lb Silver
Part# RM266SL - 26 mm 26 lb Silver



Magnetic Clamp (10 Pack)
Magnetic Strength: 15 lbs.
Part# RM051BK - 1/2" Black



Female Magnet Mount
1/4-20
Part# RM420FM



3/4" Wide Cable Mount (10 Pack)
15 lbs Black
Part# RM215BK



Mini Magnet Cable Tie Mount (10 Pack)
Color: Black
Magnetic Strength: 5 lbs
Part# RM020BK



Top J-Hook (10 Pack)
360° Rotation
Part# RMJ075T - 3/4"
Part# RMJ131T - 1 5/16"
Part# RMJ200T - 2"



Side J-Hook (10 Pack)
360° Rotation
Part# RMJ075S - 3/4"
Part# RMJ131S - 1 5/16"
Part# RMJ200S - 2"



Cable Hanger
Cable Hanging Tool
Part# RM300HT



Magnetic Bridle Ring
Part# RM125BR - 1.25" 1/4-20
Part# RM200BR - 2" 1/4-20



1 x 7/16" Zip-Tie Pipe Mount
Part # RM1716BK

VAN MAGNETS

Got a disorganized van? Snap some Van Magnets into place to hang tools, material, etc. to keep your vehicle nice and tidy.



*All Van Magnets Include carabiner



10 lbs 4 Pack
Part# RV010



25 lbs 3 Pack
Part# RV025



50 lbs 2 Pack
Part# RV050



CABLE MOUNTS

The Rack-A-Tiers Saddle Support is a saddle where you put a screw through an d strap wire with tie wraps. Let's be honest, Rack-A-Tiers didn't reinvent the wheel with this one, but we did reinvent the price.

Another exciting, already available product we're adding are the 4-way adhesive cable tie mounts in 2 different sizes. You know what these are for. Buy them from us if you would like to.

Part# RC215WT

Cable Tie Saddle Support White
1.5" (100 pcs)

Part# RC4150W

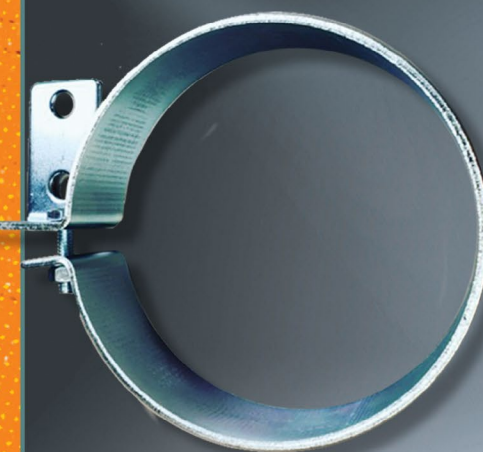
Cable Tie Mount 4-Way Adhesive White
1 1/2" (100 pcs)

Part# RC410WT

Cable Tie Mount 4-Way Adhesive White
1" (100 pcs)



CHASE STRAP CONDUIT BRACKET



The Chase Strap secures the short piece of conduit extending from one room to another through a sheetrock wall or other barrier such as a concrete riser. The strap is made from galvanized steel and is available in multiple sizes.

Part#
RCS100 - 1" Chase Strap
RCS200 - 2" Chase Strap
RCS400 - 4" Chase Strap



UL Listing E507150



Winnie Industries
MANUFACTURER OF FASTENING SUPPORTS



MAGNETIC CABLE TIE MOUNTS



16 LB Magnetic
Cable Tie Mount - UV Black
Part# RMW016BK



16 LB Magnetic
Cable Tie Mount - UV Black
Part# RMW016WT



26 LB Magnetic
Cable Tie Mount - White/Natural
Part# RMW026WT



26 LB Magnetic
Cable Tie Mount - UV Black
Part# RMW026BK



26LB Magnetic
1 inch wide, Grip Tape Mount - UV Black
Part# RMW226BK

MAGNETIC BRIDLE RINGS



26 Lb Magnet
3/4" Magnetic Bridle Ring, Small Standoff, Zinc Plated
Part# RMW075BR



100 Lb Magnet
1 1/4" Magnetic Bridle Ring, Small Standoff
Part# RMW125BR



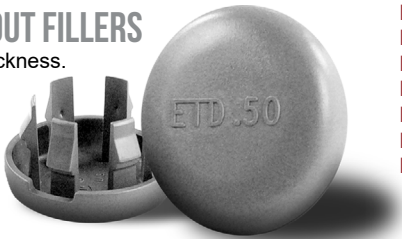
100 Lb Magnet
2" Magnetic Bridle Ring, Small Standoff
Part# RMW200BR

FILLERS & CONNECTORS

KO KILLERS: PLASTIC KNOCKOUT FILLERS

Fits thin (1/32") and thick (1/8") wall thickness.

- Features:
- No tools required
 - Snap in and out with ease
 - Non-conductive, safer



- Part# KOK50 - 1/2" Filler (50/bag)
Part# KOK75 - 3/4" Filler (50/bag)
Part# KOK100 - 1" Filler (25/bag)
Part# KOK125 - 1 1/4" Filler (25/bag)
Part# KOK150 - 1 1/2" Filler (25/bag)
Part# KOK200 - 2" Filler (25/bag)
Part# KOK999 - Assorted Fillers Kit (25/bag)



RAT 500

Rapid Fire NMSC connector (100 Pack)

Suitable for all 1/2" knockouts
Fast and Easy. No tools required

- Features:
- 100/bag
 - Single cables
 - Two cables
 - Install from outside

RAT 750

Rapid Fire NMSC connector (50 pack)

Suitable for all 3/4" knockouts
Fast and Easy. No tools required

- Features:
- 50/bag
 - Single cables
 - Install from outside



- Part#
RAT500 1/2" Connector
RAT750 3/4" Connector

RAT750 - 3/4"	Single Cable:	8/3, 6/3
RAT500 & TT500 - 1/2"	Single Cable:	14/2, 14/3, 12/2, 12/3, 10/2, 10/3
	Two Cables:	14/2, 14/3, 12/2

TT500

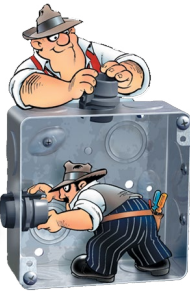
NMSC Two Way 1/2" Connector (100 Pack)

Installs from inside and outside the box

- Features:
- 100/bag
 - Single cables
 - Two cables



- Part#
TT500



STUD BUDDIES

(100 Pack)

Why Square Bushing? 70%
More cross sectional area!
More cables, easier pulls.

- One piece
- One hand installation
- Fits all standard steel studs & punches
- Fire rated V.O.
- Faster, easier to use

- Part#
SB220 - ROUND
SB240 - SQUARE



BUCKETS

Our same great connectors now available in bulk bucket form!

Part#'s

- RAT500.B2 – 1/2" Connector Qty. 200
RAT500.B4 – 1/2" Connector Qty. 400
TT500.B2 – 1/2" Tom 2-Way Connector Qty. 200
TT500.B4 – 1/2" Tom 2-Way Connector Qty. 400



LEVEL JACK

HOW DOES IT WORK?

Alignment tabs reach across wood/metal studs to level low voltage outlets with A.C. boxes.

NO TAPE MEASURE • NO LEVEL REQUIRED

Available in 1/2" and 1" rise

If you're fussy about your rough-in layout, the Level Jack makes life easy. If you're not, no one will notice because you can't screw up with the Level Jack.

Just clip it on to the AC box and screw it down. No level, no tape measure, no special boxes, no special fittings required. Level Jacks fit most AC boxes.



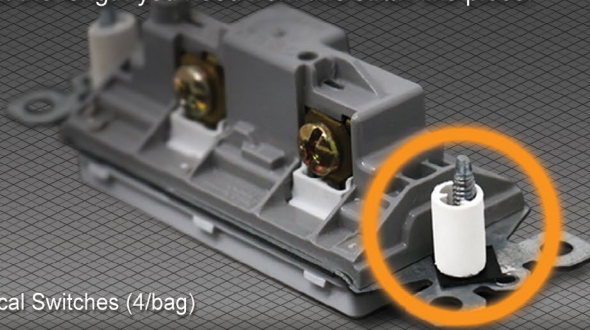
- Part#
LJ50R - 1/2" (30 pack)
LJ100R - 1" (15 Pack)



SHIM MY BOX

Part# S1203
9" Length Tubes for Electrical Switches (4/bag)

Tired of twisting wire into a coil or trying to track down washers to shim your plug or switch? With the Shim My Box all you have to do is cut the length you need from this straw like piece.



AIRCRAFT CABLE & WIRE CRIMPS

- Available in 500 and 1,000 Feet.
- No need to go anywhere else - Buy it from us!
- Diameter of cable: 1/16"

Part# SC500
Aircraft Seismic Cable 500'
Part# SC1000
Aircraft Seismic Cable 1000'
Part# SCC116
Aircraft Seismic Cable Crimps (100 pack)



Features:

- Quickly and easily supports multiple electrical cables.
- Hold up to 24 cables with one support.
- Greatly reduces labor time.
- Innovative design allows multiple cables to be installed in confined areas with ease.
- Rigid plastic injection molded
- US Patent Pending
- Made in the USA

H2 Homer Helper's are intended to support multiple NM-B, MC, and Low Voltage cables in electrical home runs. They will greatly reduce labour time and eliminate the use or need for staples.



Part# H2024

Width: 20.5cm
Height: 14cm
Base: 7.5cm



CABLE CHASE

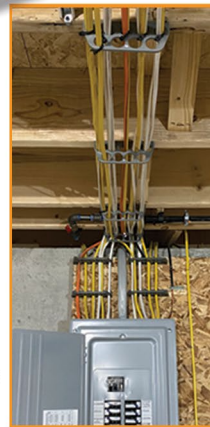
The Cable Chase is designed to provide a straight, clean path for wires with no obstructions. The brackets allow you to greatly reduce friction and stress on wires being pulled through the holes due to the hole design.

SEE IT IN ACTION HERE!



- ULC Listed
- Patented design
- Accepted by IEAI
- Follows the same guidelines as typical wire fill calculation
- Leaves room for future expansion

Part#
CC9024 - Cable Chase Single
CC9024.P10 - 10 Pack
CC9024.Bulk - 100 Pack



CROWS FEET
3/8" Metal Flange

Crow's Feet are a galvanized steel ceiling flange designed to accommodate 3/8" threaded rod.



*100 per box
Part# SCF38

COUNTERTOP BOXES

FLOOR BOXES



Rack-A-Tiers pop-up boxes offer a sleek and compact design and are a great option for installing a pop-up outlet into a countertop or floor. Pops up while in use and is out of the way and flush when pushed down.



SQUARE COUNTERTOP POP-UP BOXES

SQUARE COUNTERTOP POP-UP PLATE ASSEMBLY WITH 20 AMP GFI RECEPTACLE

STAINLESS - PART# VPU.SS.PB
BLACK - PART# VPU.BK.PB
BRASS - PART# VPU.BR.PB
WHITE - PART# VPU.WT.PB



SQUARE COUNTERTOP POP-UP PLATE ASSEMBLY 20 AMP W/2 USB

STAINLESS - PART# VPU.SS.2USB.PB
BLACK - PART# VPU.BK.2USB.PB
BRASS - PART# VPU.BR.2USB.PB
WHITE - PART# VPU.WT.2USB.PB

NEW DESIGN

DESKTOP TOWER POP-UP OUTLETS

The tower pop-ups are available in multiple configurations and colours. Please visit our website for more information and part numbers.



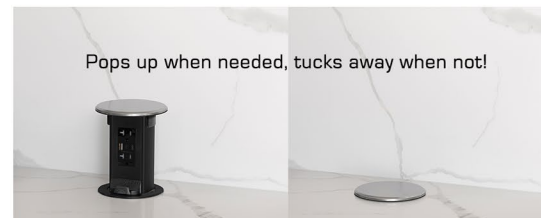
*Wireless charging units available



*120V male cord end attached on all models.



Pops up when needed, tucks away when not!



SQUARE FLOOR POP-UP BOXES WITH SLIDE BUTTON

SQUARE POP-UP FLOOR PLATE ASSEMBLY WITH 20 AMP GFI RECEPTACLE

STAINLESS - PART# VFPU.SS.GFI
BRASS - PART# VFPU.BR.GFI



SQUARE POP-UP FLOOR PLATE ASSEMBLY WITH 15 AMP W/2 USB

STAINLESS - PART# VFPU.SS.2USB
BRASS - PART# VFPU.BR.2USB

SQUARE POP-UP FLOOR PLATE ASSEMBLY WITH 15 AMP

STAINLESS - PART# VFPU.SS
BRASS - PART# VFPU.BR

SQUARE FLOOR POP-UP PLATE ASSEMBLY INCLUDE VPU.WB WOOD ENCLOSURE BOX. CONCRETE BOX SOLD SEPARATELY - PART# VPU.CB

ASSEMBLED FLOOR BOXES

PLASTIC QUICK INSTALL FLOOR BOXES



HINGED SINGLE GANG
ALUMINUM - PART# VRHC.AL
BRASS - PART# VRHC.BR



HINGED ROUND
ALUMINUM - PART# VRHB.AL
BRASS - PART# VRHB.BR



MEDALLION SINGLE GANG
ALUMINUM - PART# VRMC.AL
BRASS - PART# VRMC.BR



MEDALLION ROUND
ALUMINUM - PART# VRMB.AL
BRASS - PART# VRMB.BR

*NOT TO BE USED IN CONCRETE

ROUND FLOOR BOXES

ROUND FLOOR POP-UP PLATE ASSEMBLY WITH 15 AMP DECORA

STAINLESS - PART# VPU.FD.SS
BRASS - PART# VPU.FD.BR

ROUND FLOOR POP-UP PLATE ASSEMBLY WITH 15 AMP GFI

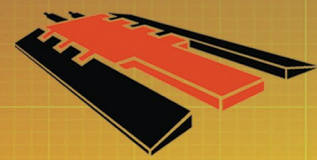
STAINLESS - PART# VPU.FB.SS
BRASS - PART# VPU.FB.BR

ROUND FLOOR POP-UP PLATE ASSEMBLY WITH 6 DATA PORTS

STAINLESS - PART# VPU.FC.SS
BRASS - PART# VPU.FC.BR



ROUND FLOOR POP-UP PLATE ASSEMBLIES DO NOT INCLUDE ENCLOSURE BOX. WOOD BOX, PART# VPU.WB AND CONCRETE BOX, PART# VPU.CB, SOLD SEPARATELY.



ELASCO PRODUCTS



EXTREME CABLE PROTECTION

DURABLE

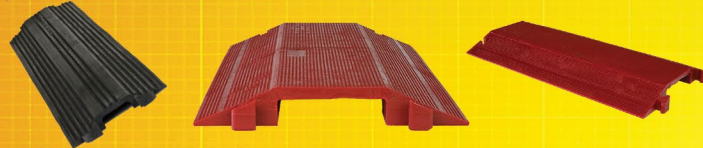
LONG LASTING

LIGHTWEIGHT

EASY TO USE

DROP OVER COLLECTION

Elasco Drop Overs are quick and easy to install, protecting everything from small wires to large pipes. These cable management Drop Overs come with a single channel, but can accommodate a multitude of pipes or wires within their protection.



GLOW COLLECTION

Elasco now offers the most visible glow in the dark cable protectors in the industry.



LITEGUARD COLLECTION

Commonly used in vehicle or pedestrian settings, the LiteGuard collection provides invaluable protection. Although smaller in size and weight, these products are still designed for significant load bearing strength.



ULTRAGUARD COLLECTION

The Ultraguard collection offers an extra low profile and push buttons attached to lid, ensuring extra lid closure and cable security.



HEAVY DUTY COLLECTION

The Heavy Duty collection has been protecting cables and wires for over 25 years and is available in one, two, three, and five channel cable guards. Offering extra load bearing capacity, compared to the lighter duty - the MightyGuard collection will stand the test of time.



XTREME DUTY COLLECTION

The XtremeGuard Collection offers multiple channels able to accommodate 4" size hoses, cables, and pipes. With bonus 2" size channels, this patent pending design is the first and only product like it on the market, able to withstand almost any load capacity requirement.



FOR FULL SIZING CHARTS, PART NUMBERS AND MORE INFORMATION PLEASE VISIT RACK-A-TIERS.COM



FEATURES:

- Articulation pieces offer flexible design - curves, corners & s-curves are easily made while maintaining a completely flat profile.
- Simple installation. No tools required.
- Available in black, yellow, brown, and gray.
- Fully-customizable length - From 4.5" to an unlimited length.

For part numbers visit Rack-A-Tiers.com



The Temporary Cable Guard withstands heavy vehicle traffic without damaging cable. Easily anchored with concrete screws if needed. The Temporary Cable Guard helps you restore services quickly by allowing you to run temporary cables over most any surface. It reduces truck rolls and eliminates downtime due to cable cuts, storm damage, traffic or roadway activities.

For part #s visit Rack-A-Tiers.com



CableClear is a patented new cable management product for wall mounted TV's enables you to quickly and easily hide eyesore TV cables inside the stud wall without any special DIY skills. Add cables seamlessly at any point and time after the CableClear kit is installed. CableClear creates a 50mm (2") conduit inside the wall cavity so that you can fish the cable through and hide them completely. There is no damage to the wall during cable installation so there's no repairing or re-painting afterwards.



FEATURES:

- Kit includes: elbow wall clips, hose, hole saw, plumb bob, and nose cone
- Designed for all stud walls 70mm (2 3/4") and thicker
- Fits plaster/drywall up to 13mm (1/2") thick
- Hose length is fully adjustable
- Additional cables can be added later
- Creates a sealed duct
- Components comply with UL 94V-0 plastics flammability standards

CC001 - Cable Clear Kit
CC002 - Cable Clear Extension Kit
CC003 - Replacement Part -Elbow Fitting
CC004 - Replacement Part - Hose w/ Connectors

CC005 - Replacement Part - Hole Saw
CC006 - Replacement Part - Plumb Bob
CC007 - Replacement Part -Insulation Cone



TEMP-IT

Features:

- Fits in most residential LED recessed cans
- Uses A-19 Medium Base LED light bulb only
- Sold in boxes of 12 (lamps not included)



Part# 99050

"TEMP IT" is a product designed for temporary lighting for LED recessed can installation. This temporary lighting socket allows for immediate, convenient lighting during construction without using the costly led trims. "Temp IT" fits in most residential led recessed cans. Just plug the orange LED socket into your LED recessed can and attach an A-19 medium base led light bulb. Messy supplemental cord lighting and big stand up halogen lamps are no longer a necessity.



PROLOCK

For Secure & Safe Connections

Single End Extension Cord

- Molded ProLock connectors will not pull away from the cord body; offers extra water resistance.
- Automatic locking feature: insert male end into Pro Lock connector and push together to lock. Pull collar down to unlock.
- High impact polycarbonate on both housing & collar guarantees hard service, with extra heavy duty use.
- Lighted Amber Power Check plug & ProLock connector indicates power is running through the cord and connector.
- Special cold weather (-58°F) PVC jacket guarantees flexibility in temperatures well below freezing



Part#
98000 - ProLock Cord Connector Black
98050 - ProLock 50' 12/3 Extension Cord
98100 - ProLock 100' 12/3 Extension Cord

Extension Cord Connector

- Specially designed automatic locking feature: insert male blades and pins into the Pro Lock connector and push together to lock; pull the collar down to unlock.
- We use high impact polycarbonate on both housing & collar to guarantee hard service, extra-heavy duty use.
- Temperature Range: -40°F to +160°F.
- Pull Strength: 80 Lbs horizontally or vertically.

Our patented ProLock mechanical connector was designed to prevent all extension cords with standard straight blade 15A-125V plugs and connectors from pulling apart. It eliminates the problem of accidental disconnects that result in unnecessary power loss. Fits all standard 15A-125V U-Ground ends.



EFERGY ELITE Classic Wireless Energy Monitor

Part# EF003



SAVE UP TO 15% ON YOUR ELECTRICITY BILL THROUGH GREATER AWARENESS!

The Elite Classic is our latest and renewed version of our Elite Wireless Power Monitor. It updates every 10 seconds so you can instantly see the impact of turning a light on or off, boiling the kettle or using your tumble dryer. It has an innovative memory function that allows you to see how much you have used today, yesterday and in the last week or month. The Elite Monitor also displays your daily average so you can see when you are using more electricity than normal and see how your average usage reduces as you change the way you do things - Great for sub panels to monitor tenant energy use.

Accessories

200A Current Sensor

Additional sensor for measuring current up to 200 amperes. Works with the elite or e2. Perfect for whole house applications where a 200 ampere service is installed. Split core design easily fits around wire sizes up to #4/0 AWG without breaking connections.

Part# EF012



Hub Online Accessory Kit

Monitor your home energy use online in real-time engage hub accessory kit. Online platform FREE of charge with no subscription or monthly fees Access your energy data anytime, from anywhere

Part# EFH01



E-MAX ENERGY MONITOR



Introducing the E-Max energy monitor from Efergy! This improved energy monitor features a stylish, large 7.9" display and improved battery life. View your energy data in real time with the easy to understand display and energy use speedometer. The E-Max also includes a USB-2.0 port to download your energy consumption data.

Kit Includes: E-Max Display, (2) CT Sensors and the Transmitter

Features:

- See your current energy use with a color-coded speedometer
- Look up historic data: yesterday, last week, last month, etc.
- Input your higher kW rate period to make sure you are not using high energy appliances, etc. at peak times
- Portable unit allows you to walk around the house to monitor usage
- Sleek free-standing stand or wall mounted display
- Download your energy data using a USB stick

Part# EF005

WE HAVE THE POWER TO FIND YOUR MONITORING SOLUTIONS
WE WANT TO COVER ANY SCENARIO YOU CAN THINK OF. THIS EXPANDING CATEGORY IS ON THE UPSWING, LET US HELP YOU FIND THE RIGHT DEVICE.



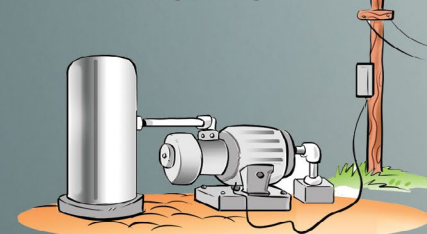
SUITES



MOBILE HOME PARK



EW STATIONS



REMOTE LOADS



FARMS



SOLAR

CIRCUIT IQ

STOP GUESSING, START MAPPING

Know Your Power with Circuit IQ:

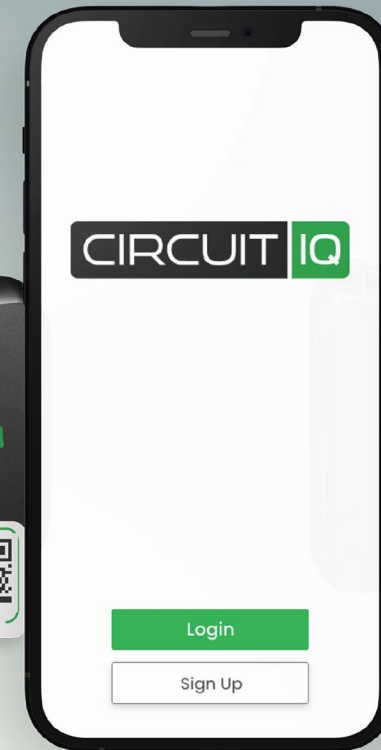
- ✓ 100% Accuracy
- ✓ Test from Any Distance
- ✓ Map Multiple Circuits Simultaneously

SEE IT IN ACTION HERE!



99400 - Startup Kit

9 Mappers, Wireless Gateway, Wireless Label Printer, Commercial Carrying Case



99405 - Mapping Expansion Kit
30 Mappers

This is NOT Your Father's Breaker Finder

Able to locate more than one breaker at a time, it can map entire power systems fast. Tracing power on multiple circuits at the same time from any distance, accurately. It automates electrical system labelling and electrical panel directory creation, so you are not manually doing all of that work.

What are you powering? Where are you powering it from? What loads are on the same line? Is there extra room for additional loads? How do I kill power quickly? These are just some of the questions it can answer for you. Filter through breakers quickly with keywords like the room/floor, appliance, or equipment name using our search bar. Understand legacy buildings like you understand new builds. Get ahead of your competition, know your power!

Introducing,

CIRCUIT IQ

THE TOP HAT



As a simple box cover, the Top Hat is used instead of a blank cover with several important advantages. It allows installers to leave wires that enter the junction boxes extending straight. With the depth of the Top Hat there is no need to coil wires and stuff them into the smaller parts of the junction box. This will save time during installation and more importantly during troubleshooting. Additionally, this high volume cover makes it easier to access the contents of any junction box.

Now Available For special order in multiple colors for various applications. Contact Rack-A-Tiers for more details.

Part#'s
TC1400-5 - Top Hat 5 Pack
TC1400 - 50 Pack

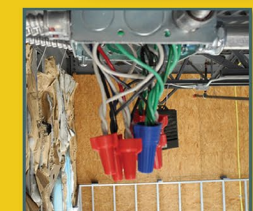


SEE IT IN ACTION HERE!



FEATURES

- ULC Approved
- Adds 35.8 cubic inches to the existing junction box
- Plenum Rated
- *Patent Pending



BEFORE



AFTER

Rack-A-Tiers

COMPLETE LINE OF Driver Bits

PART#	DESCRIPTION	LENGTH
70226BR	Impact Bit, Double-Ended, Phillips #2 & Robertson #2 (Blue/Red)	6"
70224BR	Impact Bit, Double-Ended, Phillips #2 & Robertson #2 (Blue/Red)	4"
70216RG	Impact Bit, Double-Ended,Robertson #2 & #1 (Red/Green)	6"
70214RG	Impact Bit, Double-Ended, Robertson #2 & #1 (Red/Green)	4"
70126GB	Impact Bit, Double-Ended, Robertson #1 & Phillips #2 (Green/Blue)	6"
70124GB	Impact Bit, Double-Ended, Robertson #1 & Phillips #2 (Green/Blue)	4"
7032RI	Robertson Impact Bit, Square #3 (Black)	2"
7031RI	Robertson Impact Bit, Square #3 (Black)	1"
70266R	Robertson Impact Bit, Robertson #2 (Red)	6"
70244R	Robertson Impact Bit, Robertson #2 (Red)	4"
7022RI	Robertson Impact Bit, Square #2 (Red)	2"
7021RI	Robertson Impact Bit, Square #2 (Red)	1"
70166R	Robertson Impact Bit, Robertson #1 (Green)	6"
70144R	Robertson Impact Bit, Robertson #1 (Green)	4"
7012RI	Robertson Impact Bit, Square #1 (Green)	2"
7011RI	Robertson Impact Bit, Square #1 (Green)	1"
70266B	Impact Bit, Phillips #2 (Blue)	6"
70244B	Impact Bit, Phillips #2 (Blue)	4"
70166B	Impact Bit, Phillips #1 (Light Blue)	6"
70144B	Impact Bit, Phillips #1 (Light Blue)	4"
7022PI	Impact Bit, Phillips #2	2"
7021PI	Impact Bit, Phillips #2	1"
7012PI	Impact Bit, Phillips #1	2"
7011PI	Impact Bit, Phillips #1	1"



PART#	DESCRIPTION	LENGTH
70430P	Square #4	3"
70360BK	Robertson Square #3 (Black)	6"
70340BK	Robertson Square #3 (Black)	4"
70260R	Robertson Square #2 (Red)	6"
70240R	Robertson Square #2 (Red)	4"
70230R	Robertson Square #2 (Red)	3"
70220R	Robertson Square #2 (Red)	2"
70160G	Robertson Square #1 (Green)	6"
70140G	Robertson Square #1 (Green)	4"
70130G	Robertson Square #1 (Green)	3"
70120G	Robertson Square #1 (Green)	2"
70040Y	Square #0 (Yellow)	4"
70030Y	Robertson Square #0 (Yellow)	3"
70261BL	Phillips #2 (Blue)	6"
70241BL	Phillips #2 (Blue)	4"
70141LB	Phillips #1 (Light Blue)	4"
72126GR	Drive Bit, Double-Ended, Square #1 & #2 (Red/Green)	6"
72124GR	Drive Bit, Double-Ended, Square #1 & #2 (Red/Green)	4"
72204BY	Double-Ended, Phillips #2 & 1/4" Slot Bit (Blue/Yellow)	4"
72075	Strutter Socket	



Racky Bits Counter Display

Contact us to get a counter display for your Racky Bits. These compact displays are available in two sizes to best suit your needs. Both displays include an anti-theft lid.

12 Slot: Part# 70SKE12
24 Slot: Part# 70SKE24



PART#	DESCRIPTION	LENGTH
70961BK	Hex 1/2" (Black)	6"
70931BK	Hex 1/2" (Black)	2.5"
70861BR	Hex 7/16" (Brown)	6"
70831BR	Hex 7/16" (Brown)	2.5"
70761BL	Hex 3/8" (Blue)	6"
70731BL	Hex 3/8" (Blue)	2.5"
70661Y	Hex 5/16" (Yellow)	6"
70631Y	Hex 5/16" (Yellow)	2.5"
70561R	Hex 1/4" (Red)	6"
70531R	Hex 1/4" (Red)	2.5"
70466RY	Malco Dual-Sided Magnetic Driver, Hex 1/4" & 5/16"	6"
70464RY	Malco Dual-Sided Magnetic Driver, Hex 1/4" & 5/16"	4"
70462RY	Malco Dual-Sided Magnetic Driver, Hex 1/4" & 5/16"	2"
70486YB	Malco Dual-Sided Magnetic Driver, Hex 5/16" & 3/8"	6"

PART#	DESCRIPTION	LENGTH
70484YB	Malco Dual-Sided Magnetic Driver, Hex 5/16" & 3/8"	4"
70482YB	Malco Dual-Sided Magnetic Driver, Hex 5/16" & 3/8"	2"
72564RY	Double-Ended, Hex 1/4" & 5/16" (Red/Yellow)	4"
72000	Magnetic Bit Holder	
72030	Wood Lag Driver Bit	
72022	Magnetic Sleeve	

IMPACT DRIVER SOCKET ADAPTOR SET

PART#	DESCRIPTION	LEN.
70325	1/4", 3/8", 1/2"	2.5"

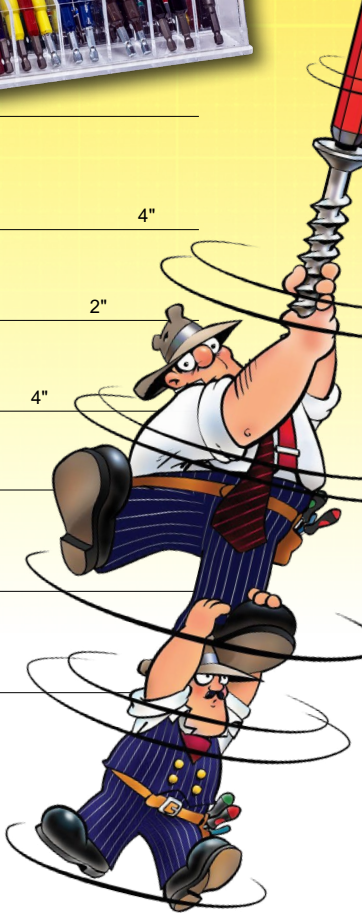
ALLEN HEAD DRIVER BIT KIT

These high quality hex key allen bits are 6" long for increased versatility. Also included in the kit is a 3/8" socket adapter.

The 1/4" shank allows you to use any standard drill or quick change chuck.



PART#	DESCRIPTION
72600	Allen Head Driver Bit Kit



MALCO

DUAL-SIDED MAGNETIC HEX DRIVERS

Part#
70462RY - 2" Red/Yellow
70464RY - 4" Red/Yellow
70466RY - 6" Red/Yellow
70482YB - 2" Blue/Yellow
70484YB - 4" Blue/Yellow
70486YB - 6" Blue/Yellow



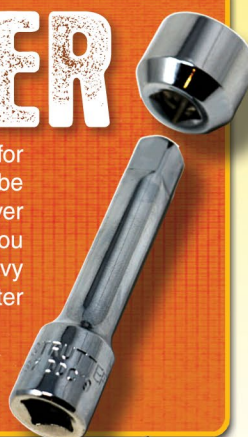
Quickly change between 1/4in. and 5/16in. hex sizes with Malco's unique, exclusive, dual-sided magnetic hex drivers. The reversible hex socket fits over a 1/4-inch magnet-tipped, ball locking hex shaft, and can be quickly reversed to change sizes. Eliminate troublesome buildup of metal shavings in the hex tip with the "Easy Clean Magnet". Just swipe with a glove or shop towel to clear any metal shavings. Tested torque of the reversible hex chuck driver design is equal to one-piece drivers.



THE STRUTTER

Installs 1/2" bolts into electrical strut channel for maximum strength. The Strutter Socket can be turned sideways, put into the strut, then slid over to the 1/2" bolt and tightened up. Before, you could only install the 3/8" bolt, but now, for heavy loads and maximum strength, use The Strutter Socket.

Part# 72075



HOLDSABIT

Every moment during a project that you spend looking for the right tool is wasted time and results in frustration and bad decisions. The ingenious HOLDSaBIT slips on or off a drill in seconds. The HOLDSaBIT will hold any 1/4" hex shank item as well as pencils, nut drivers and hex shank drill bits. Tips and bits are easily inserted and removed.

- Sold in a kit with bits or sold separately.
- Hold any 1/4" hex shank items as well as pencils, drill bits, etc.
- 4 channels to fit a variety of length bits

Part# 70000 (Bits Not Included)

Part# 700.kit (includes 1-70140G, 1-70240R, 1-70241BL, 1-70531R, 1-70631Y & 70214RG)



NoDrop Tools *Be in Control*

Our Screw-Holding Screwdrivers were built to solve the everyday problem of removing/starting screws and not having confidence in our tools. They are made by Technicians for Technicians. These are great for mounting hardware and terminating leads. These are also a must for working with screws where gloves are required but dexterity is needed. When you use our products you will have confidence and "Be in Control".



- The unique design allows you to effortlessly attach to the screw without the worry of dropping it.
- The slim "pen" style fits easily into your pocket.
- The handle and release rod are both made with non-conductive materials.
- Mitigates risk while working in gloves and at heights.

Made In USA

For more information and product numbers visit our web site.



Reemer Bit

Double-Ended #2 Phillips & #2 Robertson Pipe Reaming Bit



- Reams all sizes of conduit
- Tighten your connectors and coupling
- Fits Power Drill chucks and quick release

Part# 72422RB

SHARP ENOUGH EDGES TO
DO THE REAMING BUT WON'T
CUT UP YOUR FINGERS!

SEE IT IN ACTION HERE!



EXTENDO NUT DRIVER



The Extendendo Nut Driver kit is designed to adapt a standard 1/2" conduit into an extension nut driver for threaded rod. Utilizing the concept of a hollow shank nut driver, the Extendendo Nut Driver gives you the flexibility to cut the conduit any length you need to drive the nut up the full length of threaded rod. With this tool on hand, you no longer need to buy multiple size hollow shank nut drivers! Save yourself time and money with this complete extension nut driver kit.

- Kit includes: 7/16", 9/16" sockets, and 1/4" adaptor
- No need to buy multiple hollow shank nut drivers
- Drill attachment designed for 3/8" chuck, will fit quick change drills

- Made from hardened steel
- Adaptable to any length nut driver needed
- Extends up to 10'

Part# NT1050



PICQUIC



SIXPAC plus
- 7 - 3" LENGTH, 1/4" HEX POWERBITS
- 11.5" TOTAL LENGTH
PART# P88001



DASH 7
- 7 - 2" LENGTH, 1/4" HEX POWERBITS
- COMES IN 4 BRIGHT NEW COLORS
PART# P05001



STUBBY
- SOLID, COMFORTABLE, HIGH TORQUE HANDLE
- 6 HIGH QUALITY 1.3" LENGTH INSERT BITS
- IDEAL FOR WORK IN CLOSE QUARTERS
PART# P91000



Robertson



GREEN ROBBY
#5-6-7 SQUARE DRIVE
PART# SD110G



RED ROBBY
#8-9-10 SQUARE DRIVE
PART# SD210R



BLACK ROBBY
#12-13-14 SQUARE DRIVE
PART# SD310BK

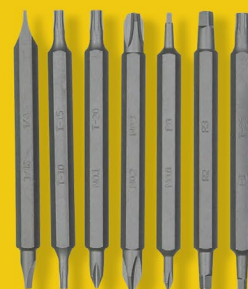


DEMAGNETIZER

MAGNETIZES OR DEMAGNETIZES DRIVER BITS, TOOLS AND SMALL STEEL PARTS INSTANTLY!
Part# 70988

MAGNETIC BIT HOLDER

QUICK CHANGE MAGNETIC BIT HOLDER
PART# 72000



ROLgear

MULTITIP RATCHET SCREWDRIVER / 15 TIPS (DOUBLE ENDED BITS)

- Smooth and silent ratcheting
- Single-handed ratchet adjustments from forward, locked, & backward
- Ergonomic, cushion comfort handle
- Magnetic components for drop-safe bit changing
- Stainless steel bit adapter

- Slotted: 3/16", 1/4"
- Square: 1, 2, 3, 4
- Phillips: 1, 2, 3, 4
- Torx: 10, 15, 20, 25

PART# SDR14



ROBERTSON SCREWS

The Original Robertson screw is the only one that guarantees a perfect “Cling Fit”

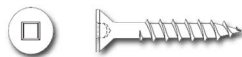


ANCHORS, WASHERS, NUTS & BOLTS



PLEASE
CALL FOR PART
NUMBERS

FLAT HEAD
WOOD SCREWS



PAN HEAD
SHEET METAL SCREWS



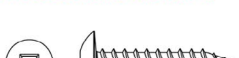
ROUND HEAD
MACHINE SCREWS



CAMTAP®
SELF-DRILLING SCREWS



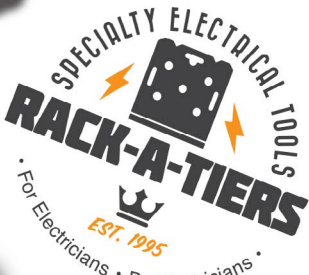
TRUSS HEAD SCREWS



USE THEM WITH
OUR ROBERTSON
DRIVER BITS.



NEVER DROP A
SCREW AGAIN!



ASK YOUR WHOLESALER TO BRING IN ROBERTSON SCREWS FROM RACK-A-TIERS!

ATTENTION ALL WHOLESALERS!

SPRUCE UP YOUR SHOWROOM WITH A GREAT LOOKING DISPLAY FROM RACK-A-TIERS



24" x 48" Paper Wall Panels (2 panels pictured)
Part# WALLPAPER48OR



Rack-A-Tiers Bits Counter Display
Part# 70SKE12

*Tools Not Included



Pouch Display
Part# MINI-DISPLAY-C



H4EMK Display
(Buy 10 to Receive)



Metal Floor Display
Part# METAL-FLOOR-DISPLAY



LADDER SAVER

The Ladder Saver is a simple cover that will extend the life of your ladder and at the same time keep your work area clean and tidy. Tired of UV rays damaging your ladder? The Ladder Saver will protect it.

Customers giving you dirty looks for dragging in mud and snow on your ladder? The Ladder Saver will fix that. The Ladder Saver will be available in 6, 8 and 10 foot sizes. We will also be able to provide custom company branding on the Ladder Saver!

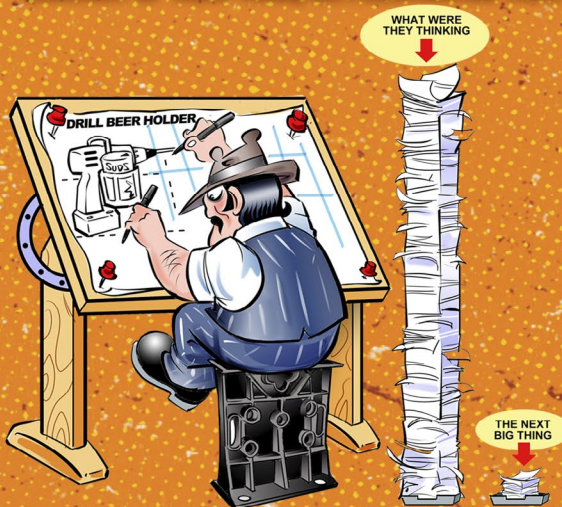


See website for
part numbers.

These products are made to order.
Call 1 (888) 939-9991 for more details

INVENTOR'S CORNER

FIND YOURSELF FLIPPING THROUGH THE RACK-A-TIERS CATALOG WISHING YOU HAD THOUGHT OF THAT TOOL, OR FRUSTRATED THAT YOU THOUGHT OF THAT IDEA FIRST?



Well, here's your chance to put your ideas into action. Rack-A-Tiers launched Inventor's Corner for creative folks like you to pitch ideas and read testimonials from past inventors. Even if Rack-A-Tiers is unable to add your idea to our product line, we have the experience and knowledge to provide advice for your next move as an inventor. Check out the Inventor's Corner at RACK-A-TIERS.COM/INVENTORS and who knows maybe in next year's catalog your product could have a full-page spread.

RACK-A-TIERS.COM/INVENTORS

RACK-A-TIERS CURRENTLY PAYS OUT ROYALTIES TO OVER 30 INVENTORS. ARE YOU NEXT?

NEED A SPECIFIC PRODUCT? WE'LL HELP YOU FIND IT

RACK-A-TIERS HAS OVER 25 YEARS OF EXPERIENCE IN THE ELECTRICAL MANUFACTURING INDUSTRY AND IF WE DON'T HAVE WHAT YOU ARE LOOKING FOR **WE WILL FIND IT FOR**

TEXT: 888-939-9991 OR EMAIL: SALES@RACK-A-TIERS.COM

EZ-ROLL... BIG EZ...
X-DISPENSER... RACK-A-TIERS..
TUG WISE... DONUT DISPENSER...
PIE WINDER.. PIZZA SPINNER

SEARCH
DEPARTMENT



FOLLOW US

@RACKATIERSTOOLS

@RACKATIERS

@RACKATIERS

@RACKATIERS

WHAT'S WITH
THE NEW LOOK?

DIDN'T YOU HEAR?
I'M A SOCIAL MEDIA
INFLUENCER NOW.



NEW TOOLS
 TOOL TALK

WEEKLY GIVEAWAYS
 CONTESTS & MORE

| SALES@RACK-A-TIERS.COM | TOLL FREE: 1.888.939.9991 |