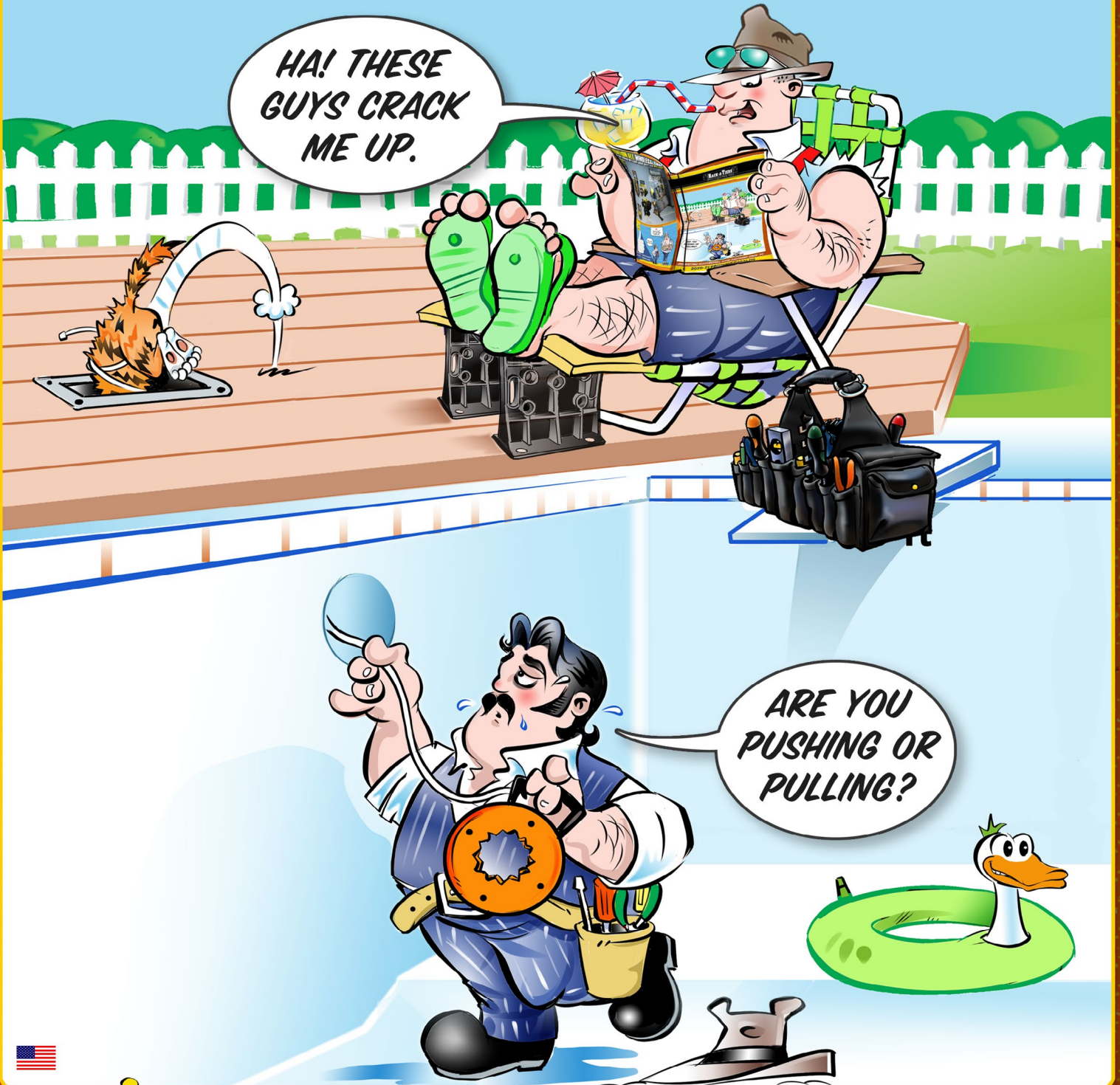


***DISTRACTING ELECTRICIANS WITH CARTOONS SINCE '95***

HA! THESE  
GUYS CRACK  
ME UP.





# TABLE OF CONTENTS

Page	Description	Page	Description	Page	Description
9	4Reel Bracket	16	Flush Pin Shackle	2	Rack-A-Tiers
34	6.5 Blank Plate	26	Fusion Fish Tape	57-58	Racky Driver Bits
44	AC Sensor	16	GD Center Finder	51	RAT500 & RAT750
44	AC Splitter	42	GPS LightLock	8	Reel Mac & Spindles
45	Aerial Tool Bin	48	Ground Pounder	3	Reel-End
52	Aircraft Cable & Wire Crimps	27	Guide Tool	59	Reemer Bit
17	All-American Pull Buddies	29	Guide-O, The	60	Robertson Screwdrivers
58	Allen Head Driver Bit Kit	52	H2 Homer Helper	60	Rolgear Screwdriver
28	Auger - Standard & Tri-Cut	43	Head Light	19	Ropematic Pro
28	Auger Bit File	14	Heat Tank	41	Rough-In Stick, The
16	Bag Pipers	27	High Speed Steel Flex Bits	30	Round Multi-Tool Hole Cutter
43	Bat Flashlight	59	Holdsabit	31	Sharp Pog
12	Bend-All	32	Hole-In-One - Hole Cutters	52	Shim My Box
4	Big E-Z	3	Hooker - Wrench Adaptor	53	Sidewinders
40	Booty Pack	13	Hoppy Bender, The	43	Silver Bullet, The
38	Boulder Bag	58	Impact Driver Kit	48	Sluggo-Ox
20	Breaker Lok	27	Javelin	10	Smart Load 500
12	Bulldog Benders, The	20	Jet Level	39	Snap Sack
28	Bumper Balls	15	Jimbo, The	18	Snatch Strap
39	Butt Pouches	6	JK Stud Reels & Floor Units	20	Solder M8
8	Cable Caddy & Cable Truck	40	Knee Pads	7	Spool Mac
8	Cable Cart & Cable Cart Data	51	KO Killers	45	Staple Shark
52	Cable Chase	45	Ladder Mate	45	StepDek
54	Cable Clear	61	Ladder Saver	43	Stick Bug
50	Cable Mounts	35	Laser Plumb Bob	3	Stick, The
10	Cable Reel Rollers	36	Laserline	18	Sting Ray
7	Caddy Mac #1 & 2	17	LB Wire Guide	59	Strutter, The
29	Carbide Tipped Steel Cutters	51	Level Jacks	13	Stubbees
28	Carbide Tipped Wood Hole Saw Kit	15	Locknut Wrench, The	41	Stud Ball
50	Chase Strap	49	Mag Daddy	51	Stud Buddies Connectors
33	Chip Catcher	36	Magnepull	37	Support Belt
56	Circuit IQ	36	Magnespot	37	Suspenders
48	Clip Whacker	60	Magnetic Bit Holder	27	Switch Bits
37	Combo Tool Belt & Pouches	60	Magnetizer / Demagnetizer	26	Telescopic Rods
29	Co-Pilot	43	Magpie	54	Temp-It
30	Copper Washer	59	Malco Dual Sided Hex Driver	53	Temporary Cable Guard
11	Copper Wire Strippers	22	Mark My Wire	19	The Puck
46	Croc's Needle Nose Wire Strippers & Jr.	29	Multi-Bit Step Drills	5	Thomas Wheeler
52	Crow's Feet	59	NoDrop Tools	47	Tie Lips
54	Davis Multi-Plug	47	Nut Blaster XL and XXL	51	Tom Two-Way Connector
33	Dirt Bag	15	Nut Snugger	37	Tool Carriers
32	Driller's Dust Bowl	28	OverDrive Bits	56	Top Hat Cover
34	Drywall Trapper	47	Panel Buddy Knockout Kit	42	Tracer Wizard
44	Dual Check Non Contact Voltage Tester	16	Penguin Puller Sr & Jr, The	34	Tree Hugger
55	Efergy Products	22	Phase It Right	20	Trunktie
53	Elasco Products	60	Picquic Screwdrivers	9	Tug Wise Standard
31	Electrician's Kit Blades	41	Pipe Spinner	61	Ugly's Electrical Reference Books
55	E-Max Energy Monitor	14	Pipe Vipers	44	Ultimate AC Sensor
40	Exploding Garbage Can	25	Plastic Coated Fiberfish	21	U-Phase Wire Marker
60	Extendo Nut Driver	25	Plastic Coated Glowfish	49	Van Magnets
4	E-Z Roll & E-Z Roll Multi	44	Plug Master	46	V-Cutter
23-24	Ferret, The	35	Poke-E	50	Winnie Magnets
25	Fibersnakes 3/16", 1/4", 1/2", 5/16"	26	Polyester Fish Tape & Cases	6	Wire Pod
43	Fire Fly	38	ProJob Pants & Shorts	4	Wire Reel
18	Fish Heads	54	ProLock	9	Wire Spool Hand Cart
18	Flex Flyers	17	PulLee	5	Wire Tub
16	Flex Puller	30	Q-Bit Drywall Hole Cutter	17	Wire Vortex
		27	Quattro Flex Auger Bits	3	X-Dispenser

MADE IN CANADA  MADE IN USA 

    FOLLOW US ON | [WWW.RACK-A-TIERS.COM](http://WWW.RACK-A-TIERS.COM) | [SALES@RACK-A-TIERS.COM](mailto:SALES@RACK-A-TIERS.COM) | TOLL FREE: 1 (888) 939-9991

The Invention That Started It All:

# RACK-A-TIERS

## ALL-IN-ONE MULTI-USE WIRE DISPENSER

The Rack-A-Tiers Wire Dispenser is the one tool that DOES IT ALL. It's no surprise that we've sold hundreds of thousands of them to electricians everywhere. This genius invention is most commonly used for dispensing wire from spools of various sizes. See for yourself its many other uses!



Part# 11455

## INTERLOCKING PAIRS! VERSATILE! WATERPROOF!



## RUSTPROOF! RELIABLE! RUGGED! EASY TO SET UP!

"We saw another contractor with these and we loved them. You can have multiple spools mounted at a time with various sizes. We have used it for CCTV Siamese cable, speaker cable and alarm cable. They do not take up much room, lightweight and durable."

★★★★★

- Fred

"Simple but effective. It's funny how this simple plastic mold is so useful. It's great. On the package it even mentions other uses I never considered!"

★★★★★

- Lamont

"These were purchased to use for overhead crane service. They have exceeded our expectations"

★★★★★

- Mike

"Where has this been all my life?"

★★★★★

- Noyotas

"Smart design. It's strong, easy to carry, easy to use and very versatile for a reasonable price"

★★★★★

Badbedbug74

"Can fit many application needs like fiber optics cable transfer from one reel to another."

★★★★★

- Frank

"What a great help the cable organizer is. Made my job faster and neater. Thanks again"

★★★★★

- E.D

ONE SIZE RACK-A-TIERS FITS ALL - UP TO: 34" / 0.9M • 330 LBS / 150 KG WIRE REELS



# THE X-DISPENSER

FOLDING WIRE CADDY

## FEATURES:

- Folds to 1" wide to easily fit in your van
- Easy to carry: 1" x 23"
- Holds up to six reels of wire

Maximum spool quantity: 6 reels  
500' of #10 AWG wire  
Maximum spool diameter: 8"  
Max spool width: 9"

Part# 11655

# THE STICK

## STUD MOUNTED WIRE DISPENSER

The Stick installs quickly & easily to any standard stud. Its compact design allows for easy storage once the job is complete.

## FEATURES:

Weight capacity: 200 lbs  
Maximum 15" reel width

Part# 11555

# REEL-END

## REUSABLE SPOOL REEL TOOL

Part# 17455

## FEATURES:

- Pays for itself with the first roll saved and it's reusable
- Organize your wire spools with the reel-end wire spool repair kit
- The Reel-End repairs common plastic spools #10 through #18 gauge.
- 6 1/2" Diameter

# Hooker

## PIPE WRENCH ADAPTER

Part# 10455

The Hooker Pipe Wrench Adaptor lets you turn your Rack-A-Tiers Wire Dispensers into a pipe vise.

## FEATURES:

- Light weight
- Easy to use
- Fast implementation
- Inexpensive
- To be used with an 18" rigid pipe wrench

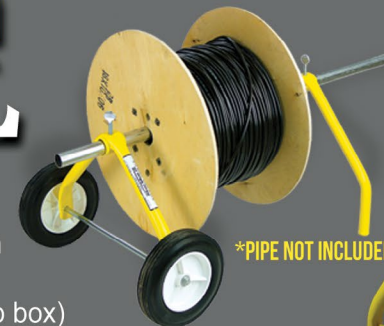
# EZ ROLL

## FEATURES:

- 150 lbs load tested
- Rigid steel construction
- Light-weight design
- Compact (fits in any job box)
- Holds reels up to 24"
- Replacement wheels available

Part# 55455

The E-Z Roll Wire Rack is the ultra compact and collapsible wheeled wire dispenser. When you're ready to pull wire, wheel the E-Z Roll into position and dispense wire directly from your pipe bender or 1" EMT.



\*PIPE NOT INCLUDED

# EZ Roll MULTI

GET THE MOST OUT OF YOUR EZ-ROLL WIRE RACK WITH THE NEW EZ-ROLL MULTI. THIS HANDY ADD-ON EXTENDS THE EZ-ROLL'S USE BY ALLOWING MORE WIRE SPOOLS TO BE ADDED, GIVING IT EVEN MORE FUNCTIONALITY & CAPACITY.



PART# 55456

# BIG EZ

## FEATURES:

- 300 lbs load tested
- Rigid steel construction
- Light-weight design
- Compact (fits in any job box)
- Holds up to 32"

The Big E-Z utilizes the same design and great features as the original EZ Roll while allowing you to dispense larger wire spools.



\*PIPE NOT INCLUDED



Part# 55632

# WIRE REEL

The all new Wire Reel is designed to last a lifetime. It is made of polypropylene which can withstand a normal work environment.

The fastening hardware is all stainless steel and designed for easy setup and removal.

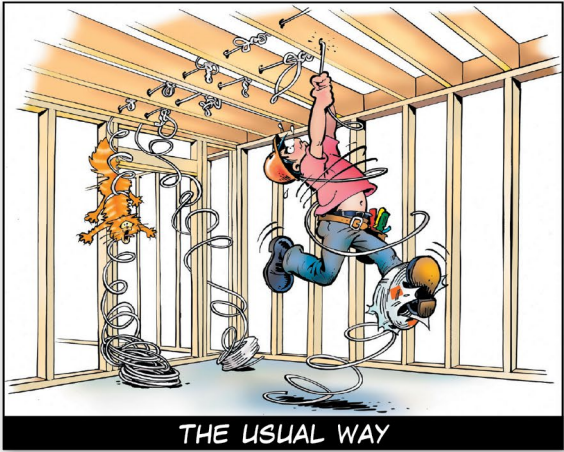
The Wire Reel can be used with a standard 3/4" pvc conduit inserted in the center hole for easy roll out of your wire or cable.

Part# 18475





# THOMAS WHEELER



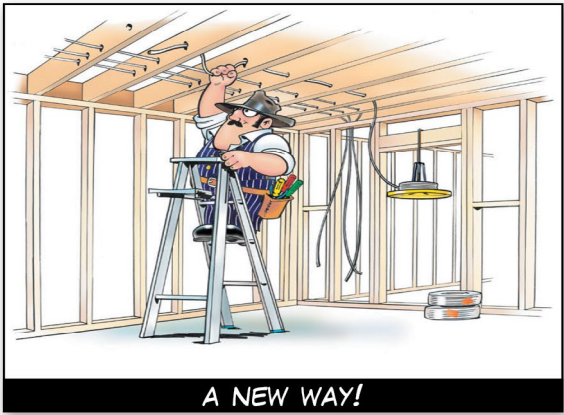
This easy-to-hang wire dispenser allows for fast, twist-free NMSC, MC cable or Flex pulling.

**FEATURES:**

- No maintenance required
- Affordable
- Dependable
- Saves time
- Eliminates waste
- Collapsible
- Holds up to 150 lbs

**MFG NOTE**

Most coil dispensers are too big, cumbersome and expensive. Not this one. The Thomas Wheeler knocks down and sets up in seconds, hangs on a 2x4, in trusses, above tee bars, or on a ladder. Light, simple, rugged, and it really works.



Part# 19455

# WIRE TUB

Part# 18455

The Wire Tub allows you to easily dispense and rewind wire. Don't waste a single foot of wire - rewind it in the Wire Tub and get ready for installation!

**FEATURES:**

- 360 degree feed adjusts automatically for easy dispensing
- 3-way adjustable center hub
- Removable top plate has a handle for rewinding wire!
- Large 24" diameter capacity



# FOLDABLE STUD REELS

**BENEFITS:**

- 21" diameter shock absorbing wire tray
- Capacity: 100 lbs
- Grease retaining spindle gives trouble-free service eliminating maintenance over long periods
- Spindle spring adjusts to desirable free spool
- Designed for 14-2, 14-3, 12-2, 12-3 wire and MC wire
- Rotational wire guide allows pulling in any direction
- Raised edges on wire trays prevent wire spill
- Eliminates twisting and kinking of wire
- Constructed of high grade steel, zinc, and aluminum

- 19FSR24 - Foldable Stud Reel for 2"x4"
- 19FSR26 - Foldable Stud Reel for 2"x6"
- 19FSRC - Foldable Stud Reel for 2"x4" and 2"x6"



# Combination STUD REEL & FLOOR REEL

**BENEFITS:**

- Optional 20" or 25.5" shock absorbing wire tray
- Capacity: 100 lbs
- Grease retaining spindle gives trouble-free service eliminating maintenance over long periods
- Spindle spring adjusts to desirable free spool
- Designed for 14-2, 14-3, 12-2, 12-3 wire and MC wire
- Rotational wire guide allows pulling in any direction
- Raised edges on wire trays prevent wire spill
- Eliminates twisting and kinking of wire
- Constructed of high grade steel, zinc, and aluminum
- Combo unit allows mounting on 2x4 and 2x6
- No open walls? No problem! Use it as a floor reel
- Its quick assembly and disassembly give you more time to focus on the job



- 19CFS20 - 20" Combination Stud Reel
- 19CFS25 - 25.5" Combination Stud Reel

# Heavy Duty STUD REEL

**BENEFITS:**

- 24" diameter wire tray
- Capacity: 150 lbs
- Grease retaining spindle gives trouble-free service eliminating maintenance over long periods
- Spindle spring adjusts to desirable free spool
- Wire guide also serves as a carrying handle
- Designed for 14-2, 14-3, 12-2, 12-3, 10-2, 10-3 and MC wire
- Rotational wire guide allows pulling in any direction
- Raised edges on wire trays prevent wire spill
- Eliminates twisting and kinking of wire
- Constructed of high grade steel, zinc, and aluminum (Some assembly required)

19HDS24 - 24" Heavy Duty Stud Reel

# Heavy Duty FLOOR REEL

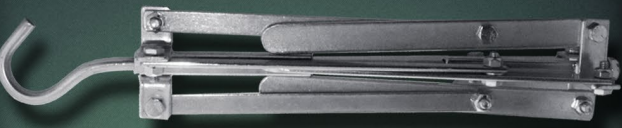
**BENEFITS:**

- 24" diameter wire tray
- Capacity: 150 lbs
- Greased retaining spindle gives trouble-free service eliminating maintenance over long periods
- Spring adjusts to desirable free spool
- Wire guide also serves as a carrying handle
- Designed for 14-2, 14-3, 12-2, 12-3, 10-2, 10-3 and MC wire
- Rotational wire guide allows pulling in any direction
- Raised edges on wire trays prevent wire spill
- Eliminates twisting and kinking of wire
- Constructed of high grade steel, zinc, and aluminum

19HDFR - Heavy Duty Floor Reel



# WIREEPOD



The Wire-Pod is a compact, portable dispenser designed specifically for coils. This handy device will work with NMSC, AC, and Flex coils. With its light-weight design it can easily be stored in any tool bag or work vehicle when not in use.

**FEATURES:**

- Opens for use and folds away for easy storage
- Weighs less than 3 lbs
- Compatible with NMSC, AC and Flex
- Made in USA



Part# 19955



# CADDY MAC 2

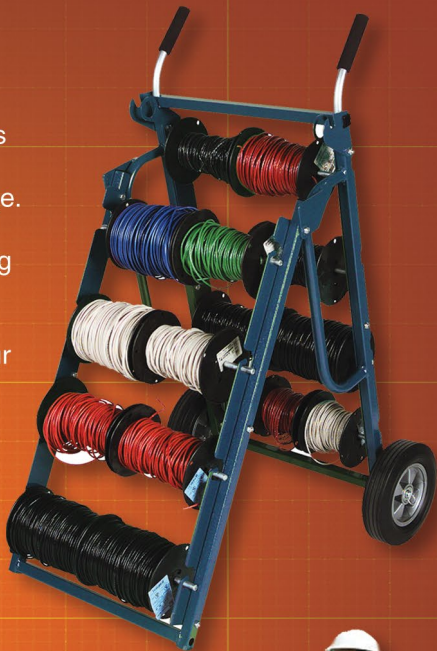
Part# 11902



Caddy Mac #2 holds 16 spools of #10 awg or 24 spools of #12 awg. Hinge design allows easy access to all spools for wire dispensing and folds for compact storage.

Spindles swing out to set position for convenient loading of wire spools.

Inner spindles store in special loops which can hold four pieces and will not fall out during transportation.



Number of Spools	Max Spool Dia	Load Capacity	Weight	Width	Additional Features
16-#10 awg. or 24-#12 awg.	7.5 in 19 cm	400 lbs 180 Kg.	72 lb. 33 kg.	26 in 66 cm	Folds up for compact storage.

# SPOOL MAC

Part# 11900

## FEATURES:

- All steel frame construction
- 10" wheels
- Easy set-up for cable dispensing
- No loose pieces
- Compact storage
- Fits through 32" (81 cm) doorways
- 350 lb (160 kg) load capacity
- Priced right – built to last

\*Ships via freight



Max Reel Width	Max Spool Dia	Reel Capacity	Weight	Width	Additional Features
25 in 63.5 cm	40 in 101 cm	350 lbs 160 kg	76 lb. 35 kg.	31.5 in 80 cm	All steel frame, easy set-up for cable dispensing. Compact storage. Ship weight: 150 lbs



# CADDY MAC 1

Part# 11901

- Caddy Mac #1 transports spools on spindles and works as a dolly! Wire is dispensed while laying flat.
- 1/2" solid spindles are attached to cart, no loose pieces. Spindles lock in place, even during transportation.
- Spindles swing out to set position for convenient loading of wire spools.

Number of Spools	Max Spool Dia	Load Capacity	Weight	Width	Additional Features
8-#10 awg. or 12-#12 awg.	7.5 in 19 cm	200 lbs 90 kg	72 lb. 33 kg.	26 in 66 cm	Transports spools on spindles and works as a dolly. Wire is dispensed while laying flat.

# REEL MAC



## REEL MAC 60

Screw type telescoping reel jack for 26 to 56" diameter reels.

## REEL MAC 70

Screw type telescoping reel jack for 46 to 96" diameter reels.

## REEL MAC 80

Heavy duty ratchet drive reel jack for reels up to 90" in diameter. Convenient, detachable ratchet handle stores in base when not in use.

Mfg. Note: Reel Macs sold as singles, buy 2 for a set.



Reel Mac 60  
Part# 11860



Reel Mac 70  
Part# 11870



Reel Mac 80  
Part# 11880

# REEL MAC SPINDLES

Used with Reel Mac reel jacks. (Sold separately)



REEL MAC & JACK-A-TIER				
Description	Part #	Reel Diameter	Capacity	Weight
Reel Mac #60	11860	26-56"	2500lb	27lbs
Reel Mac #70	11870	46-96"	2500lb	46lbs
Reel Mac #80	11880	up to 90"	3750lb	99lbs

Corresponding SPINDLES				
Description	Part #	Dimensions	Capacity	Weight
#61	11861	2 3/8" x 62"	5000lb	39lbs
#71	11871	2 3/8" x 76"	5000lb	47lbs
#81	11881	3 1/2" x 100"	7500lb	119lbs



Part# CC1200 - Cable Caddy

# CABLE TRUCK & CABLE CADDY



- Constructed of rugged 1" steel tubing.
- Both are 43" tall with 7" rubber wheels.
- Both can accommodate spools up to 16" wide on solid steel 1/2" axles.
- Cable Caddy features 6 axle positions for unlimited versatility.
- Cable Truck has 4 axle positions and a solid steel plate for transporting material.



Part# CT1100 - Cable Truck

# CABLE CARTS



Part# CC2000 - Cable Cart

- Comes with interchangeable 1" and 3/4" axles.
- Holds up to 30 spools of THHN.

- Vertical racks swing forward for easy loading
- Space for plywood work table on top

Dimensions: 40W x 48L x 48H / Shipping weight: 185 lbs



FOLLOW US ON



WWW.RACK-A-TIERS.COM

SALES@RACK-A-TIERS.COM

TOLL FREE: 1 (888) 939-9991





# CABLE REEL ROLLERS

CABLE REEL ROLLERS ARE USED FOR ROLLING LARGE CABLE SPOOLS, FOR PAYOUT, UNWINDING AND TAKE-UP OF HEAVY CABLE. FOR PURCHASING OR RENTING THESE CABLE ROLLERS OR BUILT TO YOUR SPECIFICATIONS CALL [RACK-A-TIERS.COM](http://RACK-A-TIERS.COM)



## FEATURES & BENEFITS



Part# 2010T




Part# 2015T



Part# 2040T

THREE EASY STEPS! 1. SCREW TO BASE OF REEL 2. FLIP OVER REEL 3. PULL WIRE!

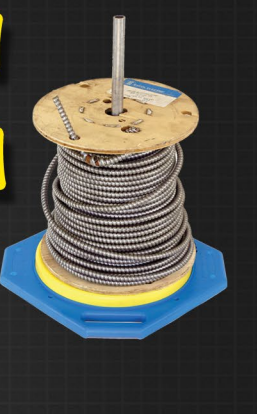


## TUG WISE

**STANDARD MODEL** (15" x 15")

- 4 screw holes for easy attachment
- Works with wooden and plastic reels
- Standard model can handle up to 1000 lbs



Part# 11931



## 4 REEL BRACKETS


The 4Reel Brackets clamp on to a standard 2x4 wood stud and are capable of holding multiple 1,000' reels of wire.

*SEE IT IN ACTION HERE!*



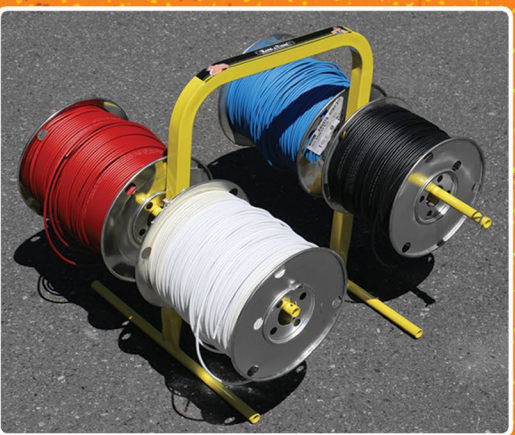
- Made for a maximum of 4 – 1000' NMD reels or weight equivalent.
- Clip together for compact, easy storage.
- Made from galvanized steel.
- To be used on 2x4 wood studs only. Not meant for steel studs.
- Do not install higher than 20".
- 1" IMC or Rigid is recommended with heavier loads.
- Mounting pins provided.
- 700 lbs. Load Tested

Part# 11560



SPECIFICATIONS	2010T 10 Ton Cable Reel Roller	2015T 15 Ton Cable Reel Roller	2040T 40 Ton Cable Reel Roller
Load Capacity:	20,000 lbs	30,000 lbs	80,000 lbs
Spool Size Range:	2-8 ft diameter 5 ft-3 in max width	2-12 ft diameter 8 ft max width	5-16 ft diameter 10 ft max width
Tractive Effort/Torque:	2,150 lbs	3,000 lbs	8,500 lbs
Rotation Speed:	30-780 in/min	48-480 in/min	48-480 in/min
Height Range:	Low Profile, fine adjust leveling feet optional	Low Profile, fine adjust leveling feet optional	Low Profile, fine adjust leveling feet optional
Power Requirements:	240V, 1-ph*	240V, 1-ph*	480V, 3-ph*
Equipment Mass:	2,200 lbs	3,015 lbs	6,700 lbs
Footprint:	79"x 95" x 29"	99"x 134" x 22"	102"x 156" x 43"

\* 208 - 600V, 50 or 60 Hz input power options available. Specifications subject to change; consult factory for all specifications.



## WIRE SPOOL HAND CART

- Finish: Yellow powder coated
- Dispenses (8) 5" Wide Reels or (4) 6 to 10" Wide Reels, up to 7" Dia.
- 80 LB capacity
- Height 20"
- Width 15"
- Length 26"
- Number of Spindles 4
- Material: Steel

Part# 11700





## SMART LOAD 500

The Smart Load 500 is an easy to use, portable wire dispensing cart. This versatile cart offers dispensing options for a variety of spool sizes. The dispensing bars even fold up for easy storage. This patented design will surely save you time and effort on the job site, in the warehouse or wherever you need it!

- Spool Capacity: 24 - #12 or 14 500' THHN
- 15 - #10 500' THHN
- Max Weight Capacity: 350 lbs.

Part# 11905  
Patent # US10676310B2





# COPPER WIRE STRIPPERS

RECOVER COPPER & ALUMINUM WIRE QUICKLY AND EASILY WITH THESE MONEY MAKING MACHINES!

## COPPER WIRE STRIPPER 2

The top selling CWS-2 model weighs in at only 45lbs. This wire stripper is compact enough to easily move around, but still has the ability to strip a wide range of wire.

**FEATURES:**

- Strips from 14 AWG to 750 MCM (1.45" diameter)
- Strips NMSC cable 10-14 AWG
- 1/2 HP Motor
- All aluminum frame
- Hardened one piece blade
- Strips solid core or braided wire
- Blade made from tool steel
- Blade easily re-sharpened
- Fully adjustable wire guide

Part# 47200

SEE IT IN ACTION HERE!



## COPPER WIRE STRIPPER 1

The CWS-1 is the largest wire stripper available from Rack-A-Tiers. Powered by a 1 HP motor and with the ability to strip up to 3" in diameter, there isn't much this wire stripper can't handle.

**FEATURES:**

- Strips 14 AWG to up to 3" in diameter
- Strips NMSC cable 10-14 AWG
- 1 HP motor
- All aluminum frame
- Hardened one piece blade
- Strips solid core or braided wire
- Blade made from tool steel
- Blade easily re-sharpened
- Fully adjustable wire guide
- Bench model - anti-slip base
- Made in Canada

Part# 47100



## COPPER WIRE STRIPPER JR.

A low cost alternative to the CWS-2, the Copper Wire Stripper Jr. is the money making tool that you need in your warehouse. Driven by a standard power drill, you'll get more than double the money from your scrap wire. It's that simple!

**FEATURES:**

- Wire Range: 14 AWG - 4/0
- Strips NMSC cable 10-14 AWG
- All aluminum frame
- Single pass cuts outer jacket & one inner wire
- Hardened one piece blade
- Strips solid core or braided wire
- Blade made from tool steel
- Blade easily re-sharpened
- Fully adjustable wire guide

Part# 47030

SEE IT IN ACTION HERE!



CWS JR.  
SINGLE PASS CUTS  
OUTER JACKET AND  
1 INNER WIRE



## EASY STRIPPER

Strip the cover off your scrap wire in minutes with the Easy Stripper! Increase your earnings on every single job you complete.

**FEATURES:**

- Less than 10% the price of a standard motorized wire stripper
- Strips 12 to 4/0 wire
- Powered by any normal power drill
- Way easier and faster than using your knife!
- Environmentally friendly - no burning required
- For Light Use Only

Part# 47020



## REPLACEMENT PARTS

**CWS-1**

Replacement Blade - Part# 47100B  
Red Feed Guide - Part# 47100G  
Replacement Pulling Wheels - Part# 47100W

**CWS-2**

Replacement Blade - Part# 47200B  
Red Feed Guide - Part# 47200G  
Replacement Pulling Wheels - Part# 47200W

**EASY STRIPPER**

Replacement Blade 2nd Edition - Part# 47020B2

**CWS JR.**

Replacement Blade - Part# 47030B  
Red Feed Guide - Part# 47030G  
Replacement Pulling Wheels - Part# 47030W  
Replacement Shaft - Part# 47030S

WIRE BENDING MADE EASY



The Bulldog Bender is designed and manufactured by an electrician for electricians. Used for bending wire in panels, disconnects, LBs & wireways. The Bulldog Bender will prove to be a valuable tool to add to your arsenal. As with any specialty tool, with practice you will learn how to use the Bender to its full bending potential.

Part# 78600

Part# 78500

Part# 78501

Part# 78502

Part# 78400

Hourglass Dowels (smooth)  
Part# 78050 - Up to 500MCM  
Part# 78060 - Up to 750MCM

SEE IT IN ACTION HERE!

PART #	DESCRIPTION	SIZE
78500	BULLDOG ORIGINAL	UP TO 500 MCM
78501	BULLDOG PRO WITH ADAPTOR	UP TO 500 MCM
78502	BULLDOG 3-PIECE SET (ORIGINAL + PRO)	UP TO 500 MCM
78600	BULLDOG BIG DADDY 3-PIECE SET	UP TO 750 MCM
78400	BULLDOG PUP	UP TO 4/0
78402	BULLDOG "PUP PRO" 2 PCS SET	UP TO 4/0
78403	BULLDOG "PUP" 3 PIECE SET	UP TO 4/0

ALL BULLDOGS SHIPPED WITH KNURLED DOWELS EXCEPT THE "PUP" SERIES. SMOOTH DOWELS AVAILABLE.

# Bend-All

SAVE YOUR KNUCKLES BY USING OUR BEND-ALL CABLE BENDER! MADE WITH MACHINED AIRCRAFT ALUMINUM, THIS CABLE BENDER IS EXTREMELY STRONG AND DURABLE. IT CONNECTS TO YOUR STANDARD 1/2" RATCHET, MAKING CABLE BENDING A BREEZE FOR YOU.

BENDS UP TO 500 MCM

Part# 77455





# HOPPY BENDER

**EASY AS 1,2,3!**

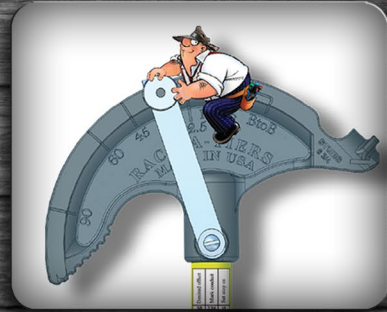
THE HOPPY BENDER IS HANDS DOWN THE SMARTEST & MOST INNOVATIVE BENDER ON THE MARKET. WE HAVE REVOLUTIONIZED THE WAY ELECTRICIANS BEND PIPE - IT HAS NEVER BEEN EASIER OR FASTER THAN IT IS NOW WITH THE HOPPY BENDER.

SEE IT IN ACTION HERE!

## STEP ONE READ TABLE AND MARK PIPE

Desired offset	Max conduit	Spring
3/8"	3/4"	10
1/2"	1"	8
5/8"	1 1/4"	6
3/4"	1 1/2"	4
7/8"	1 3/4"	2
1"	2"	1
1 1/8"	2 1/4"	
1 1/4"	2 1/2"	
1 1/2"	2 3/4"	
1 3/4"	3"	
1 5/8"	3 1/4"	
1 3/4"	3 1/2"	
1 7/8"	3 3/4"	
2"	4"	
2 1/8"	4 1/4"	
2 1/4"	4 1/2"	
2 3/8"	4 3/4"	
2 1/2"	5"	
2 5/8"	5 1/4"	
2 3/4"	5 1/2"	
2 7/8"	5 3/4"	
3"	6"	
3 1/8"	6 1/4"	
3 1/4"	6 1/2"	
3 3/8"	6 3/4"	
3 1/2"	7"	
3 5/8"	7 1/4"	
3 3/4"	7 1/2"	
3 7/8"	7 3/4"	
4"	8"	
4 1/8"	8 1/4"	
4 1/4"	8 1/2"	
4 3/8"	8 3/4"	
4 1/2"	9"	
4 5/8"	9 1/4"	
4 3/4"	9 1/2"	
4 7/8"	9 3/4"	
5"	10"	
5 1/8"	10 1/4"	
5 1/4"	10 1/2"	
5 3/8"	10 3/4"	
5 1/2"	11"	
5 5/8"	11 1/4"	
5 3/4"	11 1/2"	
5 7/8"	11 3/4"	
6"	12"	

## STEP TWO SET STOP



## STEP THREE

Get Bent



### FEATURES:

- A "Stop" attached to the Bender head used to create exact & repeatable bends every time.
- Simplified "Multipliers" engraved into the bender for placing the "Stop" prior to making off sets & four-point saddles.
- Special 22.5 and 45 degree marks engraved into the bender for placement of conduit bend marks as well as standard degree marks for stop placement.
- Used together for bending three-point saddles without reversing the conduit in the shoe.
- Handy reference charts attached to the handle for locating bend marks.

Part#		
57050 - 1/2" Hoppy Bender	57050LAB - 1/2" Replacement Label	
57075 - 3/4" Hoppy Bender	57057 - 1/2" Replacement Swing-Stop	
57002 - Replacement Handle	57075LAB - 3/4" Replacement Label	
57005 - Replacement Thumb Screw	57077 - 3/4" Replacement Swing-Stop	

# Stubbees

**THREAD THIS**

**BEND THIS**

**MAKE THIS**

CREATE SHORT, RIGID BENDS EASILY IN MECHANICAL BENDERS WITH OUR STUBBIES!

NEED A BIGGER STUBBEE? CONTACT OUR SALES TEAM!

1/2" Stubbee - Part# 59250  
3/4" Stubbee - Part# 59275

# PIPE VIPER

COLD BEND RIGID PVC PIPE WITHOUT PIPE COLLAPSE OR FRACTURE!



## HOW?

Simply insert the spring into the pipe & bend across your knee!

- No Heat Guns
- No Heat Blankets
- Fewer PVC Fittings

MFG Note:

Needs to be at least 50 degrees Fahrenheit to work effectively

### PART#

- 58050 - 1/2" PVC Spring Bender
- 58075 - 3/4" PVC Spring Bender
- 58100 - 1" PVC Spring Bender
- 58125 - 1 1/4" PVC Spring Bender
- 58150 - 1 1/2" PVC Spring Bender
- 58200 - 2" PVC Spring Bender
- 58250 - 2 1/2" PVC Spring Bender
- 58300 - 3" PVC Spring Bender
- 58350 - 3 1/2" PVC Spring Bender
- 58400 - 4" PVC Spring Bender



SEE IT IN ACTION HERE!

# The HEAT TANK



The Heat Tank is a simple and effective way to bend your PVC pipe. Using a standard forced air heat gun, means no expensive blanket or heat boxes are required. Simply connect your heat gun to the designated slot, insert the portion of the pipe you wish to bend and you're set!



\*Heat Gun Not Included

WILL HOLD UP TO  
1 1/2" PVC CONDUIT.

### FEATURES:

- Prevent overheating and burning with the temperature gauge
- Saves time with hands free heating
- Eliminates the need to buy prefab 90's and couplings

Part# 59500





# THE JIMBO

## WIRE PULL BRACKET

A LITTLE BRACKET THAT MAKES A BIG DIFFERENCE!



### FEATURES:

- Set up multiple brackets making a temporary cable raceway to avoid snags or catching
- Pull hard around corners and through structural steel
- Consolidate cables to the best angle for ease of pulling

Part# 40200



The Jimbo – Wire Pull Bracket helps to eliminate cable snags and damage over sharp edges and ceiling grids. Maximize your efficiency working by yourself with a helping hand from the Jimbo.

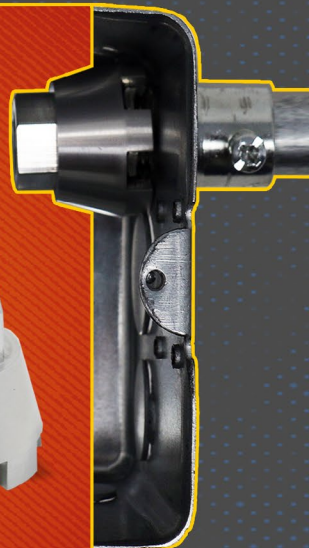
# NUT SNUGGER

Utilizing magnets, The Nut Snugger allows you to install a connector without assistance of another worker when the location of the connector is out of reach.

### FEATURES:

- Patent Pending
- Made in USA
- Can be used with adjustable wrench, tongue and groove pliers, 3/4" box wrench, and 3/8" drive ratchet.

Part#s 80075 – 3/4"  
80050 – 1/2" 80090 – Kit 1/2" and 3/4"



### Available Sizes:

Part# 79150 - 2 Piece Locknut Wrench Kit  
(Includes 1/2" & 3/4")  
Part# 79200 - 3 Piece Locknut Wrench Kit  
(Includes 1/2", 3/4" & 1")

# THE LOCKNUT WRENCH



How many locknuts have you bashed with your flat blade screw driver? The Locknut Wrench allows you to tighten locknuts quickly and works great in tight spaces. The patent pending design is available in 3 sizes.

- Offset ends allow access in tight locations. Handle cut away sections are engineered to exact lock nut engagement and rotation
- Singular handle prevents wrist tension
- Clear permanent laser etched markings to ease use
- Comprised of durable steel and strong enough for any job



IT'S SIMPLE... FOAM LINE CARRIERS ARE EXPENSIVE

# BAG PIPERS

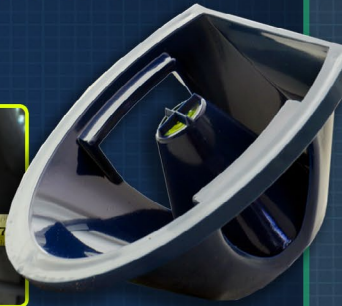
ARE CHEAPER AND WORK MUCH BETTER  
3 sizes available to fit conduit 1/2" up to 6"



Part#  
BP05.125 (sm) 1/2" x 1 1/4" - 10 pack  
BP150.40 (med) 1 1/2" x 4" - 5 pack  
BP20.60 (lg) 2" x 6" - 3 pack  
BP05.600 (multi-pack) 1/2" x 6" - 6 pack

# GD CENTER FINDER

The GDCenter Finder is a new product that revolutionizes the installation of electrical panels and junction boxes. No need to learn a new installation process. Pull your layout just as you always have, but this time aided with the GDCenter Finder. Your center point will always be level and clearly identified. The days of "close enough" are over. Finally a center tool that works!



Part# 67500

# THE PENGUIN PULLER



The Penguin Puller Sr. and Penguin Puller Jr. are revolutionary new tools designed to aid in easily pulling large cables. The sleek, bullet shape allows for seamless pulling, no tape or crimps required. Utilizing four slots and allen-key set screws, the Penguin Puller Sr. and Penguin Puller Jr. are rated for 4000 lbs. of pull strength. These tools are the cool new kids on the block and here to stay when it comes to pulling wire!

### Features:

- 4000 LBS. MAX PULL STRENGTH
- Penguin Puller Sr. – 3/0 to 350 MCM Copper or Aluminum
- Penguin Puller Jr. – 2/0 to 4/0 Copper or Aluminum
- No tape, no crimps, no mess
- Reusable

Part#  
69700 - Penguin Puller Sr. For Pipe 2 1/2" and Larger  
69705 - Penguin Puller Jr. For Pipe 2" and Larger

# FLUSH PIN SHACKLE

- Stainless Steel
- Four Ton Break Load
- .5" Pin Size



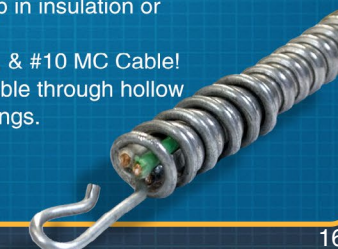
Part# 69710

# FLEX PULLER



2 Pack  
Part# 42620

- Flexible metal conduit pulling tool easily screws onto exterior of MC cable & provides a hook to pull cable.
- No more getting caught up in insulation or other obstacles!
- Can be used on #14, #12, & #10 MC Cable!
- Provides a hook to pull cable through hollow & insulated walls and ceilings.





# THE ALL AMERICAN PULL BUDDY

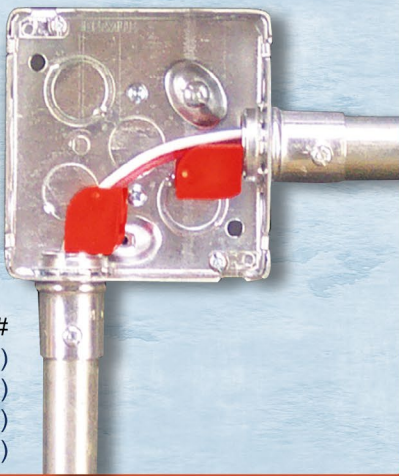
## SHOEHORNS FOR YOUR WIRE



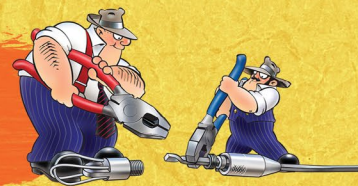
### FEATURES:

- Reduces Time and Labor
- Reduces the chance of damaging wires
- Turns wire pulling into a one person job

Part#  
42000 - Multi-Pack (6 pack / 2 of each)  
42050 - 1/2" Blue (10 Pack)  
42075 - 3/4" Red (10 Pack)  
42100 - 1" White (10 Pack)



# FLEX FLYER



## FEATURING "QUICK CHANGE SWIVEL HEAD"

The Flex Flyer features a quick change swivel head that installs on the end of a fish tape in 20 seconds by twisting the fish tape with 2 pairs of pliers.

- Installs in under 20 seconds using two pairs of pliers, no torch needed
- Flies through those tough conduit runs
- Loop technology allows leader to glide through flex as well as all other types of conduit
- Loop allow leader to be snagged from other end of conduit run when necessary
- Standard 1/4"-28 threads allow for the use of other types of leaders on quick change base

### Part#

69050 - Flex Flyer 1/2"  
69075 - Flex Flyer 3/4"



# FISH-HEADS

Tired of fish tapes getting snagged or breaking? Try Fish Heads to fix and improve your broken fish tape end.

### FEATURES:

- Complete spherical head reduces the chance of getting stuck
- Tapered back end
- Tested 500+ pounds
- Reusable



Part# 69010

# LB Wire Guide

## THE LB WIRE GUIDE IS A "SHOE HORN" FOR 2" LB'S.

Part# 42200

### FEATURES:

- Assists while working on your own
- For PVC LB fittings and is adaptable to most metal LB's
- Fast for one person conductor installations
- Installs in two positions to fit both "Ends" of the LB

### MFG NOTE

Two hundred amp services (3/0 wire) can be hard on your knuckles. The LB Wire Guide puts the wire in the pipe and leaves the skin on your fingers.



# StingRay

SNAP IN PLACE & PULL YOUR WIRE

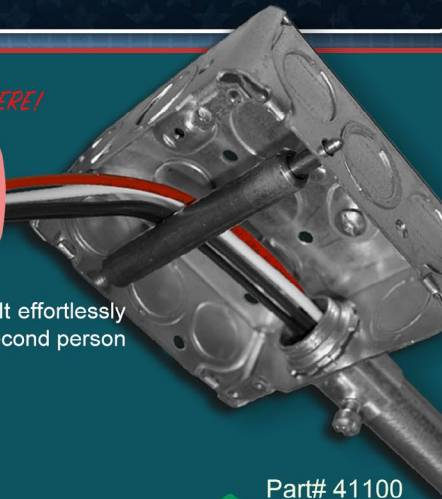
- PROTECTS EXPENSIVE AND FRAGILE CABLES
- PROTECTS CEILING FROM TWISTING AND MARRING
- PREVENTS CABLES FROM TANGLING WITH THE CEILING, SAVING TIME AND LABOR
- SMOOTH INTERIOR CREATES AN ALMOST FRICTIONLESS CHASE
- SIDE SLIT ALLOWS FOR EASY CABLE REMOVAL AT ANY TIME
- EASY TO INSTALL AND REMOVE



 Part# 40400



SEE IT IN ACTION HERE!



Part# 41100

This slim, but strong, steel roller fits in all standard 4x4 boxes for smooth and controlled wire pulling. It effortlessly guides wire and cable into the feeding end of the job at the correct angle, eliminating the need for a second person to manually guide the feeding end.

### Features

- Spring loaded tips keep it locked in place
- Stainless steel design for maximum strength

# WIRE VORTEX

If you need an extra pair of hands on the job, try the Wire Vortex. This wire pulling guide fits on 4" square boxes and saves you tons of time when pulling wire.

### FEATURES:

- Protects wire from damage when pulling
- Can pull wire in all 4 directions
- Use for standard (shallow) or deep boxes
- Built with durable, impact-resistant plastic
- Easy to slip on and off



Part# 40001

# SNATCH STRAPS

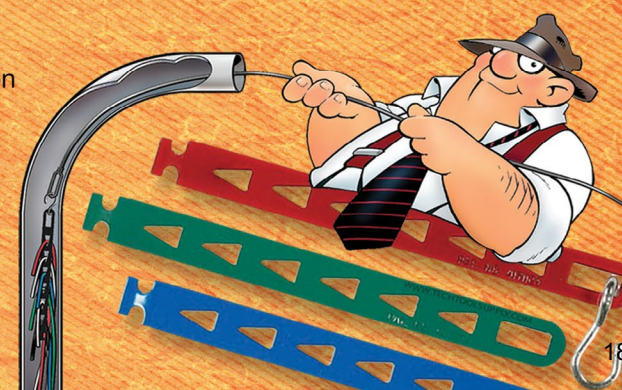
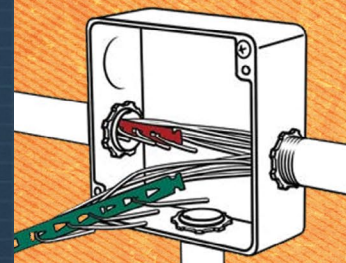
Use the Snatch Strap for fast attachment on conduit pulls. No stripping or taping required!

- Pull more conductors with less effort
- Can be chained together
- Color coded for easy circuit and phase identification

### MFG Note:

Snatch Strap handles #22 - #12 AWG. If additional wires are required simply add additional straps.

Part# 69455



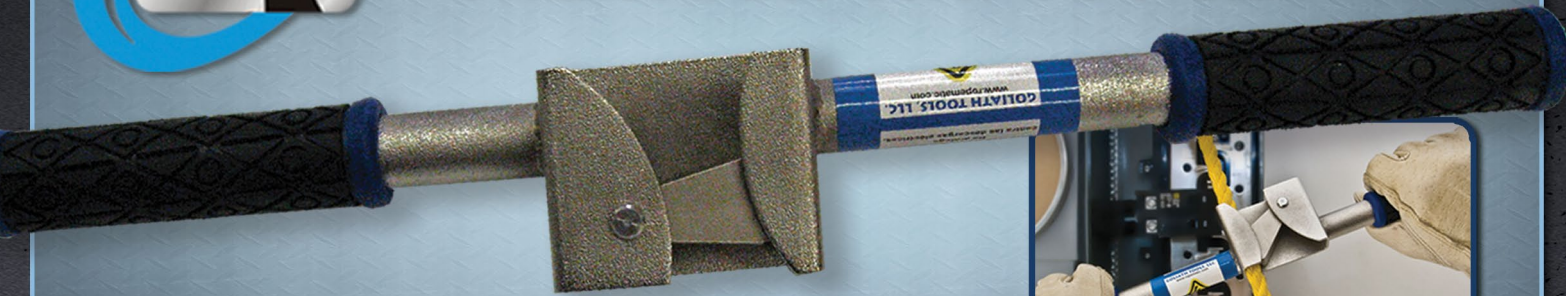


PART# 42400



# ROPEMATIC PRO

## THE SMART WAY TO PULL



**STOP HURTING YOUR HANDS AND WRISTS.  
STOP BREAKING EXPENSIVE FISH TAPE.**

**PULL ROPE AND FISH TAPE THE SMART WAY WITH THE ROPEMATIC.**

The Ropematic has a durable latch that grabs rope or fish tape when you are pulling down. As you pull back up, the latch loosens and easily slides up the rope or fish tape. You can then pull down again and the Ropematic will grab the rope or fish tape, pulling it down.



# The PUCK

## Ground Clamp Socket



### Features:

- Compact
- Made from aircraft aluminum
- Indicating line
- Multi-purpose
- Industry-standard ground clamps
- Fits common 1/2 inch drive socket wrenches

## A NEW SOLUTION FOR INSTALLING GROUND CLAMPS

Grounding clamps are used to ensure complete discharge of electricity while servicing or maintenance of electrical power systems in substations. There are many varieties of clamps manufactured by different companies, each with different fastening configurations such as an eye-bolt or a T-handle. Technicians use screwdrivers or channel lock pliers to tighten the grounding clamps. This sometimes produces a poor contact on the bus because of lack of accessibility. The Puck, when used with a standard 1/2 inch drive socket, provides the proper leverage in limited visibility or access areas, ensuring a proper contact on the bus.



An "indicating line" for use when working blind.



The Puck fits most brands' T-handles.



The Puck also fits most brands' eye-bolts.

Eye-bolts obstructed by cable further complicate turning the bolts with a screwdriver or channel lock pliers

Designed For:  
Electricians  
Electrical Workers  
Linemen  
Utility Industry

*SEE IT IN ACTION HERE!*



Part# 40950

# SolderM8



### SolderM8 is an Electricians best Mate

An amazing little gadget created by an Electrician for Electricians. It makes soldering LED strip lights so easy even your most inexperienced apprentice will conquer the skill in no time. You can now provide a high quality, durable finish on full lengths of LED strips in a fraction of the time – it will cut your costs and up your profits. For these reasons SolderM8 is now fast becoming an essential in every professional Electrician's toolbox.

### What it Does

The magical underside sticks to flat or textured surfaces at every angle, even upside down. Insert the wires and it holds them in place firmly while you dab on solder and hey-presto the job is done and you move on to the next joint quickly, cleanly and easily.

Part# SM802 *SEE IT IN ACTION HERE!*

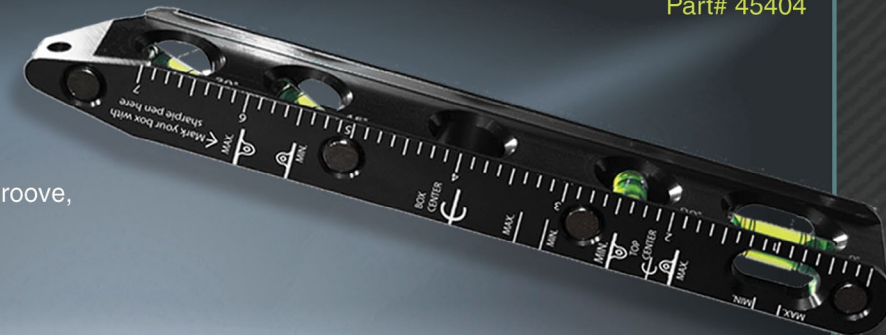


## JET LEVEL

This convenient and strong pocket level comes with 4 precision vials of 0, 30, 45, and 90 degrees.

### FEATURES:

- CNC milled from 6061 aluminum extra large "VD" groove, straddles up to 10" diameter
- Rare Earth magnets for extra holding
- Water and shock resistant



Part# 45404



# BREAKER LOK

**SECURE ANY CIRCUIT BREAKER IN THE ON POSITION WITH EASE!**

- Universal lock fits most breakers & standard toggle switches.
- Set screw and rigid leg prevents lock from slipping off breaker.
- Reusable & corrosion resistant.



Part# 75000 - 5 Pack

# TrunkTie



### What is Trunktie?

Trunkties are a simple solution designed to hold, hang, or tag things in position relative to an unpopulated port. Their most common use is to hold tags for identifying network ports, but our customers have found countless creative applications for their use.

### How it works

Trunkties plug into an unused port, providing a flexible cable that secures into a multipurpose loop. That's all, it's that simple.

Part # 75065 (Pack of 25)

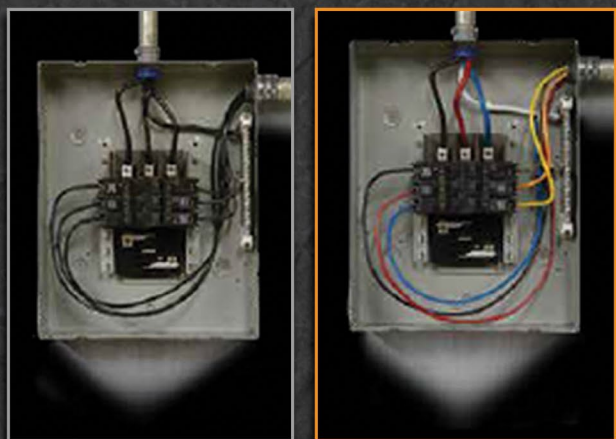




# UPHASE

## WIRE MARKERS

QUICKLY AND CONVENIENTLY USE THE UPHASE WIRE MARKER TO COLOR CORDS AND WIRES FOR FAST AND EASY ORGANIZATION



BEFORE AFTER

# UPHASE

## LARGE WIRE MARKERS

### FEATURES

- Patented tip design marks MCM wire up to 3/4 in. quickly, effectively, as well as smaller AWG wire (U.S. Patent No. 7,320,553)
- New, resilient polyester tip lasts longer
- Marks adhere to clean sheath permanently and resist handling, abrasion, and heat
- 10 times more mileage, 20 percent lower cost than vinyl tape
- Green label paint has lower environmental impact than vinyl tape
- Drying Time Approx. 90 sec.
- Marking Temp Range 0 degrees to 110 degrees Fahrenheit (-18 degrees to 44 degrees C)

### Part#

52496BK - Black  
52496BL - Blue  
52496GR - Green  
52496RD - Red  
52496WT - White

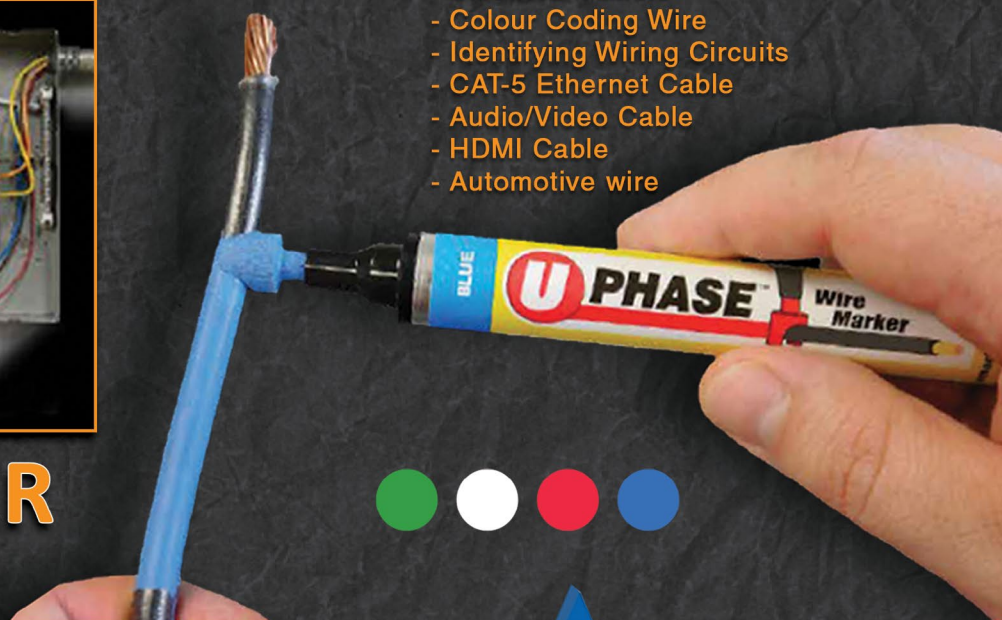
Patent# 7,320,553

### Part#

52490BK - Black - 4 pack  
52490BL - Blue - 4 pack  
52490RD - Red - 4 pack  
52490WT - White - 4 pack  
52490BR - Brown - 4 pack  
52490GR - Green - 4 pack  
52490GY - Gray - 4 pack  
52490OR - Orange - 4 pack  
52490VT - Violet - 4 pack  
52490YW - Yellow - 4 pack  
52491 - 4 pack Kit (blue, red, white, green)  
52493 - 4 pack Kit (gray, orange, yellow, brown)  
52492 - Replacement tip

- Electrical Panels
- Colour Coding Wire
- Identifying Wiring Circuits
- CAT-5 Ethernet Cable
- Audio/Video Cable
- HDMI Cable
- Automotive wire

SEE IT IN ACTION HERE!



# MARK MY WIRE

## WIRE MARKING SYSTEM



USE HIGH DENSITY, QUICK DRYING MARKERS THE OLD FASHIONED WAY OR THREAD THE WIRE DIRECTLY THROUGH THE HOLE IN THE MARKER'S TIP! PAINTS ON 14, 12 & 10 WIRE!

AVAILABLE IN:

Blue

Part# 52480BL

Red

Part# 52480RD

Black

Part# 52480BK



# PHASE IT RIGHT

## PRE-PRINTED COLOR WIRE MARKERS



Phase marking is more than just a numbers game. Get it right with Rack-A-Tiers' colored phase marking tags

### Part# 52630

Low Voltage 1-45 (Brown, Orange, Yellow)

### Part# 52645

Low Voltage 46-90 (Brown, Orange, Yellow)

### Part# 52600

High Voltage 1-45 (Black, Red, Blue)

### Part# 52615

High Voltage 46-90 (Black, Red, Blue)







# WiFi INSPECTION CAMERA AND CABLE PULLING TOOL

Built-in WiFi hotspot. Wireless and rechargeable

Wireless range of up to 50' (15m) using a glow rod/fish stick  
(It's not tethered like a traditional borescope)

Record photos & videos to your smart device with the free and easy to use App (Android V6/iOS V8 or later)

High resolution 720p HD real time streaming

Bright white LEDs for visibility in complete darkness

Always up viewing mode for intuitive inspections

Digital zoom allows for close up viewing

Includes short rod, gooseneck, hook, magnet and thread adaptors

Visual inspections, cable installations, maintenance and repair work made easy with the Ferret

## NEW FERRET RANGE

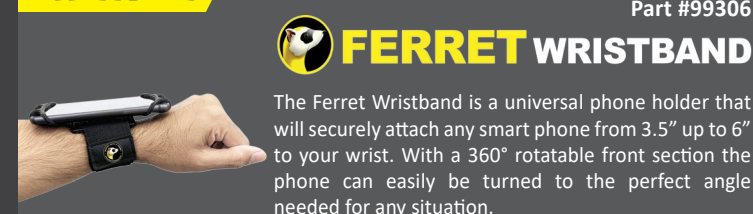


## THERE'S A FERRET FOR EVERYONE

NEW FERRET RANGE	NEW PRODUCT		
	FERRET LITE <sup>®</sup> Part #99317	FERRET PRO <sup>®</sup> Part #99320	FERRET PLUS <sup>®</sup> Part #99330
Save photos & video to smart device	✓	✓	✓
Always up function	✓	✓	✓
Battery charge time to 95% charged	1.5hrs	1hr	1hr
Suitable for cable pulling	✓	✓	✓
Able to change resolution & WiFi channel	✗	✓	✓
Lens (720p)	Fixed focus	Variable focus	Variable focus
Onboard Memory	✗	✗	✓
Built in non-contact voltage detector	✗	✗	✓



## ACCESSORIES



## FERRET WRISTBAND

The Ferret Wristband is a universal phone holder that will securely attach any smart phone from 3.5" up to 6" to your wrist. With a 360° rotatable front section the phone can easily be turned to the perfect angle needed for any situation.



## FERRET STICK

The Ferret Stick is an extendable rod made of lightweight 201 grade stainless steel with a non-slip rubber handle & secure wrist strap. It expands from 12" out to 55" and has a 1/4"-20UNC thread making it fully compatible with all Ferret products.



## FIND IT

Locate cables with ease

## HOOK IT

Visibility in complete darkness

## PULL IT

Pull cabling in half the time

FOR EASIER, FASTER & CLOSE UP VISUAL INSPECTIONS.

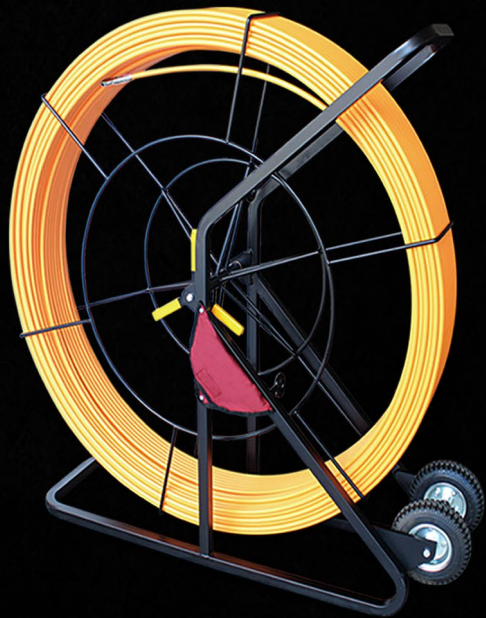
INSPECT WITH THE FERRET - SMART TOOL. SMART CHOICE.



# FIBER RODDERS

**1/2"** Part# FS12657 - 1/2" x 657'  
Part# FS12985 - 1/2" x 985'

- Fiberglass reinforced plastic with durable plastic surface coating
- Up to 985 ft in length, the 1/2" fish tape is excellent for the big fishing jobs
- Threaded stainless steel ends can be coupled with 4 different end types, including flexible guide, roller guide, pulling eye and clevis.
- High quality, cantilevered frame design provides good leverage and better balance when hoisting onto wheels
- Rubber wheels provide good traction and a smooth ride when transporting from truck to work location



**3/16"** Part# FS316200 - 3/16" x 200'  
Part# FS316300 - 3/16" x 300'

- Fiberglass reinforced plastic fish tape with durable low-friction polyamide coating
- Light and durable steel frame with anti-corrosion surface treatment
- Adjustable knob allows for easy control of wheel rotation speed
- Threaded brass ends can be coupled with ridged pulling eye or flexible guide type leads.
- Brass ends affixed with embedded pins for extra strength, holding up to 300 lbs of force.



**1/4"**

- Fiberglass reinforced plastic with low-friction plastic coating for smooth pulling.
- Breaking strength of 1400 lbs
- Available in a variety of lengths
- Sleek brass pulling eye with large eyelet for easier access
- Light and durable steel frame with anti-corrosion surface treatment
- Adjustable knob allows for easy control of



Part# FS14200 - 1/4" x 200'  
Part# FS14250 - 1/4" x 250'  
Part# FS14300 - 1/4" x 300'  
Part# FS14400 - 1/4" x 400'  
Part# FS14500 - 1/4" x 500'  
Part# FS14600 - 1/4" x 600'

## FIBER RODDERS SPLICE KIT



FS12.END -End Repair for 1/2" Fibersnake  
FS12.EYE -Eye-Loop for 1/2" Fibersnake  
FS12.SPL -Splice Repair for 1/2" Fibersnake  
FS14.END -End Repair for 1/4" Fibersnake  
FS14.SPL -Splice Repair for 1/4" Fibersnake

## PLASTIC COATED GLOWFISH

**5/32" Diameter luminous rods**

Super flexible glow-in-the-dark rods with our new plastic coating process. Great for tight jobs. The handy clear carry case keeps them constantly "charged" and ready.

### KITS

GLF407 Glowfish Kit contains: 1 - 6' B/F, 4 - 6' M/F w/ tips  
GLF408 3' Glowfish Kit contains: 1 - 3' B/F, 7- 3' M/F rods w/ tips

## PLASTIC COATED FIBERFISH II

**3/16" Diameter orange rods**

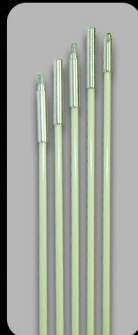
The most versatile of the Fiberfish with our new plastic coating process. Perfect for a wide range of installation situations and challenges.

### KITS

PCF207 Fiberfish Kit contains: 1 - 6' B/F, 4 - 6' M/F w/ tips  
PCF208 3' Fiberfish Kit contains: 1 - 3' B/F, 7- 3' M/F rods w/ tips  
PCF230 "FourPack" contains: 1 - 3' B/F, 3 - 3' M/F, tip, and FishHook in vinyl pouch

## REPLACEMENT RODS

GLF403 6' Bullnose/Bullnose (B/B) rod  
GLF406 6' Bullnose/Female (B/F) rod  
GLF410 6' Male/Female (M/F) rod  
GLF414 3' Bullnose/Female (B/F) rod  
GLF415 3' Male/Female (M/F) rod



## REPLACEMENT RODS

PCF206 6' Bullnose/Female (B/F) rod  
PCF210 6' Male/Female (M/F) rod  
PCF214 3' Bullnose/Female (B/F) rod  
PCF215 3' Male/Female (M/F) rod



# FFS: FUSION FISH TAPE

This polyester coated fish tape with a fiberglass core gives you the flexibility of a fiberglass fish tape, while maintaining the strength of a steel fish tape.

- Available in 100 and 150 feet lengths
- Non-conductive material
- Brass tipped eyelet end piece
- Polyester coated fish tape with fiberglass core

Part# EGC100 - 100'

Part# EGC150 - 150'

Wire Rope w Polymer Cover in Yellow Case

**THE BEST HYBRID  
FIBERGLASS/POLYMER FISH  
TAPE ON THE MARKET!  
MADE WITH PRECISION IN ITALY.**

## POLYESTER FISH TAPE IN CASES

THESE NON-CONDUCTIVE, LIGHT-WEIGHT FISH TAPES IN CASES ARE PERFECT FOR LINE OR LOW VOLTAGE FISHING. AVAILABLE IN SINGLE OR THREE STRAND DEPENDING ON THE JOB.

Part# EP615BC - 2 strand in black case - 49.2' (15m)  
Part# EP630BC - 3 strands in black case - 98.4' (30m)

## TELESCOPIC RODS

Part# 82016 -Standard Telescoping Pulling Poles 16"  
Part# 82026 -Standard Telescoping Pulling Poles 26"

### FEATURES:

- Non-conductive, wound filament fiberglass won't rust or corrode
- Polyester resin baked enamel coating
- All purpose hook included



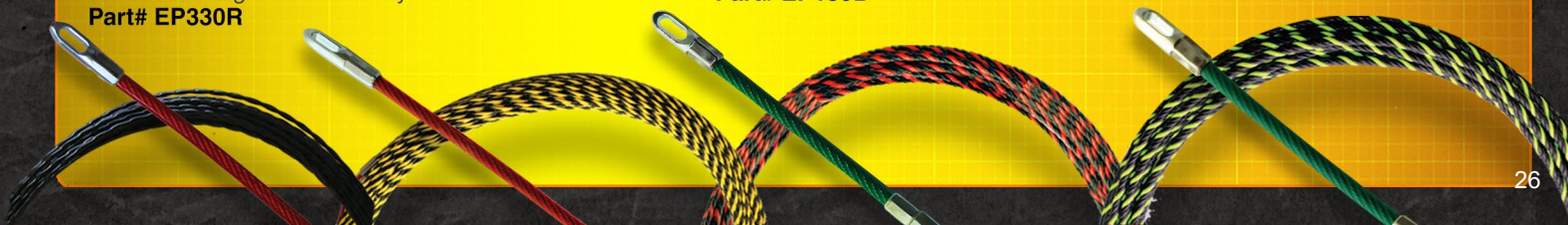
# POLYESTER FISH TAPE

**4 CORE GREEN & BLACK POLYESTER FISH TAPE:**  
100ft (30M) The 4 core twisted polyester fish tape is the strongest and most powerful product suitable for long distance electrical work.  
Part# EP430G

**3 CORE RED & BLACK POLYESTER FISH TAPE:**  
100ft (30M) 3 core twisted polyester fish tape for increased strength and flexibility.  
Part# EP330R

**2 CORE POLYESTER FISH TAPE:**  
165ft (50M) 2 core twisted polyester fish tape coated for reduced friction.  
Part# EP250Y

**SINGLE CORE POLYESTER FISH TAPE:**  
100ft (30M) single core twisted polyester fish tape for coated for a light, economical option.  
Part# EP130B





# JAVELIN

## ALL IN ONE DRILLING EXTENSION

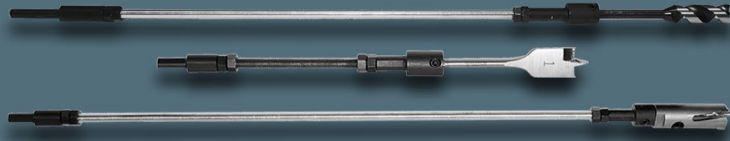


Part# 95000

The Javelin is here to change the way we drill holes. Never get caught in a drilling extension jam again! This all-in-one extension drill can reach up to 10 feet. It comes with a fully adjustable hole cutter and auger bit extension kit. Just cut a 3/8" - 16 threaded rod to any length you need.

### FEATURES:

- Holds drivers bits
- Holds nut drivers
- Holds drill bits
- Reaches up to 10 feet long



## QUATTRO FLEX AUGER BITS

Fast and aggressive self feed auger bits, welded to a flexible shaft. Cuts clean holes. Crossbored at both ends for easy wire pulling. Use for wood only.

Part# QTT3824	3/8"x24"	Part# QTT1224	1/2"x24"	Part# QTT91624	9/16"x24"	Part# QTT3424	3/4"x24"
Part# QTT3836	3/8"x36"	Part# QTT1236	1/2"x36"	Part# QTT91636	9/16"x36"	Part# QTT3436	3/4"x36"
Part# QTT3848	3/8"x48"	Part# QTT1248	1/2"x48"	Part# QTT91648	9/16"x48"	Part# QTT3448	3/4"x48"
Part# QTT3854	3/8"x54"	Part# QTT1254	1/2"x54"	Part# QTT91654	9/16"x54"	Part# QTT3454	3/4"x54"
Part# QTT3872	3/8"x72"	Part# QTT1272	1/2"x72"	Part# QTT91672	9/16"x72"	Part# QTT3472	3/4"x72"

More sizes available

## HIGH SPEED STEEL

Superior quality M-2 High Speed Steel drill bit welded to a flexible shaft. Cuts both metal and wood. No need to worry about hidden nails or metal studs when drilling.

Part# FLX1424	1/4"x24"	Part# FLX3824	3/8"x24"	Part# FLX1224	1/2"x24"
Part# FLX1436	1/4"x36"	Part# FLX3836	3/8"x36"	Part# FLX1236	1/2"x36"
Part# FLX1448	1/4"x48"	Part# FLX3848	3/8"x48"	Part# FLX1248	1/2"x48"
Part# FLX1454	1/4"x54"	Part# FLX3854	3/8"x54"	Part# FLX1254	1/2"x54"
Part# FLX1472	1/4"x72"	Part# FLX3872	3/8"x72"	Part# FLX1272	1/2"x72"

## GUIDE TOOL

Allows the Piranhabs to bend for drilling from outside the wall cavity.



Part# FIB-GUD

# SWITCH BITS

## INTERCHANGEABLE FLEX BITS

Rack-A-Tiers is proud to announce the Switch Bit line, our newest line of flexible installer bits. Quickly and easily customize your own set with these flexible bits featuring interchangeable heads and different shank lengths to fit any job.

ETS31621	SINGLE SHANK	3/16"	21"
ETS31633	SINGLE SHANK	3/16"	33"
ETS31654	SINGLE SHANK	3/16"	51"
ETS31669	SINGLE SHANK	3/16"	69"
ETS1421	SINGLE SHANK	1/4"	21"
ETS1433	SINGLE SHANK	1/4"	33"
ETS1454	SINGLE SHANK	1/4"	51"
ETB38316	INTERCHANGEABLE HEAD	3/8"	
ETB916316	INTERCHANGEABLE HEAD	9/16"	
ETB3414	INTERCHANGEABLE HEAD	3/4"	
ETC38S316	SWITCHBIT COMBO HEAD (3/8") & SHANK (3/16" x 33")		
ETC916S316	SWITCHBIT COMBO HEAD (9/16") & SHANK (3/16" x 33")		
ETC34S14	SWITCHBIT COMBO HEAD (3/4") & SHANK (1/4" x 33")		

## SOFFIT BIT FOR OVERHEAD SERVICE MASTS

The Soffit Bit is specifically designed to drill through a soffit in a single pass for an overhead mast. The Soffit Bit will drill through multiple materials including wood, nails, aluminum and more.

The Soffit Bit includes a built in arbor, wood or masonry bit.

Part#  
Wood Holesaw - 95224W  
Metal Holesaw - 95124M



COMING SOON! →



## OverDRIVE™ FAST BORING AUGER BITS

The Over-Drive boring auger bits are specifically designed to not bog down your battery drill. Designed with a 1/4" chuck and available in 3/4" and 7/8".

### Features:

- Available in 7" lengths
- 1/4" drill chuck
- Designed to put less strain on your battery drill

Part# AW34OD-3/4" x 7"  
# AW78OD-7/8" x 7"

## AUGER FILE

DON'T THROW AWAY EXPENSIVE AUGER BITS!

Save those precious auger bits from being another dull tool lying around your shop or work truck. Save time and money by sharpening your bits from the comfort of your own home.

### FEATURES:

- Top teeth for auger's main cutters
- Side teeth for sharpening tip

Part# AUFIE

## CARBIDE TIPPED HOLESAW KIT

The carbide tipped holesaw kit is perfect for cutting through wood or drywall.

Included in the kit:

- 2 1/2", 2", 1 3/4", 1 3/8", 1 1/8", 7/8" holesaws.
- Large and small arbor



Part# 96250



## 18" AUGER BITS

Part# AW3818	3/8"
Part# AW1218	1/2"
Part# AW11618	11/16"
Part# AW3418	3/4"
Part# AW7818	7/8"
Part# AW118	1"
Part# AW1418	1 1/4"

## 7 1/2" AUGER BITS

Part# AW3807	3/8"
Part# AW1207	1/2"
Part# AW11607	11/16"
Part# AW3407	3/4"
Part# AW7807	7/8"
Part# AW107	1"

## NAIL CHIPPER & STANDARD CHIP AUGER

### STANDARD SHIP AUGER



Precision ground cutting edge for fast cutting of clean holes in wood.

Burr-free lead screw for easy starts and pull-through without material build-up.

### NAIL CHIPPER SHIP AUGER

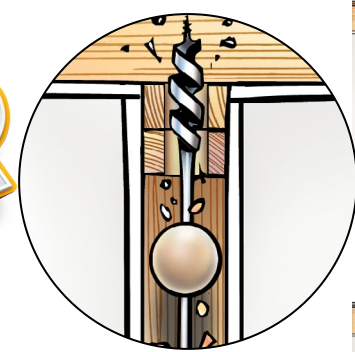


TRI-CUT design with 3 precision ground edges for fast, smooth cutting without resistance.

REDUCES NAILS TO CHIPS without grabbing and leaves a clean hole with minimal "blowout."

To order Tri-Cut Bits add a 'T' to the part #'s

# BUMPER BALLS



## AUGER SHAFT CENTERING TOOL

- No more bit walking, nail hitting, wall patching or carpet replacing
- Fits all 3/16" shaft auger bits
- Every kit includes two Bumper Balls: 1-1/2" and 2"
- New & Improved plastic model



BEFORE AFTER

Part# BB1520 - Bumper Balls 1 1/2 & 2"  
Part# BB1520-916 - Bumper Balls + 9/16"x54" Flex Auger Bit  
Part# BB1520-38 - Bumper Balls + 3/8"x54" Flex Auger Bit



FOLLOW US ON



WWW.RACK-A-TIERS.COM

SALES@RACK-A-TIERS.COM

TOLL FREE: 1 (888) 939-9991



# CO-PILOT



PART# 91720

## FEATURES:

- Enlarge any hole while keeping it centered
- Hole enlargement made fast and easy in under 2 min
- Versatile fit works with all arbours
- Can be used for wood, plastic, drywall (limitations set by hole saw)
- Small enough to fit in most hole saw kits
- Accompany with the Dust Bowl for mess free result

SEE IT IN ACTION HERE!



# MULTI BIT: STEP DRILLS

Hardened stepped bits for clean cuts in sheet metal, electrical boxes, arborite, etc. Handy for creating knockouts. Made from high grade cobalt.

- Part#
- MLT1 - Size: 1/8" - 1/2" 13 Step
  - MLT3 - Size: 1/4" - 3/4" 9 Step
  - MLT4 - Size: 3/16" - 7/8" 12 Step
  - MLT5 - Size: 7/16" - 1 1/8" 12 Step
  - MLT7 - Size: 1/4" - 1 1/2" 11 Step



# THE GUIDE-O



The Guide-O allows you to enlarge holes utilizing a pilot bit the same size as the existing hole. By using a pilot bit that matches up to the existing hole, the hole cutter will stay centered while drilling the new, larger hole.

## FEATURES:

- Fits most standard carbide and bi-metal hole cutters
- Kit includes 1/2", 3/4" and 1" pilot bits
- Made from carbon steel
- \*Hole Cutter not included



- Part#'s
- 94050 - 1/2"
  - 94075 - 3/4"
  - 94100 - 1"
  - 94200 - Guide-O Kit (1/2", 3/4", 1")
  - 94225 - 2 1/2" Shaft Replacement
  - 94226 - 2" Shaft Replacement
  - 94050B - 1/2" Bi-Metal
  - 94075B - 3/4" Bi-Metal
  - 94100B - 1" Bi-Metal
  - 94200B - Guide-O Bi-Metal Kit (1/2", 3/4", 1")

# High Performance CARBIDE TIPPED STEEL CUTTERS

- Part#'s
- 92HC4 - Steel Cutters 7/8"
  - 92HC8 - Steel Cutters 1 1/8"
  - 92HC14 - Steel Cutters 1 3/8"
  - 92HC20 - Steel Cutters 1 3/4"
  - 92HC22 - Steel Cutters 2"
  - 92HC24 - Steel Cutters 2 1/2"
  - 92KIT4 - 4-Pc Set: 7/8", 1-1/8", 1-3/8", extra pilot bit
  - 92KIT8 - 8-Pc Set: 7/8", 1-1/8", 1-3/8", 1-3/4", 2", 2-1/2", 2 extra pilot bits

## FEATURES:

- Ejector spring
- Tapered center drill
- Carbide tipping allows for repeated regrinding



## SDS BITS

- Part# 91814 - Masonry Drill Bit SDS 1/4"
- Part# 91838 - Masonry Drill Bit SDS 3/8"

# SHUGI'S SLIP DISCS - COPPER WASHERS

SMALL SOLUTION FOR BIG PROBLEMS

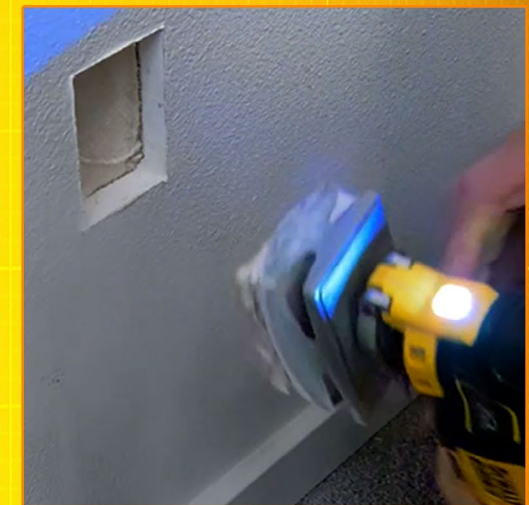
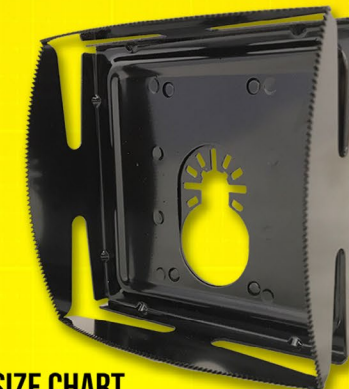


IN A BIND WITH YOUR HOLES AW? GET FREED UP WITH OUR COPPER WASHERS






- Part#
- 90512 - 1/2"
  - 90558 - 5/8" \*Packs of five



# Q-BIT: DRYWALL HOLE CUTTER



## Q-BIT SAW SIZE CHART

PART #	BLADE SIZE					
42710	2 1/8" X 3 5/16"	X	X			
42740	2 1/4" X 3 5/8"			X		
42700	2 3/8" X 3 3/4"				X	
42720	3 3/4" X 4"					X

The Q-Bit is a revolutionary hole cutter that allows you to quickly cut out device holes. The Q-Bit is built to work with any standard oscillating tool



# ROUND MULTI-TOOL HOLE CUTTER

CUT HOLES WITH PERFECT PRECISION

THE ONLY ROUND MULTI-TOOL HOLE CUTTER ON THE MARKET

- Available in 3 different sizes
- The only multi-tool hole cutter
- Easy to mount & change
- No harbour needed
- No center guide needed
- Clean & fast

- Part#
- 42670 - 2 1/2"
  - 42675 - 3"
  - 42680 - 4"



COMING SOON!

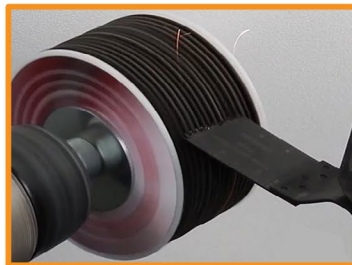
\*Patent Pending



# SHARP POG

## OSCILLATING BLADE SHARPENER

Quickly & effectively sharpens oscillating saw blades with the use of a hand drill.



Part# H91538

SEE IT IN ACTION HERE!



# ELECTRICIAN'S KIT

## 4 OF THE MOST POPULAR STYLE MULTI-TOOL CUTTING BLADES



- Includes 2x Bi-Metal Blades and 2x Wood/Plastic Blades
- Cuts very quickly and neatly through wood & drywall
- Notch out joists and studs for cables & pipes
- Cuts out cabinetry for device boxes
- Remove baseboards for heaters and devices
- Creates minimal dust and disturbance
- Cuts easily in awkward access situations



Made In China

Part# H4EMK - Electrician's Kit (Four Blades)

H5EMK - 5 Piece Blade Kit

H8475 - 4 Piece Blade Kit

Part# H32CJ1 - Japanese Tooth Blade 32mm

Part# H44BM1 - Bi-Metal Blade - 44mm

Part# H63CJ1 - Japanese Tooth Blade - 63mm

Part# H44TN1 - Titanium Alloy Bi-Metal Blade - 44mm

The Electrician's Kit has a great selection of blades that any electrician needs and would use on a regular basis! Featuring coarse and fine-tooth blades as well as bi-metal blades, this kit has everything you need for almost all applications.

Compatible with Milwaukee, DeWalt, Makita, Bosch & More

## WORK SMARTER NOT HARDER.

JUST ASK ANY MULTI-TOOL USER AND THEY ARE ALMOST GUARANTEED TO SAY "THEY DON'T KNOW HOW THEY GOT BY WITHOUT IT!"

Part# H44TN1



## 44MM ULTIMATE TITANIUM ALLOY BI-METAL SMART BLADE

The Titanium coated bi-metal blades are a great long-life blade solution. Made for cutting through wood AND nails and screws! The titanium coating helps reduce the heat build up on the blade, preserving the tooth design and maintaining a sharper blade for longer lasting cuts in wood!

NO MORE MESS EASY DISPOSAL OF DEBRIS WORKS WITH HOLE SAW UP TO 8" AND DRILL BITS TOO!

# Driller's Dust Bowl

THE FLEXIBLE DRILLER'S DUST BOWL COMPRESSES AGAINST THE WORK SURFACE AND TRAPS ALL DUST AND DEBRIS AS YOU DRILL. THE BOWL FITS YOUR DRILL AND HOLE SAW WITHOUT ANY ADJUSTMENTS NEEDED.



SEE IT IN ACTION HERE!

Part# 48000

Mfg Note:

You may enjoy a face full of drywall dust, but your customers might not. Put an end to "unprotected hole sawing" and wrap up with the Driller's Dust Bowl.

## Driller's Dustbowl PRO

NOW AVAILABLE WITH A VACUUM PORT FOR THOSE SUPER DUSTY

- The same great Dust Bowl now with a vacuum port for those super dusty jobs
- No more mess
- Works easily with your hole saw



Part# 48020

# HOLE-IN-ONE MULTI-FUNCTION HOLE CUTTER

SAVE YOUR LUNGS! CUTTING HOLES WITHOUT PROTECTION CAN BE HAZARDOUS TO YOUR HEALTH. PROTECT YOU AND YOUR CREW WITH THE HOLE-IN-ONE.



CUTS THROUGH:

- Plywood
- Sheetrock
- Fiberglass
- Fiber cement board
- Up to 20 GA. sheet metal
- Aluminum

PILOT BIT

Part# 90199



CARBIDE REPLACEMENT BLADES

Part# 90-VT



HSS REPLACEMENT BLADES

Part# 90-VH

Part No. 90200 - 1 7/8" to 9"

Part No. 90300 - 1 7/8" to 12"

Part No. 90400 - 1 7/8" to 17"



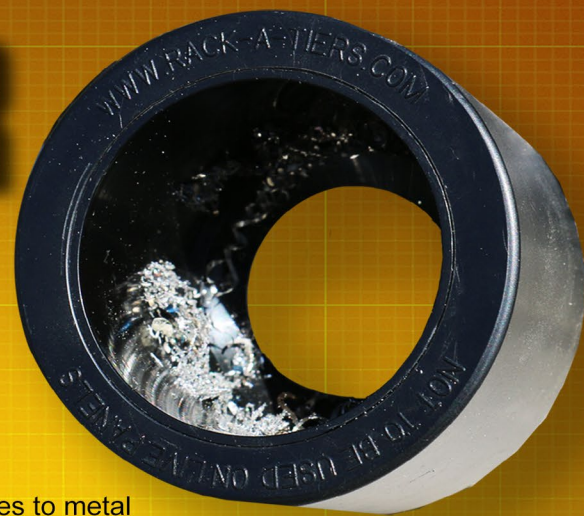
# CHIP CATCHER

The Chip Catcher adheres to metal surfaces using rare earth magnets. Metal shavings are attracted to the magnets embedded in the cylinder walls. Makes for easy clean up!



- Increases safety
- Magnet base attaches to metal surfaces & catches metal shavings
- Quick & convenient clean-up

Part# 84100



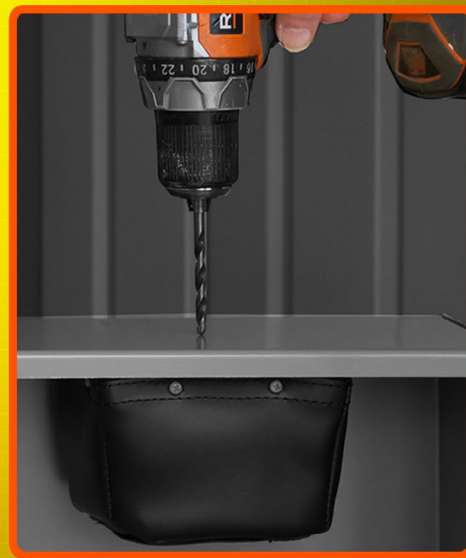
**\*NOT TO BE USED ON LIVE PANELS**

# DIRT BAG

Electrical Safety Drilling Tool

The Dirt Bag is specifically designed to eliminate metal shavings from spreading throughout a panel while drilling. Utilizing extra strong rare earth magnets in the frame, the Dirt Bag clings to the metal surface to catch all debris caused by drilling.

- Magnet in base of bag attracts filings
  - Increases safety
- Easily attaches to metal surfaces
- Made from non-conductive material
- Removable magnet included in bag pocket
  - Fits most panels



Part# 84000



**\*NOT TO BE USED ON LIVE PANELS**



# TREE HUGGER

TREE MOUNTED LIGHT/BOX BRACKET

Patent# US62/983,388  
Part# 85200

**YOUR LIGHTS WILL GROW UP WITH YOUR TREES!**

The Tree Hugger bracket shifts with your tree as it goes wider and taller saving it from cracking or breaking. It will also save you time and money by cutting out the need to adjust the light focus points as the tree grows.

The slide is what makes it unique as a tree grows wider and taller.

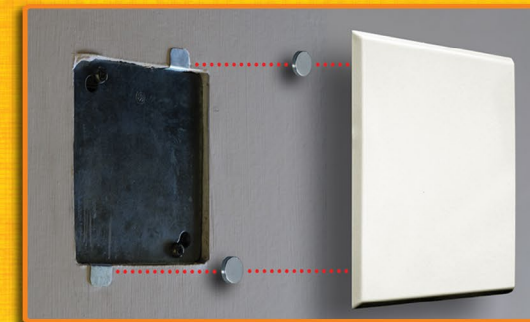


## 6.5 INCH PLATE

### FEATURES:

- Installs in seconds with rare earth magnets - snaps in place to metal clips (included)
- White decorative plate covers 5-1/2" square hole or electrical box
- Can also be used to cover a round hole with up to a 5-1/2" diameter
- Visually appealing white decorative plate - no need to paint metal covers

Part# D612



## DRYWALL TRAPPER

Part# 48400

The Drywall Trapper was created to save time and money for AV & electrical contractors. Cutting into a drywall ceiling is an extremely messy task. The Drywall Trapper has changed all of that. Now you can be in and out of retrofit projects in a fraction of the time and stay clean and tidy.

- Traps the fine particles and large pieces while working overhead.
- Heavy duty vinyl provides a clear viewport to the cutting area.
- Large enough to cut holes for large speakers and light fixtures.
- Rugged construction for the most challenging environments.

Width: 20.5cm (8.07inch) / Height 14cm (5.51inch) / Base: 7.5cm (2.95in)



**COLLAPSIBLE EASY ASSEMBLY DURABLE VINYL WINDOW SOLID CONSTRUCTION**



Part# 32050

# POKE-E

## TAME YOUR CABLES

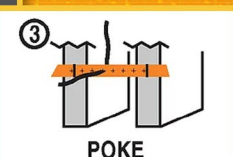
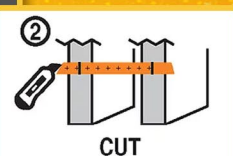
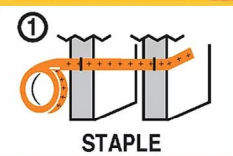
Dreamed up by an electrician who was tired of his wires being buried in the walls.. The **Poke-E** is a perforated strip that solves that issue by holding your cables in the exact place you intended them too. The Poke-E can be installed in the rough-in stage of construction in both residential and commercial applications.

**Install in 3 easy steps:** Nail, Cut and Poke

### Features:

- Made in USA
- Holds up to a 1/2" fixed diameter cable
- Patent Pending

**The Poke-E is only intended for use with Class 2 wiring only.**



# LASER PLUMB BOB



Looking for a better way to lay out complex ceiling and high bays? The Laser Plumb Bob, self leveling vertical laser from Rack-A-Tiers is the answer!

### FEATURES:

- Solid brass construction
- Factory aligned laser module calibrated to precise 0.15 accuracy
- Magnetic damping for quick stabilization
- Self leveling and aligning (vertically)
- Durable plastic carry case
- Battery included

### PART #

88455 -LASER PLUMB BOB

### REPLACEMENT PARTS

88-ARM - LASER PLUMB BOB ARM WITH MAGNET ATTACHED

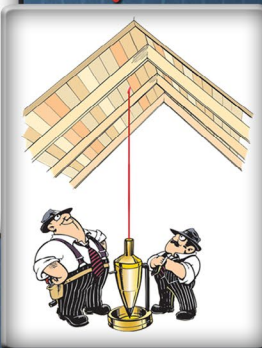
88-BASE - LASER PLUMB BOB BASE

88-BAT - LASER PLUMB BOB BATTERY CR 123

Before



After



### MFG NOTE:

For all commercial, industrial, or residential installations. Great for laying out ceiling lights.



Extremely powerful, yet delicate, magnetic wire snake for fishing wire through walls. It even works through insulation! This new version has a much stronger magnet and a smoother rolling surface.

SEE IT IN ACTION HERE!



### MFG NOTE

Any fiberfish can easily be threaded onto the magnet head. This will help push through dense insulation and guide through fire-block drill holes.

Part# 42800



The Magnespot is a reference point locator that gives users complete self-assurance before drilling, cutting, or any other task you may previously had to do blindly. Place the Magnespot Transmitter on the wall, ceiling, or floor that you need to drill.

Senses up to 30" through concrete & 60" wood frame wall

On the other side hold the Receiver in the general direction of the transmitter, the red LED arrows on the Receiver will indicate to you which direction to move. When all 4 Arrows illuminate, the Transmitter and Receiver are lined up within a 1/2 inch.

Part# 42900

SEE IT IN ACTION HERE!



# LASERLINE

REDUCE EFFORT IMPROVE PRODUCTION CUT LABOR EXPENSE

### FEATURES:

- Accurately install a pull line up to 200ft
- Cuts labor costs and improves production
- Ability to span over heavy and hard to move objects found in many commercial structures
- Replacement line and darts available



Tired of wiggling through a crawl space just to drag your wire to the other end? Fire the Laserline, attach your wire, then walk around and pull it across while standing. It's that easy!

The CO2 powered gun shoots a foam dart with a line attached to it up to 200ft. Stop climbing your ladder and moving it every ten feet to pull your wire across a t-bar ceiling. Pull your wire the entire distance in one shot with the Laserline!

### MFG NOTE

- The Laserline Kit includes 1 gun, 2 spools of line (1200 ft each), 2 darts and 2 generic CO2 cartridges.

### PART #

83000 - LASERLINE KIT

83001 - REPLACEMENT LINE 2-1200FT

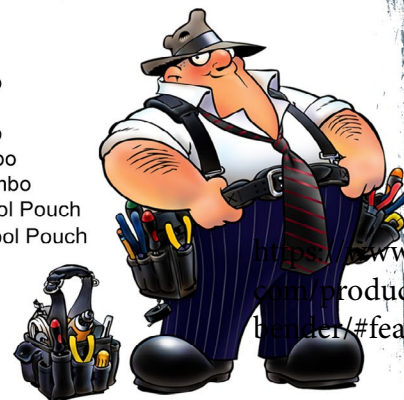
83003 - DART 3 PACK



# COMBO TOOL BELT

Part#  
43241 - Small Combo  
43242 - Medium Combo  
43243 - Large Combo  
43244 - X-Large Combo  
43245 - XX-Large Combo  
43246 - XXX-Large Combo  
43201 - Electrician's Tool Pouch  
43202 - Lrg 9 Pocket Tool Pouch

SEE IT IN ACTION HERE!



43401 - Small Belt  
43402 - Medium Belt  
43403 - Large Belt  
43404 - X-Large Belt  
43409 - XX-Large Belt  
43410 - XXX-Large Belt

## MOLDED AIR-CHANNEL SUPPORT BELT

### FEATURES:

- The first ever 'Molded Air-Channel Tool Belt' that offers incredible comfort, support, & ventilation for your back.
- The high density nylon 'Web Core' inside the padded belt provides strength to stitching & stress points.
- Metal rings are stitched to the belt's web core with high-density nylon webbing that provides the strongest way possible to attach suspenders.
- All stress points are reinforced with 'bar-tack' stitching along with heavy duty rivets.
- Double metal buckles that add strength and dependability.
- All of our belts and bags are made from double layered 1250 denier DuraTek fabric.
- Available in sizes from 26" to 54"

## SMALL 25 POCKET TRAY TOOL CARRIER

### FEATURES:

- 16 exterior pockets
- 9 interior compartments and pockets
- 1 qty 7" x 5.5" 12 compartment plastic tray
- 10.5" W x 10.5" L x 8" H
- Tape holder
- Includes shoulder strap

Part# 43707



## LARGE 44 POCKET TRAY TOOL CARRIER

### FEATURES:

- 29 exterior pockets
- 1 large clear pocket
- 14 interior compartments and pockets
- 2 qty 7" x 5.5" twelve compartment plastic tray
- Tape holder
- Includes shoulder strap

Part# 43706



## MOLDED AIR-CHANNEL SUSPENDERS

### INCLUDES:

- Adjustable thick molded foam shoulder pads
- 2" wide adjustable nylon straps
- Leather crossover divider
- Heavy duty spring hooks that attach to the rings on the molded Air-Channel belts

### FEATURES:

Our popular padded suspenders easily clip onto the sturdy metal rings that are built into our tool belts. The padded shoulder straps make these the ideal set of suspenders for your tool belt rig.

Part# 43606



## Introducing Boulder Bag<sup>®</sup> BUILT ROCK SOLID<sup>™</sup>

NEW!

Boulder<sup>®</sup> Bag Tool Belts are Rated #1 in the industry. The Tool Belt of choice for over 20 years!

3 YEAR WARRANTY



SEE IT IN ACTION HERE!



### FEATURES:

- Double layered 1000 denier Cordura<sup>®</sup> Classic Nylon
- Long lasting Velcro<sup>®</sup> Brand Velcro
- 13 Slots / 19 Pockets
- Thick nylon webbing to strengthen pockets and hold them open
- Double locking rivets
- High density, long lasting, comfortable closed cell foam - designed to keep a belt full of tools from rubbing you the wrong way
- Original one-piece boxed bottom design

## ULTIMATE ELECTRICIAN COMFORT TOOL BELT

The Boulder Tool Belts and Bags are designed for the professional that knows exactly what they need, and exactly where they need it. With Boulder you'll work better and faster using our well organized bags. Tools you use will always be within a quick, easy reach. Our design provides for simple adjustments and easy storage without spilling contents.

The 'Electrician' line of belts have been specifically designed for the professional Electrician. Pouches have plenty of pockets and loops to hold tools upright and accessible.

- Ergonomic design and superior material: best quality, very light, versatile, strong and sturdy
- Comfortable to wear. Material is high quality and waterproof.
- Machine washable
- Large capacity and functional: specifically designed for Electricians
- 5 sizes (S, M, L, XL) \*2XL available as a special order item



CUSTOM DESIGNS AVAILABLE ON ORDERS OF 50  
CALL US FOR MORE INFORMATION

Made In USA



PART#

46241 - Small/Black  
46242 - Medium/Black  
46243 - Large/Black  
46244 - X-Large/Black

## PROJOB Pants & Shorts

### Poly-Cotton Blend Multi-Pocket Protector Pants

#### FEATURES:

- Two hanging pockets that can be tucked away (One side has extra pockets, one side has tool slots)
- Tool pockets are reinforced with 100% Cordura
- Two adjustable hammer holders, cell phone pocket, two d-rings and pen pocket
- Opening on the inside for knee pads
- Material: 65% polyester, 35% cotton
- Color: Navy



### Mid Weight Shorts

#### FEATURES:

- Two hanging pockets that can be tucked away (One side has extra pockets, one side has tool slots)
- Tool pockets are reinforced with 100% Cordura
- Two adjustable hammer holders, cell phone pocket, two d-rings and pen pocket
- Material: 70% polyamide, 30% cotton
- Color: Grey



### Full Weight Multi-Pocket "High Vis" Protector Pants

#### FEATURES:

- Two hanging pockets that can be tucked away (One side has extra pockets, one side has tool slots)
- Tool pockets are reinforced with 100% Cordura
- Two adjustable hammer holders, cell phone pocket, two d-rings and pen pocket
- Opening on the inside for knee pads
- Material: 100% Cotton
- Color: Grey



### Mid-Weight Multi Pocket Pants

#### FEATURES:

- Contrasting tones construction pants with holster pockets that can be tucked in, one with extra pockets and one with tool loops
- The nail pockets are reinforced with Cordura<sup>®</sup>
- Deep side pockets with room for the hanging pockets
- Two adjustable hammer holders / Two D-rings
- Folding rule pocket with tool pocket and knife button
- Height adjustable inside kneepad Cordura<sup>®</sup> pockets

FOR SIZE INFORMATION AND PART NUMBERS VISIT [RACK-A-TIERS.COM](http://RACK-A-TIERS.COM)



# SNAP SACK

Part# 43150

## NEW CANVAS & LEATHER TOOL APRON



Most tool aprons are just made out of canvas, which is NOT the flimsy material you want full of screws, staples and countless other sharp objects – especially in such a sensitive area! If you want comfort, functionality and durability the Snap Sack is the apron for you. The leather lining will assure that you don't get poked, jabbed or shanked on the job!

### Features:

- No strings to tie or untie
- Clip to your belt with snap buttons or use the carabiners on your belt loops
- Leather liner helps protect from damage and poke throughs

## BUTT POUCH POCKET TOOL HOLDERS

### FEATURES:

- Quick to put on & COMFORTABLE!
- Tool pouches fit in your pocket
- Made of ballistic nylon
- Lightweight & durable



## GRANDE

Part# 43095



## PAPA GRANDE

Part# 43100



**MINI**  
Part# 43015



# Exploding

## GARBAGE CAN ULTRA

Part# 51020



The Exploding Garbage Can Ultra is the new and improved pop-open garbage can. Utilizing the same concept as our Classic Exploding Garbage Can but featuring a **reinforced hard bottom** for increased durability. Perfect for on the job, camping, tailgating or landscaping.

**UPGRADED HEAVY DUTY MATERIAL**

**REINFORCED HARD PLASTIC BOTTOM**



# EXPLODING Classic GARBAGE CAN

One of our classic tools that everybody loves, the Exploding Garbage Can comes in use every single day. This collapsible trash container, featuring an internal support spring that "springs into action", is made of heavy duty, tear resistant 600D Oxford Polyester fabric.

### FEATURES

- Size of 19" x 24" when open
- Size of 1 1/2" x 24" when collapsed



### FEATURES:

- Sturdy
- Comfortable
- Hook & Loop Straps

Part# 66455



## Gel Implanted

## KNEE PADS



Part# 51000

# BOOTIES

Booties available in bulk and bags of 6 pairs.

Part#

- 47095.B. - Booties (25 Pairs)
- 47099BB - Six Pack of Booties





# STUD BALL

## MAGNETIC STUD FINDER

The Stud Ball is a protected magnetic stud finder that will out-perform all other types of magnetic stud finder on the market. Unlike other steel stud finders, the Stud Ball can detect metal through 1/2" or 5/8" drywall or other thicker building materials. Will also work through ceramic tiling and up to 3/4" plywood paneling.

- Rare Earth magnets with 27 lbs of pull
- No batteries required
- Detects screws or nails in wood frame walls

Part# 52300



SEE IT IN ACTION HERE!



Part# 40905 - 1/2" thread  
40907 - 3/4" thread  
40910 - 1" thread

## PIPE SPINNER

WRAP A 10 FOOT PIPE IN 10 - 20 SECONDS!

The Pipe Spinner allows you to speed up the process of taping IMC, galvanized conduit or black iron conduit in mil tape for underground applications. Instead of taping the pipe by hand, simply attach The Pipe Spinner to your drill and have your co-worker hold the tape while you spin the pipe.

### FEATURES:

- 1/4" drill attachment for quick change drills
- Available in 3 sizes: 1/2", 3/4" and 1"
- Saves time and money



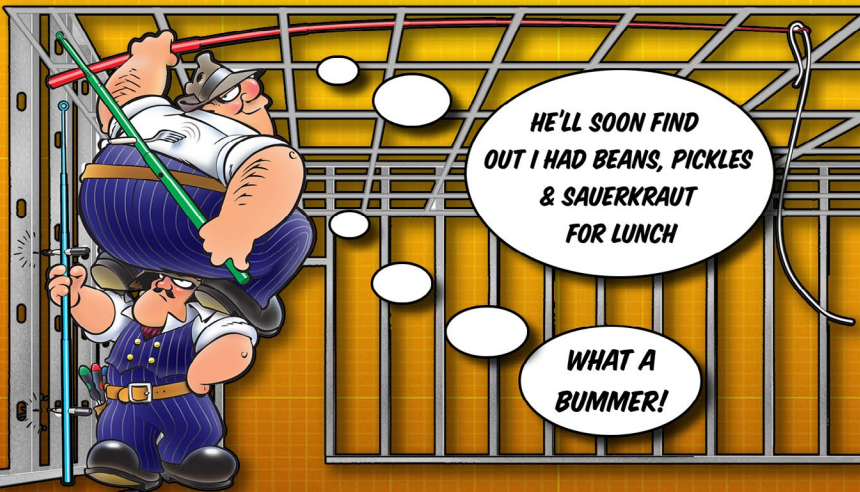
## THE ROUGH-IN STICK

The Rough-In Stick allows you to mark out devices conveniently and efficiently by utilizing specifically designed holes to fit your felt marker. The Rod also features a telescopic pole for those tricky fishes.

### FEATURES:

- Easily mark stud walls for device installation
- No need to use your tape measure while laying out devices
- Telescopic pole aids in pulling wire above ceiling grids and areas of limited access
- Extends up to 16'

MARK STUDS AT 12", 18", 42" 48" & 60"



Part# 82000



# GPS LIGHTLOCK

## ASTRONOMICAL TIMERS

Onboard GPS does all your programming & maintenance

GPS LightLock automatically sets your date/ time & location, programs the switch times for your location, self-recovers from power outages & keeps the clock timed to the GPS atomic clock. You'll never have to deal with controls maintenance again, and you never pay a fee to use the GPS system!

### Pays for itself many times over in servicing costs alone

Servicing controls is very expensive. Electricians perform hazardous work. They are well paid, as they should be. The retail price of GPS LightLock is a fraction of the cost of a single service trip charge to replace a photocell or re-program a timer.

GPS LightLock now offers custom programming to meet your requirements stored in memory forever, and you still won't have to program a timer ever again. Still self-recovers from power outages and still requires no user programming, maintenance or even batteries!

SEE IT IN ACTION HERE!



### Twist-Lock Astronomical Timer 120-277VAC

Installs in under a minute!  
The world's only fully automatic astronomical timer. Switches lights dusk-to-dawn anywhere in the world. Plug & play. Never needs programming. Self recovers from power outages. Direct replacement for twist-lock photocells.

Part# 85-GPS-MV-T



### Wire-In Astronomical Timer 120-277VAC

Our most popular model.  
Includes twist-lock astronomical timer plus wire-in twist-lock socket with 1/2" standard female thread.  
Direct replacement for all wire-in photocells and programmable timers.

Part# 85-GPS-MV-W



THE WORLD'S MOST ACCURATE TIME KEEPING SYSTEM

### GPS LightLock

- Self-Programming
- Maintenance Free for 15 Years
- Self-Recoveres from Power Outages
- No Servers, Software or Network Infrastructure
- Nothing to Learn, Monitor or Maintain

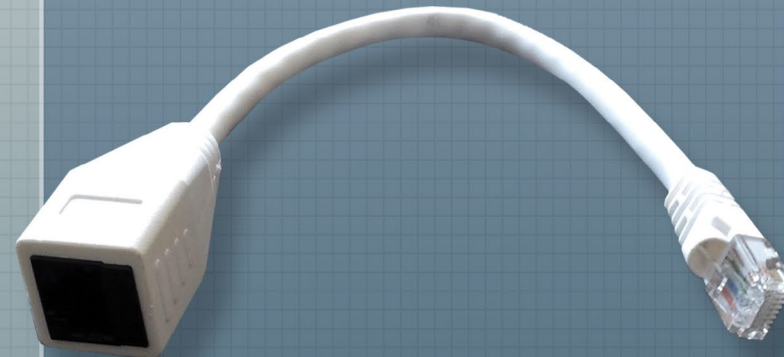
# TRACER WIZARD

## TONER ADAPTOR

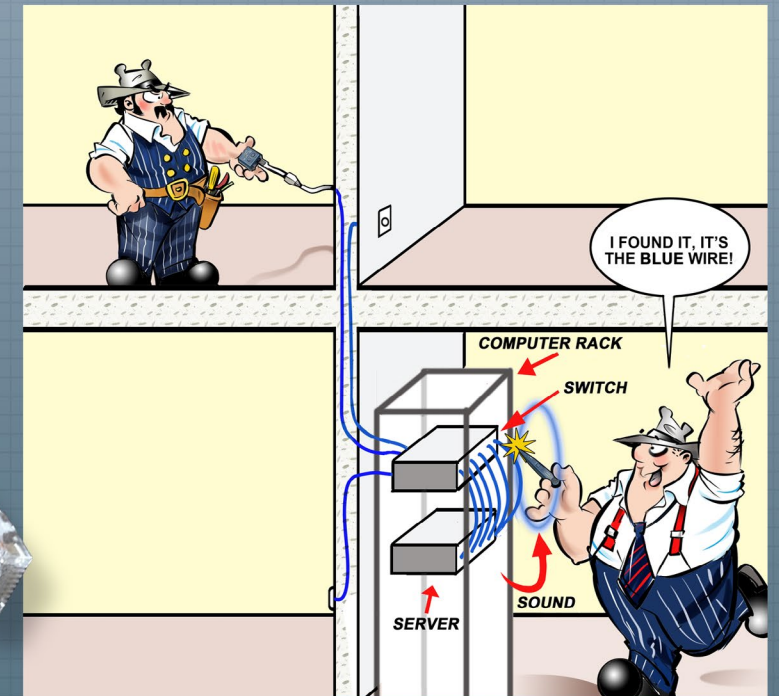
TURN YOUR ANALOG TESTER INTO A DIGITAL ONE!

### Features:

- Devices do not have to be taken offline to tone out
- Locating cables is fast and easy as long as the Wizard is connected between the tone generator & jack
- A must have tool for a toolbox
- No batteries required



Part# 99060





# FLASHLIGHTS



Part# 53600  
Stick Bug  
160 lumens

## THE STICK BUG

The Pocket Light just got brighter, stronger and better. Some call it supercharged! With the new technology of COB LED technology, it has 150/160 lumens - 2 times the amount of the original pocket light. With the durable and strong pocket clip and improved magnetic base, you'll never be left out in the dark again.

### FEATURES:

- COB LED
- 160 Lumens
- Operates on (3) AAA batteries
- Up to 7 hours run time
- Water resistant button
- Batteries included

## HEAD LIGHT

### USB RECHARGEABLE

Part# 54075

Bulb: COB LED

Max Output: 150 Lumens

3 Modes: High, Low and Strobe

Runtime: High (4 Hours) Low (12 Hours)

4-hour charge time

Impact and Water Resistance

## BAT LIGHT

The Bat flashlight has a durable, scratch and corrosion resistant anodized aluminum frame.

12" Bat Flashlight

Part# 53750

- 3W Cree LED 300 Lumens

- 3 x AAA Batteries Included

## THE SILVER BULLET

1The Silver Bullet is a light-weight, aluminum LED flashlight that charges in a 12V DC power outlet.

### FEATURES:

- CREE LED 300 Lumen
- Li-ion Battery
- Aluminum Alloy
- Recharge Time 2-3 hours

Part# 53800



## FIREFLY

Part# 53400

The Fire Fly is a compact aluminum flashlight that features 3 light outputs with and has an output of 120 lumens.

### FEATURES:

- 120 lumen output
- Light Modes: High output, low output, flash
- Mechanical zoom function
- 3 AAA batteries included



## PLUG MASTER

The Plug Master combines a full function dual-outlet circuit tester with 220V detection and multiple direction bubble-levels. Eliminate the need for multiple tools to test and straighten any wall outlets.

### FEATURES:

- Acts as horizontal and vertical level
- Use for diagnostics
- Perform quick wiring checks
- Panel identifies conditions shown by LED indicators
- Removable side panels cover outlet during insertion



Part# 99102

## AC SENSOR & ULTIMATE AC SENSOR

Prevent electrical shock with this simple tool to locate dangerous defective grounds. This handheld device helps you determine the presence or absence of 50-1000 Volts AC in insulated wires, wall receptacles, fuses, junction boxes, and voltage carrying electrical systems. The bright, red glow indicates AC voltage.

### FEATURES:

- Non-contact detection of 50-1000 VAC
- Includes 2 replaceable AAA alkaline batteries
- Senses voltage without metallic contact
- Outstanding safety instrument



Part# 99000 (Red Glow - No Sound)

Part# 99001 (Red Glow - w/Sound)

Part# 99150

## DUALCHECK™ NON-CONTACT VOLTAGE TESTER

Save time and money with 2 popular testers in 1 unit - featuring a Non-Contact Voltage Detector on one end and GFCI Outlet Tester on the other.

### FEATURES:

- 360 degree LED indication
- Loud beeping audible indication
- Exclusive 1 LED readout. No Charts. Instant results
- On/Off button



## AC SPLITTER

The AC Splitter features a receptacle and GFCI tester as well as the ability to measure the current through the measuring rings.



### Features:

- Voltage measurement ring
- Current measurement ring (x10 and x1)
- GFCI button
- Socket connection indicators
- Current maximum: 15A
- Input voltage: 120V

Part# 99020

Part #45600



**Before**



**MAGPIE**  
Bilateral Laser Measurer

FIND THE CENTER OF A ROOM FOR EASY LIGHT INSTALLATION

PIE - WHO SAID PIE??

PUT THE ICE CREAM AWAY! IT'S NOT THAT KINDA PIE.

7FT
9FT



BACK BY POPULAR DEMAND!

# LADDER MATE



\*Tools sold separately  
Part# 65300

## MULTI-USE LADDER ORGANIZER

### TOOL HOLDER & PAINT TRAY WITH ADJUSTABLE DIVIDERS

- EASY TO ATTACH
- ADAPTER CLIPS INCLUDED
- WORKS WITH MOST FIBERGLASS, ALUMINUM & WOOD STEP LADDERS



SEE IT IN ACTION HERE!



# STEPDEK

## A MUST HAVE TOOL FOR ANYONE WHO WORKS ON LADDERS!

The Stepdek easily attaches to the ladder rung which provides a wider platform for users to stand on.

### PRODUCT FEATURES:

- Helps prevent ladder fatigue
- Provides a safe & comfortable step to stand on
- Durable aluminum design

Rubberized non-slip comfort pad  
Light weight & fits in tool bags  
Easily attaches to most A-frame ladder  
Reusable  
A portion of each sale is donated to help those in need



Part# 65250

# Aerial Tool Bin



The Aerial Tool Bin offers a safe and efficient way of storing your tools at waist height while on a variety of Man-Lifts. It is designed to be used on: Aerial Platforms, Scissors Lifts, Boom Lifts, Scaffolding, Swing Stage Railings, and Mast Climbers.

Part# ATB1312



### FEATURES:

- Includes a handy staple puller and pry bar for multi-purpose use!
- Ruler for quick on the job measurements.
- Use as a quick carpenter's square.
- Holds staples in tight spots and will open a beer bottle at the end of



STAPLE PULLER!



HOLDS STAPLES!



PRY BAR!



RULER!



BEER OPENER!



SEE IT IN ACTION HERE!



Part# 52455



## NEEDLE NOSE WIRE STRIPPERS

Sometimes referred to as the best wire strippers on the market, the Croc's Needle Nose Wire Strippers will impress even the toughest critics. These strippers have countless features, each designed to make your job easier and more productive.

### FEATURES:

- Glow in the dark handles
- Ergonomic handle design for maximum comfort
- Needle nose tips
- Strip from 22-10 AWG
- Barrel Sleeve Crimper
- NMSC cutter near the "nose" of the stripper
- 8-32 and 6-32 bolt cutters

Part# 47000

SEE IT IN ACTION HERE!



Needle nose pliers  
Strong wire cutters  
6-32 and 8-32 screw cutter

14/2 and 12/2 NMD stripper

Strips from #10 - 22 AWG

Quick crimper

Glow in the dark tipped handles

Needle nose pliers

Strong wire cutters

Glow in the dark tipped handles

Strips from #8 - 22 AWG

SEE IT IN ACTION HERE!



6-32 and 8-32 screw cutter



## V-CUTTER

### ELECTRICIAN'S ADD-ON CABLE STRIPPER

#### STRIPS CABLE IN OR OUT OF ELECTRICAL BOXES WITH EASY TO PUSH ACTION

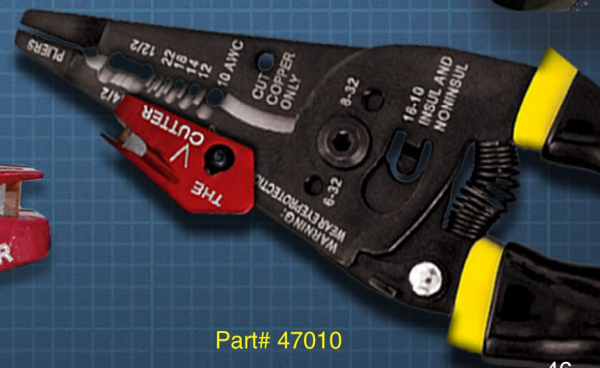
One of the smartest inventions to come to market this decade is the V-Cutter. This simple little blade attaches to most wire strippers and allows you to strip cable with a single swipe.

### FEATURES:

- A new way to strip NMSC cable
- Easily attaches to most wire strippers
- Strips cable in or out of electrical boxes with action
- Virtually eliminates nicking or cutting the wire insulator



Part# 47010





# PANEL BUDDY

## KNOCKOUT SYSTEM

Tired of trying to remove knockouts? Let the Panel Buddy take care of them for you. This simple but genius tool removes knockouts in half the time, with half the effort.



### FEATURES:

- Kit removes knockouts on Electrical, Security, Alarm, and Datacom Panels
- Works with lipped and non-lipped panels



Part# 7WBK100

# Tie Lips

Spend more time installing and less time picking up. The Tie Lips will hold your cable ties conveniently on your belt.

### Features

- Keeps your ties in place
- Quick and easy dispensing
- Holds different types and sizes
- Includes handy belt clip



Part# 43800

# NUT BLASTER

## UNIVERSAL WIRE CONNECTORS

- Fast, easy installation
- Prevents sore fingers and cramping hands
- Available in two sizes

### Part#

72101 - XL

(Fits all brands yellow, tan & red twist on wire connectors)

72102 - XXL

(Fits all brands large grey & blue twist on wire connectors)



## NUT BLASTER

### In-Store Display

Contact us to order this counter display. Other counter displays also available.

Part# 67119

# SLUGGO OX

THE SLUGGO-OX IS THE ULTIMATE GROUND ROD DRIVING TOOL.

Just one piece and incredibly strong. It delivers the kind of power and strength you need to easily install ground rods, rebar, & other metal objects.



"I THINK IT'S TIME WE GOT A SLUGGO-OX!"

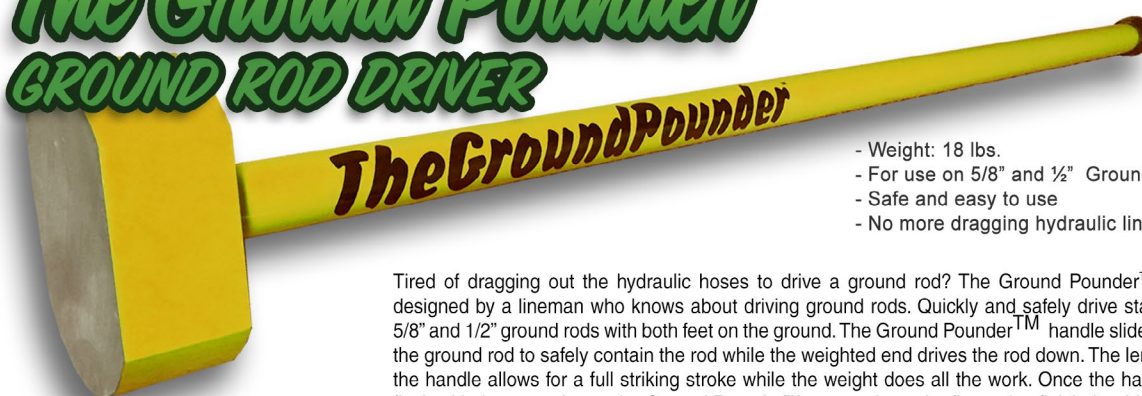
### FEATURES:

- Incredibly strong: made of 3" hot-rolled, heat-treated, hardened steel
- 3 1/2" bore to accept 3/4" and 5/8" ground rods
- 80% more striking surface
- Yellow zinc chromate surface to deter rust



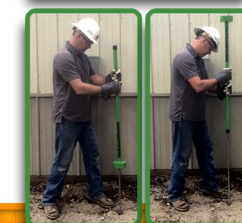
# The Ground Pounder

## GROUND ROD DRIVER



- Weight: 18 lbs.
- For use on 5/8" and 1/2" Ground Rods
- Safe and easy to use
- No more dragging hydraulic lines

Tired of dragging out the hydraulic hoses to drive a ground rod? The Ground Pounder™ was designed by a lineman who knows about driving ground rods. Quickly and safely drive standard 5/8" and 1/2" ground rods with both feet on the ground. The Ground Pounder™ handle slides over the ground rod to safely contain the rod while the weighted end drives the rod down. The length of the handle allows for a full striking stroke while the weight does all the work. Once the handle is flush with the ground, turn the Ground Pounder™ over and use the flat end to finish the drive.



Part# 67150

# CLIP WHACKER

THE CLIP WHACKER IS SPECIFICALLY DESIGNED FOR HAMMERING IN CLIP ON BEAM CLAMPS. STOP SMASHING YOUR FINGERS, USE A CLIP WHACKER.

- Fits 1/8-1/4" flange thickness clips
- Much safer
- Doesn't take up much space in tool bag (just like another screwdriver)
- No more flying clips!!
- No more hammering fingers!!
- Work smarter not harder
- MADE IN USA



Part# 54100



# MAG DADDY

## MAGNETIC FASTENERS



MAG DADDY MAGNETIC FASTENERS UTILIZE ULTRA-STRONG MAGNETS TO STRAP WIRE AND CABLE. MAG DADDY MAGNETS WILL STAY ATTACHED THROUGH OIL, GREASE, PAINT OR DIRT. A VARIETY OF CONFIGURATIONS ARE AVAILABLE TO SUIT YOUR NEEDS.

### CABLE HOLDERS



**Magnetic Cable Holder (10 Pack)**  
Part# RM050BK - 1/2" Black  
Part# RM050WT - 1/2" White  
Part# RM075BK - 3/4" Black  
Part# RM075WT - 3/4" White  
Part# RM100BK - 1" Black  
Part# RM100WT - 1" White

### CABLE TIE MOUNTS



**Magnetic Cable Tie Mount (10 Pack)**  
Holds Standard Zip Ties  
Part# RM110BK - 10 lb Black  
Part# RM110WT - 10 lb White  
Part# RM115BK - 15 lb Black  
Part# RM115WT - 15 lb White

### MAGNET MOUNT



**Magnet Mounts (10 Pack)**  
Part# RM164SL - 19 mm/16 lb Silver  
Part# RM265SL - 23 mm/26 lb Silver  
Part# RM266SL - 26 mm 26 lb Silver



**Magnetic Clamp (10 Pack)**  
Magnetic Strength: 15 lbs.  
Part# RM051BK - 1/2" Black



**Female Magnet Mount**  
1/4-20  
Part# RM420FM



**3/4" Wide Cable Mount (10 Pack)**  
15 lbs Black  
Part# RM215BK



**Mini Magnet Cable Tie Mount (10 Pack)**  
Color: Black  
Magnetic Strength: 5 lbs  
Part# RM020BK



**Top J-Hook (10 Pack)**  
360° Rotation  
Part# RMJ075T - 3/4"  
Part# RMJ131T - 1 5/16"  
Part# RMJ200T - 2"



**Side J-Hook (10 Pack)**  
360° Rotation  
Part# RMJ075S - 3/4"  
Part# RMJ131S - 1 5/16"  
Part# RMJ200S - 2"



**Cable Hanger**  
Cable Hanging Tool  
Part# RM300HT



**Magnetic Bridle Ring**  
Part# RM125BR - 1.25" 1/4-20  
Part# RM200BR - 2" 1/4-20



**1 x 7/16" Zip-Tie Pipe Mount**  
Part # RM1716BK

# VAN MAGNETS

Got a disorganized van? Snap some Van Magnets into place to hang tools, material, etc. to keep your vehicle nice and tidy.



10 lbs 4 Pack  
Part# RV010



25 lbs 3 Pack  
Part# RV025



50 lbs 2 Pack  
Part# RV050



\*All Van Magnets Include carabiner



# CABLE MOUNTS

The Rack-A-Tiers Saddle Support is a saddle where you put a screw through an d strap wire with tie wraps. Let's be honest, Rack-A-Tiers didn't reinvent the wheel with this one, but we did reinvent the price.

Another exciting, already available product we're adding are the 4-way adhesive cable tie mounts in 2 different sizes. You know what these are for. Buy them from us if you would like to.

#### Part# RC215WT

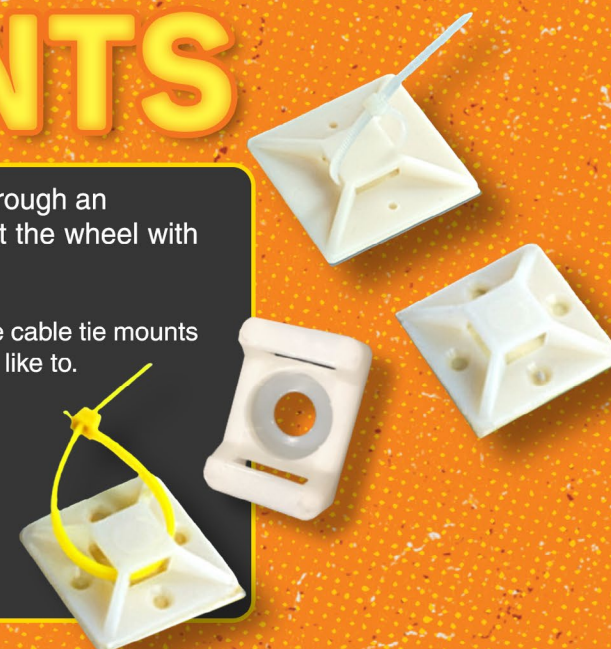
Cable Tie Saddle Support White  
1.5" (100 pcs)

#### Part# RC4150WT

Cable Tie Mount 4-Way Adhesive White  
1 1/2" (100 pcs)

#### Part# RC410WT

Cable Tie Mount 4-Way Adhesive White  
1" (100 pcs)



## CHASE STRAP CONDUIT BRACKET



The Chase Strap secures the short piece of conduit extending from one room to another through a sheetrock wall or other barrier such as a concrete riser. The strap is made from galvanized steel and is available in multiple sizes.

**Part#**  
RCS100 - 1" Chase Strap  
RCS200 - 2" Chase Strap  
RCS400 - 4" Chase Strap



UL Listing E507150



**Winnie Industries**  
MANUFACTURER OF FASTENING SUPPORTS



### MAGNETIC CABLE TIE MOUNTS



**16 LB Magnetic**  
Cable Tie Mount - UV Black  
Part# RMW016BK



**16 LB Magnetic**  
Cable Tie Mount - UV Black  
Part# RMW016WT



**26 LB Magnetic**  
Cable Tie Mount - White/Natural  
Part# RMW026WT



**26 LB Magnetic**  
Cable Tie Mount - UV Black  
Part# RMW026BK



**100 Lb Magnetic Mount**  
1/4-20 Threaded  
Part# RMW1420F



**26LB Magnetic**  
1 inch wide, Grip Tape Mount - UV Black  
Part# RMW226BK

### MAGNETIC BRIDLE RINGS



**26 Lb Magnet**  
3/4" Magnetic Bridle Ring, Small Standoff, Zinc Plated  
Part# RMW075BR



**100 Lb Magnet**  
1 1/4" Magnetic Bridle Ring, Small Standoff  
Part# RMW125BR



**100 Lb Magnet**  
2" Magnetic Bridle Ring, Small Standoff  
Part# RMW200BR



## FILLERS & CONNECTORS

### KO KILLERS: PLASTIC KNOCKOUT FILLERS

Fits thin (1/32") and thick (1/8") wall thickness.

#### Features:

- No tools required
- Snap in and out with ease
- Non-conductive, safer



Part# KOK50 - 1/2" Filler (50/bag)  
Part# KOK75 - 3/4" Filler (50/bag)  
Part# KOK100 - 1" Filler (25/bag)  
Part# KOK125 - 1 1/4" Filler (25/bag)  
Part# KOK150 - 1 1/2" Filler (25/bag)  
Part# KOK200 - 2" Filler (25/bag)  
Part# KOK999 - Assorted Fillers Kit (25/bag)



### RAT 500

Rapid Fire NMSC connector (100 Pack)

Suitable for all 1/2" knockouts  
Fast and Easy. No tools required

#### Features:

- 100/bag
- Single cables
- Two cables
- Install from outside

### RAT 750

Rapid Fire NMSC connector (50 pack)

Suitable for all 3/4" knockouts  
Fast and Easy. No tools required

#### Features:

- 50/bag
- Single cables
- Install from outside



Part#  
RAT500 1/2" Connector  
RAT750 3/4" Connector

RAT750 - 3/4"	Single Cable:	8/3, 6/3
RAT500 & TT500 - 1/2"	Single Cable:	14/2, 14/3, 12/2, 12/3, 10/2, 10/3
	Two Cables:	14/2, 14/3, 12/2

### TT500

NMSC Two Way 1/2" Connector (100 Pack)

Installs from inside and outside the box

#### Features:

- 100/bag
- Single cables
- Two cables

Part#  
TT500



### STUD BUDDIES

(100 Pack)

Why Square Bushing? 70%  
More cross sectional area!  
More cables, easier pulls.

- One piece
- One hand installation
- Fits all standard steel studs & punches
- Fire rated V.O.
- Faster, easier to use

Part#  
SB220 - ROUND  
SB240 - SQUARE



## BUCKETS

Our same great connectors now available in bulk bucket form!

#### Part#s

RAT500.B2 - 1/2" Connector Qty. 200  
RAT500.B4 - 1/2" Connector Qty. 400  
TT500.B2 - 1/2" Tom 2-Way Connector Qty. 200  
TT500.B4 - 1/2" Tom 2-Way Connector Qty. 400



## LEVEL JACK

#### HOW DOES IT WORK?

Alignment tabs reach across wood/metal studs to level low voltage outlets with A.C. boxes.

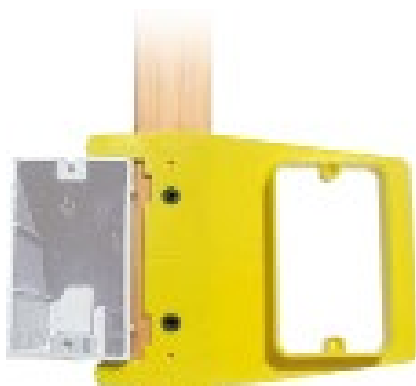
#### NO TAPE MEASURE • NO LEVEL REQUIRED

Available in 1/2" and 1" rise

If you're fussy about your rough-in layout, the Level Jack makes life easy. If you're not, no one will notice because you can't screw up with the Level Jack.

Just clip it on to the AC box and screw it down. No level, no tape measure, no special boxes, no special fittings required. Level Jacks fit most AC boxes.

Part#  
LJ50R - 1/2" (30 pack)  
LJ100R - 1" (15 Pack)



# SHIM MY BOX

Part# S1203  
9" Length Tubes for Electrical Switches (4/bag)



Tired of twisting wire into a coil or trying to track down washers to shim your plug or switch? With the Shim My Box all you have to do is cut the length you need from this straw like piece.



## AIRCRAFT CABLE & WIRE CRIMPS

- Available in 500 and 1,000 Feet.
- No need to go anywhere else - Buy it from us!
- Diameter of cable: 1/16"

#### Part# SC500

Aircraft Seismic Cable 500'

#### Part# SC1000

Aircraft Seismic Cable 1000'

#### Part# SCC116

Aircraft Seismic Cable Crimps (100 pack)



### Features:

- Quickly and easily supports multiple electrical cables.
- Hold up to 24 cables with one support.
- Greatly reduces labor time.
- Innovative design allows multiple cables to be installed in confined areas with ease.
- Rigid plastic injection molded
- US Patent Pending
- Made in the USA

Part#s  
H2024 - Homer Helper Single  
H2024.Bulk - 100 Pack



Width: 20.5cm  
Height: 14cm  
Base: 7.5cm



## CABLE CHASE

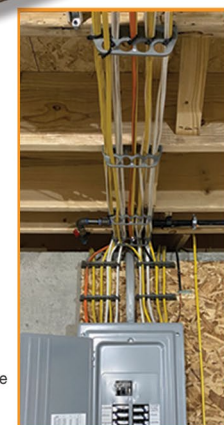
The Cable Chase is designed to provide a straight, clean path for wires with no obstructions. The brackets allow you to greatly reduce friction and stress on wires being pulled through the holes due to the hole design.

SEE IT IN ACTION HERE!



- ULC Listed
- Patented design
- Accepted by IEA
- Follows the same guidelines as typical wire fill calculation
- Leaves room for future expansion

Part#  
CC9024 - Cable Chase Single  
CC9024.P10 - 10 Pack  
CC9024.Bulk - 100 Pack



# CROWS FEET



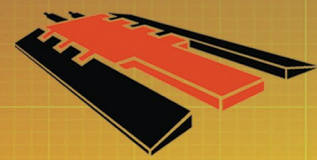
## 3/8" Metal Flange

Crow's Feet are a galvanized steel ceiling flange designed to accommodate 3/8" threaded rod.



\*100 per box  
Part# SCF38





# ELASCO PRODUCTS



## EXTREME CABLE PROTECTION

**DURABLE**

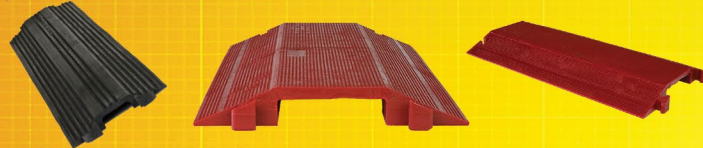
**LONG LASTING**

**LIGHTWEIGHT**

**EASY TO USE**

### DROP OVER COLLECTION

Elasco Drop Overs are quick and easy to install, protecting everything from small wires to large pipes. These cable management Drop Overs come with a single channel, but can accommodate a multitude of pipes or wires within their protection.



### GLOW COLLECTION

Elasco now offers the most visible glow in the dark cable protectors in the industry.



### LITEGUARD COLLECTION

Commonly used in vehicle or pedestrian settings, the LiteGuard collection provides invaluable protection. Although smaller in size and weight, these products are still designed for significant load bearing strength.



### ULTRAGUARD COLLECTION

The Ultraguard collection offers an extra low profile and push buttons attached to lid, ensuring extra lid closure and cable security.



### HEAVY DUTY COLLECTION

The Heavy Duty collection has been protecting cables and wires for over 25 years and is available in one, two, three, and five channel cable guards. Offering extra load bearing capacity, compared to the lighter duty - the MightyGuard collection will stand the test of time.



### XTREME DUTY COLLECTION

The XtremeGuard Collection offers multiple channels able to accommodate 4" size hoses, cables, and pipes. With bonus 2" size channels, this patent pending design is the first and only product like it on the market, able to withstand almost any load capacity requirement.



FOR FULL SIZING CHARTS, PART NUMBERS AND MORE INFORMATION PLEASE VISIT [Rack-A-Tiers.com](http://Rack-A-Tiers.com)

### ULTRA-SIDEWINDER CABLE PROTECTION SYSTEMS

**FEATURES:**

- Articulation pieces offer flexible design - curves, corners & s-curves are easily made while maintaining a completely flat profile.
- Simple installation. No tools required.
- Available in black, yellow, brown, and gray.
- Fully-customizable length - From 4.5" to an unlimited length.

For part numbers visit [Rack-A-Tiers.com](http://Rack-A-Tiers.com)

### TEMPORARY CABLE GUARD

The Temporary Cable Guard withstands heavy vehicle traffic without damaging cable. Easily anchored with concrete screws if needed. The Temporary Cable Guard helps you restore services quickly by allowing you to run temporary cables over most any surface. It reduces truck rolls and eliminates downtime due to cable cuts, storm damage, traffic or roadway activities.

For part #s visit [Rack-A-Tiers.com](http://Rack-A-Tiers.com)



CableClear is a patented new cable management product for wall mounted TV's enables you to quickly and easily hide eyesore TV cables inside the stud wall without any special DIY skills. Add cables seamlessly at any point and time after the CableClear kit is installed. CableClear creates a 50mm (2") conduit inside the wall cavity so that you can fish the cable through and hide them completely. There is no damage to the wall during cable installation so there's no repairing or re-painting afterwards.

#### FEATURES:

- Kit includes: elbow wall clips, hose, hole saw, plumb bob, and nose cone
- Designed for all stud walls 70mm (2 3/4") and thicker
- Fits plaster/drywall up to 13mm (1/2") thick
- Hose length is fully adjustable
- Additional cables can be added later
- Creates a sealed duct
- Components comply with UL 94V-0 plastics flammability standards

CC001 - Cable Clear Kit

CC002 - Cable Clear Extension Kit

\*For replacement part numbers visit [Rack-A-Tiers.com](http://Rack-A-Tiers.com)



## TEMP-IT

### Features:

- Fits in most residential LED recessed cans
- Uses A-19 Medium Base LED light bulb only
- Sold in boxes of 12 (lamps not included)

"TEMP IT" is a product designed for temporary lighting for LED recessed can installation. This temporary lighting socket allows for immediate, convenient lighting during construction without using the costly led trims. "Temp IT" fits in most residential led recessed cans. Just plug the orange LED socket into your LED recessed can and attach an A-19 medium base led light bulb. Messy supplemental cord lighting and big stand up halogen lamps are no longer a necessity.



Part# 99050



## PROLock Single End Extension Cord

- Molded ProLock connectors will not pull away from the cord body; offers extra water resistance.
- Automatic locking feature: insert male end into Pro Lock connector and push together to lock. Pull collar down to unlock.
- High impact polycarbonate on both housing & collar guarantees hard service, with extra heavy duty use.
- Pro Lock Pull Strength: 80 lbs horizontally or vertically.

- Lighted Amber Power Check plug & ProLock connector indicates power is running through the cord and connector.
- Special cold weather (-58°F) PVC jacket guarantees flexibility in temperatures well below freezing

### Extension Cord Connector

- Specially designed automatic locking feature: insert male blades and pins into the Pro Lock connector and push together to lock; pull the collar down to unlock.
- We use high impact polycarbonate on both housing & collar to guarantee hard service, extra-heavy duty use.
- Pull Strength: 80 Lbs horizontally or vertically.

Part#

- 98000 - ProLock Cord Connector Black
- 98050 - ProLock 50' 12/3 Extension Cord
- 98100 - ProLock 100' 12/3 Extension Cord



## DAVIS MULTI-PLUG 1 PLUG | 9 CONFIGURATIONS

### BUILT FOR 30-60 AMPS 125/208/250 VOLTS

Part# 99175

SEE IT IN ACTION HERE



#### 9 NEMA CONFIGURATIONS IN 1

The Davis Multi-Plug more utility, convenience, and versatility than any other.

#### REDUCE INVENTORY

Always have the right plug in the truck and on the shelf, guarantee efficient use of your time when you need it.

#### ONE TOOL ASSEMBLY

Our plug can be fully assembled with nothing more than a flat head screwdriver. No specialty tools required.

#### NO MORE STRIPPED SCREWS

Our electrical cord damp system uses a simple hose clamp to secure the cord. Only one screw to be tightened and no plastic to be stripped.



14-30	14-50	14-60
14-30 1 PH, 125/250 V, 30 AMP	14-50 1 PH, 125/250 V, 50 AMP	14-60 1 PH, 125/250 V, 60 AMP
15-30 3 PH, 250 V, 30 AMP	15-50 3 PH, 250 V, 50 AMP	15-60 3 PH, 250 V, 60 AMP
18-30 3 PH, 120/208 V, 30 AMP	18-50 3 PH, 120/208 V, 50 AMP	18-60 3 PH, 120/208 V, 60 AMP



# EFERGY ELITE Classic Wireless Energy Monitor

Part# EF003



## SAVE UP TO 15% ON YOUR ELECTRICITY BILL THROUGH GREATER AWARENESS!

The Elite Classic is our latest and renewed version of our Elite Wireless Power Monitor. It updates every 10 seconds so you can instantly see the impact of turning a light on or off, boiling the kettle or using your tumble dryer. It has an innovative memory function that allows you to see how much you have used today, yesterday and in the last week or month. The Elite Monitor also displays your daily average so you can see when you are using more electricity than normal and see how your average usage reduces as you change the way you do things - Great for sub panels to monitor tenant energy use.

## Accessories

### 200A Current Sensor

Additional sensor for measuring current up to 200 amperes. Works with the elite or e2. Perfect for whole house applications where a 200 ampere service is installed. Split core design easily fits around wire sizes up to #4/0 AWG without breaking connections.

Part# EF012



### Hub Online Accessory Kit

Monitor your home energy use online in real-time engage hub accessory kit. Online platform FREE of charge with no subscription or monthly fees Access your energy data anytime, from anywhere

Part# EFH01



# E-MAX ENERGY MONITOR



Introducing the E-Max energy monitor from Efergy! This improved energy monitor features a stylish, large 7.9" display and improved battery life. View your energy data in real time with the easy to understand display and energy use speedometer. The E-Max also includes a USB-2.0 port to download your energy consumption data.

Kit Includes: E-Max Display, (2) CT Sensors and the Transmitter

### Features:

- See your current energy use with a color-coded speedometer
- Look up historic data: yesterday, last week, last month, etc.
- Input your higher kW rate period to make sure you are not using high energy appliances, etc. at peak times
- Portable unit allows you to walk around the house to monitor usage
- Sleek free-standing stand or wall mounted display
- Download your energy data using a USB stick

Part# EF005

**WE HAVE THE POWER TO FIND YOUR MONITORING SOLUTIONS**  
WE WANT TO COVER ANY SCENARIO YOU CAN THINK OF. THIS EXPANDING CATEGORY IS ON THE UPSWING, LET US HELP YOU FIND THE RIGHT DEVICE.



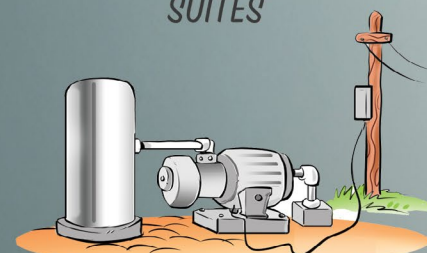
SUITES



MOBILE HOME PARK



EV STATIONS



REMOTE LOADS



FARMS



SOLAR

# CIRCUIT IQ

## STOP GUESSING, START MAPPING

Know Your Power with Circuit IQ:

- ✓ 100% Accuracy
- ✓ Test from Any Distance
- ✓ Map Multiple Circuits Simultaneously



### 99400 - Startup Kit

9 Mappers, Wireless Gateway, Wireless Label Printer, Commercial Carrying Case



### 99405 - Mapping Expansion Kit

30 Mappers

## This is NOT Your Father's Breaker Finder

Able to locate more than one breaker at a time, it can map entire power systems fast. Tracing power on multiple circuits at the same time from any distance, accurately. It automates electrical system labelling and electrical panel directory creation, so you are not manually doing all of that work.

What are you powering? Where are you powering it from? What loads are on the same line? Is there extra room for additional loads? How do I kill power quickly? These are just some of the questions it can answer for you. Filter through breakers quickly with keywords like the room/floor, appliance, or equipment name using our search bar. Understand legacy buildings like you understand new builds. Get ahead of your competition, know your power!

Introducing,



SEE IT IN ACTION HERE!



# THE TOP HAT



As a simple box cover, the Top Hat is used instead of a blank cover with several important advantages. It allows installers to leave wires that enter the junction boxes extending straight. With the depth of the Top Hat there is no need to coil wires and stuff them into the smaller parts of the junction box. This will save time during installation and more importantly during troubleshooting. Additionally, this high volume cover makes it easier to access the contents of any junction box.

Now Available For special order in multiple colors for various applications. Contact Rack-A-Tiers for more details.

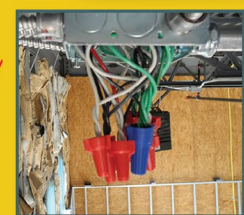
Part#'s  
TC1400-5 - Top Hat 5 Pack  
TC1400 - 50 Pack



## FEATURES

- ULC Approved
- Adds 35.8 cubic inches to the existing junction box
- Plenum Rated
- \*Patent Pending

SEE IT IN ACTION HERE!



BEFORE



AFTER



# Rack-A-Tiers

## COMPLETE LINE OF Driver Bits

PART#	DESCRIPTION	LENGTH
70226BR	Impact Bit, Double-Ended, Phillips #2 & Robertson #2 (Blue/Red)	6"
70224BR	Impact Bit, Double-Ended, Phillips #2 & Robertson #2 (Blue/Red)	4"
70216RG	Impact Bit, Double-Ended,Robertson #2 & #1 (Red/Green)	6"
70214RG	Impact Bit, Double-Ended, Robertson #2 & #1 (Red/Green)	4"
70126GB	Impact Bit, Double-Ended, Robertson #1 & Phillips #2 (Green/Blue)	6"
70124GB	Impact Bit, Double-Ended, Robertson #1 & Phillips #2 (Green/Blue)	4"
7032RI	Robertson Impact Bit, Square #3 (Black)	2"
7031RI	Robertson Impact Bit, Square #3 (Black)	1"
70266R	Robertson Impact Bit, Robertson #2 (Red)	6"
70244R	Robertson Impact Bit, Robertson #2 (Red)	4"
7022RI	Robertson Impact Bit, Square #2 (Red)	2"
7021RI	Robertson Impact Bit, Square #2 (Red)	1"
70166R	Robertson Impact Bit, Robertson #1 (Green)	6"
70144R	Robertson Impact Bit, Robertson #1 (Green)	4"
7012RI	Robertson Impact Bit, Square #1 (Green)	2"
7011RI	Robertson Impact Bit, Square #1 (Green)	1"
70266B	Impact Bit, Phillips #2 (Blue)	6"
70244B	Impact Bit, Phillips #2 (Blue)	4"
70166B	Impact Bit, Phillips #1 (Light Blue)	6"
70144B	Impact Bit, Phillips #1 (Light Blue)	4"
7022PI	Impact Bit, Phillips #2	2"
7021PI	Impact Bit, Phillips #2	1"
7012PI	Impact Bit, Phillips #1	2"
7011PI	Impact Bit, Phillips #1	1"



PART#	DESCRIPTION	LENGTH
70430P	Square #4	3"
70360BK	Robertson Square #3 (Black)	6"
70340BK	Robertson Square #3 (Black)	4"
70260R	Robertson Square #2 (Red)	6"
70240R	Robertson Square #2 (Red)	4"
70230R	Robertson Square #2 (Red)	3"
70220R	Robertson Square #2 (Red)	2"
70160G	Robertson Square #1 (Green)	6"
70140G	Robertson Square #1 (Green)	4"
70130G	Robertson Square #1 (Green)	3"
70120G	Robertson Square #1 (Green)	2"
70040Y	Square #0 (Yellow)	4"
70030Y	Robertson Square #0 (Yellow)	3"
70261BL	Phillips #2 (Blue)	6"
70241BL	Phillips #2 (Blue)	4"
70141LB	Phillips #1 (Light Blue)	4"
72126GR	Drive Bit, Double-Ended, Square #1 & #2 (Red/Green)	6"
72124GR	Drive Bit, Double-Ended, Square #1 & #2 (Red/Green)	4"
72204BY	Double-Ended, Phillips #2 & 1/4" Slot Bit (Blue/Yellow)	4"
72075	Strutter Socket	



## Racky Bits Counter Display

Contact us to get a counter display for your Racky Bits. These compact displays are available in two sizes to best suit your needs. Both displays include an anti-theft lid.

12 Slot: Part# 70SKE12  
24 Slot: Part# 70SKE24



PART#	DESCRIPTION	LENGTH
70961BK	Hex 1/2" (Black)	6"
70931BK	Hex 1/2" (Black)	2.5"
70861BR	Hex 7/16" (Brown)	6"
70831BR	Hex 7/16" (Brown)	2.5"
70761BL	Hex 3/8" (Blue)	6"
70731BL	Hex 3/8" (Blue)	2.5"
70661Y	Hex 5/16" (Yellow)	6"
70631Y	Hex 5/16" (Yellow)	2.5"
70561R	Hex 1/4" (Red)	6"
70531R	Hex 1/4" (Red)	2.5"
70466RY	Malco Dual-Sided Magnetic Driver, Hex 1/4" & 5/16"	6"
70464RY	Malco Dual-Sided Magnetic Driver, Hex 1/4" & 5/16"	4"
70462RY	Malco Dual-Sided Magnetic Driver, Hex 1/4" & 5/16"	2"
70486YB	Malco Dual-Sided Magnetic Driver, Hex 5/16" & 3/8"	6"

PART#	DESCRIPTION	LENGTH
70484YB	Malco Dual-Sided Magnetic Driver, Hex 5/16" & 3/8"	4"
70482YB	Malco Dual-Sided Magnetic Driver, Hex 5/16" & 3/8"	2"
72564RY	Double-Ended, Hex 1/4" & 5/16" (Red/Yellow)	4"
72000	Magnetic Bit Holder	
72030	Wood Lag Driver Bit	
72022	Magnetic Sleeve	

IMPACT DRIVER SOCKET ADAPTOR SET		
PART#	DESCRIPTION	LEN.
70325	1/4", 3/8", 1/2"	2.5"

## ALLEN HEAD DRIVER BIT KIT

These high quality hex key allen bits are 6" long for increased versatility. Also included in the kit is a 3/8" socket adapter.

The 1/4" shank allows you to use any standard drill or quick change chuck.



PART#	DESCRIPTION
72600	Allen Head Driver Bit Kit





# MALCO

Part#  
70462RY - 2" Red/Yellow  
70464RY - 4" Red/Yellow  
70466RY - 6" Red/Yellow  
70482YB - 2" Blue/Yellow  
70484YB - 4" Blue/Yellow  
70486YB - 6" Blue/Yellow

## DUAL-SIDED MAGNETIC HEX DRIVERS



Quickly change between 1/4in. and 5/16in. hex sizes with Malco's unique, exclusive, dual-sided magnetic hex drivers. The reversible hex socket fits over a 1/4-inch magnet-tipped, ball locking hex shaft, and can be quickly reversed to change sizes. Eliminate troublesome buildup of metal shavings in the hex tip with the "Easy Clean Magnet". Just swipe with a glove or shop towel to clear any metal shavings. Tested torque of the reversible hex chuck driver design is equal to one-piece drivers.



## THE STRUTTER

Installs 1/2" bolts into electrical strut channel for maximum strength. The Strutter Socket can be turned sideways, put into the strut, then slid over to the 1/2" bolt and tightened up. Before, you could only install the 3/8" bolt, but now, for heavy loads and maximum strength, use The Strutter Socket.

Part# 72075



## HOLDSABIT

Every moment during a project that you spend looking for the right tool is wasted time and results in frustration and bad decisions. The ingenious HOLDSaBIT slips on or off a drill in seconds. The HOLDSaBIT will hold any 1/4" hex shank item as well as pencils, nut drivers and hex shank drill bits. Tips and bits are easily inserted and removed.

- Sold in a kit with bits or sold separately.
- Hold any 1/4" hex shank items as well as pencils, drill bits, etc.
- 4 channels to fit a variety of length bits

Part# 70000 (Bits Not Included)

Part# 700.kit (includes 1-70140G, 1-70240R, 1-70241BL, 1-70531R, 1-70631Y & 70214RG)



## NoDrop Tools *Be in Control*

Our Screw-Holding Screwdrivers were built to solve the everyday problem of removing/starting screws and not having confidence in our tools. They are made by Technicians for Technicians. These are great for mounting hardware and terminating leads. These are also a must for working with screws where gloves are required but dexterity is needed. When you use our products you will have confidence and "Be in Control".



- The unique design allows you to effortlessly attach to the screw without the worry of dropping it.
- The slim "pen" style fits easily into your pocket.
- The handle and release rod are both made with non-conductive materials.
- Mitigates risk while working in gloves and at heights.

### Made In USA

For more information and product numbers visit our web site.

# EXTENDO NUT DRIVER



The Extendo Nut Driver kit is designed to adapt a standard 1/2" conduit into an extension nut driver for threaded rod. Utilizing the concept of a hollow shank nut driver, the Extendo Nut Driver gives you the flexibility to cut the conduit any length you need to drive the nut up the full length of threaded rod. With this tool on hand, you no longer need to buy multiple size hollow shank nut drivers! Save yourself time and money with this complete extension nut driver kit.

- Kit includes: 7/16", 9/16" sockets, and 1/4" adaptor
- No need to buy multiple hollow shank nut drivers
- Drill attachment designed for 3/8" chuck, will fit quick change drills

- Made from hardened steel
- Adaptable to any length nut driver needed
- Extends up to 10'

Part# NT1050

## PICQUIC



**SIXPAC plus**  
- 7 - 3" LENGTH, 1/4" HEX POWERBITS  
- 11.5" TOTAL LENGTH  
PART# P88001



**DASH 7**  
- 7 - 2" LENGTH, 1/4" HEX POWERBITS  
- COMES IN 4 BRIGHT NEW COLORS  
PART# P05001



**STUBBY**  
- SOLID, COMFORTABLE, HIGH TORQUE HANDLE  
- 6 HIGH QUALITY 1.3" LENGTH INSERT BITS  
- IDEAL FOR WORK IN CLOSE QUARTERS  
PART# P91000



## Robertson



**GREEN ROBBY**  
#5-6-7 SQUARE DRIVE  
PART# SD110G



**RED ROBBY**  
#8-9-10 SQUARE DRIVE  
PART# SD210R



**BLACK ROBBY**  
#12-13-14 SQUARE DRIVE  
PART# SD310BK



## DEMAGNETIZER

MAGNETIZES OR DEMAGNETIZES DRIVER BITS, TOOLS AND SMALL STEEL PARTS INSTANTLY!  
Part# 70988

## MAGNETIC BIT HOLDER

QUICK CHANGE MAGNETIC BIT HOLDER  
PART# 72000



# Reemer Bit

Double-Ended #2 Phillips & #2 Robertson Pipe Reaming Bit

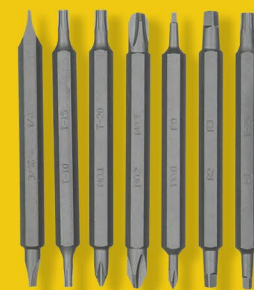


- Reams all sizes of conduit
- Tighten your connectors and coupling
- Fits Power Drill chucks and quick release

Part# 72422RB

SHARP ENOUGH EDGES TO  
DO THE REAMING BUT WON'T  
CUT UP YOUR FINGERS!

SEE IT IN ACTION HERE!



## ROLgear

MULTIBIT RATCHET SCREWDRIVER / 15 TIPS (DOUBLE ENDED BITS)

- Smooth and silent ratcheting
- Single-handed ratchet adjustments from forward, locked, & backward
- Ergonomic, cushion comfort handle
- Magnetic components for drop-safe bit changing
- Stainless steel bit adapter

- Slotted: 3/16", 1/4"
- Square: 1, 2, 3, 4
- Phillips: 1, 2, 3, 4
- Torx: 10, 15, 20, 25

PART# SDR14





# The Original ELECTRICAL REFERENCE BOOKS EVERYONE NEEDS AN UGLY'S ON THE JOB REFERENCE

- Mathematical formulas
- National electrical code
- Wiring configurations
- Conduit bending
- Voltage drops
- Life saving first aid procedures
- Much, much more

Part#  
73214-21 - Safety & NFPA 70E  
73215-20 - Electrical References  
73216-20 - Motors & Controls  
73218-20 - Conduit bending



## TAKE A LOOK AT WHAT'S ON THE WAY!

### LADDER SAVER

The Ladder Saver is a simple cover that will extend the life of your ladder and at the same time keep your work area clean and tidy. Tired of UV rays damaging your ladder? The Ladder Saver will protect it.

Customers giving you dirty looks for dragging in mud and snow on your ladder? The Ladder Saver will fix that. The Ladder Saver will be available in 6, 8 and 10 foot sizes. We will also be able to provide custom company branding on the Ladder Saver!



See website for part numbers.

These products are made to order.  
Call 1 (888) 939-9991 for more details

### DAYTONA RACK

#### FEATURES:

- Sporty looking rear load rack
- Easily removable for access to bed
- Works with tri-fold tonneau covers
- Allows you to open tailgate and tonneau cover
- Gives a straight, flat load surface instead of tying to a curved tailgate



See Web Site For Part Numbers

# INVENTOR'S CORNER

FIND YOURSELF FLIPPING THROUGH THE RACK-A-TIERS CATALOG WISHING YOU HAD THOUGHT OF THAT TOOL, OR FRUSTRATED THAT YOU THOUGHT OF THAT IDEA FIRST?



Well, here's your chance to put your ideas into action. Rack-A-Tiers launched Inventor's Corner for creative folks like you to pitch ideas and read testimonials from past inventors.

Even if Rack-A-Tiers is unable to add your idea to our product line, we have the experience and knowledge to provide advice for your next move as an inventor.

Check out the Inventor's Corner at [RACK-A-TIERS.COM/INVENTORS](http://RACK-A-TIERS.COM/INVENTORS) and who knows maybe in next year's catalog your product could have a full-page spread.

**RACK-A-TIERS.COM/INVENTORS**

**RACK-A-TIERS CURRENTLY PAYS OUT ROYALTIES TO OVER 30 INVENTORS. ARE YOU NEXT?**

## NEED A SPECIFIC PRODUCT? WE'LL HELP YOU FIND IT

EZ-ROLL... BIG EZ...  
X-DISPENSER... RACK-A-TIERS..  
TUG WISE... DONUT DISPENSER..  
PIE WINDER.. PIZZA SPINNER

RACK-A-TIERS HAS OVER 25 YEARS OF EXPERIENCE IN THE ELECTRICAL MANUFACTURING INDUSTRY AND IF WE DON'T HAVE WHAT YOU ARE LOOKING FOR **WE WILL FIND IT FOR YOU.**

TEXT: 888-939-9991  
OR EMAIL: [SALES@RACK-A-TIERS.COM](mailto:SALES@RACK-A-TIERS.COM)



#### SEARCH DEPARTMENT





# ATTENTION ALL WHOLESALERS!

SPRUCE UP YOUR SHOWROOM WITH A GREAT LOOKING DISPLAY FROM **RACK-A-TIERS**



24" x 48" Paper Wall Panels (2 panels pictured)  
Part# WALLPAPER48OR



H4EMK Display  
(Buy 10 to Receive)



Metal Floor Display  
Part# METAL-FLOOR-DISPLAY



Racky Bits Counter Display  
Part# 70SKE12

\*Tools Not Included

Pouch Display  
Part# MINI-DISPLAY-C

## FOLLOW US

@RACKATIERSTOOLS

@RACKATIERS

@RACKATIERS

@RACKATIERS

WHAT'S WITH  
THE NEW LOOK?

DIDN'T YOU HEAR?  
I'M A SOCIAL MEDIA  
INFLUENCER NOW.



NEW TOOLS  
 TOOL TALK

WEEKLY GIVEAWAYS  
 CONTESTS & MORE

| SALES@RACK-A-TIERS.COM | TOLL FREE: 1.888.939.9991 |