



TABLE OF CONTENTS

Page	Description	Page	Description	Page	Description
61	4Reel Bracket	18	Folding Utility Knife	11	Quattro Flex Auger Bits
18	6.5 Blank Plate	30	Fusion Fish Tape	2	Rack-A-Tiers
36	AC Sensor	24	GD Center Finder	5-6	Racky Driver Bits
36	AC Splitter	38	GPS LightLock	51	RAT500 & RAT750
9	Aerial Tool Bin	40	Ground Pounder	55	Reel-End
52	Aircraft Cable & Wire Crimps	13	Guide-O, The	7	Reemer Bit
25	All-American Pull Buddies	52	H2 Homer Helper	8	Robertson Screwdrivers
6	Allen Head Driver Bit Kit	35	Head Light	8	Rolgear Screwdriver
12	Auger - Standard & Tri-Cut	23	Heat Tank	31	Ropematic Pro
12	Auger Bit File	11	High Speed Steel Flex Bits	37	Rough-In Stick, The
24	Bag Pipers	7	Holdsabit	14	Round Multi-Tool Hole Cutter
35	Bat Flashlight	16	Hole-In-One - Hole Cutters	15	Sharp Pog
20	Bend-All	55	Hooker - Wrench Adaptor	52	Shim My Box
22	Bender's Friend	21	Hoppy Bender, The	14	Shugi's Slip Discs - Copper Washers
56	Big E-Z	6	Impact Driver Socket Adaptor	35	Silver Bullet, The
8	Bit Kit	11	Javelin	22	Skybender
50	Booties	32	Jet Level	40	Sluggo-Ox
48	Boulder Bag	27	Jimbo, The	60	Smart Load 500
32	Breaker Lok	58	JK Stud Reels & Floor Units	49	Snap Sack
20	Bulldog Benders, The	21	Kick Wedge	26	Snatch Strap
12	Bumper Balls	50	Knee Pads	32	Solder M8
49	Butt Pouches	51	KO Killers	59	Spool Mac
59	Cable Caddy & Cable Truck	9	Ladder Mate	9	Staple Shark
52	Cable Chase	33	Laser Plumb Bob	9	StepDek
44	Cable Clear	34	Laserline	35	Stick Bug
54	Cable Mounts	25	LB Wire Guide	55	Stick, The
59	Caddy Mac #1 & 2	51	Level Jacks	26	Sting Ray
13	Carbide Tipped Steel Cutters	27	Locknut Wrench, The	7	Strutter, The
12	Carbide Tipped Wood Hole Saw Kit	53	Mag Daddy	37	Stud Ball
54	Chase Strap	34	Magnepull	51	Stud Buddies Connectors
49	Chillbana	34	Magnespots	47	Support Belt
17	Chip Catcher	8	Magnetic Bit Holder	47	Suspenders
42	Circuit IQ	8	Magnetizer / Demagnetizer	11	Switch Bits
40	Clip Whacker	7	Malco Dual Sided Hex Driver	30	Telescopic Rods
60	Clyde's Cart	46	Mark My Wire	38	Temp-It
47	Combo Tool Belt & Pouches	13	Multi-Bit Step Drills	57	Thomas Wheeler
13	Co-Pilot	7	NoDrop Tools	39	Tie Lips
19	Copper Wire Strippers	39	Nut Blaster XL and XXL	51	Tom Two-Way Connector
10	Croc's Needle Nose Wire Strippers & Jr.	27	Nut Snugger	47	Tool Carriers
52	Crow's Feet	43	Open Splice	43	Top Hat Cover
44	Davis Multi-Plug	12	OverDrive Bits	38	Tracer Wizard
17	Dirt Bag	39	Panel Buddy Knockout Kit	18	Tree Hugger
16	Driller's Dust Bowl	24	Penguin Puller Sr & Jr, The	32	Trunktie
36	Dual Check Non Contact Voltage Tester	46	Phase It Right	61	Tug Wise
19	Easy Stripper	8	Picquic Screwdrivers	62	Ugly's Electrical Reference Books
41	Efergy Products	37	Pipe Spinner	36	Ultimate AC Sensor
15	Electrician's Kit Blades	23	Pipe Vipers	45	U-Phase Wire Marker
41	E-Max Energy Monitor	29	Plastic Coated Fiberfish	53	Van Magnets
55	ER-GO 50	29	Plastic Coated Glowfish	10	V-Cutter
50	Exploding Garbage Can	36	Plug Master	54	Winnie Magnets
8	Extendo Nut Driver	33	Poke-E	19	Wire Peeler
56	E-Z Roll & E-Z Roll Multi	30	Polyester Fish Tape & Cases	58	Wire Pod
37	Ferret, The - Fishing Tool	48	ProJob Pants & Shorts	56	Wire Reel
28	Ferret, The - Inspection Camera	44	ProLock	60	Wire Spool Hand Cart
29	Fibersnakes 3/16", 1/4", 1/2", 5/16"	31	Puck, The	57	Wire Tub
26	Fish Heads	25	PulLee	25	Wire Vortex
26	Flex Flyers	35	Pulse Tracer	55	X-Dispenser
24	Flex Puller	14	Q-Bit Drywall Hole Cutter		

ALL-IN-ONE MULTI-USE WIRE DISPENSER

A collection of wooden cable reels of various sizes, some with black plastic 'Rack-A-Tiers' stands attached to their front flanges. The reels are arranged in a row, showing different cable types including black, white, red, and blue. The stands are black plastic with multiple mounting holes and a central handle cutout. The text 'Rack-A-Tiers' is printed vertically on the stands. The background is a solid dark grey.

RUSTPROOF! RELIABLE! RUGGED! EASY TO SET UP!

"Simple but effective. It's funny how this "Where has this been all my life?" "Can fit many application needs like fiber"

★★★★★

★★★★★

★★★★★

★★★★★

★★★★★

★★★★★

★★★★★

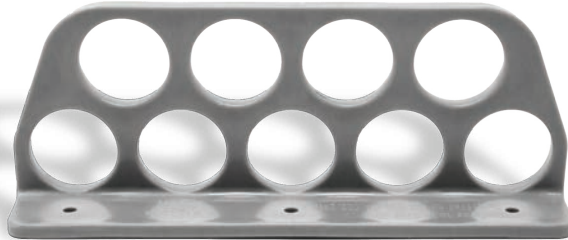
2

CHECK OUT WHAT'S NEW! & **WHAT'S COMING**



CABLE CHASE

Secure multiple cable runs at once.
See page 52

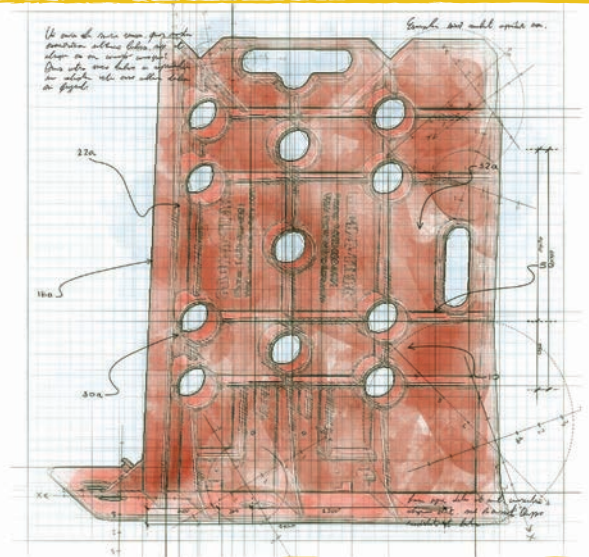


IN STOCK

COMING NEXT YEAR

RACK-A-TIERS II

YEARS IN THE MAKING, A
BIGGER RACK IS ON THE WAY.



OPEN SPLICE

Bring open splices up
to code with this
foolproof box.
See page 43.



ERGO-50 SPOOL CARRIER

Save your fingers, carry reels
with this on the go handle.
See page 55.

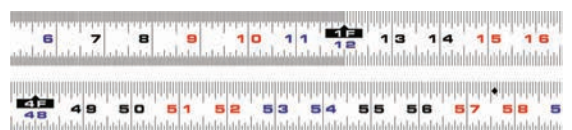


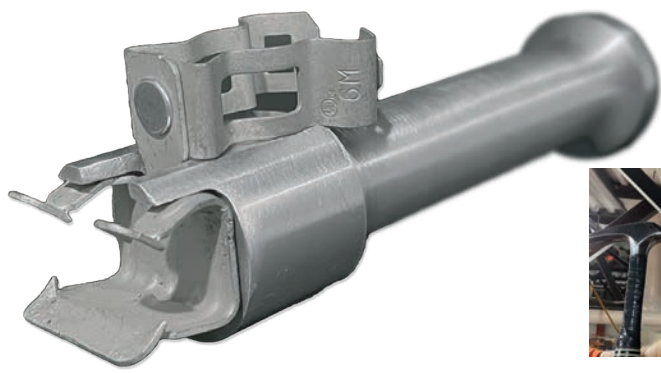
WIRE PEELER

Drill operated wire stripper
for recycling copper.
See page 19.

IT IS COMING.

A TAPE MEASURE FOR ELECTRICIANS





CLIP WHACKER

Beam clamp holding tool.
See page 40.



BIT KITS

Available in Rough-In and Finishing Kit.
See page 8



IN STOCK

PULSE TRACER

The most affordable circuit tracer on the market.
See page 35.



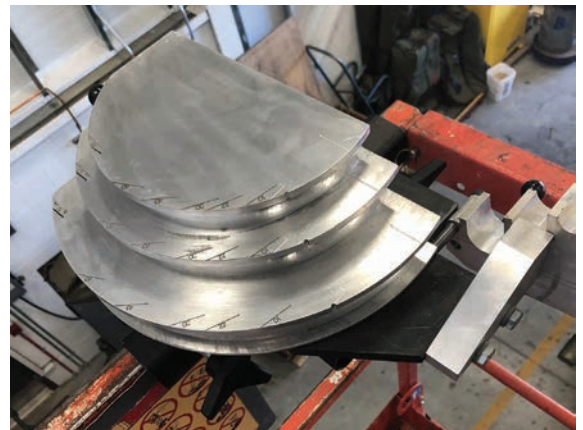
BENDER FRIEND

Lightweight portable 90-degree PVC bending template.
See page 22.



SKY BENDER

Lift mounted conduit bender.
See page 22.



Rack-A-Tiers

COMPLETE LINE OF Driver Bits



PART#	DESCRIPTION	LENGTH
70226BR	Impact Bit, Double-Ended, Phillips #2 & Robertson #2 (Blue/Red)	6"
70224BR	Impact Bit, Double-Ended, Phillips #2 & Robertson #2 (Blue/Red)	4"
70216RG	Impact Bit, Double-Ended, Robertson #2 & #1 (Red/Green)	6"
70214RG	Impact Bit, Double-Ended, Robertson #2 & #1 (Red/Green)	4"
70126GB	Impact Bit, Double-Ended, Robertson #1 & Phillips #2 (Green/Blue)	6"
70124GB	Impact Bit, Double-Ended, Robertson #1 & Phillips #2 (Green/Blue)	4"
7032RI	Robertson Impact Bit, Square #3 (Black)	2"
70266R	Robertson Impact Bit, Robertson #2 (Red)	6"
70244R	Robertson Impact Bit, Robertson #2 (Red)	4"
7022RI	Robertson Impact Bit, Square #2 (Red)	2"
70166R	Robertson Impact Bit, Robertson #1 (Green)	6"
70144R	Robertson Impact Bit, Robertson #1 (Green)	4"
7012RI	Robertson Impact Bit, Square #1 (Green)	2"
70266B	Impact Bit, Phillips #2 (Blue)	6"
70244B	Impact Bit, Phillips #2 (Blue)	4"
70166B	Impact Bit, Phillips #1 (Light Blue)	6"
70144B	Impact Bit, Phillips #1 (Light Blue)	4"
7022PI	Impact Bit, Phillips #2	2"
7012PI	Impact Bit, Phillips #1	2"

PART#	DESCRIPTION	LENGTH
70430P	Square #4	3"
70360BK	Robertson Square #3 (Black)	6"
70340BK	Robertson Square #3 (Black)	4"
70260R	Robertson Square #2 (Red)	6"
70240R	Robertson Square #2 (Red)	4"
70230R	Robertson Square #2 (Red)	3"
70220R	Robertson Square #2 (Red)	2"
70160G	Robertson Square #1 (Green)	6"
70140G	Robertson Square #1 (Green)	4"
70130G	Robertson Square #1 (Green)	3"
70120G	Robertson Square #1 (Green)	2"
70040Y	Square #0 (Yellow)	4"
70030Y	Robertson Square #0 (Yellow)	3"
70261BL	Phillips #2 (Blue)	6"
70241BL	Phillips #2 (Blue)	4"
70141LB	Phillips #1 (Light Blue)	4"
72126GR	Drive Bit, Double-Ended, Square #1 & #2 (Red/Green)	6"
72124GR	Drive Bit, Double-Ended, Square #1 & #2 (Red/Green)	4"
72204BY	Double-Ended, Phillips #2 & 1/4" Slot Bit (Blue/Yellow)	4"
72075	Strutter Socket	



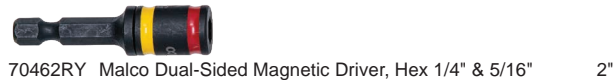
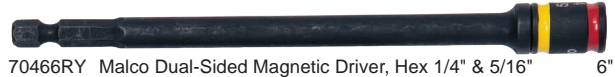
Racky Bits Counter Display

Contact us to get a counter display for your Racky Bits. These compact displays are available in two sizes to best suit your needs. Both displays include an anti-theft lid.

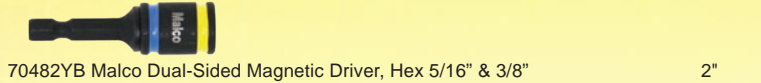
12 Slot: Part# 70SKE12
24 Slot: Part# 70SKE24



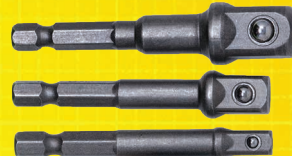
PART#	DESCRIPTION	LENGTH
-------	-------------	--------



PART#	DESCRIPTION	LENGTH
-------	-------------	--------



IMPACT DRIVER SOCKET ADAPTOR SET



PART#	DESCRIPTION	LEN.
70325	1/4", 3/8", 1/2"	2.5"

ALLEN HEAD DRIVER BIT KIT

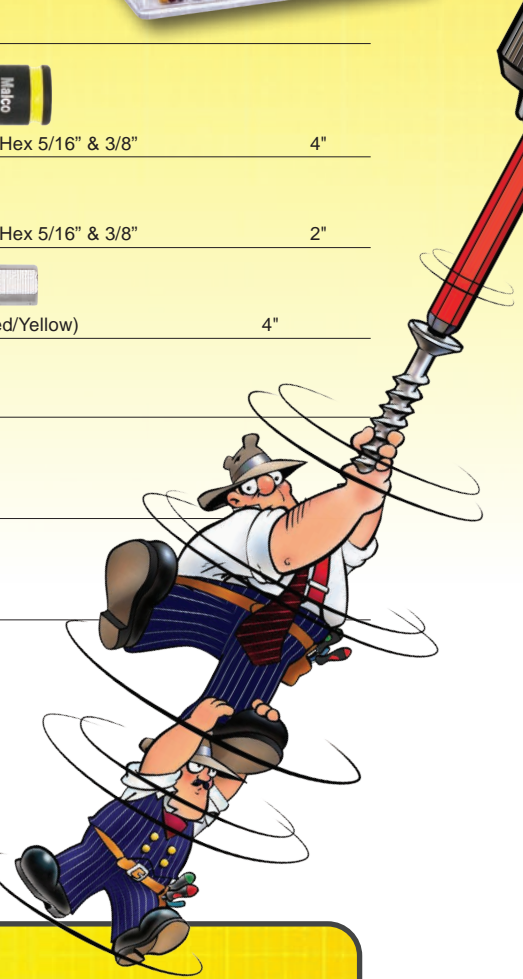
These high quality hex key allen bits are 6" long for increased versatility. Also included in the kit is a 3/8" socket adapter.

The 1/4" shank allows you to use any standard drill or quick change chuck.



PART#	DESCRIPTION
-------	-------------

72600	Allen Head Driver Bit Kit
-------	---------------------------



FOLLOW US



RACK-A-TIERS.COM

SALES@RACK-A-TIERS.COM

TOLL FREE: 1 (888) 939-9991

MALCO

DUAL-SIDED MAGNETIC HEX DRIVERS

Part#

70462RY - 2" Red/Yellow
70464RY - 4" Red/Yellow
70466RY - 6" Red/Yellow
70482YB - 2" Blue/Yellow
70484YB - 4" Blue/Yellow
70486YB - 6" Blue/Yellow

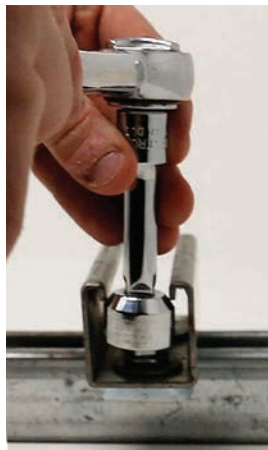


Quickly change between 1/4in. and 5/16in. hex sizes with Malco's unique, exclusive, dual-sided magnetic hex drivers. The reversible hex socket fits over a 1/4-inch magnet-tipped, ball locking hex shaft, and can be quickly reversed to change sizes. Eliminate troublesome buildup of metal shavings in the hex tip with the "Easy Clean Magnet". Just swipe with a glove or shop towel to clear any metal shavings. Tested torque of the reversible hex chuck driver design is equal to one-piece drivers.

THE STRUTTER

Installs 1/2" bolts into electrical strut channel for maximum strength. The Strutter Socket can be turned sideways, put into the strut, then slid over to the 1/2" bolt and tightened up. Before, you could only install the 3/8" bolt, but now, for heavy loads and maximum strength, use The Strutter Socket.

Part# 72075



NoDrop Tools *Be in Control*

Our Screw-Holding Screwdrivers were built to solve the everyday problem of removing/starting screws and not having confidence in our tools. They are made by Technicians for Technicians. These are great for mounting hardware and terminating leads. These are also a must for working with screws where gloves are required but dexterity is needed. When you use our products you will have confidence and "Be in Control".

- The unique design allows you to effortlessly attach to the screw without the worry of dropping it.
- The slim "pen" style fits easily into your pocket.
- The handle and release rod are both made with non-conductive materials.
- Mitigates risk while working in gloves and at heights.

Made In USA

For more information and product numbers visit our web site.



HOLDSABIT

Every moment during a project that you spend looking for the right tool is wasted time and results in frustration and bad decisions. The ingenious HOLDSaBIT slips on or off a drill in seconds. The HOLDSaBIT will hold any 1/4" hex shank item as well as pencils, nut drivers and hex shank drill bits. Tips and bits are easily inserted and removed.



- Sold in a kit with bits or sold separately.
- Hold any 1/4" hex shank items as well as pencils, drill bits, etc.
- 4 channels to fit a variety of length bits

Part# 70000 (Bits Not Included)

Part# 700.kit (includes 1-70140G, 1-70240R, 1-70241BL, 1-70531R, 1-70631Y & 1-70214RG)



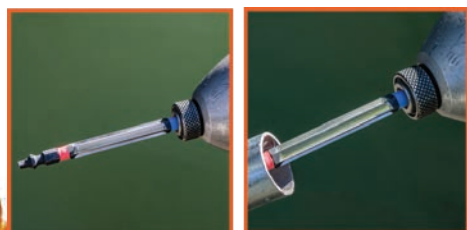
Reemer Bit

Double-Ended #2 Phillips & #2 Robertson Pipe Reaming Bit

- Reams all sizes of conduit
- Tighten your connectors and coupling
- Fits Power Drill chucks and quick release

Part# 72422RB

**SHARP ENOUGH EDGES TO
DO THE REAMING BUT WON'T
CUT UP YOUR FINGERS!**



Part# NT1050

EXTENDO NUT DRIVER



The Extendo Nut Driver kit is designed to adapt a standard 1/2" conduit into an extension nut driver for threaded rod. Utilizing the concept of a hollow shank nut driver, the Extendo Nut Driver gives you the flexibility to cut the conduit any length you need to drive the nut up the full length of threaded rod. With this tool on hand, you no longer need to buy multiple size hollow shank nut drivers! Save yourself time and money with this complete extension nut driver kit.

- Kit includes: 7/16", 9/16" sockets, and 1/4" adaptor
- No need to buy multiple hollow shank nut drivers
- Drill attachment designed for 3/8" chuck, will fit quick change drills
- Made from hardened steel
- Adaptable to any length nut driver needed
- Extends up to 10'

BIT KIT



**PART# 72710
FINISHING BIT KIT**
Includes: 4" - #2 Phillips/#2 Robertson Double-Ended Impact, 4" - #1 Robertson, 4" - #1 Phillips, 6" - Robertson Square, 6" - #2 Phillips, 6-32 and 8-32 Tapping Bits.

Part# 72711 ROUGH-IN BIT KIT

Includes: 4" - #1/#2 Robertson Double-Ended Impact, 6" - #1/#2 Robertson Double-Ended Impact, 4" - #2 Phillips/#2 Robertson Double-Ended Impact, 6" - #2 Phillips/#2 Robertson Double-Ended Impact, 6" - #1 Robertson, 6" - #2 Robertson, 4" - #3 Robertson



PICQUIE



SIXPAC *plus*
- 7 - 3" LENGTH, 1/4" HEX POWERBITS
- 11.5" TOTAL LENGTH
PART# P88001



Robertson



GREEN ROBBY
#5-6-7 SQUARE DRIVE
PART# SD110G



DASH 7
- 7 - 2" LENGTH, 1/4" HEX POWERBITS
- COMES IN 4 BRIGHT NEW COLORS
PART# P05001



RED ROBBY
#8-9-10 SQUARE DRIVE
PART# SD210R



STUBBY
- SOLID, COMFORTABLE, HIGH TORQUE HANDLE
- 6 HIGH QUALITY 1.3" LENGTH INSERT BITS
- IDEAL FOR WORK IN CLOSE QUARTERS
PART# P91000



BLACK ROBBY
#12-13-14 SQUARE DRIVE
PART# SD310BK



DEMAGNETIZER

MAGNETIZES OR DEMAGNETIZES DRIVER BITS,
TOOLS AND SMALL STEEL PARTS INSTANTLY!
Part# 70988

MAGNETIC BIT HOLDER



QUICK CHANGE MAGNETIC BIT HOLDER
PART# 72000



ROLGEAR

MULTIBIT RATCHET SCREWDRIVER / 15 TIPS (DOUBLE ENDED BITS)

- Smooth and silent ratcheting
- Single-handed ratchet adjustments from forward, locked, & backward
- Ergonomic, cushion comfort handle
- Magnetic components for drop-safe bit changing
- Stainless steel bit adapter
- Slotted: 3/16", 1/4"
- Square: 1, 2, 3, 4
- Phillips: 1, 2, 3, 4
- Torx: 10, 15, 20, 25

PART# SDR14



LADDER MATE

MULTI-USE LADDER ORGANIZER

TOOL HOLDER & PAINT TRAY WITH ADJUSTABLE DIVIDERS

- Easy to attach
- Adapter clips included
- Works with most fiberglass, Aluminum & wood step ladders



*Tools Sold Separately
Part# 65300

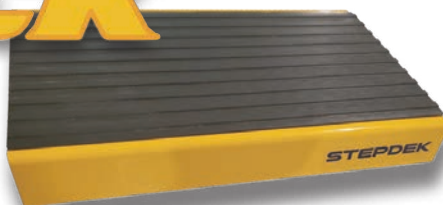


STEPDEK

The StepDek attaches to the ladder rung which provides a wider platform for users to stand on. Will work with most standard A-Frame aluminum ladders.

PRODUCT FEATURES:

- Easily attaches to most A-Frame ladders
- Rubberized non-slip comfort pad
- Durable aluminum design
- 11.5 x 7.3 x 2



Part #65250

Aerial Tool Bin

THE AERIAL TOOL BIN OFFERS A SAFE AND EFFICIENT WAY OF STORING YOUR TOOLS AT WAIST HEIGHT WHILE ON A VARIETY OF MAN-LIFTS. IT IS DESIGNED TO BE USED ON: AERIAL PLATFORMS, SCISSORS LIFTS, BOOM LIFTS, SCAFFOLDING, SWING STAGE RAILINGS, AND MAST CLIMBERS.



PRODUCT FEATURES:

- Made with reinforced, high density, non-conductive, UV protected, light-weight durable orange polypropylene plastic.
- Fits square or rounded 90 degree corners.
- 2 removable partition walls allow you to keep your tools separated and organized.
- Built in handle for easy transport.



*TOOLS SOLD SEPERATELY
Part# ATB1312



THE STAPLE SHARK IS A DUAL-ENDED TOOL! ONE END IS USED FOR PULLING OUT CABLE STAPLES IN ONE QUICK MOVEMENT. THE OTHER END IS A MULTI-PURPOSE PRY BAR FOR POPPING OUT BASEBOARDS OR PULLING OUT NAILS. THIS UNIQUE TOOL PROVIDES EASY STAPLE PULLING FOR ANY SIZE OF CABLE STAPLE. IT HAS MULTIPLE USES FOR JUST A SIMPLE TOOL: PULL STAPLES, HOLD STAPLES IN TIGHT AREAS, SPEED SQUARE, PRY BAR, NAIL PULLER AND EVEN A BOTTLE OPENER.



STAPLE PULLER!



HOLDS STAPLES!



PRY BAR!



RULER!



BEER OPENER!

- Made of hardened steel.
- Includes a handy nail puller and pry bar for multi-purpose use.
- Ruler for quick on the job measurements.
- Use as a quick carpenter's square.
- Hammer staples into tight spots with the built in slots.
- Acts as a beer bottle opener at the end of the day.



Part #52455



NEEDLE NOSE WIRE STRIPPERS

Sometimes referred to as the best wire strippers on the market, the Croc's Needle Nose Wire Strippers will impress even the toughest critics. These strippers have countless features, each designed to make your job easier and more productive.

FEATURES:

- Glow in the dark handles
- Ergonomic handle design for maximum comfort
- Needle nose tips
- Strip from 22-10 AWG
- Barrel Sleeve Crimper
- NMSC cutter near the "nose" of the stripper
- 8-32 and 6-32 bolt cutters

Part# 47000

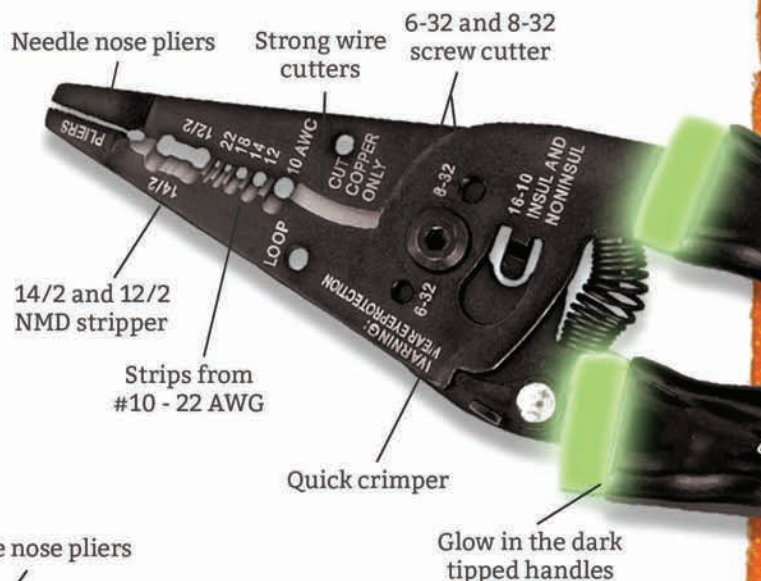


Introducing the Croc's Jr., A compact and lightweight version of the original. This model serves as an affordable predecessor to the original without skimping on its numerous applications.

FEATURES:

- Glow in the dark handles
- Ergonomic handle design for maximum comfort
- Compact design
- Strip from 22-8 AWG
- 8-32 and 6-32 bolt cutters

Part# 47002



V-CUTTER

ELECTRICIAN'S ADD-ON CABLE STRIPPER

STRIPS CABLE IN OR OUT OF ELECTRICAL BOXES WITH EASY TO PUSH ACTION

One of the smartest inventions to come to market this decade is the V-Cutter. This simple little blade attaches to most wire strippers and allows you to strip cable with a single swipe.

FEATURES:

- A new way to strip NMSC cable
- Easily attaches to most wire strippers
- Strips cable in or out of electrical boxes with action
- Virtually eliminates nicking or cutting the wire insulator



Part# 47010

JAVELIN

ALL IN ONE DRILLING EXTENSION

The Javelin is here to change the way we drill holes. Never get caught in a drilling extension jam again! This all-in-one extension drill can reach up to 10 feet. It comes with a fully adjustable hole cutter and auger bit extension kit. Just cut a 3/8" - 16 threaded rod to any length you need.

FEATURES:

- Holds drivers bits
- Holds nut drivers
- Holds drill bits
- Reaches up to 10 feet long

Part# 95000

New
Reduced
Price!



QUATTRO FLEX AUGER BITS

Fast and aggressive self feed auger bits, welded to a flexible shaft. Cuts clean holes. Crossbored at both ends for easy wire pulling. Use for wood only.

Part# QTT3824	3/8"x24"	Part# QTT1224	1/2"x24"	Part# QTT91624	9/16"x24"	Part# QTT3424	3/4"x24"
Part# QTT3836	3/8"x36"	Part# QTT1236	1/2"x36"	Part# QTT91636	9/16"x36"	Part# QTT3436	3/4"x36"
Part# QTT3848	3/8"x48"	Part# QTT1248	1/2"x48"	Part# QTT91648	9/16"x48"	Part# QTT3448	3/4"x48"
Part# QTT3854	3/8"x54"	Part# QTT1254	1/2"x54"	Part# QTT91654	9/16"x54"	Part# QTT3454	3/4"x54"
Part# QTT3872	3/8"x72"	Part# QTT1272	1/2"x72"	Part# QTT91672	9/16"x72"	Part# QTT3472	3/4"x72"

More sizes available

HIGH SPEED STEEL

Superior quality M-2 High Speed Steel drill bit welded to a flexible shaft. Cuts both metal and wood. No need to worry about hidden nails or metal studs when drilling.

Part# FLX1424	1/4"x24"	Part# FLX3824	3/8"x24"	Part# FLX1224	1/2"x24"
Part# FLX1436	1/4"x36"	Part# FLX3836	3/8"x36"	Part# FLX1236	1/2"x36"
Part# FLX1448	1/4"x48"	Part# FLX3848	3/8"x48"	Part# FLX1248	1/2"x48"
Part# FLX1454	1/4"x54"	Part# FLX3854	3/8"x54"	Part# FLX1254	1/2"x54"
Part# FLX1472	1/4"x72"	Part# FLX3872	3/8"x72"	Part# FLX1272	1/2"x72"

GUIDE TOOL

Allows the Piranhabits to bend for drilling from outside the wall cavity.



Part# FIB-GUD

SWITCH BITS

INTERCHANGEABLE FLEX BITS

Rack-A-Tiers is proud to announce the Switch Bit line, our newest line of flexible installer bits. Quickly and easily customize your own set with these flexible bits featuring interchangeable heads and different shank lengths to fit any job.

ETS31621	SINGLE SHANK	3/16"	21"
ETS31633	SINGLE SHANK	3/16"	33"
ETS31654	SINGLE SHANK	3/16"	51"
ETS31669	SINGLE SHANK	3/16"	69"
ETS1421	SINGLE SHANK	1/4"	21"
ETS1433	SINGLE SHANK	1/4"	33"
ETS1454	SINGLE SHANK	1/4"	51"

ETB38316	INTERCHANGEABLE HEAD	3/8"
ETB916316	INTERCHANGEABLE HEAD	9/16"
ETB3414	INTERCHANGEABLE HEAD	3/4"

ETC38S316	SWITCHBIT COMBO HEAD (3/8") & SHANK (3/16" x 33")
ETC916S316	SWITCHBIT COMBO HEAD (9/16") & SHANK (3/16" x 33")
ETC34S14	SWITCHBIT COMBO HEAD (3/4") & SHANK (1/4" x 33")

SOFFIT BIT FOR OVERHEAD SERVICE MASTS

The Soffit Bit is specifically designed to drill through a soffit in a single pass for an overhead mast. The Soffit Bit will drill through multiple materials including wood, nails, aluminum and more.

The Soffit Bit includes a built in arbor, wood or masonry bit.

Part#
Wood Holesaw - 95224W
Metal Holesaw - 95124M



COMING SOON! →



OverDRIVE™

FAST BORING AUGER BITS

The Over-Drive boring auger bits are specifically designed to not bog down your battery drill. Designed with a 1/4" chuck and available in 3/4" and 7/8".

Features:

- Available in 7" lengths
- 1/4" drill chuck
- Designed to put less strain on your battery drill

Part# AW340D-3/4" x 7"
AW780D-7/8" x 7"

AUGER FILE

DON'T THROW AWAY
EXPENSIVE AUGER BITS!

Save those precious auger bits from being another dull tool lying around your shop or work truck. Save time and money by sharpening your bits from the comfort of your own home.

FEATURES:

- Top teeth for auger's main cutters
- Side teeth for sharpening tip



Part# AUFIL

Carbide Tipped HoleSaw Kit

The carbide tipped holesaw kit is perfect for cutting through wood or drywall.

Included in the kit:

- 2 1/2", 2", 1 3/4", 1 3/8", 1 1/8", 7/8" holesaws.
- Large and small arbor



Part# 96250



18" AUGER BITS

Part# AW3818 3/8"
Part# AW1218 1/2"
Part# AW11618 11/16"
Part# AW3418 3/4"
Part# AW7818 7/8"
Part# AW118 1"
Part# AW11407 7 1/2" x 1 1/4"

7 1/2" AUGER BITS

Part# AW3807 3/8"
Part# AW1207 1/2"
Part# AW11607 11/16"
Part# AW3407 3/4"
Part# AW7807 7/8"
Part# AW107 1"

NAIL CHIPPER & STANDARD CHIP AUGER

STANDARD SHIP AUGER



Precision ground cutting edge for fast cutting of clean holes in wood.

Burr-free lead screw for easy starts and pull-through without material build-up.

NAIL CHIPPER SHIP AUGER

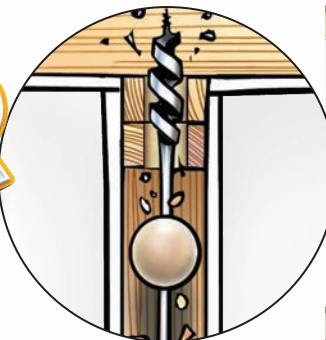


TRI-CUT design with 3 precision ground edges for fast, smooth cutting without resistance.

REDUCES NAILS TO CHIPS without grabbing and leaves a clean hole with minimal "blowout."

To order Tri-Cut Bits add a 'T' to the part #'s

BUMPER BALLS



AUGER SHAFT CENTERING TOOL

- No more bit walking, nail hitting, wall patching or carpet replacing
- Fits all 3/16" shaft auger bits
- Every kit includes two Bumper Balls: 1-1/2" and 2"
- New & Improved plastic model



BEFORE AFTER

Part# BB1520 - Bumper Balls 1 1/2 & 2"

Part# BB1520-916 - Bumper Balls + 9/16"x54" Flex Auger Bit

Part# BB1520-38 - Bumper Balls + 3/8"x54" Flex Auger Bit

CO-PILOT[®]

FEATURES:

- Enlarge any hole while keeping it centered
- Hole enlargement made fast and easy in under 2 min
- Versatile fit works with all arbours
- Can be used for wood, plastic, drywall (limitations set by hole saw)
- Small enough to fit in most hole saw kits
- Accompany with the Dust Bowl for mess free result



MULTI BIT: STEP DRILLS

Hardened stepped bits for clean cuts in sheet metal, electrical boxes, arborite, etc. Handy for creating knockouts. Made from high grade cobalt.

PART#

- MLT1 - Size: 1/8" - 1/2" 13 Step
 MLT3 - Size: 1/4" - 3/4" 9 Step
 MLT4 - Size: 3/16" - 7/8" 12 Step
 MLT5 - Size: 7/16" - 1 1/8" 12 Step
 MLT7 - Size: 1/4" - 1 1/2" 11 Step



THE GUIDE-O



The Guide-O allows you to enlarge holes utilizing a pilot bit the same size as the existing hole. By using a pilot bit that matches up to the existing hole, the hole cutter will stay centered while drilling the new, larger hole.

FEATURES:

- Fits most standard carbide and bi-metal hole cutters
- Kit includes 1/2", 3/4" and 1" pilot bits
- Made from carbon steel
- *Hole Cutter not included

See website for part numbers

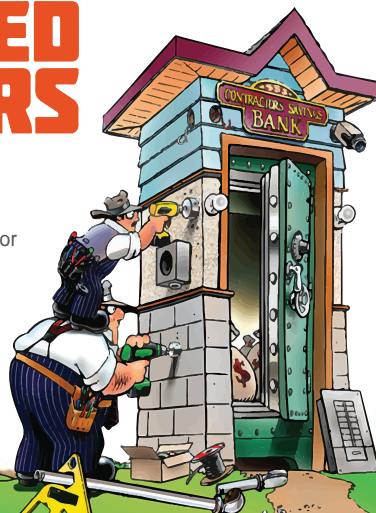
High Performance CARBIDE TIPPED STEEL CUTTERS

PART#'S

- 92HC4 - Steel Cutters 7/8"
 92HC8 - Steel Cutters 1 1/8"
 92HC14 - Steel Cutters 1 3/8"
 92HC20 - Steel Cutters 1 3/4"
 92HC22 - Steel Cutters 2"
 92HC24 - Steel Cutters 2 1/2"
 92KIT4 - 4-Pc Set: 7/8", 1-1/8", 1-3/8",
 extra pilot bit
 92KIT8 - 8-Pc Set: 7/8", 1-1/8", 1-3/8",
 1-3/4", 2", 2-1/2", 2 extra pilot bits

FEATURES:

- Ejector spring
- Tapered center drill
- Carbide tipping allows for repeated regrinding



SHUGI'S SLIP DISCS

SMALL SOLUTION FOR BIG PROBLEMS

In a bind with your hole saw? Get freed up with the Copper Washer. The Copper Washer goes in between your hole saw and the arbor to help reduce binding and make it easy to take them apart once you are done drilling.



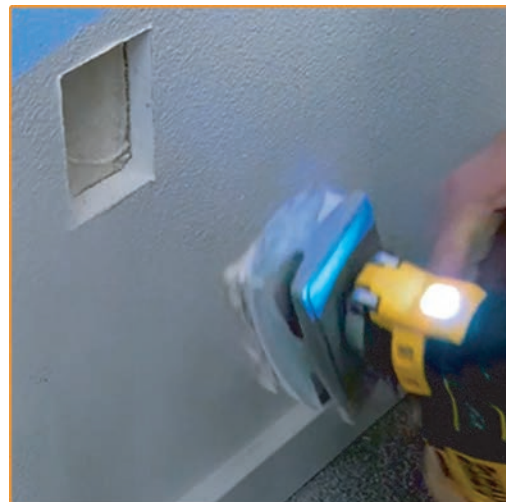
Part#
90512 - 1/2"
90558 - 5/8"
(Packs of Five)

Q-BIT: DRYWALL HOLE CUTTER



Q-BIT SAW SIZE CHART

PART #	BLADE SIZE						
42710	2 1/8" X 3 5/16"	X	X				
42740	2 1/4" X 3 5/8"			X			
42700	2 3/8" X 3 3/4"				X		
42720	3 3/4" X 4"					X	X



The Q-Bit is a revolutionary hole cutter that allows you to quickly cut out device holes. The Q-Bit is built to work with any standard oscillating tool.

ROUND MULTI-TOOL HOLE CUTTER

CUT HOLES WITH PERFECT PRECISION

THE ONLY ROUND MULTI-TOOL HOLE CUTTER ON THE MARKET



The new Multi-Tool Hole Saw Cutters from Rack-A-Tiers are available in the 2 most common recessed lighting sizes 3 3/8" and 4 1/4". Simply clip them on your oscillating multi-tool and you're ready to go. Make quick work of your hole cutting without the risk of damaging your wire that comes with using a standard hole saw.

FEATURES:

- Available in 3 3/8" and 4 1/4" to cover the most common recessed lights
- Pull your wire stub through the holes in the saw during cutting without causing any damage
- Reduce the strain on your wrists caused by standard battery drills
- Less dust, less mess
- Cuts cleaner holes than a standard hole saw

Part# 42675 - 3 3/8"
Part# 42680 - 4 1/4"



Part# 42690 - 6 3/8"

DRILL OPERATED ROUND HOLE CUTTER

The 6 3/8" Drill Operated Hole Saw will cut cleaner, faster holes for your recessed lights. Put less stress on your wrists with this easy to use hole saw.



FEATURES:

- Bimetal
- Holes on side to easily pop out cut drywall
- Arbor bit included
- Can be paired with our Driller's Dust Bowl to capture all the drywall dust



SHARP POG

OSCILLATING BLADE SHARPENER

FEATURES:

- Made up of 15 - 3" diameter metal cutting disks
- Overall width: 1 1/2"
- Will NOT sharpen carbide tipped blades
- To be used with hand drill only
- Always wear safety glasses

Part# H91538

**QUICKLY & EFFECTIVELY SHARPENS OSCILLATING
SAW BLADES WITH THE USE OF A HAND DRILL.**



ELECTRICIAN'S KIT

4 OF THE MOST POPULAR STYLE MULTI-TOOL CUTTING BLADES



- Includes 2x Bi-Metal Blades and 2x Wood/Plastic Blades
- Cuts very quickly and neatly through wood & drywall
- Notch out joists and studs for cables & pipes
- Cuts out cabinetry for device boxes
- Remove baseboards for heaters and devices
- Creates minimal dust and disturbance
- Cuts easily in awkward access situations



Blade 1: 32mm Bi-Metal Wood and Nails
Blade 2: 32mm Coarse Tooth Wood
Blade 3: 44mm Bi-Metal Wood and Nails
Blade 4: 64mm Coarse Tooth Wood



Part# H4EMK
Electrician's Kit (Four Blades)
Part# H5EMK
Electrician's Kit (Five Blades)
Part# H32CJ1
Japanese Tooth Blade 32mm
Part# H44BM1
Bi-Metal Blade - 44mm
Part# H63CJ1
Japanese Tooth Blade - 63mm
Part# H44TN1
Titanium Alloy Bi-Metal Blade - 44mm



Multi-Tool 4 Piece Blade Kit Part# H8475

Contains:

- 2 x 1-3/4" Bi-Metal blades 45mm (1 x Titanium Plated, Wood/Plastic/Metal)
- 1 x 1-1/4" Bi-Metal blade 32.5mm (Wood)
- 1 x 2-5/8" Bi-Metal blade 68mm (Wood/Plastic/Metal)

4 Piece Multi-Tool Blade Set

Bi-metal oscillating Multi-Tool Blade Set for a wide variety of cutting applications. Cut quickly and neatly through wood, drywall, plastic, nails and other similar materials. The 4 Piece Blade Set can be used with most standard oscillating multi-tools. Great for multiple applications including: cutting out baseboards, drywall device holes, cabinetry, etc.



Part# H44TN1

44MM ULTIMATE TITANIUM ALLOY BI-METAL SMART BLADE

The Titanium coated bi-metal blades are a great long-life blade solution. Made for cutting through wood AND nails and screws! The titanium coating helps reduce the heat build up on the blade, preserving the tooth design and maintaining a sharper blade for longer lasting cuts in wood!



NO MORE MESS EASY DISPOSAL OF DEBRIS WORKS WITH HOLE SAW UP TO 8" AND DRILL BITS TOO!

Driller's Dustbowl



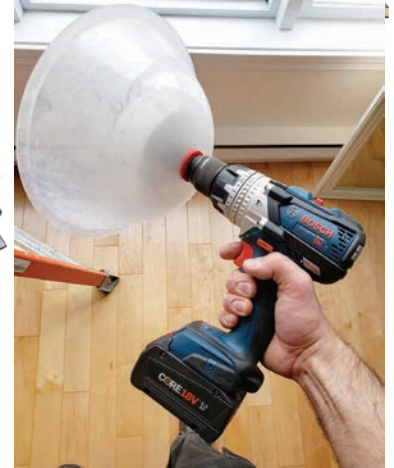
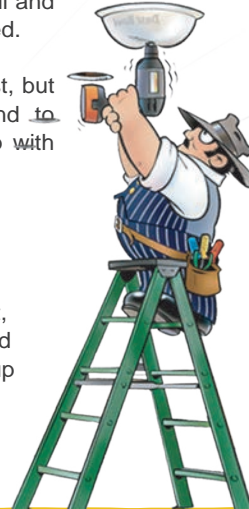
The flexible Driller's Dust Bowl compresses against the work surface and traps all dust and debris as you drill. The bowl fits your drill and hole saw without any adjustments needed.

You may enjoy a face full of drywall dust, but your customers might not. Put an end to "unprotected hole sawing" and wrap up with the Driller's Dust Bowl.

Please note hole saw is not included.

Mfg Note:

You may enjoy a face full of drywall dust, but your customers might not. Put an end to "unprotected hole sawing" and wrap up with the Driller's Dust Bowl.



Part# 48000

DRILLER'S DUST BOWL PRO

The Driller's Dust Bowl got upgraded! Now available the Driller's Dust Bowl Pro equipped with a vacuum adapter.

- Easy disposal of debris.
- Works with hole saws up to 8".

WITH VACUUM ADAPTER



Part# 48020



HOLE-IN-ONE MULTI-FUNCTION HOLE CUTTER

SAVE YOUR LUNGS! CUTTING HOLES WITHOUT PROTECTION CAN BE HAZARDOUS TO YOUR HEALTH. PROTECT YOU AND YOUR CREW WITH THE HOLE-IN-ONE.

Stay clean and safe with this multi-functional, fully adjustable hole saw equipped with a transparent cover that collects dust.

- Includes Carbide Tipped and High Speed Steel blades.
- Cuts through: plywood, MDF, sheetrock, light sheet metal, ceiling tiles, plaster and fiberglass.
- Adjusts to exact hole size needed.
- Dust collector shield.
- Designed to reduce kickback.
- Economical replaceable blades.



90300 - 1 7/8" - 12"
90400 - 1 7/8" - 17"
90200 - 1 7/8" - 9"
90199 - Replacement Pilot Bit
90VT / 90VH - Replacement Blade

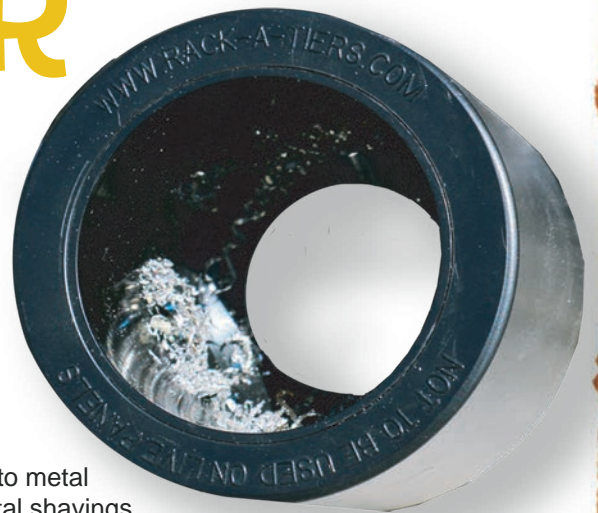
Part #84100

CHIP CATCHER

THE CHIP CATCHER ADHERES TO METAL SURFACES USING RARE EARTH MAGNETS. METAL SHAVINGS ARE ATTRACTED TO THE MAGNETS EMBEDDED IN THE CYLINDER WALLS. MAKES FOR EASY CLEAN UP!



- Increases safety
- Magnet base attaches to metal surfaces & catches metal shavings
- Quick & convenient clean-up



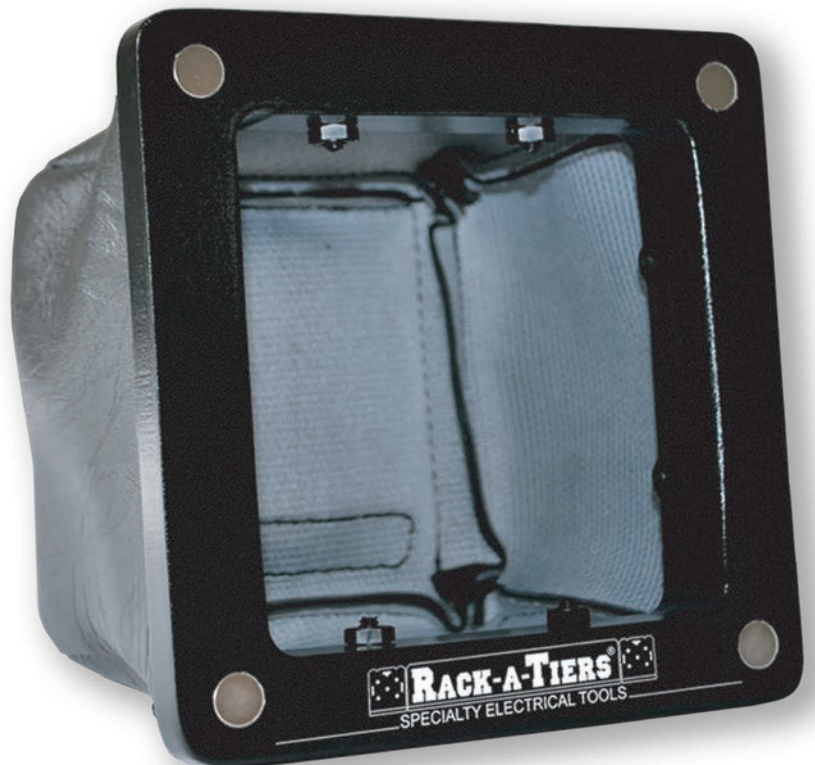
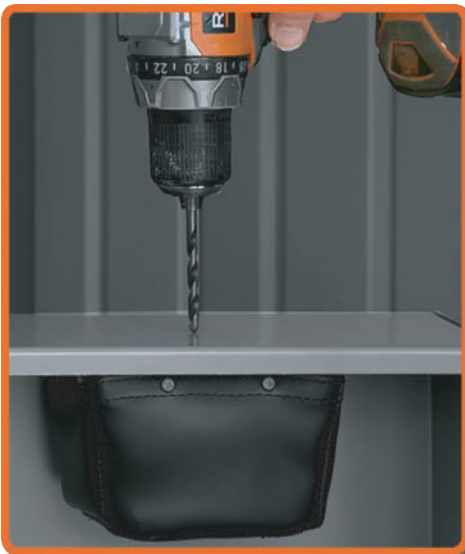
NOT TO BE USED ON LIVE PANELS

Part #84000

DIRT BAG

- Magnet in base of bag attracts filings
- Increases safety
- Easily attaches to metal surfaces
- Made from non-conductive material
- Removable magnet included in bag pocket
- Fits most panels

THE DIRT BAG IS SPECIFICALLY DESIGNED TO ELIMINATE METAL SHAVINGS FROM SPREADING THROUGHOUT A PANEL WHILE DRILLING. UTILIZING EXTRA STRONG RARE EARTH MAGNETS IN THE FRAME, THE DIRT BAG CLINGS TO THE METAL SURFACE TO CATCH ALL DEBRIS CAUSED BY DRILLING.



NOT TO BE USED ON LIVE PANELS

TREE HUGGER

TREE MOUNTED LIGHT/BOX BRACKET

YOUR LIGHTS WILL GROW UP WITH YOUR TREES!

The Tree Hugger bracket shifts with your tree as it goes wider and taller saving it from cracking or breaking. It will also save you time and money by cutting out the need to adjust the light focus points as the tree grows.



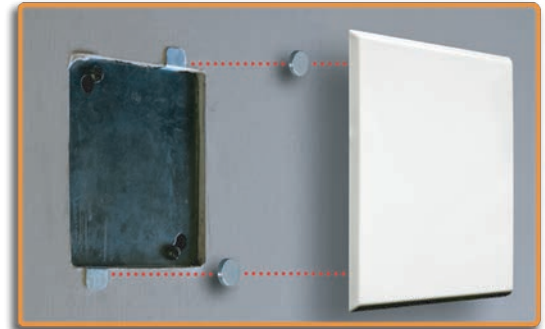
Part #85200



6.5 INCH PLATE

Features:

- Installs in seconds with rare earth magnets - snaps in place to metal clips (included)
- White decorative plate covers 5-1/2" square hole or electrical box
- Can also be used to cover a round hole with up to a 5-1/2" diameter
- Visually appealing white decorative plate - no need to paint metal covers



Part# D612

FOLDING UTILITY KNIFE

STRIP NM WIRE WITH EASE

This compact utility knife will allow you to cut through NM wire, drywall, cardboard, light plastic, carpet and more! Easily folds up to be stored in your pocket or tool belt.



FEATURES:

- Piercing sharp SK5 blade
- Durable aluminum handle with belt clip
- Quick change blade mechanism
- Comfortable oversized thumb pad

DON'T FORGET SAFETY GLOVES!



Part# 47015

COPPER WIRE STRIPPERS

RECOVER COPPER & ALUMINUM WIRE QUICKLY AND EASILY WITH THESE MONEY MAKING MACHINES!



Part# 47200

COPPER WIRE STRIPPER 2

The top selling CWS-2 model weighs in at only 45lbs. This wire stripper is compact enough to easily move around, but still has the ability to strip a wide range of wire.

FEATURES:

- Strips from 14 AWG to 750 MCM (1.45" diameter)
- Strips NMSC cable 10-14 AWG
- 1/2 HP Motor
- All aluminum frame
- Hardened one piece blade
- Strips solid core or braided wire
- Blade made from tool steel
- Blade easily re-sharpened
- Fully adjustable wire guide



Part# 47100

COPPER WIRE STRIPPER 1

The CWS-1 is the largest wire stripper available from Rack-A-Tiers. Powered by a 1 HP motor and with the ability to strip up to 3" in diameter, there isn't much this wire stripper can't handle.

FEATURES:

- Strips 14 AWG to up to 3" in diameter
- Strips NMSC cable 10-14 AWG
- 1 HP motor
- All aluminum frame
- Hardened one piece blade
- Strips solid core or braided wire
- Blade made from tool steel
- Blade easily re-sharpened
- Fully adjustable wire guide
- Bench model - anti-slip base
- Made in Canada

THE WIRE PEELER

The Wire Peeler is a portable, drill operated wire stripper for recycling your scrap wire. Stop missing out on extra cash, strip it down and get top dollar. An upgraded version of our Easy Stripper, the Wire Peeler is a well built machine for a great price.

Features:

- Drill operated portable wire stripper
- Strip from 14 AWG - 4/0
- Strip 10 - 14 AWG NM Cable
- Hardened one piece blade
- Fully adjustable 3-hole wire guide



Part# 47025

COPPER WIRE STRIPPER JR.

A low cost alternative to the CWS-2, the Copper Wire Stripper Jr. is the money making tool that you need in your warehouse. Driven by a standard power drill, you'll get more than double the money from your scrap wire. It's that simple!

Features:

- Wire Range: 14 AWG - 4/0
- Strips NMSC cable 10-14 AWG
- All aluminum frame
- Single pass cuts outer jacket & one inner wire
- Hardened one piece blade
- Strips solid core or braided wire
- Blade made from tool steel
- Blade easily re-sharpened
- Fully adjustable wire guide



Part# 47030

EASY STRIPPER

Strip the cover off your scrap wire in minutes with the Easy Stripper! Increase your earnings on every single job you complete.

Features:

- Less than 10% the price of a standard motorized wire stripper
- Strips 12 to 4/0 wire
- Powered by any normal power drill
- Way easier and faster than using your knife!
- Environmentally friendly - no burning required
- For Light Use Only



Part# 47020

FOR REPLACEMENT PARTS VISIT RACK-A-TIERS.COM

WIRE BENDING MADE EASY

THE Bulldog Bender



The Bulldog Bender is designed and manufactured by an electrician for electricians. Used for bending wire in panels, disconnects, LBs & wireways. The Bulldog Bender will prove to be a valuable tool to add to your arsenal. As with any specialty tool, with practice you will learn how to use the Bender to its full bending potential.



Part# 78400



Part# 78600



Part# 78501



Part# 78502 (set)

Part# 78501

Part# 78500



Larger model available for up to 1000 MCM.
Contact us for more details.

BENDS UP TO 500 MCM

78500 - Bulldog Original
78501 - Bulldog Pro with Adaptor
78502 - Bulldog 3 Piece Set (original & Pro)

BENDS UP TO 750 MCM

78600 - Bulldog Big Daddy 3 Piece Set

BENDS UP TO 4/0

78400 - Bulldog Pup
78402 - Bulldog 'Pup Pro' 2 piece set
78403 - Bulldog Pup 3 piece set



All Bulldogs shipped with knurled dowels except the "Pup" series. Smooth dowels available. Please see website for all configurations.

Bend-All

BENDS UP TO 500 MCM



- Bend up to 500 MCM.
- Connects to your standard 1/2" ratchet
- Bend inside enclosures to the right, left, front or back
- Bend in tight spaces where your hands wouldn't fit
- Made with machined aircraft aluminum
- Made in Canada

Part #77455

TOP SELLING
PRODUCT



Save your knuckles by using our Bend-All cable bender! Made with machined aircraft aluminum, this cable bender is extremely strong and durable. It connects to your standard 1/2" ratchet, making cable bending a breeze for you.



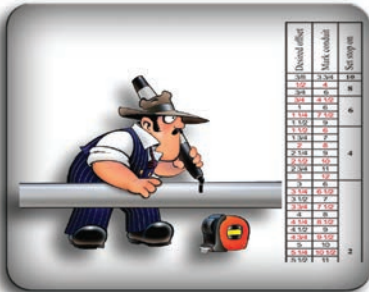
HOPPY BENDER

EASY AS 1,2,3!

The Hoppy Bender is hands down the smartest & most innovative bender on the market. We have revolutionized the way electricians bend pipe - it has never been easier or faster than it is now with the Hoppy Bender.

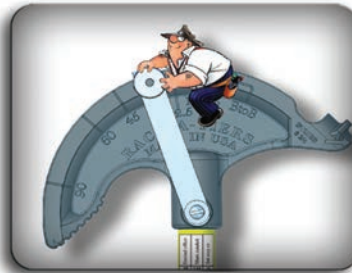
STEP ONE

Read table and mark pipe



STEP TWO

Set Stop



STEP THREE



Features:

- A "Stop" attached to the Bender head used to create exact & repeatable bends every time.
- Simplified "Multipliers" engraved into the bender for placing the "Stop" prior to making off sets & four-point saddles.
- Special 22.5 and 45 degree marks engraved into the bender for placement of conduit bend marks as well as standard degree marks for stop placement.
- Used together for bending three-point saddles without reversing the conduit in the shoe.
- Handy reference charts attached to the handle for locating bend marks.

PART#

57050 - 1/2" Hoppy Bender
57075 - 3/4" Hoppy Bender
57002 - Replacement Handle
57005 - Replacement Thumb Screw

57050LAB - 1/2" Replacement Label
57057 - 1/2" Replacement Swing-Stop
57075LAB - 3/4" Replacement Label
57077 - 3/4" Replacement Swing-Stop

Part# #57090



KICK WEDGE

The Kick Wedge is a tool designed to help level out your 90 degree bend before adding your kick or second 90 to your conduit. Uneven bending surfaces or where you grab your conduit with the bender shoe will raise your 90 off the ground differently every time, so having a tiered platform to cycle through will help you level your 90 no matter the circumstance. The kick wedge tiers will accept 1/2", 3/4", 1", and even 1 1/4" conduit sizes.

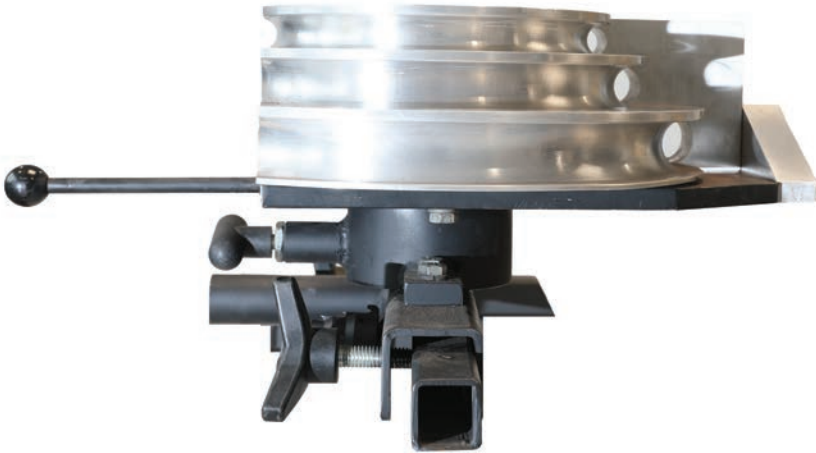


SKYBENDER

LIFT MOUNTED CONDUIT BENDER

Part# 57123

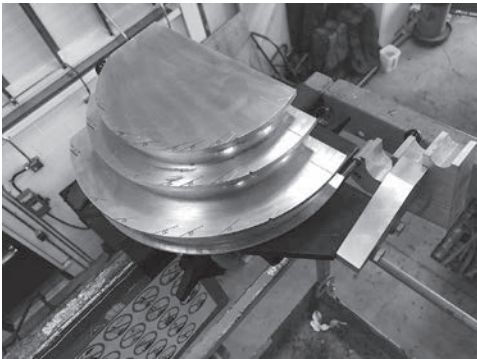
COMING SOON!



The first of its kind Skybender bends 1/2", 3/4" and 1" conduit while mounted to your lift. Save time and energy without having to go up and down to complete your bends. It will work even on the ceiling between the beams, with a single worker.

Conduit systems can be completed up to 2x faster while at the same time eliminating various safety concerns.

The Skybender also includes a three-dimensional reamer and an integrated pipe straightener to optimize your bending job.



The angles are more accurate, with a direct view of the marks and ninety degree bends are easy to validate with the guards. Identical easy-to-use markings of a traditional bender, meaning no learning curve necessary. Once you bend in the sky, you'll never want to be grounded again!

Features:

- Patent Pending
- Mounts to most lifting platforms
- Bends 1/2", 3/4" and 1"

BENDER'S FRIEND

COMING SOON!

THE BENDER'S FRIEND IS A LIGHTWEIGHT, PORTABLE 90 DEGREE PVC BENDING TEMPLATE.

Part# 59130



Features:

- Handles 3 sizes: 1/2", 3/4" and 1".
- No more kinks
- Reduce your PVC inventory
- Does compound bends
- Perfect match for any PVC heater

PIPE VIPER

**COLD BEND RIGID PVC
PIPE WITHOUT PIPE
COLLAPSE OR FRACTURE!**



HOW?

Simply insert the spring into the pipe & bend across your knee!

- **No Heat Guns**
- **No Heat Blankets**
- **Fewer PVC Fittings**

MFG Note:

Needs to be at least 50 degrees Fahrenheit to work effectively

PART#

58050 - 1/2" PVC Spring Bender
58075 - 3/4" PVC Spring Bender
58100 - 1" PVC Spring Bender
58125 - 1 1/4" PVC Spring Bender
58150 - 1 1/2" PVC Spring Bender
58200 - 2" PVC Spring Bender
58250 - 2 1/2" PVC Spring Bender
58300 - 3" PVC Spring Bender
58350 - 3 1/2" PVC Spring Bender
58400 - 4" PVC Spring Bender



The HEAT TANK

**WILL HOLD UP TO
1 1/2" PVC CONDUIT.**



The Heat Tank is a simple and effective way to bend your PVC pipe. Using a standard forced air heat gun, means no expensive blanket or heat boxes are required. Simply connect your heat gun to the designated slot, insert the portion of the pipe you wish to bend and you're set.

FEATURES:

- Prevent overheating and burning with the temperature gauge
- Saves time with hands free heating
- Eliminates the need to buy prefab 90's and couplings

Part# 59500



IT'S SIMPLE... FOAM LINE CARRIERS ARE EXPENSIVE

BAG PIPERS

ARE CHEAPER AND WORK MUCH BETTER

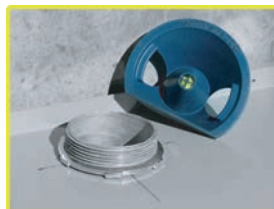


Part#
BP05.125 (sm) 1/2" x 1 1/4" - 10 pack
BP150.40 (med) 1 1/2" x 4" - 5 pack
BP20.60 (lg) 2" x 6" - 3 pack
BP05.600 (multi-pack) 1/2" x 6" - 6 pack

Bag Pipers are a cheaper solution than the alternative foam line carriers. They are available in a variety of sizes that best suit your needs.



GDCENTER FINDER



Part #67500

Discontinued - While Supplies Last

The GDCenter Finder revolutionizes the installation of electrical panels and junction boxes. No need to learn a new installation process. Pull your layout just as you always have, but this time aided with the GDCenter Finder. Your center point will always be level and clearly identified. The days of "close enough" are over. Finally a center tool that works!



PENGUIN PULLER

BULLET-HEAD WIRE ATTACHMENT PULLING TOOL

Part# 69705 - Penguin Puller Junior
Part# 69700 - Penguin Puller Senior

The Penguin Puller Sr. and Penguin Puller Jr. are revolutionary new tools designed to aid in easily pulling large cables. The sleek, bullet shape allows for seamless pulling, no tape or crimps required. Utilizing four slots and allen-key set screws, the Penguin Puller Sr. and Penguin Puller Jr. are rated for 4000 lbs. of pull strength. These tools are the cool new kids on the block and here to stay when it comes to pulling wire!

FEATURES:

- 4,000 lbs. MAX PULL STRENGTH.
- 4 Wire Slots.
- Attachment hole for Sr. & Jr. is .63 of an inch in diameter.
- Penguin Puller Sr. - 3/0 to 350 MCM Copper or Aluminum (2-1/2" Pipe or Larger).
- Penguin Puller Jr. - 2/0 to 4/0 Copper or Aluminum (2" Pipe or Larger).
- No tape, no crimps, no mess.
- Reusable.

FLUSH PIN SHACKLE

- Stainless Steel
- Four Ton g- Break Load
- 0.5in. Pin Size

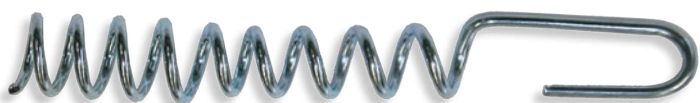
Part #69710



FLEX PULLER

Flexible metal conduit pulling tool easily screws onto exterior of MC cable and provides a hook to pull cable. No more getting caught up in insulation or other obstacles! Provides a hook to pull cable through hollow & insulated walls and ceilings. Can be used on #14, #12, & #10 MC Cable!

2 Pack
Part# 42620



THE ALL AMERICAN PULL BUDDY

SHOEHORNS FOR YOUR WIRE

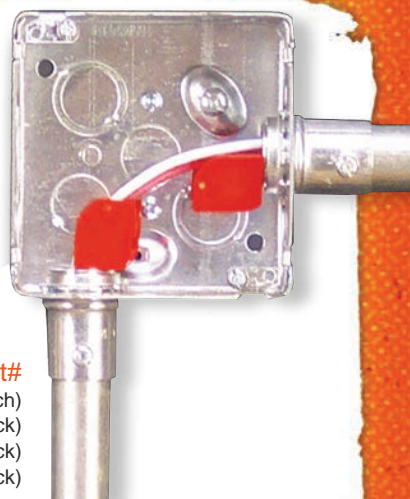


Features:

- Reduces Time and Labor
- Reduces the chance of damaging wires
- Turns wire pulling into a one person job

Part#

- 42000 - Multi-Pack (6 pack / 2 of each)
- 42050 - 1/2" Blue (10 Pack)
- 42075 - 3/4" Red (10 Pack)
- 42100 - 1" White (10 Pack)



LB WIRE GUIDE

Part# 42200

FEATURES:

- Assists while working on your own
- For PVC LB fittings and is adaptable to most metal LB's
- Fast for one person conductor installations
- Installs in two positions to fit both "Ends" of the LB

MFG NOTE

Two hundred amp services (3/0 wire) can be hard on your knuckles. The LB Wire Guide puts the wire in the pipe and leaves the skin on your fingers.



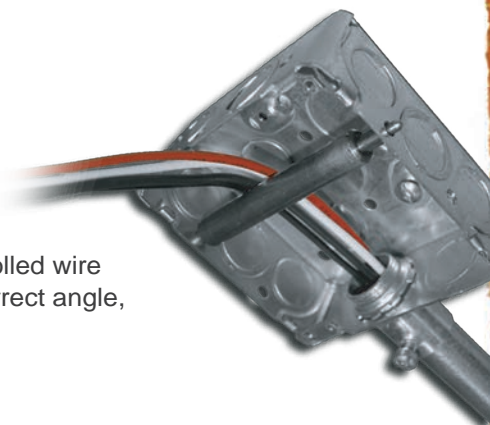
Part# 41100

PulLee

This slim, but strong, steel roller fits in all standard 4x4 boxes for smooth and controlled wire pulling. It effortlessly guides wire and cable into the feeding end of the job at the correct angle, eliminating the need for a second person to manually guide the feeding end.

FEATURES

- Spring loaded tips keep it locked in place
- Stainless steel design for maximum strength



WIRE VORTEX

Part# 40001

If you need an extra pair of hands on the job, try the Wire Vortex. This wire pulling guide fits on 4" square boxes and saves you tons of time when pulling wire.

Features:

- Protects wire from damage when pulling
- Can pull wire in all 4 directions
- Use for standard (shallow) or deep boxes
- Built with durable, impact-resistant plastic
- Easy to slip on and off



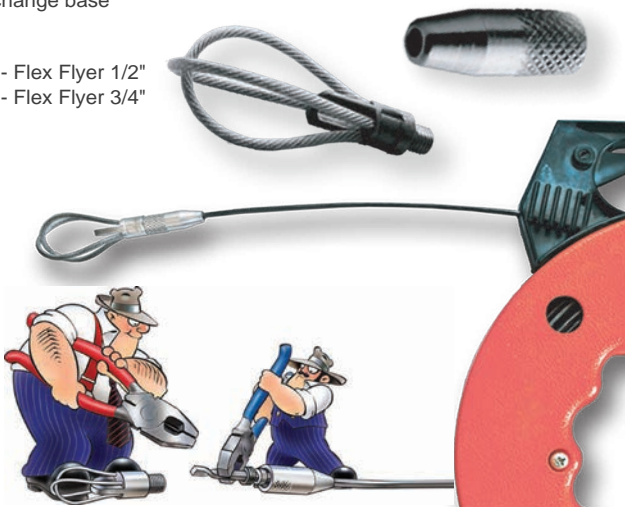
FLEX FLYER

FEATURING "QUICK CHANGE SWIVEL HEAD"

The Flex Flyer features a quick change swivel head that installs on the end of a fish tape in 20 seconds by twisting the fish tape with 2 pairs of pliers.

- Installs in under 20 seconds using two pairs of pliers, no torch needed
- Flies through those tough conduit runs
- Loop technology allows leader to glide through flex as well as all other types of conduit
- Loops allow leader to be snagged from other end of conduit run when necessary
- Standard 1/4"-28 threads allow for the use of other types of leaders on quick change base

Part#
69050 - Flex Flyer 1/2"
69075 - Flex Flyer 3/4"



FISH-HEADS

Part #69010

Tired of fish tapes getting snagged or breaking? Try Fish Heads to fix and improve your broken fish tape end. Simply tighten the Fish Head onto your fish tape with the provided Allen wrench.

Features:

- Complete spherical head reduces the chance of getting stuck
- Tapered back end
- Tested 500+ pounds
- Reusable



StingRay



- Protects expensive and fragile cables
- Protects ceiling from twisting and marring
- Prevents cables from tangling with the ceiling, saving time and labor
- Smooth interior creates an almost frictionless chase
- Side slit allows for easy cable removal at any time
- Easy to install and remove

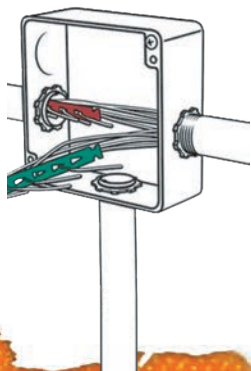
Part# 40400



SNAP IN PLACE & PULL YOUR WIRE

SNATCH STRAPS

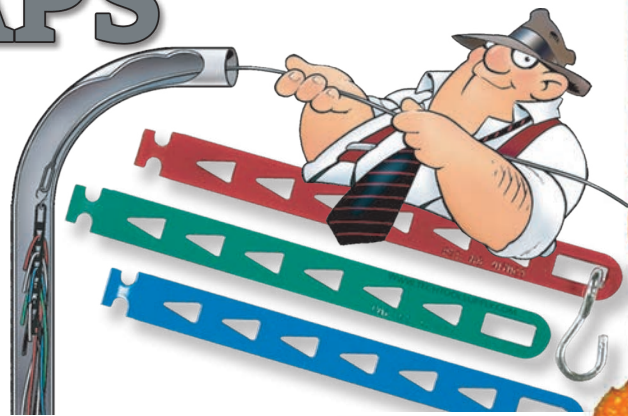
Part #69455



- Pull more conductors with less effort
- Can be chained together
- Color coded for easy circuit and phase identification

MFG Note:

Snatch Strap handles #22 - #12 AWG. If additional wires are required simply add additional straps.



The JIMBO

WIRE PULL BRACKET

The Jimbo – Wire Pull Bracket helps to eliminate cable snags and damage over sharp edges and ceiling grids. Maximize your efficiency working by yourself with a helping hand from the Jimbo.



Features:

- Set up multiple brackets making a temporary cable raceway to avoid snags or catching
- Pull hard around corners and through structural steel
- Consolidate cables to the best angle for ease of pulling



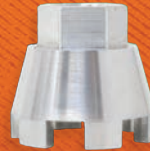
Part#40200

NUT SNUGGER

Stop bashing locknuts with your flat blade screwdriver and get yourself a Nut Snugger! Unlike other methods, the Nut Snugger allows you to install a connector on your own when it is out of reach. Using magnets, the Nut Snugger holds locknuts in place and allows you to easily install conduit on the other side. As a ratchet attachment, the Nut Snugger seamlessly tightens locknuts in seconds. The Nut Snugger is American made and features precisely cut teeth and a rigid metal construction. This outstanding attachment is light, strong, and comes in 1/2" and 3/4" variations. Both are available together in a kit.



Part#
80050 - 1/2
80075 - 3/4
80090 - Kit (1/2" and 3/4")



Features:

- Patent Pending
- Made in USA
- Can be used with adjustable wrench, tongue and groove pliers, 3/4" box wrench, and 3/8" drive ratchet.



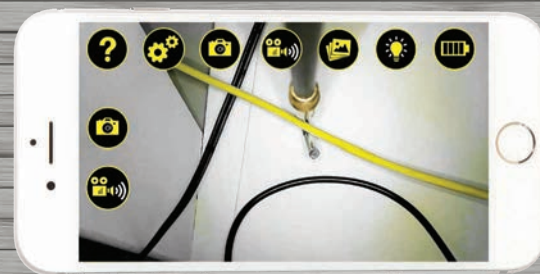
THE LOCKNUT WRENCH



How many locknuts have you bashed with your flat blade screw driver? The Locknut Wrench allows you to tighten locknuts quickly and works great in tight spaces. The patent pending design is available in 3 sizes.

- Offset ends allow access in tight locations. Handle cut away sections are engineered to exact lock nut engagement and rotation
- Singular handle prevents wrist tension
- Clear permanent laser etched markings to ease use
- Comprised of durable steel and strong enough for any job

See website for part numbers and kit details



WiFi INSPECTION CAMERA AND CABLE PULLING TOOL



THERE'S A FERRET FOR EVERYONE

NEW FERRET RANGE	NEW PRODUCT		
	FERRET LITE [®] Part #99317	FERRET PRO [®] Part #99320	FERRET PLUS [®] Part #99330
Save photos & video to smart device	✓	✓	✓
Always up function	✓	✓	✓
Battery charge time to 95% charged	1.5hrs	1hr	1hr
Suitable for cable pulling	✓	✓	✓
Able to change resolution & WiFi channel	✗	✓	✓
Lens (720p)	Fixed focus	Variable focus	Variable focus
Onboard Memory	✗	✗	✓
Built in non-contact voltage detector	✗	✗	✓

Visual inspections, cable installations, maintenance and repair work made easy with the Ferret

Ferret Tools - for those of you that care about having the most reliable and durable tools with the latest smart technology to help work faster, easier & safer - Inspect with a Ferret.



FIND IT
Locate cables with ease



HOOK IT
Visibility in complete darkness



PULL IT
Pull cabling in half the time

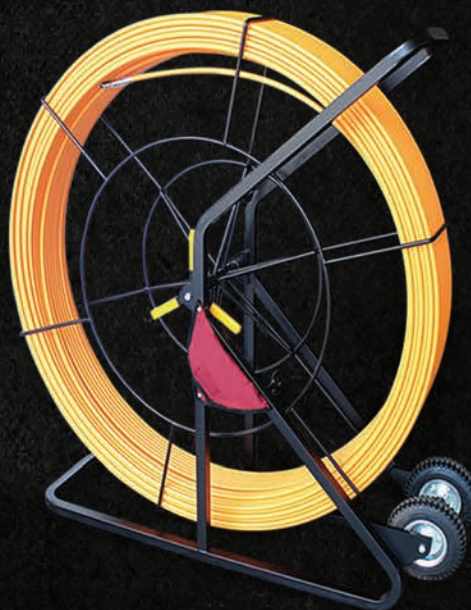
FOR EASIER, FASTER & CLOSE UP VISUAL INSPECTIONS.

INSPECT WITH THE FERRET - SMART TOOL. SMART CHOICE.

FIBER RODDERS

1/2" Part# FS12657 - 1/2" x 657' Part# FS12985 - 1/2" x 985'

- Fiberglass reinforced plastic with durable plastic surface coating
- Up to 985 ft in length, the 1/2" fish tape is excellent for the big fishing jobs
- Threaded stainless steel ends can be coupled with 4 different end types, including flexible guide, roller guide, pulling eye and clevis.
- High quality, cantilevered frame design provides good leverage and better balance when hoisting onto wheels
- Rubber wheels provide good traction and a smooth ride when transporting from truck to work location



3/16" Part# FS316300 - 3/16" x 300'

- Fiberglass reinforced plastic fish tape with durable low-friction polyamide coating
- Light and durable steel frame with anti-corrosion surface treatment
- Adjustable knob allows for easy control of wheel rotation speed
- Threaded brass ends can be coupled with ridged pulling eye or flexible guide type leads.
- Brass ends affixed with embedded pins for extra strength, holding up to 300 lbs of force.



1/4"

- Fiberglass reinforced plastic with low-friction plastic coating for smooth pulling.
- Breaking strength of 1400 lbs
- Available in a variety of lengths
- Sleek brass pulling eye with large eyelet for easier access
- Light and durable steel frame with anti-corrosion surface treatment
- Adjustable knob allows for easy control of



Part# FS14200 - 1/4" x 200'
Part# FS14250 - 1/4" x 250'
Part# FS14300 - 1/4" x 300'
Part# FS14400 - 1/4" x 400'
Part# FS14500 - 1/4" x 500'
Part# FS14600 - 1/4" x 600'

FIBER RODDERS SPLICE KIT



FS12.END -End Repair for 1/2" Fibersnake
FS12.EYE -Eye-Loop for 1/2" Fibersnake
FS12.SPL -Splice Repair for 1/2" Fibersnake
FS14.END -End Repair for 1/4" Fibersnake
FS14.SPL -Splice Repair for 1/4" Fibersnake

PLASTIC COATED GLOWFISH

5/32" Diameter luminous rods

Super flexible glow-in-the-dark rods with our new plastic coating process. Great for tight jobs. The handy clear carry case keeps them constantly "charged" and ready.

KITS

GLF407 Glowfish Kit contains: 1 - 6' B/F, 4 - 6' M/F w/ tips
GLF408 3' Glowfish Kit contains: 1 - 3' B/F, 7 - 3' M/F rods w/ tips

PLASTIC COATED FIBERFISH II

3/16" Diameter orange rods

The most versatile of the Fiberfish with our new plastic coating process. Perfect for a wide range of installation situations and challenges.

KITS

PCF207 Fiberfish Kit contains: 1 - 6' B/F, 4 - 6' M/F w/ tips
PCF208 3' Fiberfish Kit contains: 1 - 3' B/F, 7 - 3' M/F rods w/ tips
PCF230 "FourPack" contains: 1 - 3' B/F, 3 - 3' M/F, tip, and FishHook in vinyl pouch

REPLACEMENT RODS

GLF403 6' Bullnose/Bullnose (B/B) rod
GLF406 6' Bullnose/Female (B/F) rod
GLF410 6' Male/Female (M/F) rod
GLF414 3' Bullnose/Female (B/F) rod
GLF415 3' Male/Female (M/F) rod




REPLACEMENT RODS

PCF206 6' Bullnose/Female (B/F) rod
PCF210 6' Male/Female (M/F) rod
PCF214 3' Bullnose/Female (B/F) rod
PCF215 3' Male/Female (M/F) rod



FFS: FUSION FISH TAPE

- 
- Available in 100 and 150 feet lengths
 - Non-conductive material
 - Brass tipped eyelet end piece
 - Polyester coated fish tape with fiberglass core

Part# EGC100 - 100'

Part# EGC150 - 150'

Wire Rope with Polymer Cover in Yellow Case

**THE BEST HYBRID
FIBERGLASS/POLYMER FISH
TAPE ON THE MARKET!
MADE WITH PRECISION IN ITALY.**

POLYESTER FISH TAPE IN CASES

THESE NON-CONDUCTIVE, LIGHT-WEIGHT FISH TAPES IN CASES ARE PERFECT FOR LINE OR LOW VOLTAGE FISHING. AVAILABLE IN SINGLE OR THREE STRAND DEPENDING ON THE JOB.

Part# EP615BC - 2 strands in black case - 49.2' (15m)

Part# EP630BC - 3 strands in black case - 98.4' (30m)

TELESCOPIC RODS

Part# 82016 -Standard Telescoping Pulling Poles 16"

Part# 82026 -Standard Telescoping Pulling Poles 26"

FEATURES:

- Non-conductive, wound filament fiberglass won't rust or corrode
- Polyester resin baked enamel coating
- All purpose hook included



POLYESTER FISH TAPE

4 CORE GREEN & BLACK POLYESTER FISH TAPE:

100ft (30M) The 4 core twisted polyester fish tape is the strongest and most powerful product suitable for long distance electrical work.

Part# EP430G

3 CORE RED & BLACK POLYESTER FISH TAPE:

100ft (30M) 3 core twisted polyester fish tape for increased strength and flexibility.

Part# EP330R

2 CORE POLYESTER FISH TAPE:

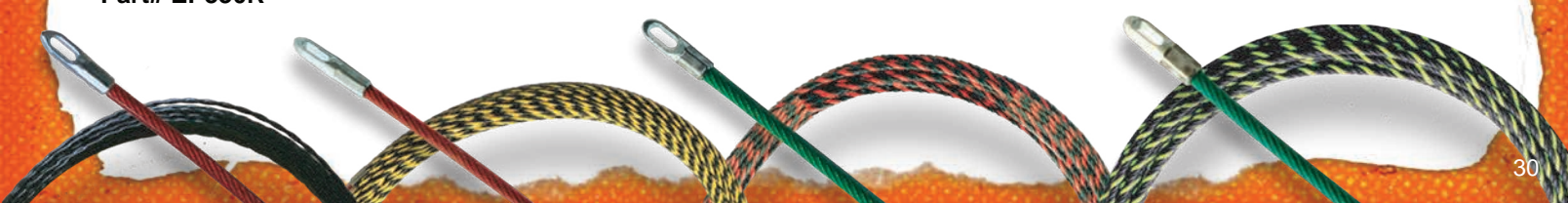
165ft (50M) 2 core twisted polyester fish tape coated for reduced friction.

Part# EP250Y

SINGLE CORE POLYESTER FISH TAPE:

100ft (30M) single core twisted polyester fish tape for coated for a light, economical option.

Part# EP130B

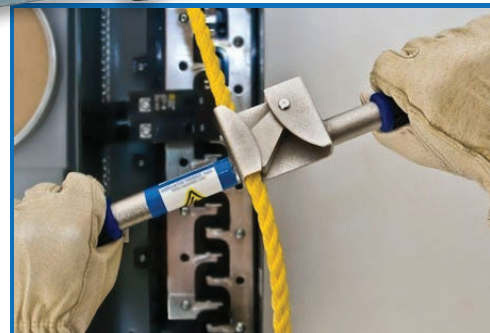




ROPEMATIC^{PRO}

THE SMART WAY TO PULL

Part #42400



STOP HURTING YOUR HANDS AND WRISTS.

STOP BREAKING EXPENSIVE FISH TAPE.

PULL ROPE AND FISH TAPE THE SMART WAY WITH THE ROPEMATIC.

The Ropematic has a durable latch that grabs rope or fish tape when you are pulling down. As you pull back up, the latch loosens and easily slides up the rope or fish tape. You can then pull down again and the Ropematic will grab the rope or fish tape, pulling it down.

The PUCK^{USA}

Ground Clamp Socket

Part# 40950



A NEW SOLUTION FOR INSTALLING GROUND CLAMPS

Grounding clamps are used to ensure complete discharge of electricity while servicing or maintenance of electrical power systems in substations. There are many varieties of clamps manufactured by different companies, each with different fastening configurations such as an eye-bolt or a T-handle. Technicians use screwdrivers or channel lock pliers to tighten the grounding clamps. This sometimes produces a poor contact on the bus because of lack of accessibility. The Puck, when used with a standard 1/2 inch drive socket, provides the proper leverage in limited visibility or access areas, ensuring a proper contact on the bus.



An "indicating line" for use when working blind.



The Puck fits most brands' T-handles.



The Puck also fits most brands' eye-bolts.

BENEFITS:

- Allows ground clamps to be quickly, easily, and more securely installed in hard-to-get-to places versus the screwdrivers or channel-lock pliers that are currently used
- Lightweight and durable
- Allows the user to see where they need to line up
- One tool can be used with multiple manufacturers' equipment, multiple types (eyes and Ts) and multiple sizes
- Works with existing industry-standard equipment that will be in use for generations to come
- Provides proper leverage on short T-handles

SolderM8

SolderM8 is an Electricians best Mate

An amazing little gadget created by an Electrician for Electricians. It makes soldering LED strip lights so easy even your most inexperienced apprentice will conquer the skill in no time. You can now provide a high quality, durable finish on full lengths of LED strips in a fraction of the time – it will cut your costs and up your profits. For these reasons SolderM8 is now fast becoming an essential in every professional Electrician's toolbox.

What it Does

The magical underside sticks to flat or textured surfaces at every angle, even upside down. Insert the wires and it holds them in place firmly while you dab on solder and hey-presto the job is done and you move on to the next joint quickly, cleanly and easily.



Part #SM802

JET LEVEL

This convenient and strong pocket level comes with 4 precision vials of 0, 30, 45, and 90 degrees.

FEATURES:

- CNC milled from 6061 aluminum extra large "VD" groove, straddles up to 10" diameter
- Rare Earth magnets for extra holding
- Water and shock resistant



Part# 45404



Breaker Lok

Secure any circuit breaker in the ON Position with ease!

- Universal lock fits most breakers & standard toggle switches.
- Set screw and rigid leg prevents lock from slipping off breaker.
- Reusable & corrosion resistant.

Part# 75000 - 5 Pack



TrunkTie

What is Trunktie?

Trunkties are a simple solution designed to hold, hang, or tag things in position relative to an unpopulated port. Their most common use is to hold tags for identifying network ports, but our customers have found countless creative applications for their use.

How it works

Trunkties plug into an unused port, providing a flexible cable that secures into a multipurpose loop. That's all, it's that simple.



Part # 75065 (Pack of 25)

POKE-E

TAME YOUR CABLES

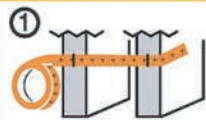
Dreamed up by an electrician who was tired of his wired being buried in the walls. The **Poke-E** is a perforated strip that solves that issue by holding your cables in the exact place you intended them too. The **Poke-E** is installed in the rough in stage of construction in both residential and commercial applications.

Install in 3 easy steps: Nail, Cut and Poke

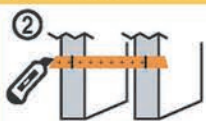
Features:

- Made in USA
- Holds up to a 1/2" fixed diameter cable
- Patent Pending

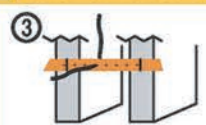
The Poke-E is intended for use with Class 2 wiring only.



STAPLE



CUT



POKE



LASER PLUMB BOB

Looking for a better way to lay out complex ceiling and high bays? The Laser Plumb Bob, self leveling vertical laser from Rack-A-Tiers is the answer!

FEATURES:

- Solid brass construction
- Factory aligned laser module calibrated to precise 0.15 accuracy
- Magnetic damping for quick stabilization
- Self leveling and aligning (vertically)
- Durable plastic carry case
- Battery included



PART

88455 -Laser Plumb Bob

REPLACEMENT PARTS

88-ARM - Laser Plumb Bob Arm With

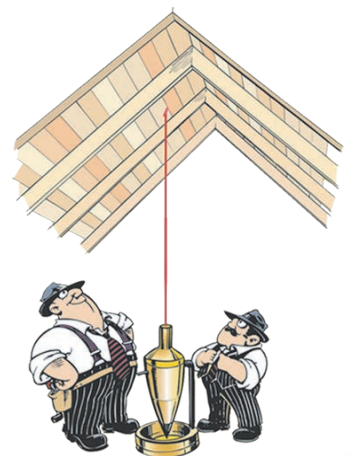
MAGNET ATTACHED

88-BASE - Laser Plumb Bob Base

88-BAT - Laser Plumb Bob Battery CR 123



BEFORE



AFTER

MFG NOTE:

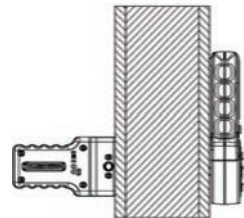
For all commercial, industrial, or residential installations. Great for laying out ceiling lights.

MAGNESPOT



The Magnespot is a reference point locator that gives users complete self-assurance before drilling, cutting, or any other task you may previously had to do blindly. Place the Magnespot Transmitter on the wall, ceiling, or floor that you need to drill.

On the other side hold the Receiver in the general direction of the transmitter, the red LED arrows on the Receiver will indicate to you which direction to move. When all 4 Arrows illuminate, the Transmitter and Receiver are lined up within a 1/2 inch.



Senses up to 30" through concrete & 60" wood frame wall

Part# 42900

Extremely powerful, yet delicate, magnetic wire snake for fishing wire through walls. It even works through insulation! This new version has a much stronger magnet and a smoother rolling surface.

FEATURES:

- Hand roller with powerful magnet & smooth finish to avoid damaging walls
- 6' ball chain included
- Flexible leader with magnet head
- Also makes a great stud finder

MFG NOTE

Any fiberfish can easily be threaded onto the magnet head. This will help push through dense insulation and guide through fire-block drill holes.

Part# 42800



LASERLINE

REDUCE EFFORT IMPROVE PRODUCTION CUT LABOR EXPENSE

Tired of wiggling through a crawl space just to drag your wire to the other end? Fire the Laserline, attach your wire, then walk around and pull it across while standing. It's that easy!

The CO2 powered gun shoots a foam dart with a line attached to it up to 200ft. Stop climbing your ladder and moving it every ten feet to pull your wire across a t-bar ceiling. Pull your wire the entire distance in one shot with the Laserline!

MFG NOTE

- The Laserline Kit includes 1 gun, 2 spools of line (1200 ft each), 2 darts and 2 generic CO2 cartridges.



FEATURES:

- Accurately install a pull line up to 200ft
- Cuts labor costs and improves production
- Ability to span over heavy and hard to move objects found in many commercial structures
- Replacement line and darts available

Part #
83000 - Laserline Kit
83001 - Replacement Line 2-1200ft
83003 - Dart 3 Pack

FLASHLIGHTS



THE STICK BUG

The Pocket Light just got brighter, stronger and better. Some call it supercharged! With the new technology of COB LED technology, it has 150/160 lumens - 2 times the amount of the original pocket light. With the durable and strong pocket clip and improved magnetic base, you'll never be left out in the dark again.

FEATURES:

- COB LED
- 160 Lumens
- Operates on (3) AAA batteries
- Up to 7 hours run time
- Water resistant button
- Batteries included

Part# 53600P1



THE SILVER BULLET

The Silver Bullet is a light-weight, aluminum LED flashlight that charges in a 12V DC power outlet.

FEATURES:

- CREE LED 300 Lumen
- Li-ion Battery
- Aluminum Alloy
- Recharge Time 2-3 hours

Part# 53800



HEAD LIGHT

USB RECHARGEABLE

Bulb: COB LED

Max Output: 150 Lumens

3 Modes: High, Low and Strobe

Runtime: High (4 Hours) Low (12 Hours)

4-hour charge time

Impact and Water Resistance

Part# 54075

BAT LIGHT

The Bat flashlight has a durable, scratch and corrosion resistant anodized aluminum frame.

12" Bat Flashlight

FEATURES:

- 3W Cree LED 300 Lumens
- 3 x AAA Batteries Included

Part# 53750



PULSE TRACER

Part# 99030

- The most affordable circuit tracer on the market!
- Rated for 120V/15A



The Pulse Tracer is an audible and visual circuit identifier. Plug it in, and instantly create a visual and audible pulse. The Pulse Tracer allows a clamp meter to pick up the variance in current at the panel for easy circuit identification.



Includes gator clamp adaptors.

PLUG MASTER

The Plug Master combines a full function dual-outlet circuit tester with 220V detection and multiple direction bubble-levels. Eliminate the need for multiple tools to test and straighten any wall outlets.

FEATURES:

- Acts as horizontal and vertical level
- Use for diagnostics
- Perform quick wiring checks
- Panel identifies conditions shown by LED indicators
- Removable side panels cover outlet during insertion



Part# 99102

AC SENSOR & ULTIMATE AC SENSOR

Prevent electrical shock with this simple tool to locate dangerous defective grounds. This handheld device helps you determine the presence or absence of 50-1000 Volts AC in insulated wires, wall receptacles, fuses, junction boxes, and voltage carrying electrical systems. The bright, red glow indicates AC voltage.

FEATURES:

- Non-contact detection of 50-1000 VAC
- Includes 2 replaceable AAA alkaline batteries
- Senses voltage without metallic contact
- Outstanding safety instrument



Part# 99000 (Red Glow - No Sound)

Part# 99001 (Red Glow - w/Sound)

DUALCHECK™ NON-CONTACT VOLTAGE TESTER

Save time and money with 2 popular testers in 1 unit - featuring a Non-Contact Voltage Detector on one end and GFCI Outlet Tester on the other.

FEATURES:

- 360 degree LED indication
- Loud beeping audible indication
- Exclusive 1 LED readout. No Charts. Instant results
- On/Off button



Part# 99150

AC SPLITTER

The AC Splitter features a receptacle and GFCI tester as well as the ability to measure the current through the measuring rings.



Features:

- Voltage measurement ring
- Current measurement ring (x10 and x1)
- GFCI button
- Socket connection indicators
- Current maximum: 15A
- Input voltage: 120V

Part# 99020

STUD BALL

MAGNETIC STUD FINDER

The Stud Ball is a protected magnetic stud finder that will out-perform all other types of magnetic stud finder on the market. Unlike other steel stud finders, the Stud Ball can detect metal through 1/2" or 5/8" drywall or other thicker building materials. Will also work through ceramic tiling and up to 3/4" plywood paneling.



- Rare Earth magnets with 27 lbs of pull
- No batteries required
- Detects screws or nails in wood frame walls



Part# 52300

PIPE SPINNER



Wrap a 10 foot pipe in 10 – 20 seconds! The Pipe Spinner allows you to speed up the process of taping IMC, galvanized conduit or black iron conduit in mil tape for underground applications. Instead of taping the pipe by hand, simply attach The Pipe Spinner to your drill and have your co-worker hold the tape while you spin the pipe.

- 1/4" drill attachment for quick change drills.
- Available in 2 sizes: 3/4 in. and 1 in.
- Saves time and money.

Part#
40907 - 3/4" thread
40910 - 1" thread



ROUGH-IN STICK

Part# 82000



Marks studs at 12", 18", 42", 48" & 60"

FEATURES:

The Rough-In Stick allows you to mark out devices conveniently and efficiently by utilizing specifically designed holes to fit your felt marker. The Rod also features a telescopic pole for those tricky fishes.

- Easily mark stud walls for device installation
- No need to use your tape measure while laying out devices
- Telescopic pole aids in pulling wire above ceiling grids and areas of limited access
- Extends up to 16'



THE FERRET

CABLE PULLING & FISHING TOOL

COMING SOON!

Part#
4 Meter - EP04M
8 Meter - EP08M

- Retains straightness when uncoiled, but will flex in the intended direction
- Non-conductive material with high tensile strength and outstanding durability
- Guide wheel designed to glide over obstructions and hard edges
- Ideal for wall cavities, suspended ceilings and confined space
- Includes a hook attachment for fishing cables





GPS LIGHTLOCK ASTRONOMICAL TIMERS

Onboard GPS does all your programming & maintenance

GPS LightLock automatically sets your date/ time & location, programs the switch times for your location, self-recovers from power outages & keeps the clock timed to the GPS atomic clock. You'll never have to deal with controls maintenance again, and you never pay a fee to use the GPS system!

Pays for itself many times over in servicing costs alone

Servicing controls is very expensive. Electricians perform hazardous work. They are well paid, as they should be. The retail price of GPS LightLock is a fraction of the cost of a single service trip charge to replace a photocell or re-program a timer. GPS LightLock now offers custom programming to meet your requirements stored in memory forever, and you still won't have to program a timer ever again. Still self-recovers from power outages and still requires no user programming, maintenance or even batteries!



**Twist-Lock Astronomical
Timer 120-277VAC**

Installs in under a minute!

The world's only fully automatic astronomical timer. Switches lights dusk-to-dawn anywhere in the world. Plug & play. Never needs programming. Self recovers from power outages. Direct replacement for twist-lock photocells.

Part# 85-GPS-MV-T



**Wire-In Astronomical
Timer 120-277VAC**

Our most popular model. Includes twist-lock astronomical timer plus wire-in twist-lock socket with 1/2" standard female thread. Direct replacement for all wire-in photocells and programmable timers.

Part# 85-GPS-MV-W



**THE WORLD'S MOST ACCURATE
TIME KEEPING SYSTEM**

GPS LightLock

- Self-Programming
- Maintenance Free for 15 Years
- Self-Recovers from Power Outages
- No Servers, Software or Network Infrastructure
- Nothing to Learn, Monitor or Maintain

**THE WORLD'S MOST RELIABLE
SMART TECHNOLOGY**

TEMP-IT TEMPORARY LIGHT SOCKET

- Fits in most residential LED recessed cans
- Use A-19 Medium Base LED light bulb only
- Sold in boxes of 12 (lamps not included)

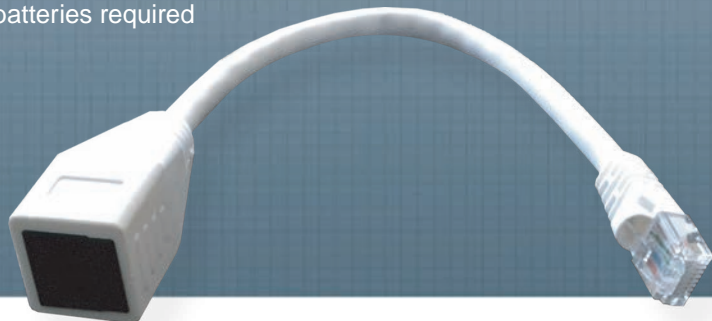


Part #99050

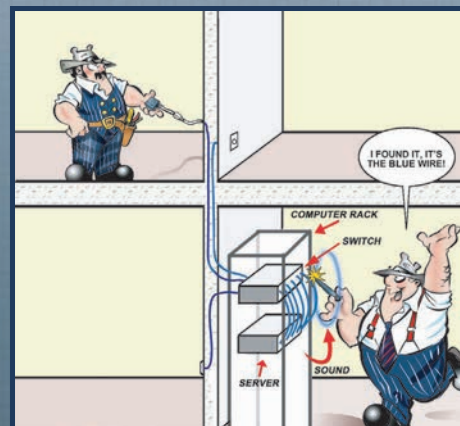
TRACER WIZARD TONER ADAPTOR

Features:

- Devices do not have to be taken offline to tone out
- Locating cables is fast and easy as long as the Wizard is connected between the tone generator & jack
- A must have tool for a toolbox
- No batteries required



TURN YOUR ANALOG TESTER INTO A DIGITAL ONE!



Part# 99060

PANEL BUDDY

KNOCKOUT SYSTEM

Tired of trying to remove knockouts? Let the Panel Buddy take care of them for you. This simple but genius tool removes knockouts in half the time, with half the effort.



Part# 7WBK100

- Kit removes knockouts on Electrical, Security, Alarm, and Datacom Panels.
- Works with lipped and non-lipped panels.



Tie Lips

Spend more time installing and less time picking up. The Tie Lips will hold your cable ties conveniently on your belt.

- Keeps your ties in place
- Quick and easy dispensing
- Holds different types and sizes
- Includes handy belt clip



Part# 43800

NUT BLASTER

UNIVERSAL WIRE CONNECTORS

- Fast, easy installation
- Prevents sore fingers and cramping hands
- Available in two sizes

The Nut Blaster makes quick work of tightening wire nuts. Simply attach the Nut Blaster to any standard drill and tighten your wire in seconds! Say goodbye to the carpal tunnel and hours wasted tightening wire nuts by hand. When the time comes to splice all your wires together you'll be able to finish each wire in 3-4 revolutions. The Nut Blaster will last you a lifetime with its high impact heat stabilized Delryn plastic construction and steel shaft. The Nut Blaster is compact and light making it the perfect addition to any electrician's toolbag. Our XL edition is fitted for residential sized wires, and XXL for even larger jobs.



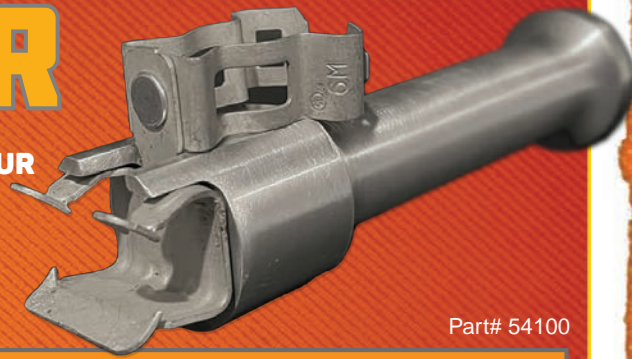
Part#
72101 - XL
(Fits all brands yellow, tan & red twist on wire connectors)
72102 - XXL
(Fits all brands large grey & blue twist on wire connectors)

CLIP WHACKER

THE CLIP WHACKER IS SPECIFICALLY DESIGNED FOR HAMMERING IN CLIP ON BEAM CLAMPS. STOP SMASHING YOUR FINGERS, USE A CLIP WHACKER.

PRODUCT FEATURES

- Rare magnets on the surface help hold the clip in place
- Fits all sizes of flange: 1/8"-1/4", 5/16"-1/2" and 9/16"-3/4"
- Save time & money with minimal effort
- Much safer
- Easy to use
- Doesn't take up much space in tool bag (just like another screwdriver)
- No more flying clips!!
- No more hammering fingers!!
- Work smarter not harder
- MADE IN USA



Part# 54100



GROUND POUNDER

Tired of dragging out the hydraulic hoses to drive a ground rod? The Ground Pounder™ was designed by a lineman who knows about driving ground rods. Quickly and safely drive standard 5/8" and 1/2" ground rods with both feet on the ground. The Ground Pounder™ handle slides over the ground rod to safely contain the rod while the weighted end drives the rod down. The length of the handle allows for a full striking stroke while the weight does all the work. Once the handle is flush with the ground, turn the Ground Pounder™ over and use the flat end to finish the drive.



Part #67150



SLUGGOX™

THE SLUGGO-OX IS THE ULTIMATE GROUND ROD DRIVING TOOL.

Part #67119

Just one piece and incredibly strong. It delivers the kind of power and strength you need to easily install ground rods, rebar, & other metal objects.



FEATURES:

- Incredibly strong: made of 3" hot-rolled, heat-treated, hardened steel
- 3 1/2" bore to accept 3/4" and 5/8" ground rods
- 80% more striking surface
- Yellow zinc chromate surface to deter rust



"I THINK IT'S TIME WE GOT A SLUGGO-OX!"

EFERGY ELITE Classic

Wireless Energy Monitor



The Efergy Elite Classic wirelessly sends information on energy usage to the display monitor. Simple and easy to install, the monitor updates every 10 seconds to accurately track where energy is being used.

No need to add a separate meter base to monitor multiple suites in your home!

The Elite Classic updates every 10 seconds so you can instantly see the impact of turning a light on or off, boiling the kettle or using your tumble dryer. It has an innovative memory function that allows you to see how much you have used today, yesterday and in the last week or month. The Elite Monitor also displays your daily average so you can see when you are using more electricity than normal and see how your average usage reduces as you change the way you do things.

Part# EF003

ACCESSORIES:



200A CURRENT SENSOR

Additional sensor for measuring current up to 200 amperes. Works with the elite or e2. Perfect for whole house applications where a 200 ampere service is installed. Split core design easily fits around wire sizes up to #4/0 AWG without breaking connections.
Part# EF012



HUB ONLINE ACCESSORY KIT

Monitor your home energy use online in real-time engage hub accessory kit. Online platform FREE of charge with no subscription or monthly fees. Access your energy data anytime.
Part# EFH01

E-MAX ENERGY MONITOR



Part# EF005

Introducing the E-Max energy monitor from Efergy! This improved energy monitor features a stylish, large 7.9" display and improved battery life. View your energy data in real time with the easy to understand display and energy use speedometer. The E-Max also includes a USB-2.0 port to download your energy consumption data.

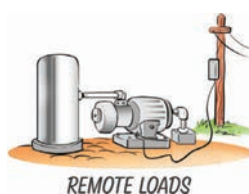
Kit Includes: E-Max Display, (2) CT Sensors and the Transmitter

Features:

- See your current energy use with a color-coded speedometer
- Look up historic data: yesterday, last week, last month, etc.
- Input your higher kW rate period to make sure you are not using high energy appliances, etc. at peak times
- Portable unit allows you to walk around the house to monitor usage
- Sleek free-standing stand or wall mounted display
- Download your energy data using a USB stick

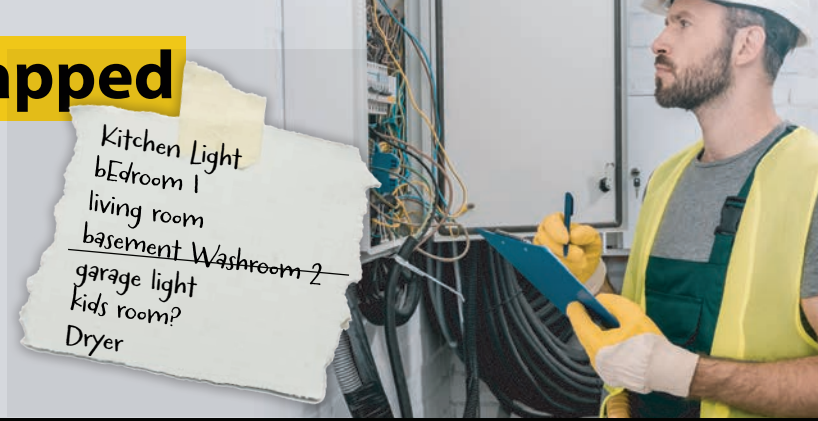


WE HAVE THE POWER TO FIND YOUR MONITORING SOLUTIONS
WE WANT TO COVER ANY SCENARIO YOU CAN THINK OF. THIS EXPANDING CATEGORY IS ON THE UPSWING, LET US HELP YOU FIND THE RIGHT DEVICE.



Still Dealing with Unmapped Circuit Breakers?

- ✗ Poorly labeled electrical panels
- ✗ Lack of proper site documentation
- ✗ Out of date, hard to read, missing information
- ✗ Wasted time trying to find the right breaker



THE **CIRCUIT IQ** WILL FIND AND MAP EVERY ELECTRICAL ISSUE WITH A CLICK OF A BUTTON



Make More Money

- ✓ Be more competitive by uncovering additional billable work for your customers.
- ✓ Create opportunities to offer your clients more services while looking like a hero!



Save Time

- ✓ No more repeatedly walking back and forth from the breaker to the electrical panel.
- ✓ Start and finish jobs in record time.



Work Smarter

- ✓ Locate and map every device on your panel within minutes.
- ✓ Trace power on multiple circuits at the same time from any distance accurately.



Print Labels/ Panel Directories

- ✓ Identify and automate electrical system & panel directory labeling within minutes.
- ✓ Always have an accurate record of previous work stored on your smart phone device.



HOW TO 'POWER MAP' YOUR CIRCUITS WITH THE CIRCUIT IQ



1
Plug in your mappers



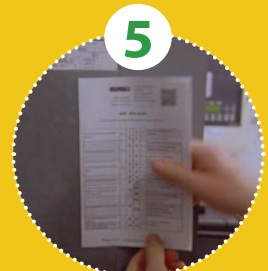
2
Map it with the Circuit IQ app



3
Print and label your receptacles and devices



4
Cycle your breakers



5
Print the panel card and you're done!

Ready to start POWER MAPPING?

Startup Kit

Part #99400

The kit includes:

- ✓ 9 Mappers
- ✓ Wireless Gateway
- ✓ Wireless Label Printer
- ✓ Commercial Carrying Case



Mapping a BIG job?

Mapping Expansion Kit

Part #99405

- ✓ Includes 30 Mappers (does not include other items in the Startup Kit)



OPEN SPLICE JUNCTION BOX

REPAIR OPEN SPLICES QUICK & EASY

Make those dangerous open splices safe and up to code. The Open Splice Junction Box allows you to enclose the wires without the need to disconnect them.

FEATURES:

- Made in USA
- ULC approved
- Made from recycled materials
- DIY friendly
- Patent Pending

Part# JB400

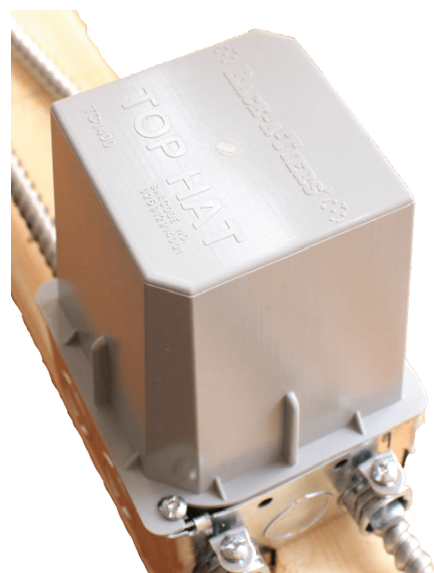
Pack of 25 JB400.P25

Pack of 100 JB400.P100



TOP HAT

The Top Hat – High Volume Wire Cover is a box extension and cover plate all in one. This patent pending design adds an extra 35 cubic inches of box fill to a 4x4 junction box. The Top Hat allows to leave your wires sticking straight out of the box for easy installation. No need to worry about coiling up your wires in order to fit a flat cover plate.



- ULC Approved for USA and Canada
- Adds 35.8 cubic inches to the existing junction box
- Plenum Rated
- Made in USA
- Suitable for use in air handling spaces
- Designed for 4x4 junction boxes in dry locations

Part#

Pack of 5 - TC1400-5

Pack of 50 - #TC1400

DAVIS MULTI-PLUG

1 PLUG | 9 CONFIGURATIONS

9 NEMA CONFIGURATIONS IN 1

The Davis Multi-Plug more utility, convenience, and versatility than any other.

REDUCE INVENTORY

Always have the right plug in the truck and on the shelf. Guarantee efficient use of your time when you need it

ONE TOOL ASSEMBLY

Our plug can be fully assembled with nothing more than a flat head screwdriver. No specialty tools required.

NO MORE STRIPPED SCREWS

Our electrical cord clamp system uses a simple hose clamp to secure the cord. Only one screw to be tightened and no plastic to be stripped.

UNMATCHED POLARITY REVERSAL

Reversing polarity is simply adjusting the brass prongs positions. No need to rewire the device. A plug that takes notes Designated area for notes like equipment specification, location, or anything else necessary to get the job done.

HIGH VISIBILITY RED

Our high contrast bright color combination attracts the eye and reduces crush accidents.



- 14-30 1 PH, 125/250 V, 30 AMP
- 14-50 1 PH, 125/250 V, 50 AMP
- 14-60 1 PH, 125/250 V, 60 AMP
- 15-30 3 PH, 250 V, 30 AMP
- 15-50 3 PH, 250 V, 50 AMP
- 15-60 3 PH, 250 V, 60 AMP
- 18-30 3 PH, 120/208 V, 30 AMP
- 18-50 3 PH, 120/208 V, 50 AMP
- 18-60 3 PH, 120/208 V, 60 AMP



CableClear is a patented new cable management product for wall mounted TV's enables you to quickly and easily hide eyesore TV cables inside the stud wall without any special DIY skills. Add cables seamlessly at any point and time after the CableClear kit is installed. CableClear creates a 50mm (2") conduit inside the wall cavity so that you can fish the cable through and hide them completely. There is no damage to the wall during cable installation so there's no repairing or re-painting afterwards.

- CC001 - Cable Clear Kit
- CC002 - Cable Clear Extension Kit
- *For replacement part numbers visit Rack-A-Tiers.com



PROLOCK

LOCKING SOLUTIONS

The patented ProLock locking cord connector was designed to prevent all extension cords with standard straight blade 15A – 120V plugs and connectors from pulling apart. It eliminates the problem of accidental disconnects that result in unnecessary power loss.



See website for Part #s

UPHASE[®]

WIRE MARKERS

QUICKLY AND CONVENIENTLY USE THE UPHASE WIRE MARKER TO
COLOR CORDS AND WIRES FOR FAST AND EASY ORGANIZATION

PART#

52490BK - Black - 4 pack
52490BL - Blue - 4 pack
52490RD - Red - 4 pack
52490WT - White - 4 pack
52490BR - Brown - 4 pack
52490GR - Green - 4 pack
52490GY - Gray - 4 pack
52490OR - Orange - 4 pack
52490VT - Violet - 4 pack
52490YW - Yellow - 4 pack
52491 - 4 pack Kit (blue, red, white, green)
52493 - 4 pack Kit (gray, orange, yellow, brown)
52492 - Replacement tip



BEFORE

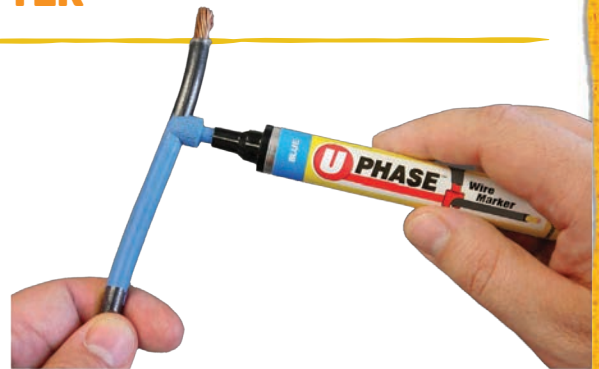
AFTER

- Electrical Panels
- Colour Coding Wire
- Identifying Wiring Circuits
- CAT-5 Ethernet Cable
- Audio/Video Cable
- HDMI Cable
- Automotive wire



UPHASE[®]

LARGE WIRE MARKERS



FEATURES

- Patented tip design marks MCM wire up to 3/4 in. quickly, effectively, as well as smaller AWG wire (U.S. Patent No. 7,320,553)
- New, resilient polyester tip lasts longer
- Marks adhere to clean sheath permanently and resist handling, abrasion, and heat
- 10 times more mileage, 20 percent lower cost than vinyl tape
- Green label paint has lower environmental impact than vinyl tape
- Drying Time Approx. 90 sec.
- Marking Temp Range 0 degrees to 110 degrees Fahrenheit (-18 degrees to 44 degrees C)

PART#

52496BK - Black
52496BL - Blue
52496GR - Green
52496RD - Red
52490YW - Yellow
52496WT - White
52490BR - Brown
52490GY - Grey



MARK MY WIRE

WIRE MARKING SYSTEM

USE HIGH DENSITY, QUICK DRYING MARKERS THE OLD FASHIONED WAY OR THREAD THE WIRE DIRECTLY THROUGH THE HOLE IN THE MARKER'S TIP! PAINTS ON 14, 12 & 10 WIRE!



AVAILABLE IN:

Blue

Part# 52480BL

Red

Part# 52480RD

Black

Part# 52480BK

PHASE IT RIGHT

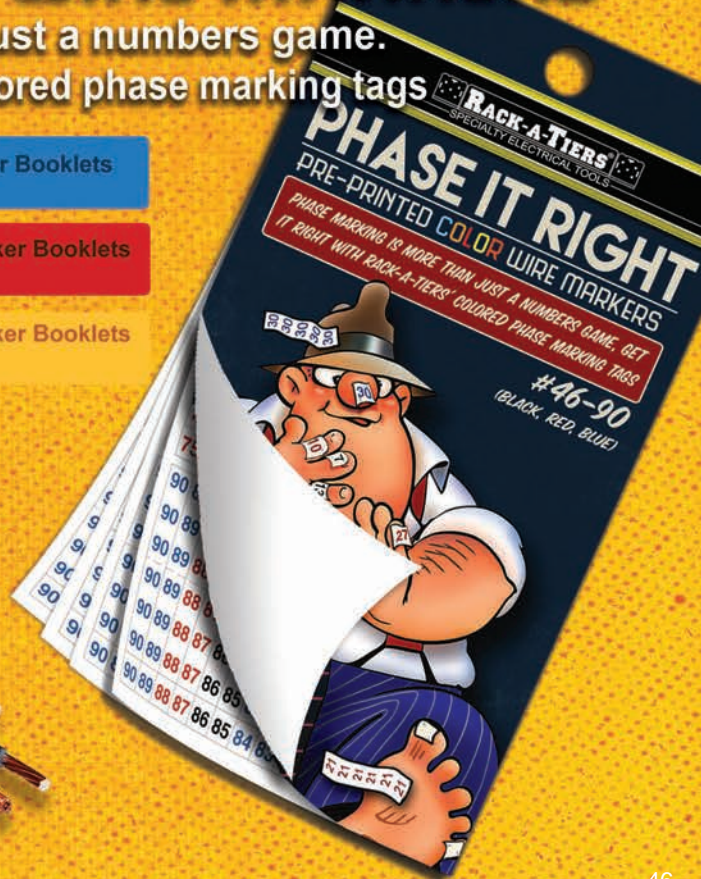
PRE-PRINTED COLOR WIRE MARKERS

Phase marking is more than just a numbers game. Get it right with Rack-A-Tiers' colored phase marking tags

52600 - Low Voltage Sticker Booklets
#1-45 (BK, RD, BL)

#52615 - High Voltage Sticker Booklets
#46-90 (BK, RD, BL)

#52645 - High Voltage Sticker Booklets
#46-90 (OR, BR, YW)



COMBO TOOL BELT

INCLUDES:

Molded support belt, Electrician's tool pouch, Large 9 pocket tool pouch, Hammer holster and tape holder.

FEATURES:

- Reinforced with bar-tack stitching & heavy duty metal rivets
- 1250 denier DuraTek fabric with high density nylon webbing around pocket openings.

Part#

43241 - Small Combo
43242 - Medium Combo
43243 - Large Combo
43244 - X-Large Combo
43245 - XX-Large Combo
43246 - XXX-Large Combo
43201 - Electrician's Tool Pouch
43202 - Lrg 9 Pocket Tool Pouch



MOLDED AIR-CHANNEL SUPPORT BELT

FEATURES:

- The first ever 'Molded Air-Channel Tool Belt' that offers incredible comfort, support, & ventilation for your back.
- The high density nylon 'Web Core' inside the padded belt provides strength to stitching & stress points.
- Metal rings are stitched to the belt's web core with high-density nylon webbing that provides the strongest way possible to attach suspenders.
- All stress points are reinforced with 'bar-tack' stitching along with heavy duty rivets.
- Double metal buckles that add strength and dependability.
- All of our belts and bags are made from double layered 1250 denier DuraTek fabric.
- Available in sizes from 26" to 54"

43401 - Small Belt
43402 - Medium Belt
43403 - Large Belt
43404 - X-Large Belt
43409 - XX-Large Belt
43410 - XXX-Large Belt



SMALL 25 POCKET TRAY TOOL CARRIER

FEATURES:

- 16 exterior pockets
- 9 interior compartments and pockets
- 1 qty 7" x 5.5" 12 compartment plastic tray
- 10.5" W x 10.5" L x 8" H
- Tape holder
- Includes shoulder strap

Part# 43707



LARGE 44 POCKET TRAY TOOL CARRIER

FEATURES:

- 29 exterior pockets
- 1 large clear pocket
- 14 interior compartments & pockets
- 2 qty 7" x 5.5" twelve compartment plastic tray
- Tape holder
- Includes shoulder strap

Part# 43706



MOLDED AIR-CHANNEL SUSPENDERS

INCLUDES:

- Adjustable thick molded foam shoulder pads
- 2" wide adjustable nylon straps
- Leather crossover divider
- Heavy duty spring hooks that attach to the rings on the molded Air-Channel belts

FEATURES:

Our popular padded suspenders easily clip onto the sturdy metal rings that are built into our tool belts. The padded shoulder straps make these the ideal set of suspenders for your tool belt rig.

Part# 43606



Boulder® Bag

BUILT ROCK SOLID®

Boulder® Bag Tool Belts are Rated #1 in the industry.
The Tool Belt of choice for over 20 years!



FEATURES:

- Double layered 1000 denier Cordura® Classic Nylon
- Long lasting Velcro® Brand Velcro
- 13 Slots / 19 Pockets
- Thick nylon webbing to strengthen pockets and hold them open
- Double locking rivets
- High density, long lasting, comfortable closed cell foam - designed to keep a belt full of tools from rubbing you the wrong way
- Original one-piece boxed bottom design

ULTIMATE ELECTRICIAN COMFORT TOOL BELT



The Boulder Tool Belts and Bags are designed for the professional that knows exactly what they need, and exactly where they need it. With Boulder you'll work better and faster using our well organized bags. Tools you use will always be within a quick, easy reach. Our design provides for simple adjustments and easy storage without spilling contents.

Made with high quality foam, and a fitted belt allows you to work all day, and tell the team this has to be the most comfortable toolbelt you have ever owned. The 'Electrician' line of belts have been specifically designed for the professional Electrician. The belt has 19 pockets and 13 slots to hold tools upright and accessible.



NOW AVAILABLE IN
CAMO

VISIT OUR WEB SITE FOR PART
NUMBERS

PROJOB

Pants & Shorts

Poly-Cotton Blend Multi-Pocket Protector Pants

FEATURES:

- Two hanging pockets that can be tucked away (One side has extra pockets, one side has tool slots)
- Tool pockets are reinforced with 100% Cordura
- Two adjustable hammer holders, cell phone pocket, two d-rings and pen pocket
- Opening on the inside for knee pads
- Material: 65% polyester, 35% cotton
- Color: Navy



Mid Weight Shorts

FEATURES:

- Two hanging pockets that can be tucked away (One side has extra pockets, one side has tool slots)
- Tool pockets are reinforced with 100% Cordura
- Two adjustable hammer holders, cell phone pocket, two d-rings and pen pocket
- Material: 70% polyamide, 30% cotton
- Color: Grey

Full Weight Multi-Pocket "High Vis" Protector Pants

FEATURES:

- Two hanging pockets that can be tucked away (One side has extra pockets, one side has tool slots)
- Tool pockets are reinforced with 100% Cordura
- Two adjustable hammer holders, cell phone pocket, two d-rings and pen pocket
- Opening on the inside for knee pads
- Material: 100% Cotton
- Color: Grey



Mid-Weight Multi Pocket Pants

FEATURES:

- Contrasting tones construction pants with holster pockets that can be tucked in, one with extra pockets and one with tool loops
- The nail pockets are reinforced with Cordura®
- Deep side pockets with room for the hanging pockets
- Two adjustable hammer holders / Two D-rings
- Folding rule pocket with tool pocket and knife button
- Height adjustable inside kneepad Cordura® pockets

FOR SIZE INFORMATION AND PART
NUMBERS VISIT RACK-A-TIERS.COM



SNAP SACK

Rough-In apron with leather lining



Most tool aprons are just made out of canvas, which is NOT the flimsy material you want full of screws, staples and countless other sharp objects – especially in such a sensitive area! If you want comfort, functionality and durability the Snap Sack is the apron for you. The leather lining will assure that you don't get poked, jabbed or shanked on the job!

FEATURES:

- No strings to tie or untie.
- Clip to your belt loops with the carabineers.
- Leather liner helps protect from damage and poke throughs.



Part# 43150

Butt Pouch Pocket Tool Holders

The Butt Pouch's are available in 3 sizes: Grande, Mini and Papa. Quick to put on and comfortable. These tool pouches fit in your pocket. Made of ballistic nylon. Lightweight & durable.

FEATURES:

- Quick to put on & COMFORTABLE!
- Tool pouches fit in your pocket
- Made of ballistic nylon
- Lightweight & durable



GRANDE

Part# 43095



PAPA GRANDE

Part# 43100



MINI

Part# 43015

Chillbana

Part #43750

Designed with built-in ice pockets to cool you down instantly. Simply wet the CHILLBANA, place on your head and add ice into the built-in ice pockets!

- Keeps you cool for up to 45 minutes in extreme heats of 120 degrees or 1hr in 90 degree weather.
- Top opens up for ventilation or to let hair through for comfort
- Keeps sweat out of eyes and off of forehead



TAPE CLIP

Most Tape Clips don't work, this one does.

Part # 43175



Exploding

GARBAGE CAN ULTRA

Part# 51020



The Exploding Garbage Can Ultra is the **new and improved** pop-open garbage can. Utilizing the same concept as our Classic Exploding Garbage Can but featuring a **reinforced hard bottom** for increased durability. Perfect for on the job, camping, tailgating or landscaping.

UPGRADED HEAVY DUTY MATERIAL

REINFORCED HARD PLASTIC BOTTOM



EXPLODING Classic GARBAGE CAN

One of our classic tools that everybody loves, the Exploding Garbage Can comes in use every single day. This collapsible trash container, featuring an internal support spring that "springs into action", is made of heavy duty, tear resistant 600D Oxford Polyester fabric.

FEATURES

Size of 19" x 24" when open
Size of 1 1/2" x 24" when collapsed

Part# 51000

FEATURES:

- Sturdy
- Comfortable
- Hook & Loop Straps

Part# 66455



Gel Implanted

KNEE PADS



BOOTIES

Booties available in bulk and bags of 6 pairs.

Part#

47095.B - Booties (25 Pairs)

47099BB - Six Pack of Booties



FILLERS & CONNECTORS

KO KILLERS: PLASTIC KNOCKOUT FILLERS

Fits thin (1/32") and thick (1/8") wall thickness

Features:

- No tools required
- Snap in and out with ease
- Non-conductive, safer



- Part# KOK50 - 1/2" Filler (50/bag)
 Part# KOK75 - 3/4" Filler (50/bag)
 Part# KOK100 - 1" Filler (25/bag)
 Part# KOK125 - 1 1/4" Filler (25/bag)
 Part# KOK150 - 1 1/2" Filler (25/bag)
 Part# KOK200 - 2" Filler (25/bag)
 Part# KOK999 - Assorted Fillers Kit (25/bag)



RAT 500

Rapid Fire NMSC connector (100 Pack)

Suitable for all 1/2" knockouts
 Fast and Easy. No tools required

Features:

- 100/bag
- Single cables
- Two cables
- Install from outside

RAT 750

Rapid Fire NMSC connector (50 pack)

Suitable for all 3/4" knockouts
 Fast and Easy. No tools required

Features:

- 50/bag
- Single cables
- Install from outside

Part#
 RAT500 1/2" Connector
 RAT750 3/4" Connector



RAT750 - 3/4"	Single Cable:	8/3, 6/3
RAT500 & TT500 - 1/2"	Single Cable:	14/2, 14/3, 12/2, 12/3, 10/2, 10/3
	Two Cables:	14/2, 14/3, 12/2

TT500

NMSC Two Way 1/2" Connector (100 Pack)

Installs from inside and outside the box

Features:

- 100/bag
- Single cables
- Two cables

Part#
 TT500



STUD BUDDIES

(100 Pack)

Why Square Bushing? 70%
 More cross sectional area!
 More cables, easier pulls.

- One piece
- One hand installation
- Fits all standard steel studs & punches
- Fire rated V.O.
- Faster, easier to use

Part#
 SB220 - ROUND
 SB240 - SQUARE



BUCKETS

Our same great connectors now available in bulk bucket form!

Part#'s

- RAT500.B2 - 1/2" Connector Qty. 200
 RAT500.B4 - 1/2" Connector Qty. 400
 TT500.B2 - 1/2" Tom 2-Way Connector Qty. 200
 TT500.B4 - 1/2" Tom 2-Way Connector Qty. 400

LEVEL JACK

HOW DOES IT WORK?

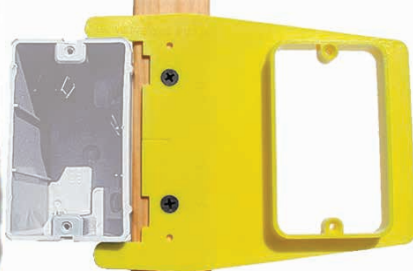
Alignment tabs reach across wood/metal studs to level low voltage outlets with A.C. boxes.

NO TAPE MEASURE • NO LEVEL REQUIRED

Available in 1/2" and 1" rise

If you're fussy about your rough-in layout, the Level Jack makes life easy. If you're not, no one will notice because you can't screw up with the Level Jack.

Just clip it on to the AC box and screw it down. No level, no tape measure, no special boxes, no special fittings required. Level Jacks fit most AC boxes.



Part#
 LJ50R - 1/2" (30 pack)



CABLE CHASE

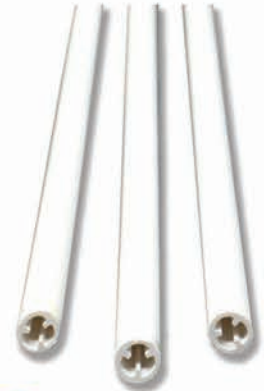
The Cable Chase is designed to provide a straight, clean path for wires with no obstructions. The brackets allow you to greatly reduce friction and stress on wires being pulled through the holes due to the hole design.

- ULC Listed
- Patented design
- Accepted by IEAI
- Follows the same guidelines as typical wire fill calculation
- Leaves room for future expansion

Part#
CC9024 - Cable Chase Single
CC9024.P10 - 10 Pack
CC9024.Bulk - 100 Pack



Part# S1203
9" Length Tubes for
Electrical Switches (4/bag)



SHIM MY BOX

Tired of twisting wire into a coil or trying to track down washers to shim your plug or switch? With the Shim My Box all you have to do is cut the length you need from this straw like piece.



#2 Homer Helper

- Quickly and easily supports multiple electrical cables.
- Hold up to 24 cables with one support.
- Greatly reduces labor time.
- Innovative design allows multiple cables to be installed in confined areas with ease.
- Rigid plastic injection molded
- US Patent Pending
- Made in the USA

Part#'s
H2024 - Homer Helper Single
H2024.Bulk - 100 Pack



H2 Homer Helper's are intended to support multiple NM-B, MC, and Low Voltage cables in electrical home runs. They will greatly reduce labour time and eliminate the use or need for staples.



Width: 20.5cm
Height: 14cm
Base: 7.5cm

AIRCRAFT CABLE & WIRE CRIMPS

- Available in 500 and 1,000 Feet.
- No need to go anywhere else - Buy it from us!
- Diameter of cable: 1/16"

Part# SC500
Aircraft Seismic Cable 500'
Part# SC1000
Aircraft Seismic Cable 1000'
Part# SCC116
Aircraft Seismic Cable Crimps (100 pack)



CROWS FEET



3/8" Metal Flange

Crow's Feet are a galvanized steel ceiling flange designed to accommodate 3/8" threaded rod.



*100 per box
Part# SCF38

MAG DADDY

MAGNETIC FASTENERS



MAG DADDY MAGNETIC FASTENERS UTILIZE ULTRA-STRONG MAGNETS TO STRAP WIRE AND CABLE. MAG DADDY MAGNETS WILL STAY ATTACHED THROUGH OIL, GREASE, PAINT OR DIRT. A VARIETY OF CONFIGURATIONS ARE AVAILABLE TO SUIT YOUR NEEDS.

CABLE HOLDERS



Magnetic Cable Holder (10 Pack)
 Part# RM050BK - 1/2" Black
 Part# RM050WT - 1/2" White
 Part# RM075BK - 3/4" Black
 Part# RM075WT - 3/4" White
 Part# RM100BK - 1" Black
 Part# RM100WT - 1" White

CABLE TIE MOUNTS



Magnetic Cable Tie Mount (10 Pack)
 Holds Standard Zip Ties
 Part# RM110BK - 10 lb Black
 Part# RM110WT - 10 lb White
 Part# RM115BK - 15 lb Black
 Part# RM115WT - 15 lb White

MAGNET MOUNT



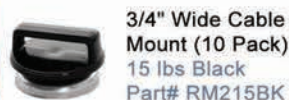
Magnet Mounts (10 Pack)
 Part# RM164SL - 19 mm/16 lb Silver
 Part# RM265SL - 23 mm/26 lb Silver
 Part# RM266SL - 26 mm 26 lb Silver



Magnetic Clamp (10 Pack)
 Magnetic Strength: 15 lbs.
 Part# RM051BK - 1/2" Black



Female Magnet Mount (10 Pack)
 1/4-20
 Part# RM420FM



3/4" Wide Cable Mount (10 Pack)
 15 lbs Black
 Part# RM215BK



Mini Magnet Cable Tie Mount (10 Pack)
 Color: Black
 Magnetic Strength: 5 lbs
 Part# RM020BK



Top J-Hook (10 Pack)
 360° Rotation
 Part# RMJ075T - 3/4"
 Part# RMJ131T - 1 5/16"
 Part# RMJ200T - 2"



Side J-Hook (10 Pack)
 360° Rotation
 Part# RMJ075S - 3/4"
 Part# RMJ131S - 1 5/16"
 Part# RMJ200S - 2"



Cable Hanger
 Cable Hanging Tool
 Part# RM300HT



Magnetic Bridle Ring (10 Pack)
 Part# RM125BR - 1.25" 1/4-20
 Part# RM200BR - 2" 1/4-20



1 x 7/16" Zip-Tie Pipe Mount (10 Pack)
 Part # RM1716BK

VAN MAGNETS

Got a disorganized van? Snap some Van Magnets into place to hang tools, material, etc. to keep your vehicle nice and tidy.



10 lbs 4 Pack
 Part# RV010



25 lbs 3 Pack
 Part# RV025



50 lbs 2 Pack
 Part# RV050



***All Van Magnets Include carabiner**

CABLE MOUNTS

The Rack-A-Tiers Saddle Support is a saddle where you put a screw through an d strap wire with tie wraps. Let's be honest, Rack-A-Tiers didn't reinvent the wheel with this one, but we did reinvent the price.

Another exciting, already available product we're adding are the 4-way adhesive cable tie mounts in 2 different sizes. You know what these are for. Buy them from us if you would like to.

Part# RC215WT

Cable Tie Saddle Support White
1.5" (100 pcs)

Part# RC4150WT

Cable Tie Mount 4-Way Adhesive White
1 1/2" (100 pcs)

Part# RC410WT

Cable Tie Mount 4-Way Adhesive White
1" (100 pcs)



CHASE STRAP CONDUIT BRACKET

The Chase Strap secures the short piece of conduit extending from one room to another through a sheetrock wall or other barrier such as a concrete riser. The strap is made from galvanized steel and is available in multiple sizes.

Part#

RCS100 - 1" Chase Strap - 20 Per Box
RCS200 - 2" Chase Strap - 20 Per Box
RCS400 - 4" Chase Strap - 10 Per Box



UL Listing E507150



Winnie Industries

MANUFACTURER OF FASTENING SUPPORTS

MAGNETIC CABLE TIE MOUNTS



16 LB Magnetic
Cable Tie Mount - UV Black
Part# RMW016BK



16 LB Magnetic
Cable Tie Mount - UV Black
Part# RMW016WT



26 LB Magnetic
Cable Tie Mount - White/Natural
Part# RMW026WT



26 LB Magnetic
Cable Tie Mount - UV Black
Part# RMW026BK



100 Lb Magnetic Mount
1/4-20 Threaded
Part# RMW1420F



26LB Magnetic
1 inch wide, Grip Tape Mount
- UV Black
Part# RMW226BK

MAGNETIC BRIDLE RINGS



26 Lb Magnet
3/4" Magnetic Bridle Ring,
Small Standoff, Zinc Plated
Part# RMW075BR



100 Lb Magnet
1 1/4" Magnetic Bridle Ring,
Small Standoff
Part# RMW125BR



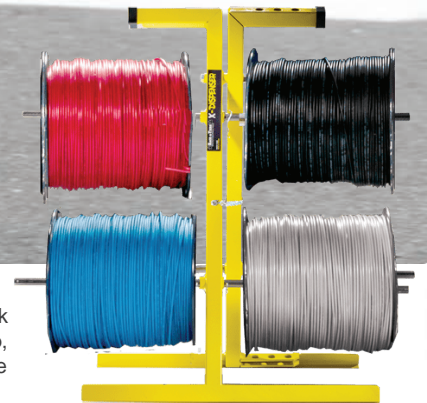
100 Lb Magnet
2" Magnetic Bridle Ring,
Small Standoff
Part# RMW200BR

*See Web Site For More Variations
(All sold in packs of 10)



THE X-DISPENSER

FOLDING WIRE CADDY



Part #11655

- Maximum spool quantity: 6. 500' reels of #10 AWG wire.
- Maximum spool diameter: 8".
- Max spool width: 9".
- Folds to 1" wide to easily fit in your van.
- Easy to carry: 1" by 23".

The X-Dispenser is a portable, fold-up wire dispensing device. Folds down to just 1" thick to easily fit in your work vehicle. Easy to set up, easy to put away. The X-Dispenser will become your go to wire dispenser when it comes to pulling smaller, single conductor spools.

ER-GO 50

SPOOL CARRIER



Ergonomic carrier, specially designed for the manual transportation of wire spools (electric wiring, steel cable, chain, etc.)

Maximum lifting capacity: 22.6 kg (50 lbs).
One year warranty against defects.

Made in Canada



Part# 56050

THE STICK

STUD MOUNTED WIRE DISPENSER

The Stick installs quickly & easily to any standard stud. Its compact design allows for easy storage once the job is complete.

- Weight capacity: 200 lbs.
- Maximum 15" reel width.



Part #11555

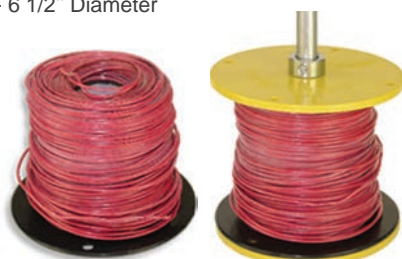
REEL-END

REUSABLE SPOOL REEL TOOL

Part# 17455

FEATURES:

- Pays for itself with the first roll saved and it's reusable
- Organize your wire spools with the reel-end wire spool repair kit
- The Reel-End repairs common plastic spools #10 through #18 gauge.
- 6 1/2" Diameter



Hooker

PIPE WRENCH ADAPTER

The Hooker Pipe Wrench Adaptor lets you turn your Rack-A-Tiers Wire Dispenser into a pipe vise.

- Light weight.
- Easy to use.
- Fast implementation.
- Inexpensive.
- To be used with an 18 rigid pipe wrench.



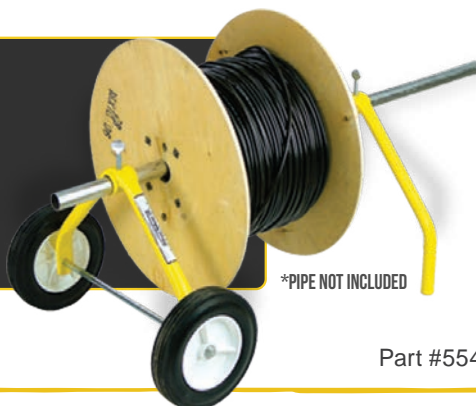
Part #10455

EZ ROLL

The E-Z Roll Wire Rack is the ultra compact and collapsible wheeled wire dispenser. When you're ready to pull wire, wheel the E-Z Roll into position and dispense wire directly from your pipe bender or 1" EMT.

FEATURES:

- 150 lbs load tested
- Rigid steel construction
- Light-weight design
- Compact (fits in any job box)
- Holds reels up to 24"
- Replacement wheels available



Part #55455

EZ Roll MULTI

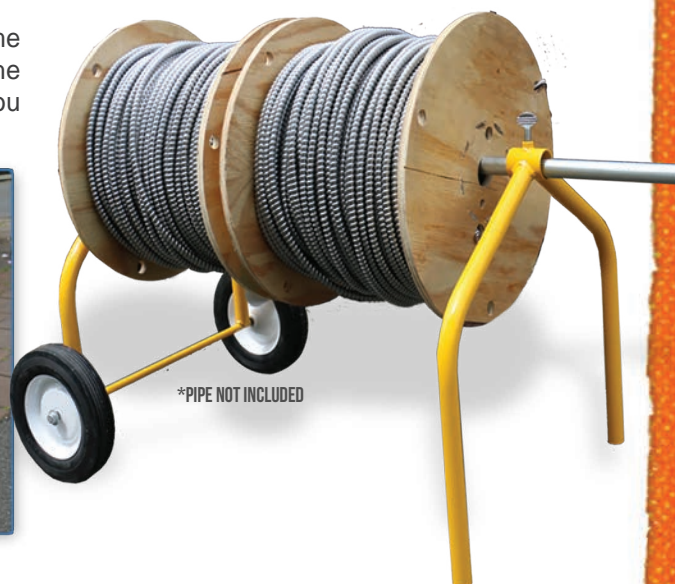
Get the most out of your EZ-roll wire rack with the new EZ-Roll Multi. This handy add-on extends the EZ-roll's use by allowing more wire spools to be added, giving it even more functionality & capacity.



Part# 55456

BIG EZ

The Big E-Z utilizes the same design and great features as the original EZ Roll while allowing you to dispense larger wire spools.



FEATURES:

- 300 lbs load tested
- Rigid steel construction
- Light-weight design
- Compact (fits in any job box)
- Holds up to 32"

Part# 55632

WIRE REEL

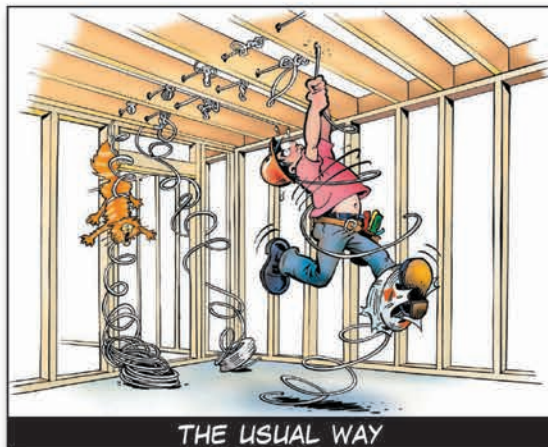


The all new Wire Reel is designed to last a lifetime. It is made of polypropylene which can withstand a normal work environment. The fastening hardware is all stainless steel and designed for easy setup and removal. The Wire Reel can be used with a standard 3/4" pvc conduit inserted in the center hole for easy roll out of your wire or cable.



Part# 18475

THOMAS WHEELER



THE USUAL WAY

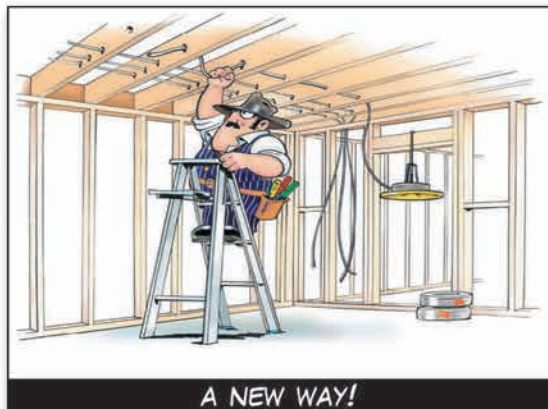
This easy-to-hang wire dispenser allows for fast, twist-free NMSC, MC cable or Flex pulling.

FEATURES:

- No maintenance required
- Affordable
- Dependable
- Saves time
- Eliminates waste
- Collapsible
- Holds up to 150 lbs

MFG NOTE

Most coil dispensers are too big, cumbersome and expensive. Not this one. The Thomas Wheeler knocks down and sets up in seconds, hangs on a 2x4, in trusses, above tee bars, or on a ladder. Light, simple, rugged, and it really works.



A NEW WAY!

Part# 19455



WIRE TUB

Part# 18455

The Wire Tub allows you to easily dispense and rewind wire. Don't waste a single foot of wire - rewind it in the Wire Tub and get ready for installation!

FEATURES:

- 360 degree feed adjusts automatically for easy dispensing
- 3-way adjustable center hub
- Removable top plate has a handle for rewinding wire!
- Large 24" diameter capacity



FOLDABLE STUD REELS

BENEFITS:

- 21" diameter shock absorbing wire tray
- Capacity: 100 lbs
- Grease retaining spindle gives trouble-free service eliminating maintenance over long periods
- Spindle spring adjusts to desirable free spool
- Designed for 14-2, 14-3, 12-2, 12-3 wire and MC wire
- Rotational wire guide allows pulling in any direction
- Raised edges on wire trays prevent wire spill
- Eliminates twisting and kinking of wire
- Constructed of high grade steel, zinc, and aluminum

19FSR24 - Foldable Stud Reel for 2"x4"

19FSR26 - Foldable Stud Reel for 2"x6"

19FSRC - Foldable Stud Reel for 2"x4" and 2"x6"



Combination STUD REEL & FLOOR REEL

BENEFITS:

- Optional 20" or 25.5" shock absorbing wire tray
- Capacity: 100 lbs
- Grease retaining spindle gives trouble-free service eliminating maintenance over long periods
- Spindle spring adjusts to desirable free spool
- Designed for 14-2, 14-3, 12-2, 12-3 wire and MC wire
- Rotational wire guide allows pulling in any direction
- Raised edges on wire trays prevent wire spill
- Eliminates twisting and kinking of wire
- Constructed of high grade steel, zinc, and aluminum
- Combo unit allows mounting on 2x4 and 2x6
- No open walls? No problem! Use it as a floor reel
- Its quick assembly and disassembly give you more time to focus on the job



19CFS20 - 20" Combination Stud Reel
19CFS25 - 25.5" Combination Stud Reel

Heavy Duty STUD REEL



BENEFITS:

- 24" diameter wire tray
- Capacity: 150 lbs
- Grease retaining spindle gives trouble-free service eliminating maintenance over long periods
- Spindle spring adjusts to desirable free spool
- Wire guide also serves as a carrying handle
- Designed for 14-2, 14-3, 12-2, 12-3, 10-2, 10-3 and MC wire
- Rotational wire guide allows pulling in any direction
- Raised edges on wire trays prevent wire spill
- Eliminates twisting and kinking of wire
- Constructed of high grade steel, zinc, and aluminum
- (Some assembly required)

19HDS24 - 2x4" Heavy Duty Stud Reel

Heavy Duty FLOOR REEL



BENEFITS:

- 24" diameter wire tray
- Capacity: 150 lbs
- Greased retaining spindle gives trouble-free service eliminating maintenance over long periods
- Spring adjusts to desirable free spool
- Wire guide also serves as a carrying handle
- Designed for 14-2, 14-3, 12-2, 12-3, 10-2, 10-3 and MC wire
- Rotational wire guide allows pulling in any direction
- Raised edges on wire trays prevent wire spill
- Eliminates twisting and kinking of wire
- Constructed of high grade steel, zinc, and aluminum

19HDFR - Heavy Duty Floor Reel

WIREFPOD



The Wire-Pod is a compact, portable dispenser designed specifically for coils. This handy device will work with NMSC, AC, and Flex coils. With its light-weight design it can easily be stored in any tool bag or work vehicle when not in use.

FEATURES:

- Opens for use and folds away for easy storage
- Weighs less than 3 lbs
- Compatible with NMSC, AC and Flex
- Made in USA



Part# 19955

CADDY MAC 2

Part# 11902



Caddy Mac #2 holds 16 spools of #10 awg or 24 spools of #12 awg. Hinge design allows easy access to all spools for wire dispensing and folds for compact storage. Spindles swing out to set position for convenient loading of wire spools.

Inner spindles store in special loops which can hold four pieces and will not fall out during transportation.



Number of Spools	Max Spool Dia	Load Capacity	Weight	Width	Additional Features
16-#10 awg. or 24-#12 awg.	7.5 in 19 cm	400 lbs 180 Kg.	72 lb. 33 kg.	26 in 66 cm	Folds up for compact storage.

SPOOL MAC

Part# 11900

*Ships via freight

FEATURES:

- All steel frame construction
- 10" wheels
- Easy set-up for cable dispensing
- No loose pieces
- Compact storage
- Fits through 32" (81 cm) doorways
- 350 lb (160 kg) load capacity
- Priced right – built to last



Max Reel Width	Max Spool Dia	Reel Capacity	Weight	Width	Additional Features
25 in 63.5 cm	40 in 101 cm	350 lbs 160 kg	76 lb. 35 kg.	31.5 in 80 cm	All steel frame, easy set-up for cable dispensing. Compact storage. Ship weight: 150 lbs



CADDY MAC 1

Part#11901

- Caddy Mac #1 transports spools on spindles and works as a dolly! Wire is dispensed while laying flat.
- 1/2" solid spindles are attached to cart, no loose pieces. Spindles lock in place, even during transportation.
- Spindles swing out to set position for convenient loading of wire spools.

Number of Spools	Max Spool Dia	Load Capacity	Weight	Width	Additional Features
8-#10 awg. or 12-#12 awg.	7.5 in 19 cm	200 lbs 90 kg	72 lb. 33 kg.	26 in 66 cm	Transports spools on spindles and works as a dolly. Wire is dispensed while laying flat.

CADDY TRUCK & CABLE CADDY

- Constructed of rugged 1" steel tubing.
- Both are 43" tall with 7" rubber wheels.
- Both can accommodate spools up to 16" wide on solid steel 1/2" axles.
- Cable Caddy features 6 axle positions for unlimited versatility.
- Cable Truck has 4 axle positions and a solid steel plate for transporting material.



Cable Caddy #CC1200

Cable Truck #CT1100



CLYDE'S CART



Clyde's Cart is a large capacity wire dispenser rack on casters. It allows you to store your wire and dispense it when you need. Specifically designed top bracket to accommodate a piece of plywood to convert it into a work table.

- 8 small spindles (5/8" OD) hold 32 rolls of 14/12 AWG wire.
- The small spindles are supported with a socket and hook mechanism for easy loading.
- 2 large spindles (OD=1.25") for large spools of wire.
- Large spindle supports can be fitted with optional safety pins to keep the spools from jumping in case of a kink in the wire.
- Frame above the wire spindles has ladder tabs on both sides so one could transport two step ladders.
- Upper frame will support a plywood shelf. Plywood and Tek screws supplied by the customer.
- 3600 lbs. maximum load capacity.
- Product weight: 160 lbs.
- Two of the 4 casters have brakes.
- Part# 17455 Reel End fits on the small spindles so you can unspool wire on broken reels

Part# 25900



Smart Load 500

The Smart Load 500 is an easy to use, portable wire dispensing cart. This versatile cart offers dispensing options for a variety of spool sizes. The dispensing bars even fold up for easy storage. This patented design will surely save you time and effort on the job site, in the warehouse or wherever you need it!

- Spool Capacity: 24 - #12 or 14 500' THHN
- 15 - #10 500' THHN
- Max Weight Capacity: 350 lbs.

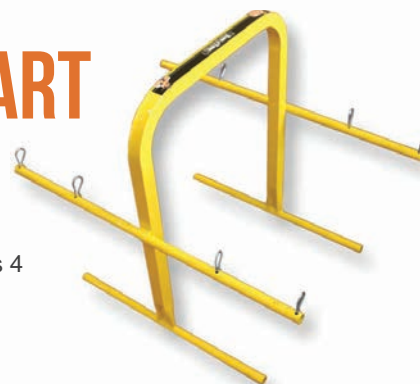
Part# 11905

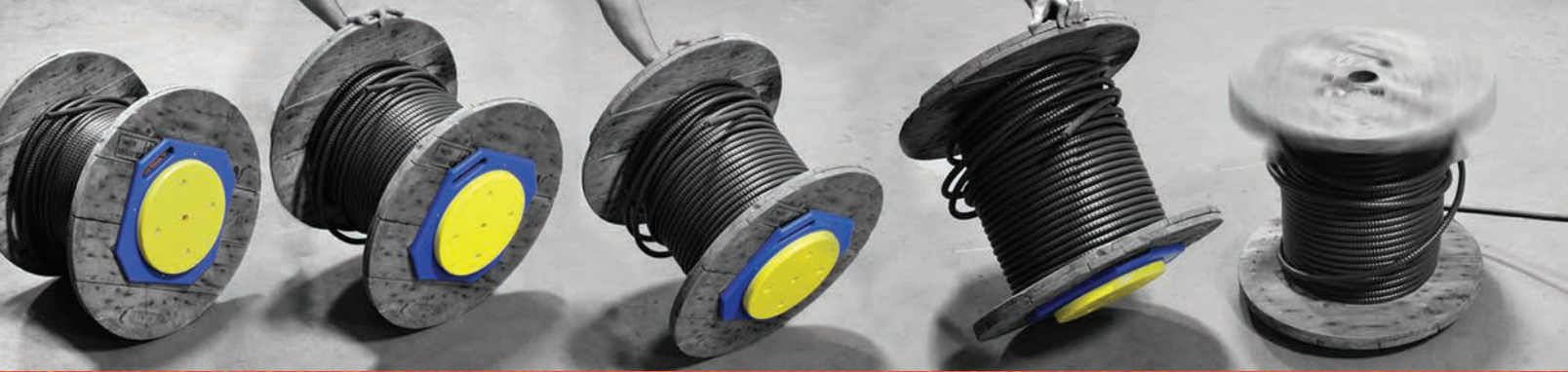


WIRE SPOOL HAND CART

Part# 11700

- Finish: Yellow powder coated
- Dispenses (8) 5" Wide Reels or (4) 6 to 10" Wide Reels, up to 7" Dia.
- 80 LB capacity
- Height 20"
- Width 15"
- Length 26"
- Number of Spindles 4
- Material: Steel
- 5.2 lbs. / 2.35 kg.





TUG WISE

THREE EASY STEPS!
1. SCREW TO BASE OF REEL
2. FLIP OVER REEL
3. PULL WIRE!

Part# 11931



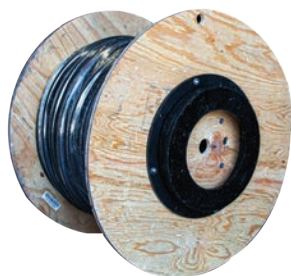
Attach the Tug Wise to the base of your reel and you're ready to pull cable in minutes! It's a lazy Susan for your reels.

- 4 Screw Holes for Easy Attachment.
- Middle threaded hole accommodates a 1/2" rigid thread.
- Works with wooden and plastic reels.
- Construction material: No-break polypropylene.
- Can handle up to 1000 lbs.



FEATURES:

- Screw holes for easy attachment
- Works with wooden or plastic reels
- Made of heavy-duty steel and built to last



TUG WISE EXTREME

Part# 11942

Max Load Rating: 6,000 lbs.

TUG WISE SUPERIOR

Part# 11940

Max Load Rating: 4,000 lbs.



4REEL BRACKETS

- Made for a maximum of 4 – 1000' NMD reels or weight equivalent.
- Clip together for compact, easy storage.
- Made from galvanized steel.
- To be used on 2x4 wood studs only. Not meant for steel studs.
- Do not install higher than 20".
- 1" IMC or Rigid is recommended with heavier loads.
- Mounting pins provided.
- 700 lbs

The 4Reel Brackets clamp on to a standard 2x4 wood stud and are capable of holding multiple 1,000' NMD reels. Reduce your installation time with these tough, high quality dispensing brackets.



Part# 11560

The Original ELECTRICAL REFERENCE BOOKS EVERYONE NEEDS AN UGLY'S ON THE JOB REFERENCE

- Mathematical formulas
- National electrical code
- Wiring configurations
- Conduit bending
- Voltage drops
- Life saving first aid procedures
- Much, much more

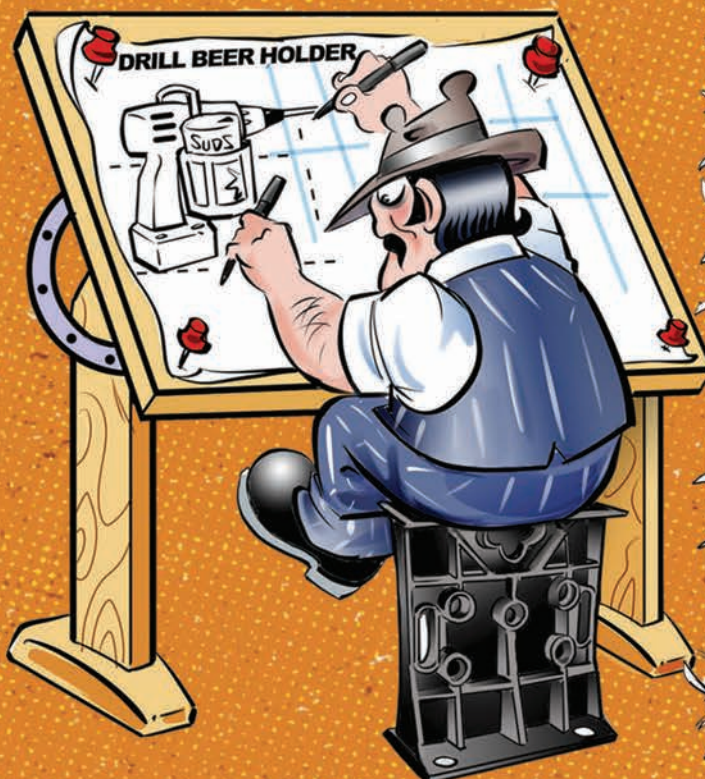
Part#
73214-21 - Safety & NFPA 70E
73215-23 - 2023 Electrical References
73216-20 - Motors & Controls
73217-20 - Referencias Electricas
2020 Edicion (Spanish)
73218-20 - Conduit bending



INVENTOR'S CORNER

FIND YOURSELF FLIPPING THROUGH THE RACK-A-TIERS CATALOG WISHING YOU HAD THOUGHT OF THAT TOOL, OR FRUSTRATED THAT YOU THOUGHT OF THAT IDEA FIRST?

WHAT WERE
THEY THINKING



Well, here's your chance to put your ideas into action. Rack-A-Tiers launched Inventor's Corner for creative folks like you to pitch ideas and read testimonials from past inventors.

Even if Rack-A-Tiers is unable to add your idea to our product line, we have the experience and knowledge to provide advice for your next move as an inventor.

Check out the Inventor's Corner at [RACK-A-TIERS.COM/INVENTORS](https://www.rack-a-tiers.com/inventors) and who knows maybe in next year's catalog your product could have a full-page spread.

[RACK-A-TIERS.COM/INVENTORS](https://www.rack-a-tiers.com/inventors)

THE NEXT
BIG THING



RACK-A-TIERS CURRENTLY PAYS OUT ROYALTIES TO OVER 30 INVENTORS. ARE YOU NEXT?

ATTENTION ALL WHOLESALERS!

SPRUCE UP YOUR SHOWROOM WITH A GREAT LOOKING DISPLAY FROM **RACK-A-TIERS**



Custom cut to size or as-is at 48" x 96"
Part# WALLPAPER96OR



24" x 48" Wallpaper Panel
Part# WALLPAPER48OR



Metal Floor Display
Part# METAL-FLOOR-DISPLAY



Rack-A-Tiers
Impact Bits
24-Slot Display
Part# 70SKE24



Rack-A-Tiers
Color Coded Bits
12-Slot Display
Part# 70SKE12



H4EMK Display
(Buy 10 to Receive)

*Tools Not Included

FOLLOW US

@RACKATIERSTOOLS

@RACKATIERS

@RACKATIERS

@RACKATIERS

WHAT'S WITH
THE NEW LOOK?

DIDN'T YOU HEAR?
I'M A SOCIAL MEDIA
INFLUENCER NOW.

NEW TOOLS
 TOOL TALK

WEEKLY GIVEAWAYS
 CONTESTS & MORE



| SALES@RACK-A-TIERS.COM | TOLL FREE: 1.888.939.9991 |