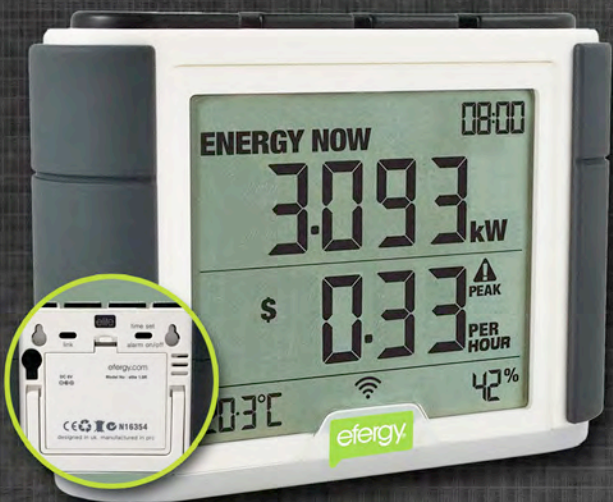


EFERGY ELITE Classic

Part# EF003

ENERGY MONITORS - HOW THEY WORK

The Efergy Elite Classic electricity monitor is simple to install and easy to use. Two small sensors are clipped on to the supply cables of your breaker panel. A lead from the sensors is plugged into the energy transmitter, which then wirelessly sends real time data to the energy monitor. The monitor converts the data and displays the demand in kilowatts of energy being consumed at any given time. The elite classic display may be programmed for various rates, ensuring that the cost of your energy is accurate.



Wireless Energy Monitor

Save up to 15% on your electricity bill through greater awareness!

The Efergy Elite Classic wirelessly sends energy consumption data to the display monitor. Simple and easy to install, the monitor updates every 10 seconds to track energy usage. The monitor allows for programming of 4 rate levels. You can see the cost of turning on or off of your electrical appliances and devices. Displays daily, weekly and monthly data. An alternative solution to monitor power consumption in a suite when there is no separate meter base.



Features:

- Efergy Elite Classic Kit Includes: 1x Wireless Display, 1x Transmitter, 2x 200A Split-core Current Sensor.
- Compact, portable display can be placed anywhere in the home
- Displays daily average
- View your real time energy consumption
- View historical data on energy usage (Cost, kWh and CO2)
- Audio alert if you exceed your set maximum consumption target



Breaker Panel



Sensor



Transmitter



Elite Classic

Accessories

200A Current Sensor

EF012 additional sensor for measuring current up to 200 amperes. Add one to the Elite Classic Kit for a 3 phase application. Perfect for whole house applications where a 200 ampere service is installed. Split core design easily fits around wire sizes up to #4/0 AWG without breaking connections.



Part# EF012

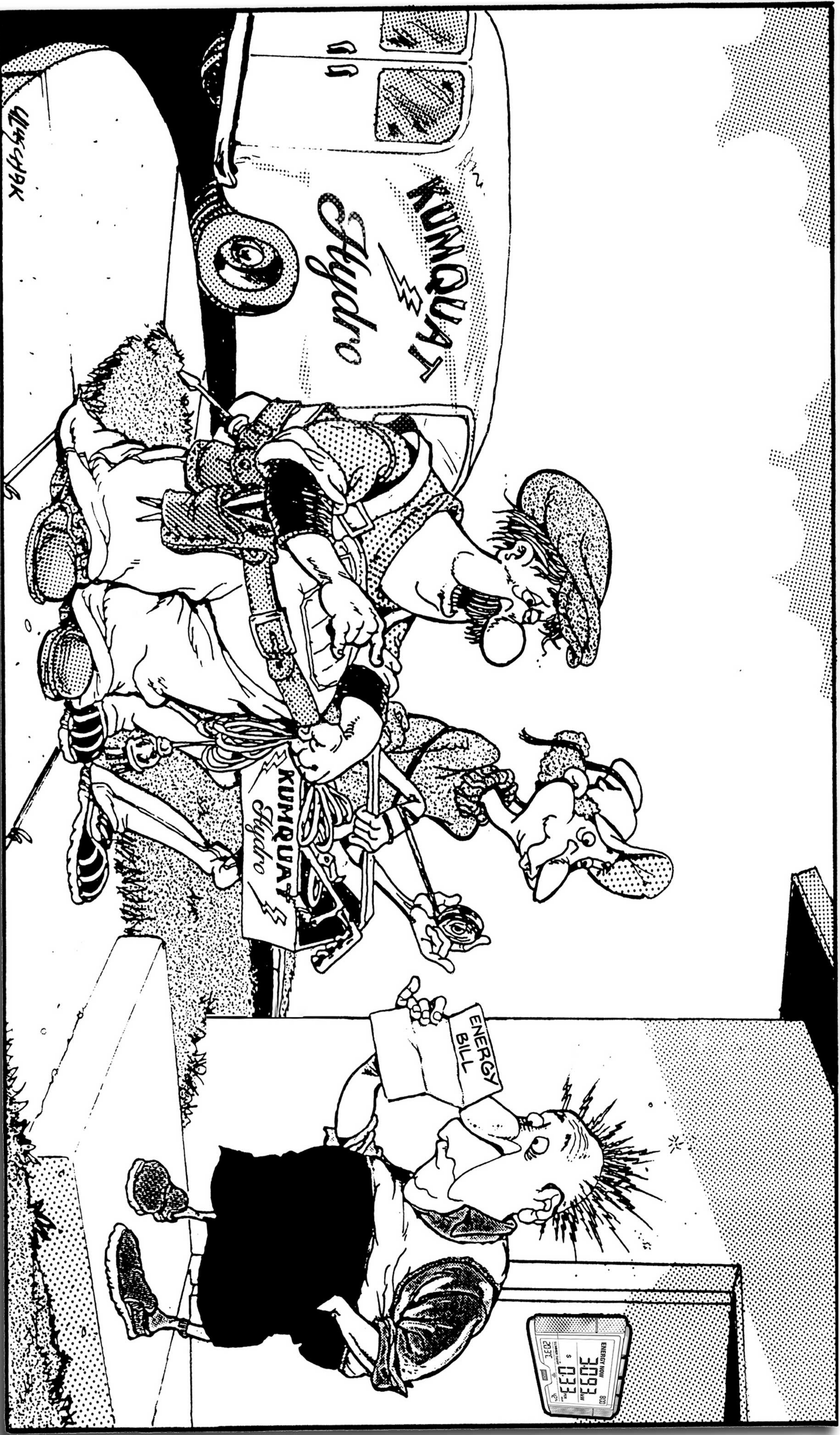
Hub Online Accessory Kit

Upgrade your wireless Efergy Monitor with the Efergy Hub and you will be able to view your home electricity consumption in real-time from anywhere and at any time using the free energy web platform provided. The Engage online platform gives you all the information you need to make positive changes to your consumption behaviour. By monitoring and understanding how much electricity your home is using you can save energy and money.



Part# EFH01

RACK-A-TIERS[®]



"THERE MUST BE SOME MISTAKE.

MY WIFE SAID HER GROW OP WAS GREEN!"