

# The CABLE CHASE

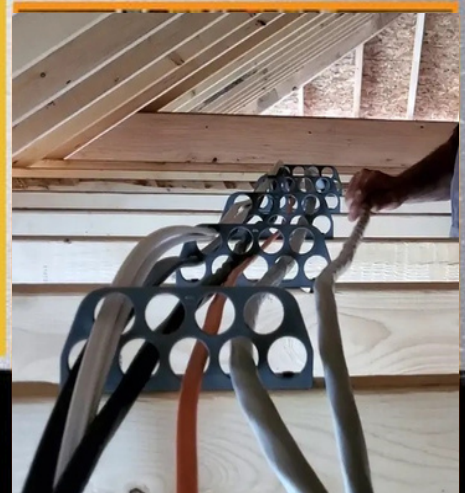
## WORK FASTER WITH LESS DAMAGE TO FLOOR JOISTS & WIRES

The Cable Chase is designed to provide a straight, clean path for wires with no obstructions. The brackets allow you to greatly reduce friction and stress on wires being pulled through the holes due to the hole design. Using the Cable Chase instead of drilling holes will greatly reduce the damage to floor joists, LVL's and manufactured wood. It will also provide less opportunity for the wire to become damaged due to crookedly drilled holes, sharp wooden edges or wooden splinters.

### Guidelines:

- Maximum distance between each CC under floor joists is 16" (when using under floor joists, the maximum distance, on one side from any wall, joist, pipe or ductwork is 12")
- Maximum distance between each CC along floor joists is 30"
- Maximum distance between each CC above ceiling joists is 24"
- Follows the same guidelines as typical wire fill calculation.
- Wire fill per hole: No more than (3) of 14-2, 14-3, 12-2, 12-3 romex. No more than (2) of 10-2, 10-3, 8-2, 6-2 romex. No more than (1) of 8-3, 6-3 romex and any SER up to #2. Unlimited low voltage, data, phone, cable

- ETL Listed #5016895
- Patent no. US D923,284 S
- Conforms to UL STD 2239
- Certified CSA STD 22.2 No. 18.4
- Nine holes available
- Patented design
- Accepted by IEA
- Follows the same guidelines as typical wire fill calculation
- Leaves room for future expansion



### Part#

CC9024  
 CC9024.P10 (10 Pack)  
 CC9024.BULK(Qty 100 pcs.)



FOLLOW US ON    

[WWW.RACK-A-TIERS.COM](http://WWW.RACK-A-TIERS.COM)

[SALES@RACK-A-TIERS.COM](mailto:SALES@RACK-A-TIERS.COM)

TOLL FREE: 1 (888) 939-9991