

# RACK-A-TIERS®

## SPECIALTY ELECTRICAL TOOLS



### SPECIFICATIONS

Product Name	Open Splice Junction Box	Open Splice Junction Box	Open Splice Junction Box
Brand	Rack-A-Tiers	Rack-A-Tiers	Rack-A-Tiers
Part Number	JB400	JB400.P5	JB400.P25
Product UPC	625912324008	625912324053	625912324251
Product Weight	0.23 lbs	1.15 lbs	6.40 lbs
Product Dimensions (L x W x H)	4.25" X 4.5" X 2.75"	4.25" X 4.5" X 2.75"	16" X 10" X 9"
Product Packaged Weight		3.97lbs	
Product Packaged Dimensions	4.25" X 4.5" X 2.75"	9" X 7.5" X 5.5"	19" X 18" X 17"
Product Material	Box: Fire-resistant polymer Screw: #8 X 5/8 Pan HD Phil SMS Z/P	Box: Fire-resistant polymer Screw: #8 X 5/8 Pan HD Phil SMS Z/P	Box: Fire-resistant polymer Screw: #8 X 5/8 Pan HD Phil SMS Z/P
Product Type		Junction Box	Junction Box
Color	Black	Black	Black
Country of Origin	US	US	US
Quantity	1	5	25

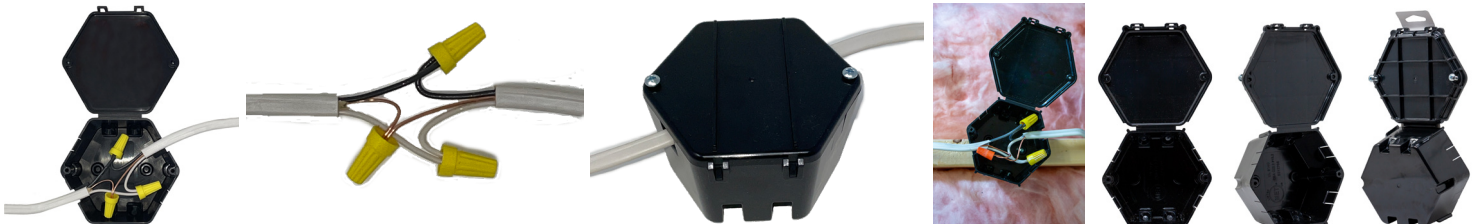
### Product Features

- MET Lab Tested to UL 514C Standard in USA & C22.2 # 182 standard in Canada
- 25.8 Cubic inches of volume.
- Slots for wiring on four sides of the junction box that fit NM cable sized 14-2 with ground to 10-3 with ground.
- Made in the USA.
- SAFE – Developed through rigorous laboratory testing, this j-box (junction box) is built with fire-resistant polymer designed to meet U.S. (U.L. 514C) and Canada (CSA C22.2 # 182) safety codes. Safely enclosing open wire splices is your legal responsibility and this wire cover is the most effortless method.
- SOLID – The patent-pending one-piece design means fewer parts and pieces to manage. With the hinged lid that folds down to seal the wire splice, you no longer have to re-wire open splices to get them in the junction box.
- SIMPLE – The revolutionary 3-step install process makes taking care of this common code violation easy for electricians and DIYers alike and turns junction box installation into a quick job.

### Product Instructions

1. Turn off electricity
2. Bend doors inward
3. Position wire splice in box
4. Attach box to structure
5. Close lid and tighten screws

Note: When using this box, the cable must be fastened to the structure within 8 inches of the box as measured along the sheath to comply with exception to 314.17 of the National Electrical Code.



FOLLOW US ON    

[WWW.RACK-A-TIERS.COM](http://WWW.RACK-A-TIERS.COM)

[SALES@RACK-A-TIERS.COM](mailto:SALES@RACK-A-TIERS.COM)

TOLL FREE: 1 (888) 939-9991