

RACK-A-TIERS®

SPECIALTY ELECTRICAL TOOLS



SPECIFICATIONS

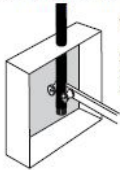
Product Name	The Bulldog Pup	The Bulldog Original Bender	The Bulldog Pro with Adaptor	The Bulldog 3 Piece Set (Original & Pro)	The Bulldog Big Daddy Set
Part Number	78400	78500	78501	78502	78600
Product UPC:	625912784000	625912785007	625912785014	625912785021	625912786004
Measurements:	14" Standard Handle	18" Standard Handle	18" Pro-Handle, w/15" Adapter Bar	18" Std. Handle & 18" Pro-Handle w/15" Adapter Bar	22" Std. Handle & 22" Pro-Handle w/15" Adapter Bar
Packaged Dimensions: L X W X H	20" x 4.5" x 4.3" 16.25 x 4.5 x 5	18" x 3" x 1" 20.5 x 4.5 x 5	18" x 15" x 3" 20.5 x 4.5 x 5	18" x 15" x 3" 20.5 x 4.5 x 5	24" x 4.5" x 4.5" 24.5 x 4.5 x 5
Product Packaged Weight:	1.8lbs	3.5lbs	5.9lbs	8.65lbs	11.8lbs
Product Material:	Steel	Steel	Steel	Steel	Steel
Dowels	Smooth Dowels only	Includes smooth and knurled dowels.	Includes smooth and knurled dowels.	Includes smooth and knurled dowels.	Includes smooth and knurled dowels.
Product Type:	Wire bending tool	Wire bending tool	Wire bending tool	Wire bending tool	Wire bending tool
Max cable Diameter	0.75" Bends up to 4/0	Bend up to 500 MCM	Bend up to 500 MCM	Bend up to 500 MCM	Bend up to 750 MCM.
Country of Origin:	US	US	US	US	US

Product Features

WIRE BENDING MADE EASY! The Bulldog Bender is designed and manufactured by an electrician for electricians. Used for bending wires in panels, disconnects, LB's and wire-ways. The Bulldog Bender will prove to be a valuable tool to add to your arsenal. As with any specialty tool, with practice you will learn how to use the Bender to its full bending potential.

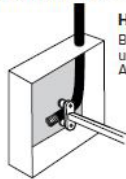
BULLDOG BENDER USE

Follow cable manufacturer installation guidelines. Do not exceed minimum cable bend radius.



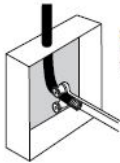
VERTICAL BEND

Step 1.
Start cable bend with straight end of Handle.



HORIZONTAL BEND

Bend cable left or right using Pro Handle and Adapter Bar assembly.



Step 2.
Use "T" end of Handle to finish cable bend.



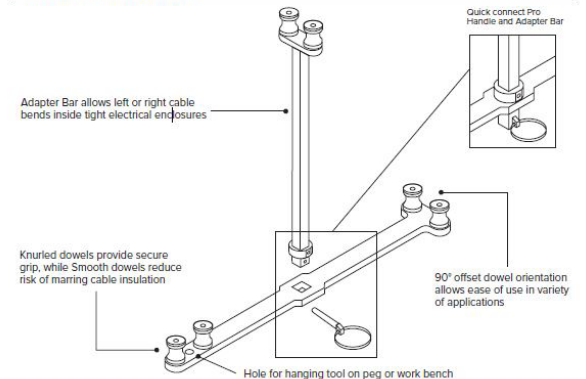
CABLE INSTALL LB Conduit Body

Two handle method: Use bottom handle to secure base of cable and top handle to lever cable through LB.

WARNING Electric shock hazard: Do not use on energized circuits. Contact with live circuits could result in severe injury or death.



BULLDOG BENDER GUIDE



FOLLOW US ON



WWW.RACK-A-TIERS.COM

SALES@RACK-A-TIERS.COM

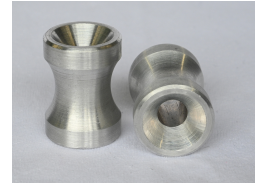
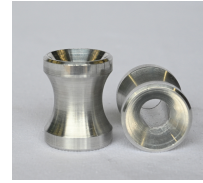
TOLL FREE: 1 (888) 939-9991

RACK-A-TIERS®

SPECIALTY ELECTRICAL TOOLS



SPECIFICATIONS



Product Name	Bulldog Knurled Dowels for (500 MCM) Bulldog Knurled Dowel for (500 MCM)	Bulldog Knurled Dowels for (750 MCM) Bulldog Knurled Dowel for (750 MCM)	Bulldog Smooth Dowels for (500 MCM) Bulldog Bender Smooth Hour Glass Dowel - Up to 500MCM	Bulldog Bender Smooth Hour Glass Dowel - Up to 750MCM
Product Number:	78055	78065	78050	78060
Product UPC:	625912780552	625912780651	625912780507	625912780606
Product Packaged Weight:	2lbs	4lbs	2lbs	4lbs
Product Material:	Steel	Steel	Steel	Steel
Product Type:	Knurled dowels for the Original Bulldog Bender!	Replacement smooth dowel for Bulldog Big Daddy Bender part number 78600. These dowels are intended for the larger Bulldog Big Daddy. They can not be used on the "Pup" models or the 500 MCM models.	Smooth replacement dowel for the 500 MCM Bulldog Benders. Can be used with the following part numbers: 78500, 78501, 78502.	Replacement smooth dowel for Bulldog Big Daddy Bender part number 78600. These dowels are intended for the larger Bulldog Big Daddy. They can not be used on the "Pup" models or the 500 MCM models.
Max cable Diameter	(500 MCM) Please note, sold individually NOT in pairs.	(750 MCM) Please note, sold individually NOT in pairs.	Up to 500MCM Please note, sold individually NOT in pairs.	Up to 750MCM Please note, sold individually NOT in pairs.
Country of Origin:	US	US	US	US



FOLLOW US ON



WWW.RACK-A-TIERS.COM

SALES@RACK-A-TIERS.COM

TOLL FREE: 1 (888) 939-9991